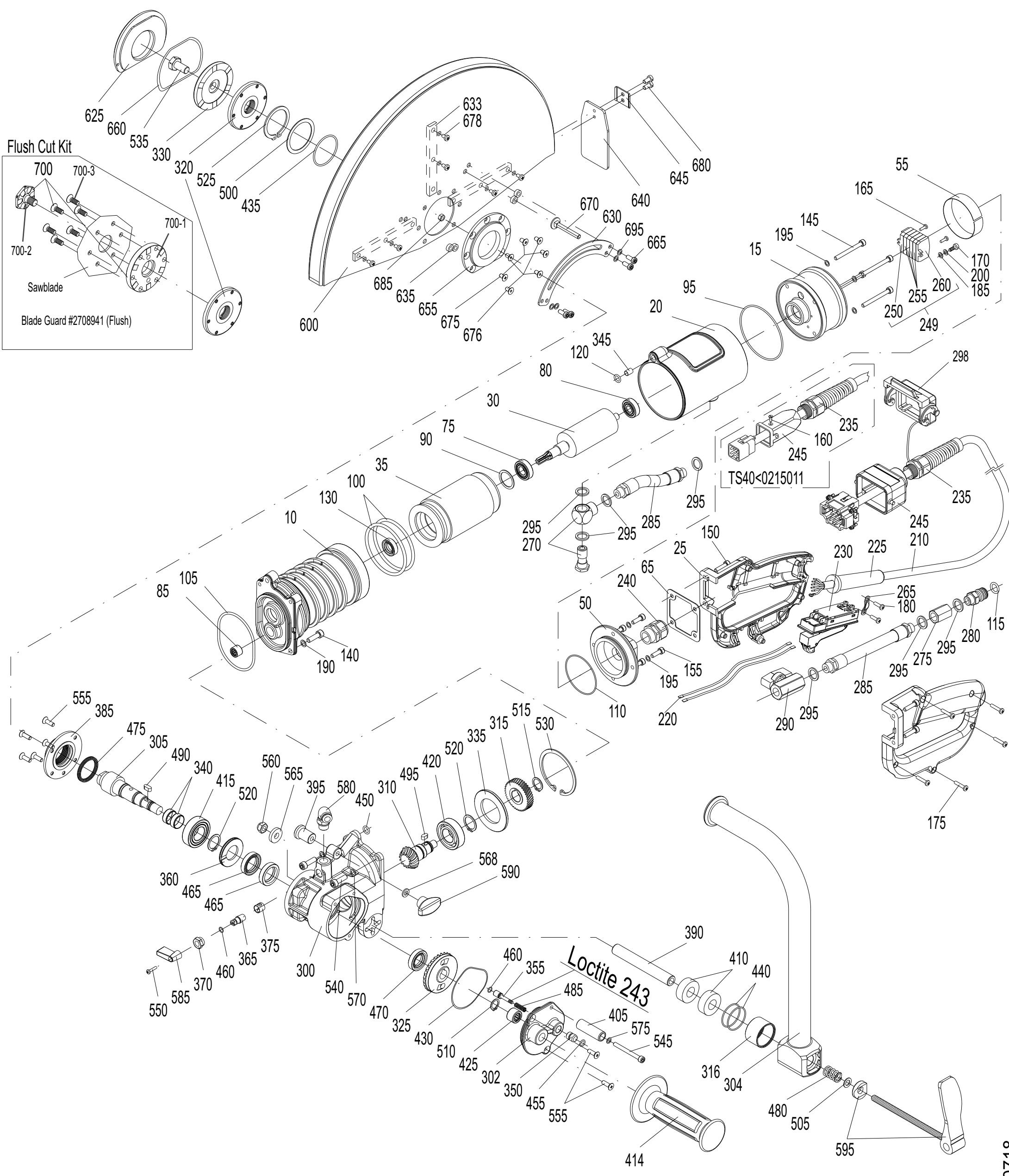




WEKA
HIGH CYCLE
HAND SAW
PARTS LIST

MODEL
TS40

AUG 2020



	DP #	DESCRIPTION
10	2708812	Motorcase
15	2708731	Motor Top Case
20	2708732	Case Sleeve
25	2707551	Switch Handle Comp
30	2708903	Rotor w/ Bearings
35	2708734	Stator Comp
50	2708736	Motor Top Case Hood w/65, 110
55	2708737	Insulation Film
65	2701567	Terminal Case Packing
75	2700664	Ball Bearing
80	2708738	Ball Bearing
85	2700709	Needle Bush
90	2700666	Compensation Washer
95	2700710	O-Ring
100	2708740	O-Ring
105	2702498	O-Ring
110	2708904	O-Ring
115	2700712	O-Ring
120	2708809	O-Ring
130	2703241	Rotary Shaft Seal
140	2701049	Hex. Socket Head Screw
145	2700732	Hex. Socket Head Screw
150	2707564	Hex. Socket Head Screw
155	2708811	Hex. Socket Head Screw
160	2708684	Count. Raised Head Screw
165	2708744	Cheese head screw
170	2700674	Sl. Pan Head Screw
175	2700676	Pan Head Tapping Screw
180	2702986	Pan Head Tapping Screw
185	2700680	Curved Spring Washer
190	2700826	Locking Washer
195	2700735	Locking Washer
200	2700681	Medium Washer
210	2708906	Cord Comp w/225,235,240,245,298
220	2708746	Motor Strand
225	2707556	Cord Sleeve
230	2707533	Motor Switch
235	2708747	Cord Gland
240	2708748	Cord Gland

	DP #	DESCRIPTION
245	2708749	Hood
249	2708908	Term. Block Comp w/250,255,260
250	2708750	End Term. Block w/Fixing Flange
255	2708751	Center Terminal Block
260	2708752	End Plate w/Fixing Flange
265	2700686	Cord Clamping Piece
270	2701094	Angle Screwing
275	2708909	Socket
280	2700706	Quick Connect Nipple
285	2701939	Hose Piece w/nipples
290	2707565	Ball Valve
295	2700717	Sealing Ring
298	2708754	Protective Hood
300	2908918	Gear Box
302	2708919	Bearing Hood w/350,355,430,455,460,485
304	2708825	Handle Comp
305	2708920	Spindle
310	2708921	Pinion Shaft
315	2708922	Spur Wheel
316	2708761	Sleeve
320	2708923	Spindle Flange
325	2708924	Spindle Wheel
330	2708724	Blade Flange
335	2708766	Pressure Disk
340	2708925	Shaft Wearing Sleeve
345	2708753	Fixing Sleeve
350	2704690	Locking Knob
355	2708926	Locking Pin
360	2708768	Supporting Disk
365	2708927	Valve Shaft
370	2708928	Cap Nut
375	2708929	Sealing Sleeve
385	2708930	Bearing Ring
390	2708769	Handle Axle
395	2708931	Distance Sleeve
405	2708845	Stop Sleeve
410	2708852	Adjust Sleeve
414	2700707	Handle
415	2708773	Ball Bearing

	DP #	DESCRIPTION
420	2708774	Ball Bearing
425	2708775	Needle Bush
430	2708776	O-Ring
435	2708932	O-Ring
440	2701866	O-Ring
450	2708809	O-Ring
455	2708933	O-Ring
460	2708934	O-Ring
465	2708935	Rotary Shaft Seal
470	2708778	Rotary Shaft Seal
475	2708797	Rotary Shaft Seal
480	2708779	Pressure Spring
485	2708937	Pressure Spring
490	2708780	Parallel Key
495	2700815	Parallel Key
500	2700830	Shim Ring
505	2708781	Shim Ring
510	2708782	Retaining Ring
515	2700820	Retaining Ring
520	2708810	Retaining Ring
525	2708591	Retaining Ring
530	2708783	Tapered Retaining Ring
535	2708603	Hexagon Head Screw
540	2701049	Hex. Socket Head Screw
545	2700732	Hex. Socket Head Screw
550	2702371	Cheese head screw
555	2708938	Count. Head Screw
560	2708667	Hex Nut w/prevailing torq insert
565	2708784	Medium Washer
568	2700736	Medium Washer
570	2700826	Locking Washer
575	2700735	Locking Washer
580	2702594	Angle Quick Connect Nipple
585	2708939	Toggle Grip
590	2708940	Wing Nut
595	2708785	Cam Lever Comp w/Pressure Disc
	2708786	Gear Oil
600	2708941	Blade Guard Comp w/630-695
630	2708946	Locking Gib

	DP #	DESCRIPTION
633	2708947	Reinforcing Rib
635	2708948	Distance Sleeve
640	2708950	Splash Guard
645	2708951	Clam ping Plate
655	2708952	Reinforcem ent Ring
665	2708884	Hex. Socket Head Screw
670	2708953	Mushroom Head Sq. Neck Bolt
675	2708954	Count. Head Screw
676	2708955	Th. Roll. Counter Sunk Screw
678	2706217	Th. Roll. Cheese Head Screw
680	2708801	Slotted Cheese Head Screw
685	2700858	Hexagon Nut
695	2700735	Locking W asher
700	6080027	Flush Cut Kit
700-1	2708957	Distance Disc
700-2	2708958	Nozzle Screw
700-3	2708959	Count. Head Screw
	2708960	Flatkey
	2708806	Male Insert w/o Male Contacts
	2708807	Male Contact
	270880	Coding Bridge

EQUIPMENT AND PARTS WARRANTY

Diamond Products warrants all equipment manufactured by it against defects in workmanship or materials for a period of 1 year from the date of shipment to Customer. The responsibility of Diamond Products under this Warranty is limited to replacement or repair of defective parts at Diamond Products' Elyria, Ohio factory, or at a point designated by it, of such parts as shall appear to us upon inspection at such parts, to have been defective in material or workmanship, with expense for transportation and labor borne by Customer. In no event shall Diamond Products be liable for consequential or incidental damages arising out of the failure of any Product to operate properly.

THIS WARRANTY IS IN LIEU OF ALL OTHER WARRANTIES, EXPRESSED OR IMPLIED, AND ALL SUCH OTHER WARRANTIES ARE HEREBY DISCLAIMED.



333 Prospect Street, Elyria, Ohio 44035
(440) 323-4616 • (800) 321-5336 • Fax (800) 634-4035
www.diamondproducts.com