



Click Here To View
Item at

www.GapPower.com

*Sales • Rentals
Parts & Service*

***Section 4
PARTS***

SECTION 4 PARTS

Factory Service Information

This section contains the illustrated drawings and parts list for help in identifying and/or ordering replacement parts for your machine. Follow the instructions in the front section of this manual “Ordering Parts” when ordering replacement parts to insure prompt and accurate delivery.

NOTE

All set screws have blue (LOC-TITE™) applied at the factory. If set screw is removed or loosened for any reason re-apply blue (LOC-TITE™).

NOTE

All grease fittings are capped with CAP PLUG GC-5 (AEC PN 015692) to protect the fitting. If cap becomes missing or damaged replace it as soon as possible.

NOTE

Anti-Seize is applied at the factory to all drive line coupling, gear box main and counter shafts and pitch control threaded rod assemblies. If these parts are disassembled re-apply a light coat of a graphite based anti-seize.

We recommend AEC quality replacement parts, available from the AEC Customer Service Department or your nearest AEC Dealer.

Part numbers are subject to change without notice. Part numbers might be different outside of the United States of America. Use part numbers listed in the applicable parts list table when you place your order. If a part number changes, the AEC Customer Service Department or your nearest AEC dealer will have the latest part number for the replacement part.

Remember when you order replacement parts, you will need your model number and serial number. These are the numbers that you have recorded in the UNIT ID section of this manual. Please order replacement parts by the appropriate part number, not the key number.

This manual contains an illustrated parts list for help in ordering replacement parts for your machine. Follow the instructions below when ordering parts to insure prompt and accurate delivery:

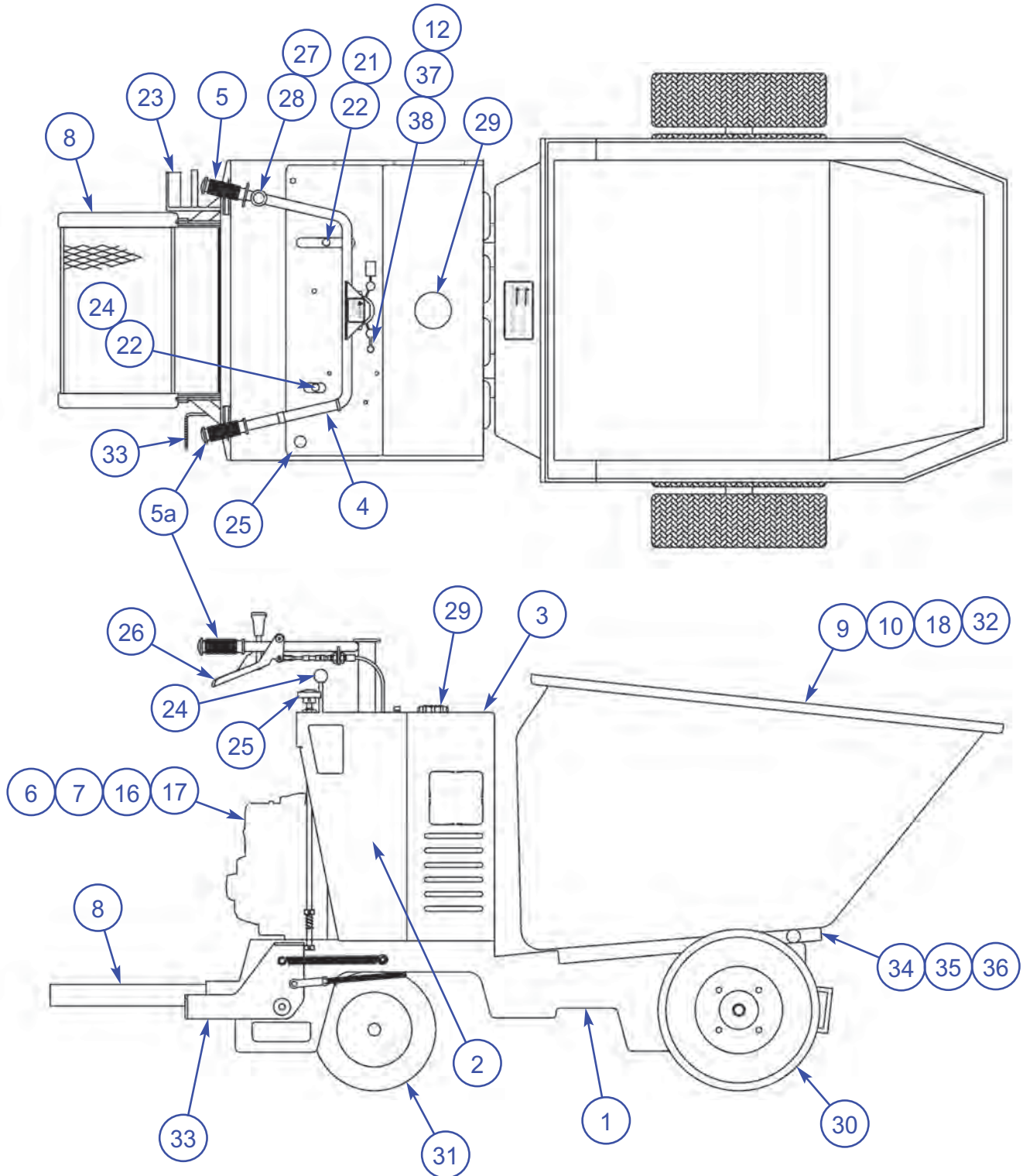
1. All orders for service parts - include the serial number for the machine. Shipment will be delayed if this information is not available.
2. Include correct description and part number from the "PARTS" Section 4.
3. Specify exact shipping instructions, including the preferred routing and complete destination address.
4. **DO NOT** return parts to AEC without receiving written authorization from AEC. All authorized returns must be shipped pre-paid.
5. When placing an order, please contact the AEC Dealer nearest you.

NOTE

All information, specifications, and illustrations in this manual are subject to change without notice and are based on the latest information at the time of publication.

SECTION 4
PARTS

4.1 Illustration
General Arrangement



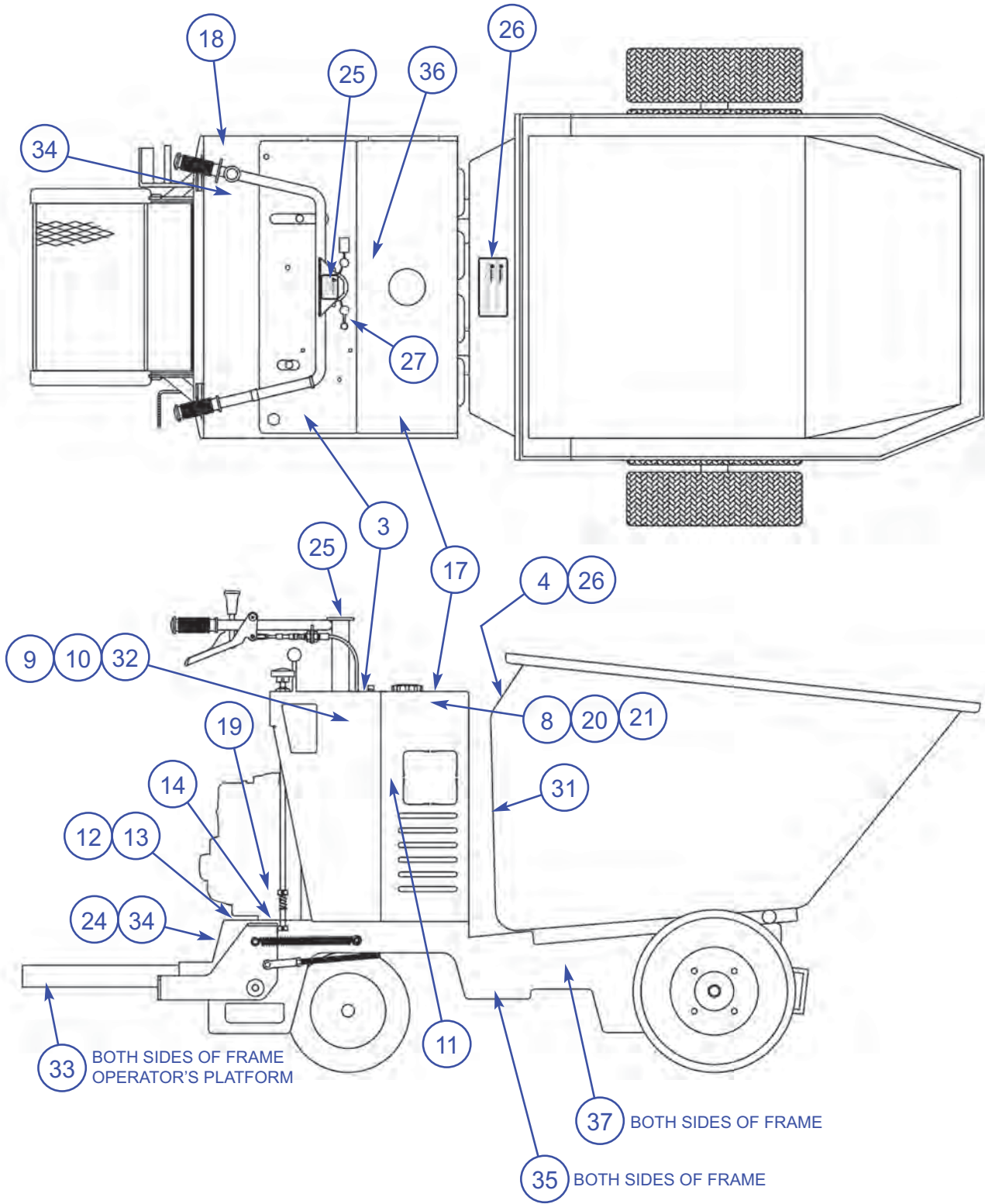
4.1 Parts List General Arrangement

SECTION 4 PARTS

ITEM	PART#	DESCRIPTION	QTY
1	42100-36	Main Frame	1
2	42100-38	Console	1
3	42108-01	Hydraulic Reservoir Cover	1
4	42126-01	Standard Handle Bar Less Grips	1
5	42102-07	LH Handle Bar Grip	1
5a	42102-08	RH Handle Bar Grip with Trimmed Flange	1
6	EN0600	13HP Honda Recoil Start Engine	1
7	EN1700	13HP Honda Electric Start Engine	1
8	42115-01	Operator's Platform	1
9	42106-03	16 Cubic Foot Poly Bucket- AR16	1
10	42105-01	16 Cubic Foot Steel Bucket - AR16	1
12	EM0100	Stop Switch (for machines prior to Serial #G-16596}	1
16	42124-01	18 HP Honda Electric Start Engine- AR21 - Discontinued	1
17	45320-09	20 HP Honda Electric Start Engine for AR21	1
18	42122-01	21 Cubic Foot Poly Bucket- AR21	1
21	42117-02	Dump Lever	1
22	MS2100	Ball Knob	1
23	42117-17	Foot Operated Dump Pedal	1
24	42103-65	Handle for Directional Control Valve	1
25	42101-71	Parking Brake Knob	1
26	42107-25	Speed Control Lever	1
27	42126-18	Handlebar Mounted Bucket Dump Handle	1
28	42126-21	Knob for Handlebar Mounted Dump	1
29	FI0350	Hydraulic Oil Reservoir Breather/Dipstick	1
30	42113-20	Foam Filled Drive Tire with Wheel	4
31	42113-21	Foam Filled Steering Tire with Wheel	2
32	42121-08	21 Cubic Foot Steel Bucket- AR21	1
33	42101-44	Brake Pedal	1
34	42110-02	Bucket Base Plate	1
35	42110-11	Pivot Pin for Bucket Base Plate	1
36	42110-16	Clamp Collar for Bucket Base Plate	1
37	45049-25	Emergency Stop Switch for Recoil Start (for machines built after to Serial #G-16595)	1
38	45043-04	Emergency Stop Switch for Electric Start (for machines built after to Serial #G-16595)	1

SECTION 4
PARTS

4.2 Illustration
Decals



4.2 Parts List Decals

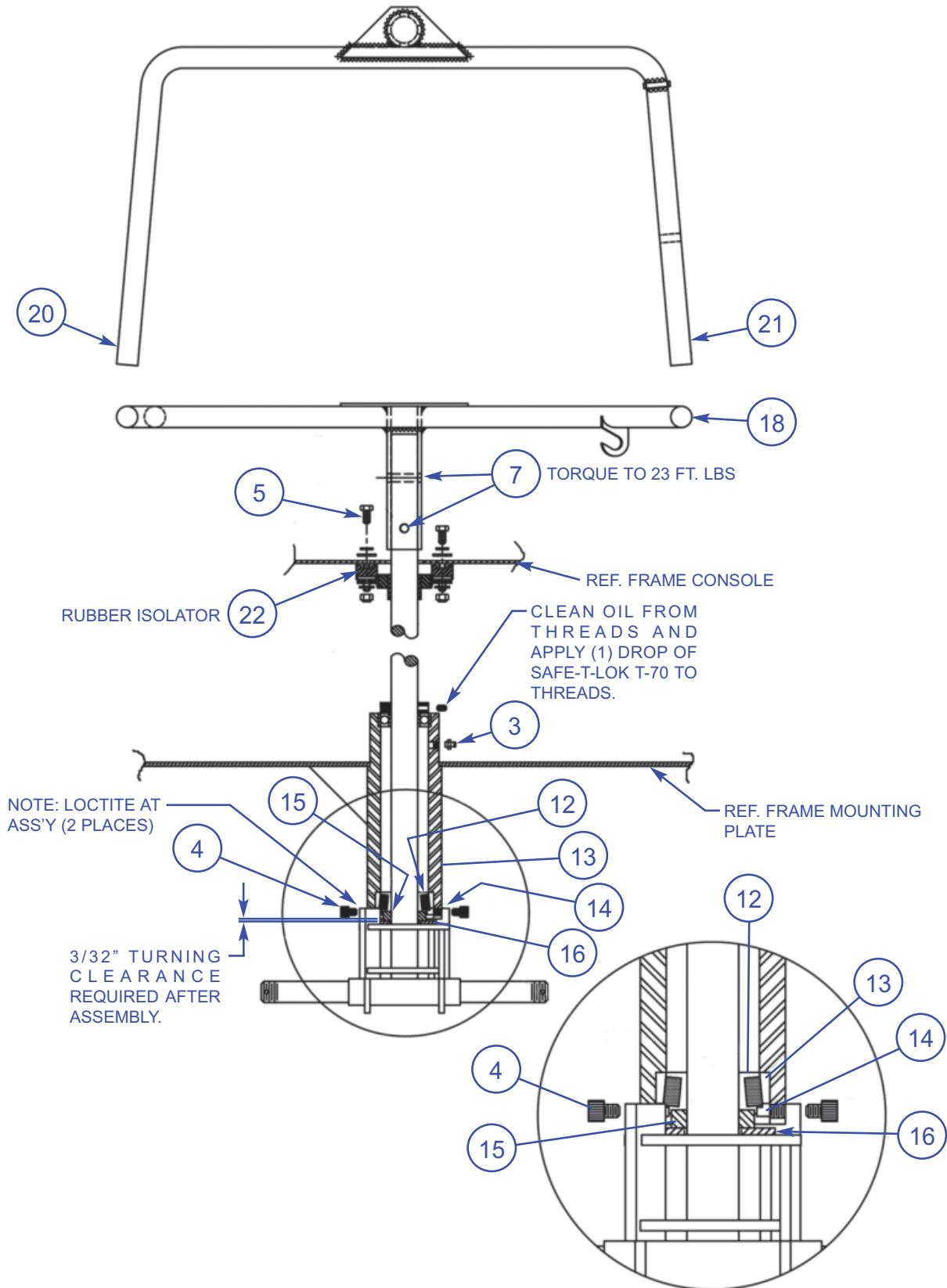
SECTION 4 PARTS

ITEM	PART#	DESCRIPTION	QTY
1	42109-32R	Complete Decal Set for "AR16"	1
2	42109-33R	Complete Decal Set for "AR21"	1
3	42109-01R	Dash Decal. Located on Top of Console	1
4	DE1800	Lifting!Tie Down Safety Decal (located on Rear face of Bucket)	1
5*	42109	Complete Decal Set for AR16 and AR21.	1
8	056340	DECAL ALLEN OVAL 4" X 6.67" WHITE	2
9*	056501	"AR16" Decal.	2
10*	056502	"AR21" Decal.	2
11	42109-11	Flammable Fuel Safety Decal for AR21 and AR21	1
12	42109-12	Mine-X Purifier/Muffler Safety Decal.	1
13	42109-13	ASME Safety Decal	1
14	42109-14	Fan Caution	1
17	42109-17R	Safety Decal.	1
18	42109-18	Lifting! Tie Down Safety Decal	1
19	42109-19	Manual Location in Holding Tube Decal	1
20	DE2400	B-16 "Concrete Bomber" Decal with Star and Stripes	2
21	DE2500	B-21 "Concrete Bomber" Decal with Star and Stripes	2
24	42109-24	Lifting!Tie Down Safety Decal.	1
25	42109-25	Operator Position Decal	1
26	42109-26	"DANGER" Travel Down Hill Instructions..... Decal	1
27	48200-05	"EMERGENCY STOP" Round Decal. Place over Dash Decal.	1
31	DE1100R	Safety & Operating Instructions Decal (for Bucket only)	1
32	DE2600	Check Stripe Decal X 20" Long.	2
33	DE2700	Check Stripe Decal X 12" Long.	2
34	DE1700	Decal, Emissions	1
35	DE2800	Check Stripe Decal X 10" Long.	2
36	DE1900	Hydraulic Oil Decal (for machines with top louvered Hydraulic Reservoir Cover only)	1
37	DE2000	Pinch Point Safety Decal	2

* For machines prior to March 2008

SECTION 4 PARTS

4.3 Illustration Steering Column



4.3 Parts List Steering Column

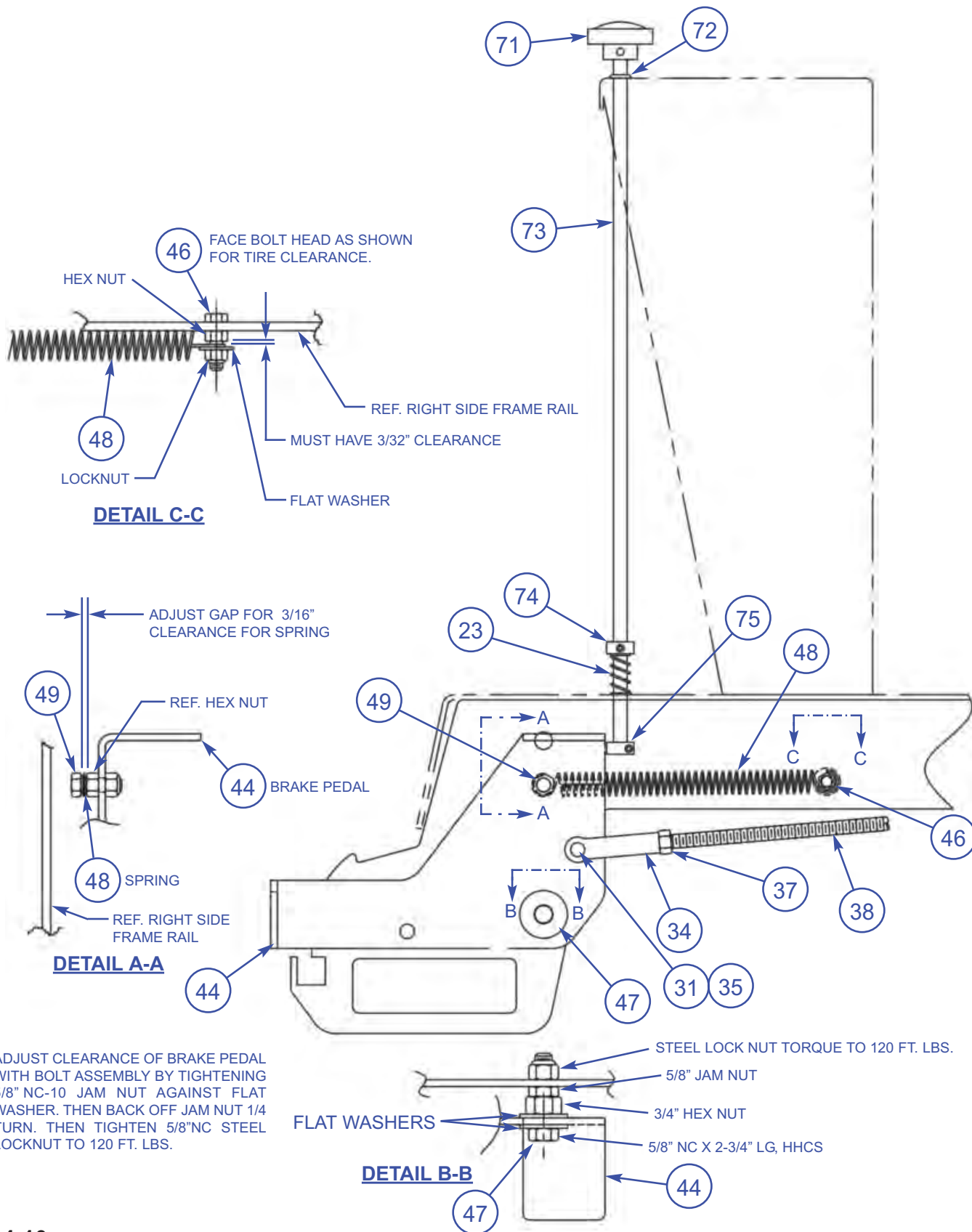
SECTION 4 PARTS

ITEM	PART#	DESCRIPTION	QTY
1	32100-01	Steering Column	1
2	32100-05	Spring Pin. Used on all machines built prior to November 2006	2
3	42100-18	Grease Fitting	1
4	42100-17	Stop Bolt. 5/16"NC Socket Head Cap Screw X 3/8"LG. Grade 8	2
5	32100-22	Hex Head Cap Screw. 5/16"NC X 5/8"LG. with Flat Washer and Lock Washer and Lock Nut	2
7	42102-06	Hex Head Cap Screw. 3/8"NC X 2-1/4"LG. with Lock Nut	2
8	32100-08	Flanged Bearing	1
10	C00100	Clamping Collar	1
11	BE1400	Ball Bearing	1
12	BE1200	Bearing Cone	1
13	BE1300	Bearing Cup	1
14	MS3700	Grease Seal	1
15	32100-15	Spacer	1
16	32100-16	Flat Washer	1
18	42126-01	Handlebar	1
20	42102-07	Handlebar Grip, Untrimmed.	1
21	42102-08	Handlebar Grip, Trimmed.	1
22	32100-21	Stud Mounted Rubber Isolator	2



SECTION 4 PARTS

4.4 Illustration Service and Parking Brake



ADJUST CLEARANCE OF BRAKE PEDAL WITH BOLT ASSEMBLY BY TIGHTENING 5/8" NC-10 JAM NUT AGAINST FLAT WASHER. THEN BACK OFF JAM NUT 1/4 TURN. THEN TIGHTEN 5/8" NC STEEL LOCKNUT TO 120 FT. LBS.

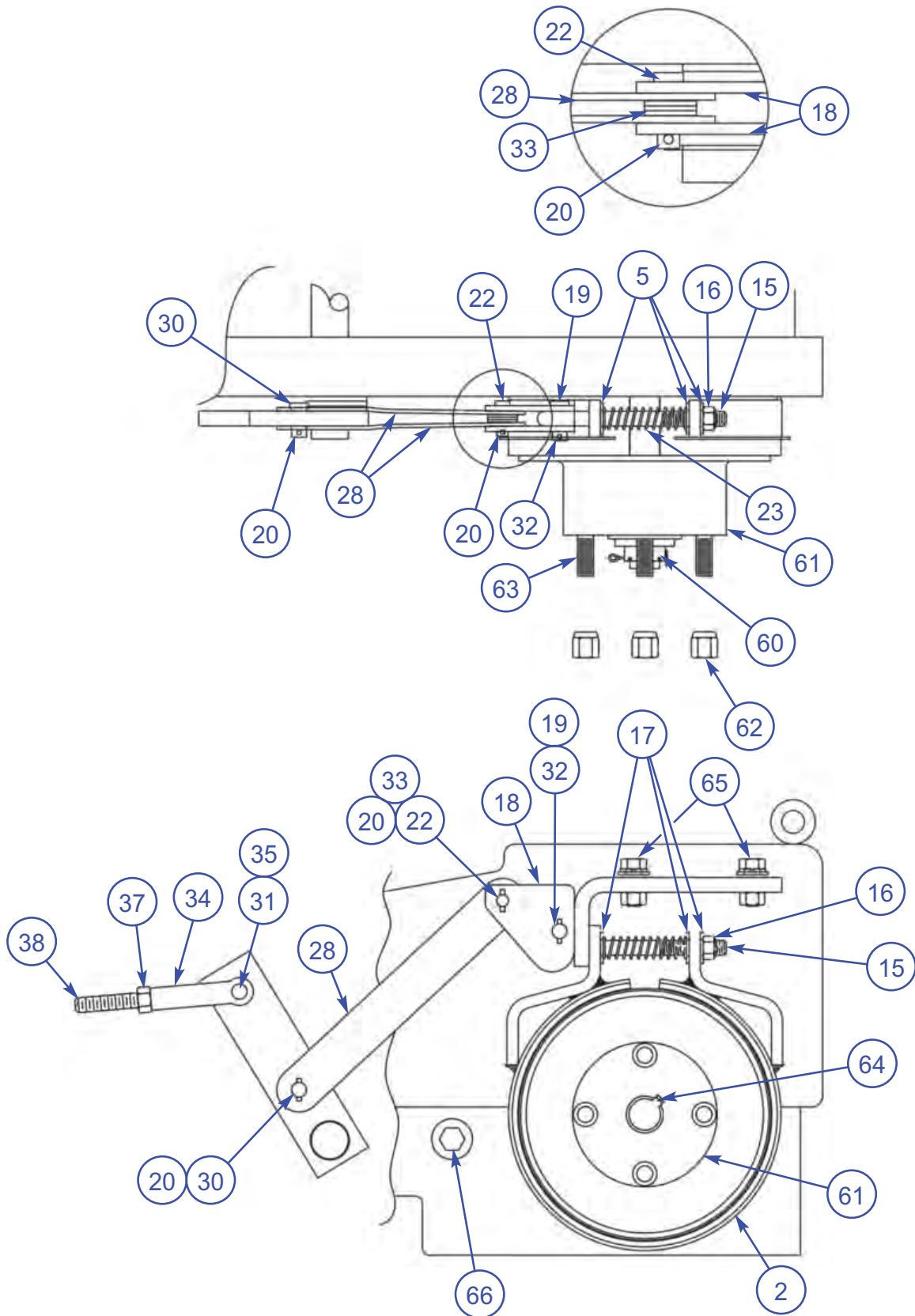
4.4 Parts List Service and Parking Brake

SECTION 4 PARTS

ITEM	PART#	DESCRIPTION	QTY
2	42101-02	Brake Band	2
15	42101-15	"J" Bolt	2
16	42101-16	1/2" NC-13 Nylock Locknut, Grade 2/IFI-100/107 No Substitutes	2
17	42101-17	1/2" SAE Plated Flatwasher	6
18	42101-18	Brake Cam (replace in matched pairs only)	4
19	42101-19	Case Hardened Clevis Pin x 1-5/16" Overall Length. No Substitutes	2
20	42101-20	5/32" Diameter X 3/4" Lg. Spring Pin. No Substitutes - Do not use cotter pin	4
22	42101-22	Clevis Pin x 1-1/8" Overall Length	2
23	SN0150	Compression Spring	3
28	42101-28	Brake Cam Link Arm	4
30	42101-30	Clevis Pin x .77" Overall Length	2
31	42101-31	1/8" x 3/4" Cotter Pin	2
32	42101-32	3.5mm x 20mm Lg. Spring Pin. No Substitutes. Do not use cotter pin.	2
33	42101-33	5/16" USS Flat Washer	6
34	MS3900	Adjustable Yoke End	2
35	MS3800	Yoke Pin	2
37	42101-37	1/2" NC Hex Nut	2
38	42101-38	Brake Rod. Plated. All Thread SAE Grade 2 minimum. No substitutes	1
44	42101-44	Brake Pedal	1
46	42101-46	Bolt Assembly. 3/8" NC-16 x 1-1/2" Lg. HHCS with USS Flat Washer, Lock Nut, and Hex Nut.	1
47	42101-47	Bolt Assembly. 5/8" NC-10 x 2-3/4" Lg. HHCS with 3/4" NC Hex Nut, 5/8" NC-10 Jam Nut, 5/8"NC-10 Steel Lock Nut, two(2) 5/8" SAE Flat Washers.	1
48	42101-48	Spring, Brake Pedal Return	1
49	42101-49	Bolt Assembly. 1/2" NC-13 x 1-1/2"Lg. HHCS with Lock Nut and Hex Nut.	1
60	42103-64	1"-20 Castle Nut for Hydraulic Wheel Motor	2
61	42101-61	Wheel Hub With Studs	2
62	42113-09	Cone Type Wheel Nut	16
63	42101-63	Wheel Studs Only for Wheel Hub, Item 61	8
64	42103-63	5/16" Square Key X 1" Lg. for Wheel Hub, Item 61	2
65	42101-64	Bolt Assembly. 1/2" NC-13 x 1-1/4." Lg. HHCS with SAE Flat Washer and Lock Washer.	4
66	42101-65	Bolt Assembly. 1/2" NC-13 x 1-1/4." HHCS with two (2) USS Flat Washers and Steel Lock Nut.	2
71	42101-71	Palm Grip	1
72	42101-72	Grommet	1
73	42101-73	Parking Brake Catch Rod	1
74	42101-74	Set Collar	1
75	42101-75	Clamping Collar	1

SECTION 4
PARTS

4.4 Illustration, cont'd
Service and Parking Brake



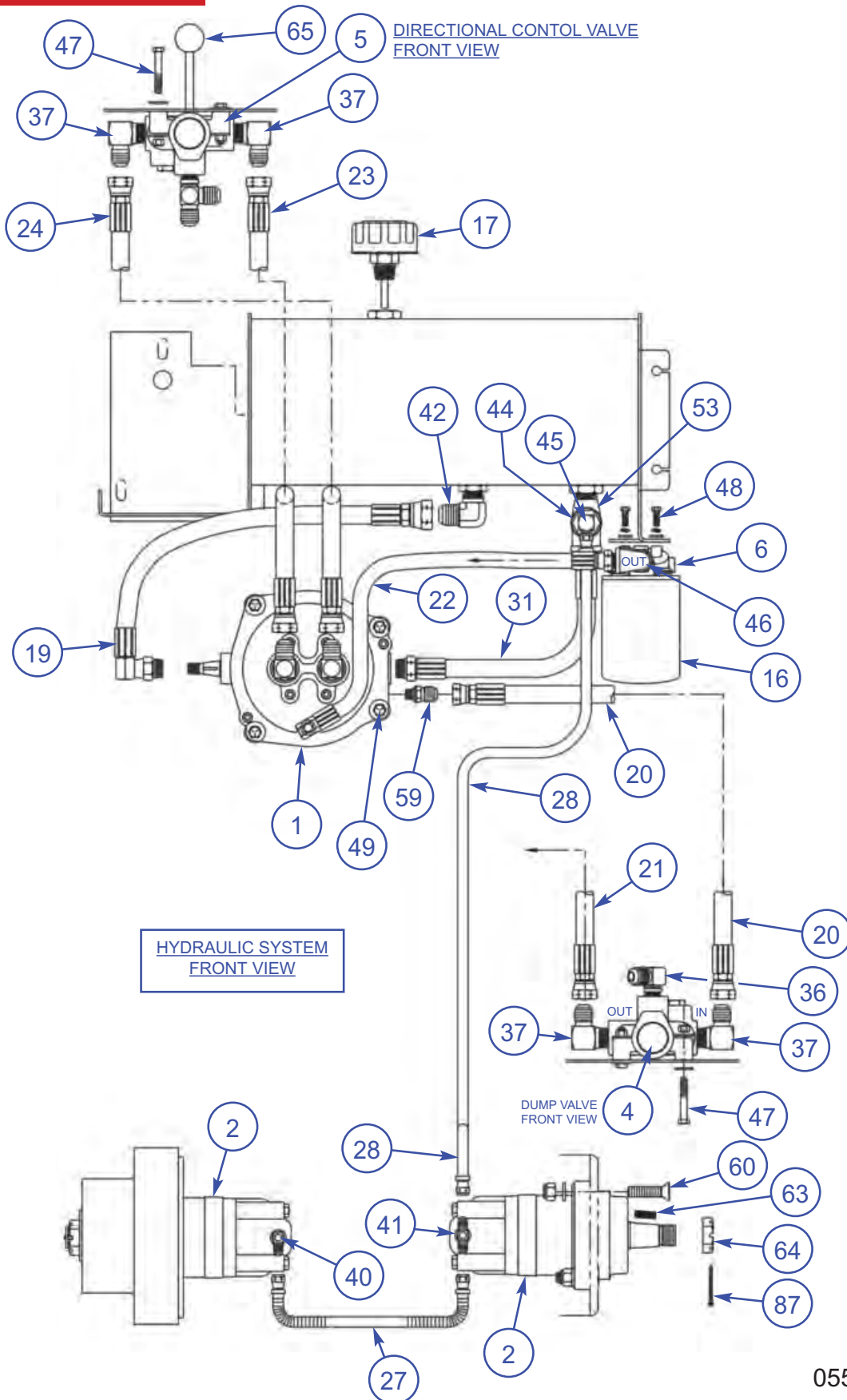
4.4 Parts List, cont'd Service and Parking Brake

SECTION 4 PARTS

ITEM	PART#	DESCRIPTION	QTY
2	42101-02	Brake Band	2
15	42101-15	"J" Bolt	2
16	42101-16	1/2" NC-13 Nylock Locknut, Grade 2/IFI-100/107 No Substitutes	2
17	42101-17	1/2" SAE Plated Flatwasher	6
18	42101-18	Brake Cam (replace in matched pairs only)	4
19	42101-19	Case Hardened Clevis Pin x 1-5/16" Overall Length. No Substitutes	2
20	42101-20	5/32" Diameter X 3/4" Lg. Spring Pin. No Substitutes - Do not use cotter pin	4
22	42101-22	Clevis Pin x 1-1/8" Overall Length	2
23	SN0150	Compression Spring	3
28	42101-28	Brake Cam Link Arm	4
30	42101-30	Clevis Pin x .77" Overall Length	2
31	42101-31	1/8" x 3/4" Cotter Pin	2
32	42101-32	3.5mm x 20mm Lg. Spring Pin. No Substitutes. Do not use cotter pin.	2
33	42101-33	5/16" USS Flat Washer	6
34	MS3900	Adjustable Yoke End	2
35	MS3800	Yoke Pin	2
37	42101-37	1/2" NC Hex Nut	2
38	42101-38	Brake Rod. Plated. All Thread SAE Grade 2 minimum. No substitutes	1
44	42101-44	Brake Pedal	1
46	42101-46	Bolt Assembly. 3/8" NC-16 x 1-1/2" Lg. HHCS with USS Flat Washer, Lock Nut, and Hex Nut.	1
47	42101-47	Bolt Assembly. 5/8" NC-10 x 2-3/4" Lg. HHCS with 3/4" NC Hex Nut, 5/8" NC-10 Jam Nut, 5/8"NC-10 Steel Lock Nut, two(2) 5/8" SAE Flat Washers.	1
48	42101-48	Spring, Brake Pedal Return	1
49	42101-49	Bolt Assembly. 1/2" NC-13 x 1-1/2"Lg. HHCS with Lock Nut and Hex Nut.	1
60	42103-64	1"-20 Castle Nut for Hydraulic Wheel Motor	2
61	42101-61	Wheel Hub With Studs	2
62	42113-09	Cone Type Wheel Nut	16
63	42101-63	Wheel Studs Only for Wheel Hub, Item 61	8
64	42103-63	5/16" Square Key X 1" Lg. for Wheel Hub, Item 61	2
65	42101-64	Bolt Assembly. 1/2" NC-13 x 1-1/4." Lg. HHCS with SAE Flat Washer and Lock Washer.	4
66	42101-65	Bolt Assembly. 1/2" NC-13 x 1-1/4." HHCS with two (2) USS Flat Washers and Steel Lock Nut.	2
71	42101-71	Palm Grip	1
72	42101-72	Grommet	1
73	42101-73	Parking Brake Catch Rod	1
74	42101-74	Set Collar	1
75	42101-75	Clamping Collar	1

SECTION 4
PARTS

4.5 Illustration
Hydraulic System



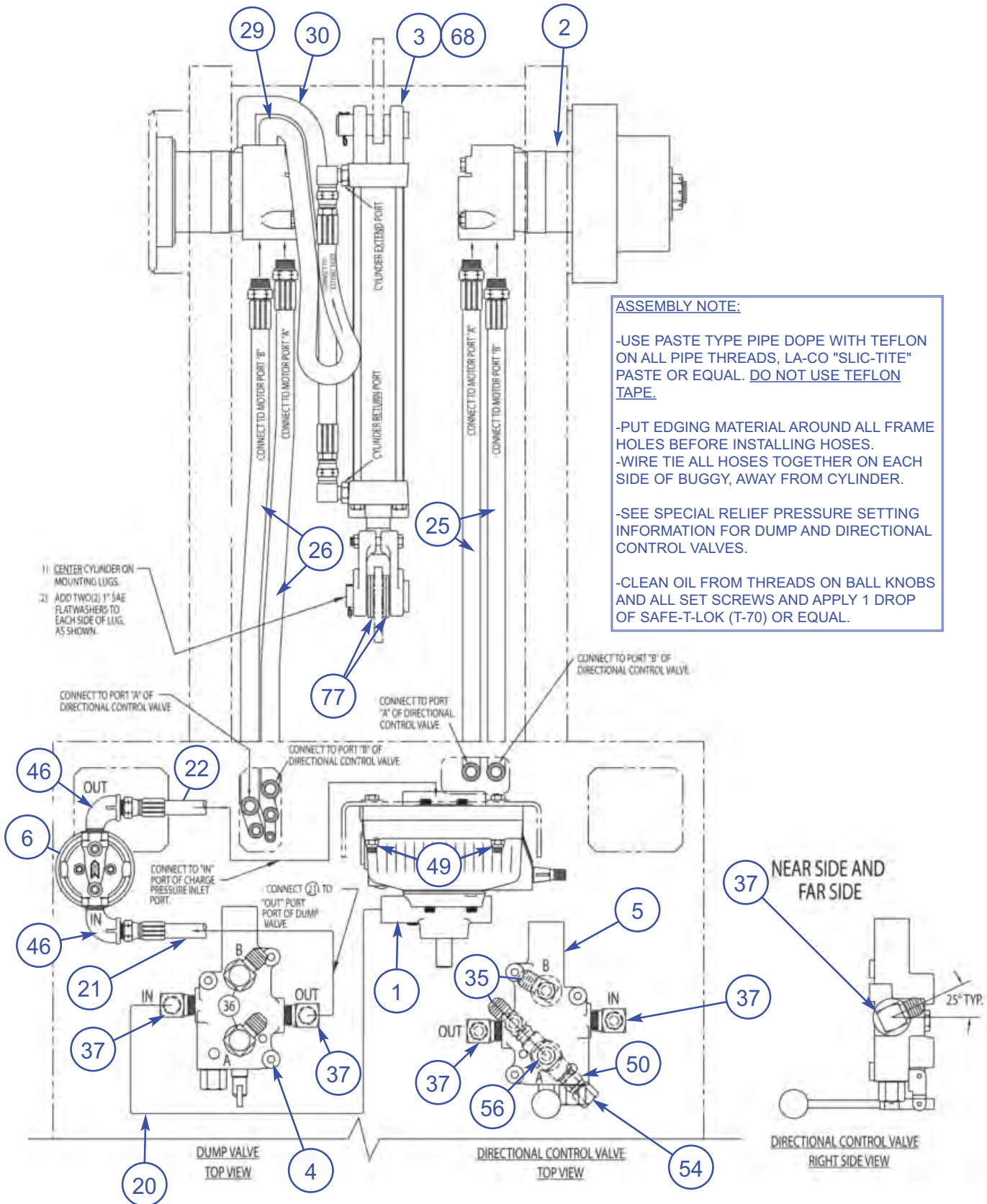
4.5 Parts List Hydraulic System

SECTION 4 PARTS

ITEM	PART#	DESCRIPTION	QTY
1	HM0500	Hydrostatic Pump	1
2	HM0600	Wheel Motor with 5/16" Square X 1" Lg. Key	2
3	HM0700	Hydraulic Cylinder x 2" Diameter Bore. AR16	1
4	HM0800	Dump Valve	1
4A	42103-6g	Dump Valve Assembly (consist of 4, 36, 37)	1
5	HMogoo	Directional Control Valve	1
5A	42103-76	Directional Valve Assembly (consist of 5, 35, 37, 50, 54, 56}	1
6	FI0200	Spin-on Filter Assembly. Complete with Element	1
7	42103-07	Transmission Fan	1
8	42103-08	Pump Side Coupling Half.	1
9	PM0150	Spider Jaw Element.	1
10	42103-10	Flat washer.	1
11	42103-11	Bolt Assembly. 1/4" NC HHCS x 3/4" Long with Lock washer. To attach Transmission Fan	3
12	FG3400	Shaft Spacer.	2
13	42103-13	Woodruff Key (3/16" wide x 3/4" long)	1
16	42103-16	Spin-on Filter Element Only	1
17	FI0350	Reservoir Filler Breather Assembly	1
19	42103-19	Hose Assembly, 15" long	1
20	HH1700	Hose Assembly, 20" long	1
21	42103-21	Hose Assembly, 24" long	1
22	HH1800	Hose Assembly, 18" long	1
23	HH1goo	Hose Assembly, 27" long	1
24	HH2000	Hose Assembly, 30" long	1
25	42103-25	Hose Assembly, 69" long	2
26	42103-26	Hose Assembly, 65" long	2
27	HH2100	Hose Assembly, 18" long w/spring guard	1
28	HH2200	Hose Assembly, 54" long w/spring guard	1
29	HH2300	Hose Assembly, 72" long w/spring guard	1
30	HH2400	Hose Assembly, 66" long w/spring guard	1
31	HH2500	Hose Assembly, 18" long	1
35	FG3800	Male Run Tee	2
36	FG3goo	90° Male Elbow	2
37	FG3700	90° Male Elbow	4
38	FG4000	Straight Thread "O" Ring Elbow	2
40	FG4100	Straight Thread "O" Ring goo Elbow	1
41	FG4200	Straight Thread "O" Ring Branch Tee	1
42	42103-42	90° Male Elbow	1
44	42103-44	Hex Reducer Bushing	1

SECTION 4 PARTS

4.5 Illustration, cont'd Hydraulic System



4.5 Parts List, cont'd Hydraulic System

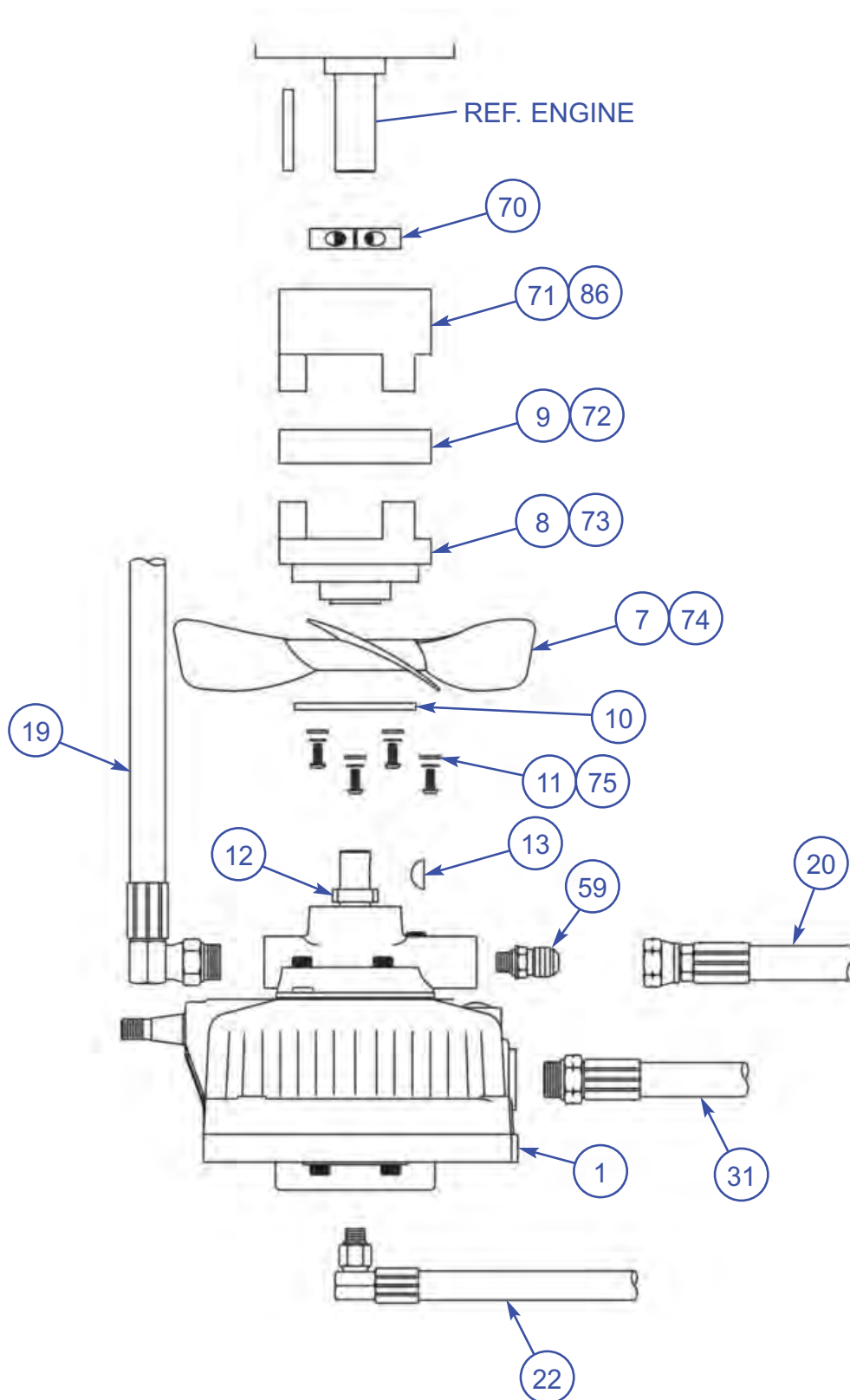
SECTION 4 PARTS

ITEM	PART#	DESCRIPTION	QTY
45	FG4300	90° Male Elbow	1
46	42103-46	90° Street Elbow	2
47	42103-47	Bolt Assembly. 5/16" NC HHCS x 1-3/4" long with USS Flat Washer and Lock Nut	6
48	42103-48	Bolt Assembly. 1/4" NC HHCS x 3/4" long with Split Lock Washer and SAE Flat Washer	2
49	42103-49	Bolt Assembly. 3/8"NC HHCS x 2 1/2" with USS Flat Washer and NyLock Lock Nut)	4
50	42103-50	Straight Male Connector	1
53	42103-53	Fitting Male Run Street Tee	1
54	42103-54	Cap	1
55	FG3600	90° "O" Ring Elbow	2
56	42103-56	Male Branch Tee	1
59	42103-59	Straight Thread "O" Ring Connector	1
60	42103-60	Bolt Assembly. 1/2" NC Hex Socket Flat Head Cap Screw x 2" long with Split Lock Washer and NyLock Lock Nut. To attach Wheel Motor	8
63	42103-63	Wheel Motor Key. 5/16" Square x 1" long	2
64	42103-64	Wheel Motor Castle Nut. 1"-20 Threads per inch	2
65	42103-65	Valve Handle	1
**68	42123-23	Hydraulic Cylinder x 2-1/2" diameter bore.	1
**70	42303-16	Clamping Collar.	1
**71	42123-04	Engine Side Coupling Half.	1
**72	42123-06	Spider Jaw Element.	1
**73	42123-05	Pump Side Coupling Half.	1
**74	42123-01	Transmission Fan.	1
**75	42123-03	Bolt Assembly. B-21 #10-24 American Standard Hex Socket Button Head Cap Screw x 1/2." long with External Star Lock Washer and #10 Flat Washer. For Transmission Fan	4
77	42103-77	Flat Washer. 1" SAE Flat Washer	4
*86	PM0100	Engine Side Coupling Half.	1
87	42103-87	Wheel Motor Cotter Pin. 5/32" x 2" long Steel Plated Cotter Pin.	2

REPLACEMENT SEAL KITS	
PART#	DESCRIPTION
42103-99	AR16 Lift Cylinder Seal Kit
100135	AR21 Lift Cylinder Seal Kit
42103-85	Directional Control Valve and Dump Valve Seal Kit

SECTION 4
PARTS

4.5 Illustration, cont'd
Hydraulic System



**SECTION 4
PARTS**

VISIT US!!!



www.alleneng.com

LIKE US!!!



www.facebook.com/AllenEngineering

FOLLOW US!!!



[@alleneng](https://twitter.com/alleneng)

WATCH US!!!

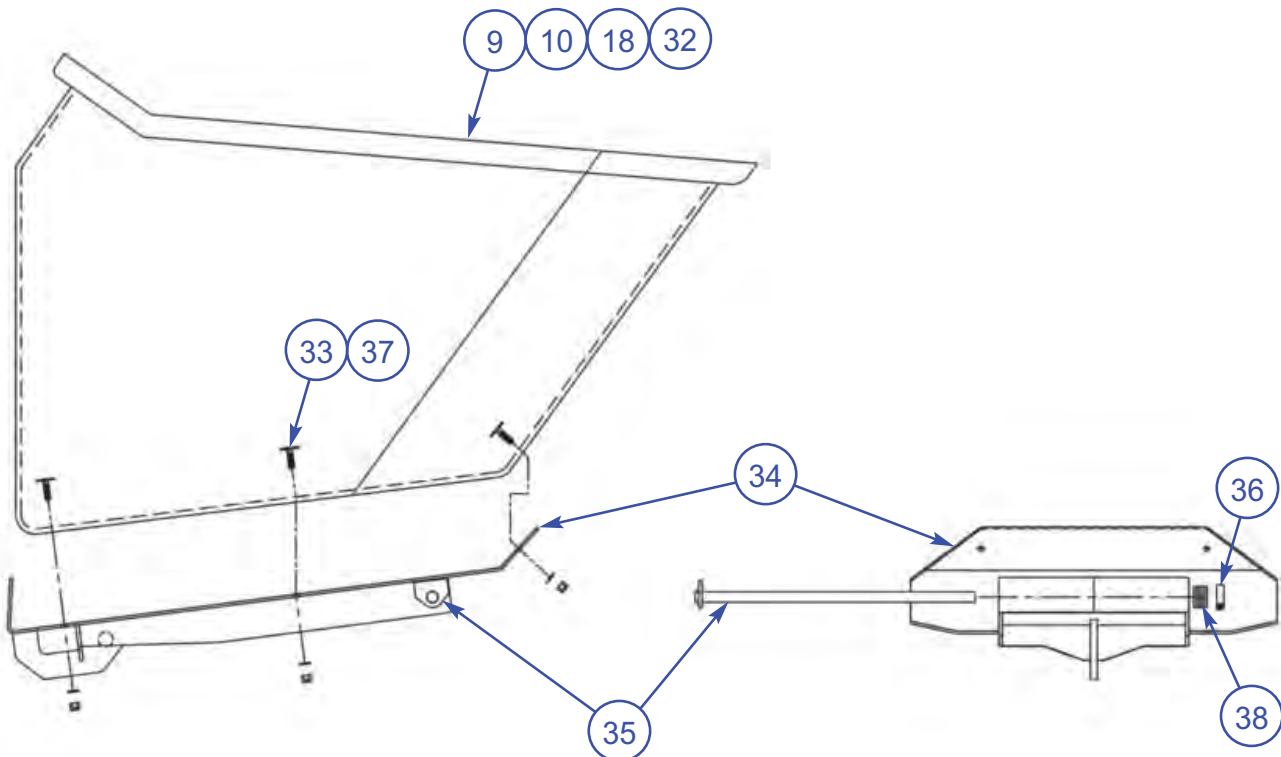
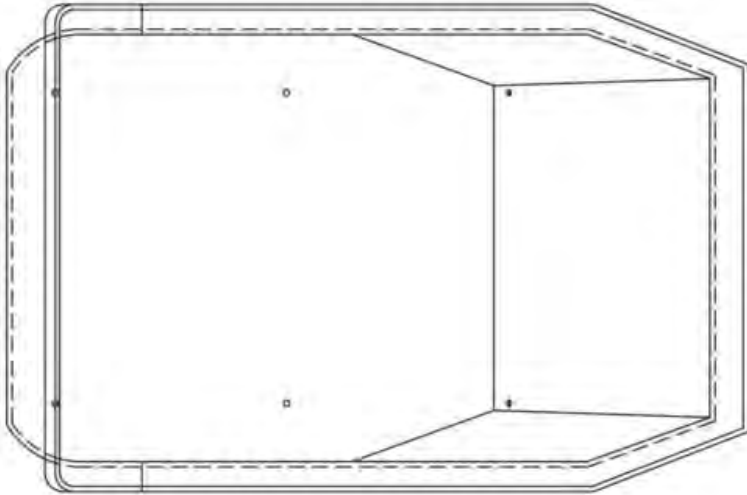


www.youtube.com/AllenMachinery



SECTION 4
PARTS

4.6 Illustration
Bucket and Base Assembly



- 1/2 USS FLAT WASHER
- 3/8" NC CARRIAGE BOLT
- REF. STEEL BUCKET
- 3/8 USS FLAT WASHER
- REF. BASE PLATE
- 3/8" NC STEEL CRIMP LOCK NUT

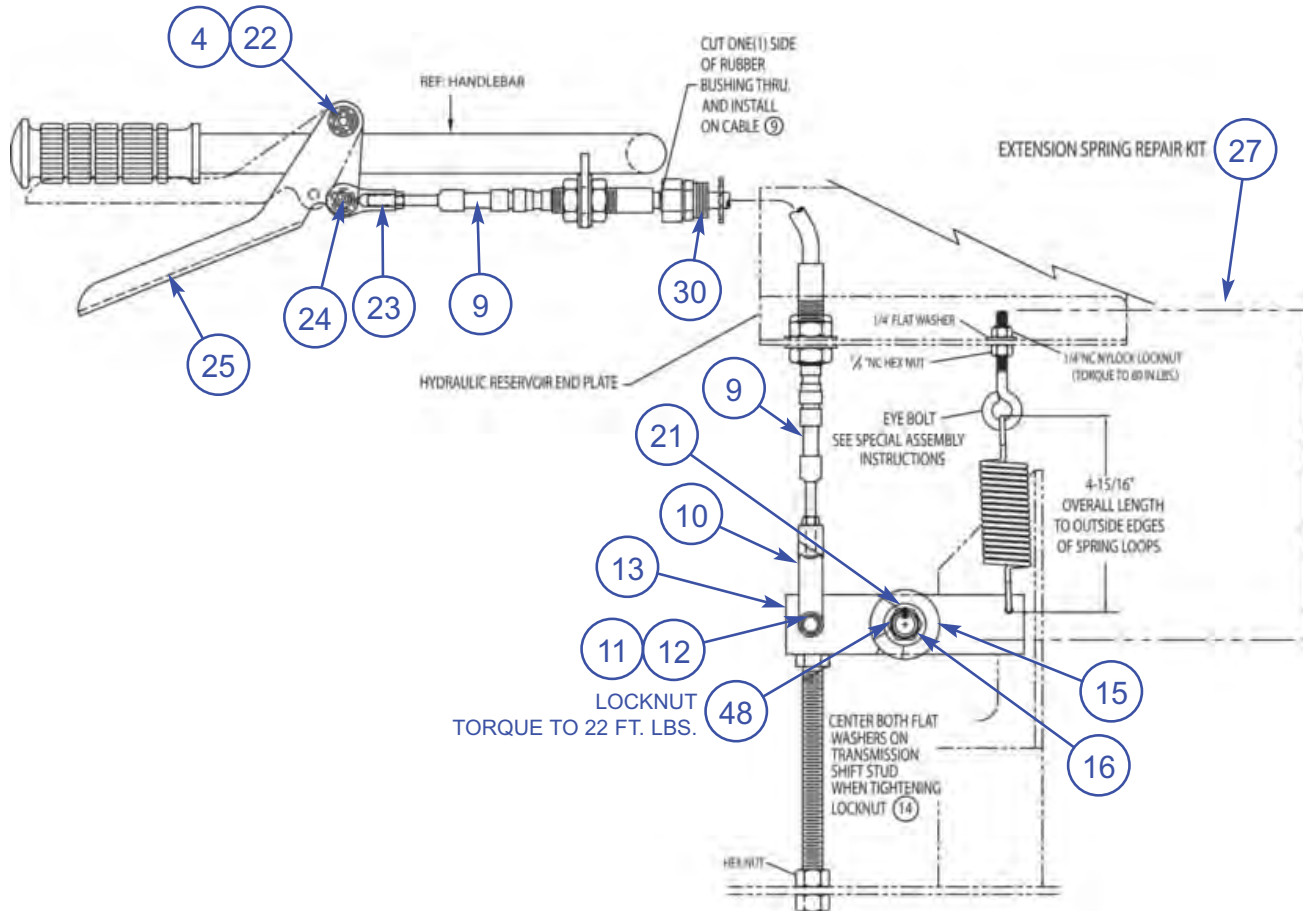
4.6 Parts List Bucket and Base Assembly

SECTION 4 PARTS

ITEM	PART#	DESCRIPTION	QTY
9	42106-03	16 Cubic Foot Poly Bucket- B16/TB16	1
10	42105-01	16 Cubic Foot Steel Bucket- B16/TB16	1
18	42122-01	21 Cubic Foot Poly Bucket- B21	1
32	42121-08	21 Cubic Foot Steel Bucket- B21	1
33	42106-02	Elevator Bolt Assembly for Poly Buckets 3/8" NC Elevator Bolt x 1-1/2" Long with 3/8" SAE Flat Washer and 3/8" NC Nylock Locknut.	6
34	42110-02	Bucket Base Plate	1
35	42110-11	Pivot Pin	1
36	42110-16	Clamping Collar	1
37	42105-10	Carriage Bolt Assembly for Steel Buckets. 3/8" NC Carriage Bolt x 1" Long with 1/2" USS Flat Washer, 3/8" USS Flat Washer and 3/8"NC Steel Crimp Locknut.	6
38	42110-17	Washer Spacer. 3/4" SAE Flat Washer Discontinued 09/08	6

SECTION 4
PARTS

4.7 Illustration
Travel Speed Control Assembly



4.7 Parts List Travel Speed Control Assembly

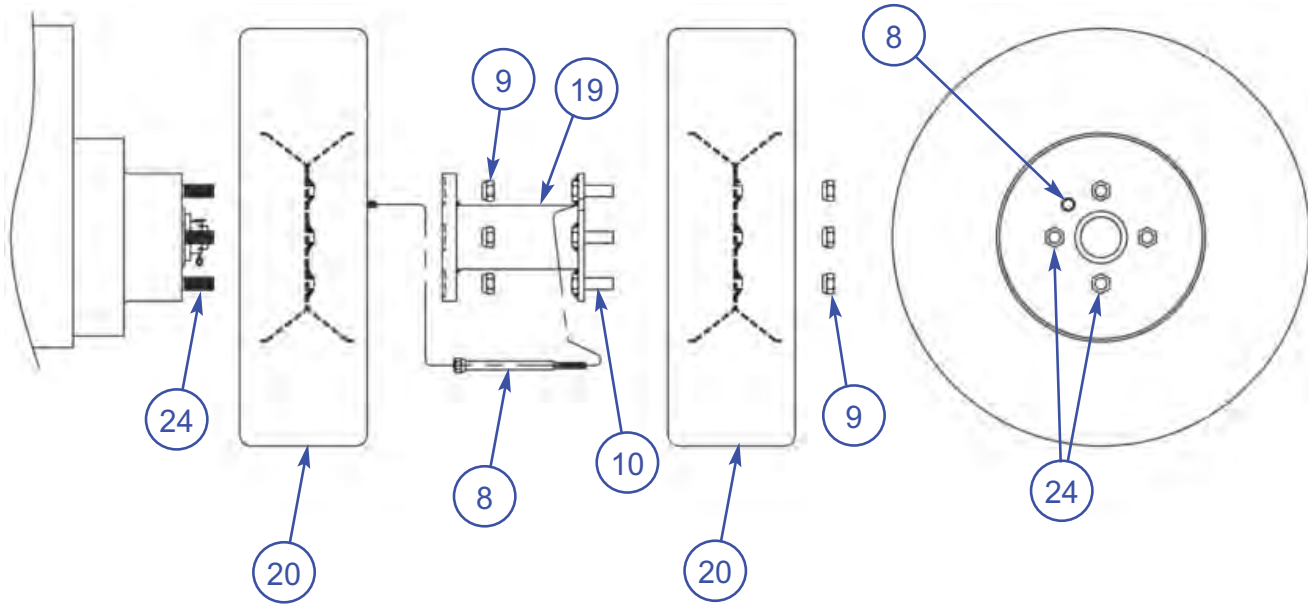
SECTION 4 PARTS

ITEM	PART#	DESCRIPTION	QTY
4	42107-04	Shoulder Bolt with Nylock Lock Nut	1
9	CT0900	Shift Cable	1
10	MS2500	Adjustable Yoke End	1
11	42107-11	Clevis Pin	1
12	42107-12	Plated Cotter Pin (3/32" x 3/4")	1
13	42107-13	Transmission Shift Bar	1
14	42107-14	1/2" NC Steel Lock Nut	1
15	42107-15	5/ 8" USS Flat Washer	1
16	42107-16	V2" SAE Flat Washer	1
17	42107-17	Neutral Stop Bolt With Hex Nut	1
21	42107-21	1/ 8" x 5/8" Woodruff Key	1
22	42107-22	3/8" SAE Flat Washer	2
23	42107-23	Tie Rod End	1
24	42107-24	Shoulder Bolt with Nylock Lock Nut	1
25	42107-25	Travel Speed Control Lever	1
27	42107-27	<p style="text-align: center;">Extension Spring Repair Kit Consists of: Extension Spring 1/4 NC Eye Bolt 1/4 USS Flat Washer 1/4 NC Nylock Lock Nut Important Assembly Note:</p> <p>1) Adjust the Eye Bolt so the length of the Extension Spring is 4-15/16" from the outside edges of the end Spring Loops when the Transmission Shift Bar, item 13, is in the NEUTRAL position (against the Neutral Stop Bolt, item 17) as shown in the assembly drawing.</p> <p>2) Then turn the Position the "Eye" of the Eye Bolt to line to with the top Spring Loop as shown in the assembly drawing.</p> <p>3) After completion of steps 1-2, hold the Eye Bolt position and tighten the" NC Nylock Lock Nut to 80 in.lbs.</p>	1
30	42107-30	Metal Cord Grip	1

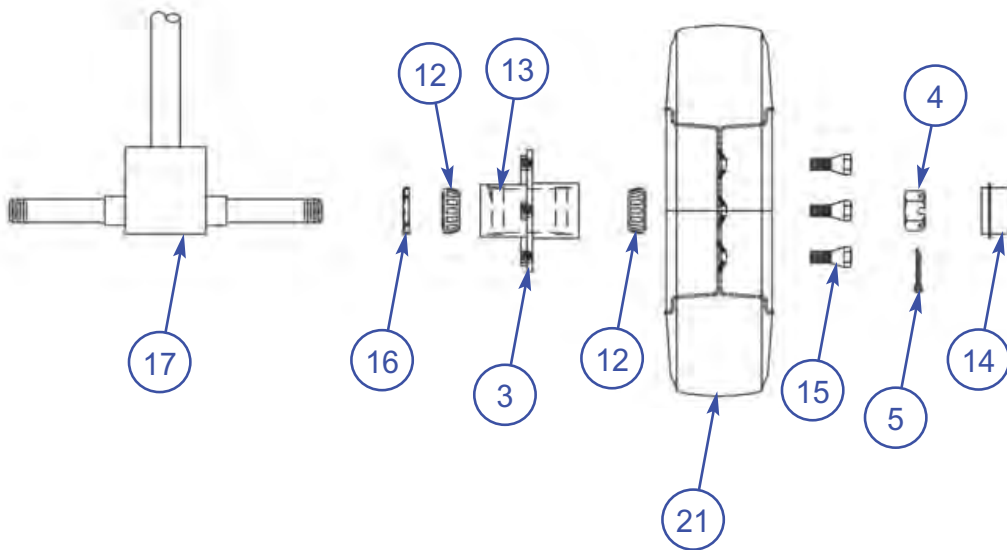
SECTION 4
PARTS

4.8 Illustration
Wheel Assemblies

DRIVE/FRONT WHEEL ASSEMBLY



STEERING/REAR WHEEL ASSEMBLY



4.8 Parts List Wheel Assemblies

SECTION 4 PARTS

DRIVE/FRONT WHEEL ASSEMBLY

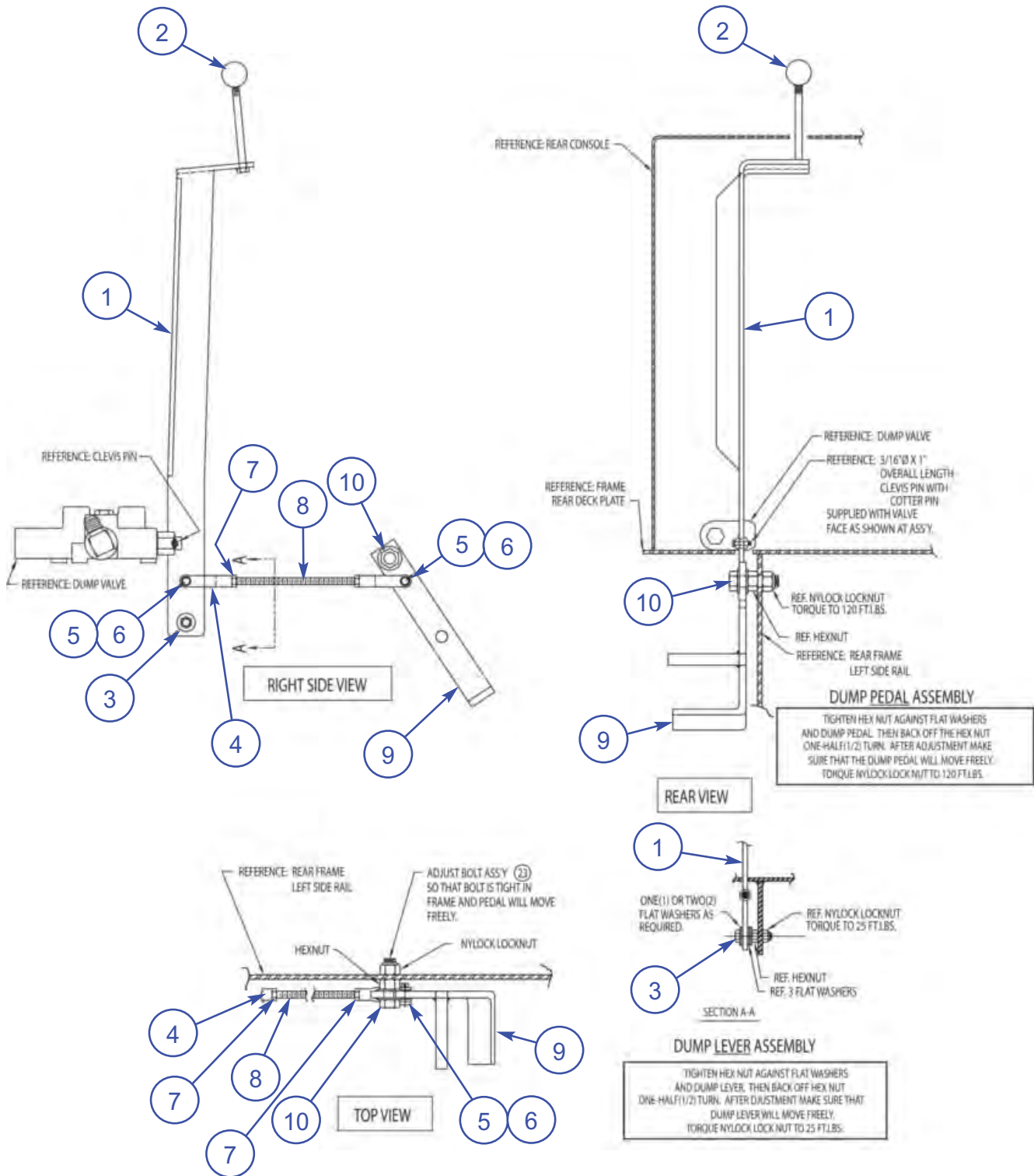
ITEM	PART#	DESCRIPTION	QTY/ Machine
8	MS4000	Air Valve Extender. Discontinued March, 2002	2
9	42113-09	Cone Wheel Nut.	16
10	42116-05	Wheel Studs for Wheel Spacer, item 19.	8
19	42116-01	Wheel Spacer	2
20	42113-20	Foam Filled Drive Tire and Wheel Assembly	4
24	42101-63	Brake Hub Wheel Studs	8

STEERING/REAR WHEEL ASSEMBLY

ITEM	PART#	DESCRIPTION	QTY/ Machine
3	42113-03	High Speed Hub Complete with Bearings, Grease Seal and Grease Cap	2
4	42113-04	Castle Nut.	2
5	42113-05	Cotter Pin Ws" x 1 Y.")	2
12	42113-12	Roller Bearing Cone	4
13	42113-13	Roller Bearing Cup	4
14	42113-14	Grease Cap	2
15	42113-15	Wheel Bolts	8
16	42113-16	Grease Seal	2
17	32100-01	Steering Column	1
21	42113-21	Foam Filled Steering Tire and Wheel Assembly	2

SECTION 4 PARTS

4.9 Illustration Console Mounted Dump Lever



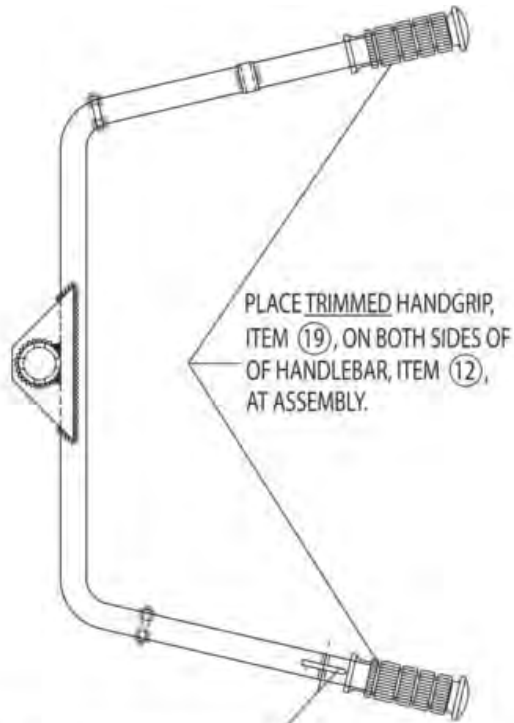
4.9 Parts List Console Mounted Dump Lever

SECTION 4 PARTS

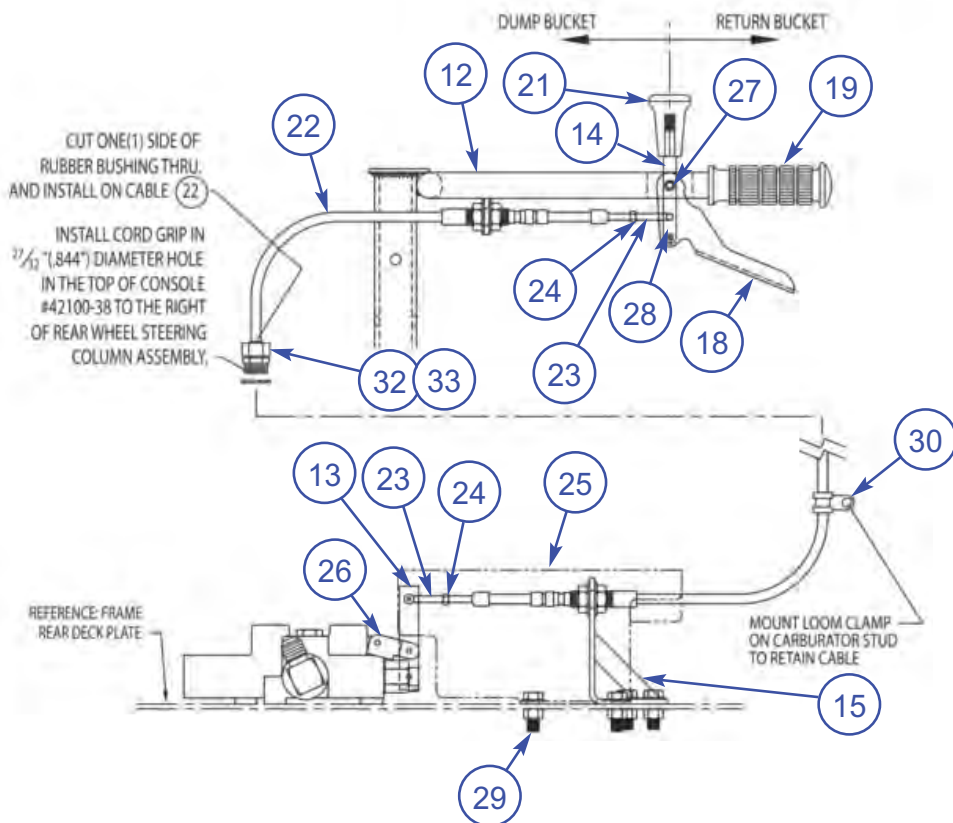
ITEM	PART#	DESCRIPTION	QTY
1	42117-02	Dump Lever	1
2	MS2100	Plastic Ball Knob	1
3	42117-08	Bolt Assembly. 3/8" NC X 1-3/4" HHCS with 5 USS Flat Washers, 1 Hex Nut, and 1 Nylock Lock Nut.	1
4	42117-09	Yoke	2
5	42107-11	Clevis Pin	2
6	42117-11	Cotter Pin. 3/32" x 3/4" Long	2
7	42117-12	Hex Nut. 3/8" NF-24	2
8	42117-13	Dump Rod.	1
9	42117-17	Dump Pedal.	1
10	42117-23	Bolt Assembly. 5/8" NC x 2-1/4" HHCS with 2 SAE Flat Washers, 1 Hex Nut, and NyLock Lock Nut.	1

SECTION 4
PARTS

4.10 Illustration
Handlebar Mounted Dump Lever



13/64" WIDE SLOT X 1-3/4" LG.
FOR HANDLEBAR BUCKET DUMP LEVER



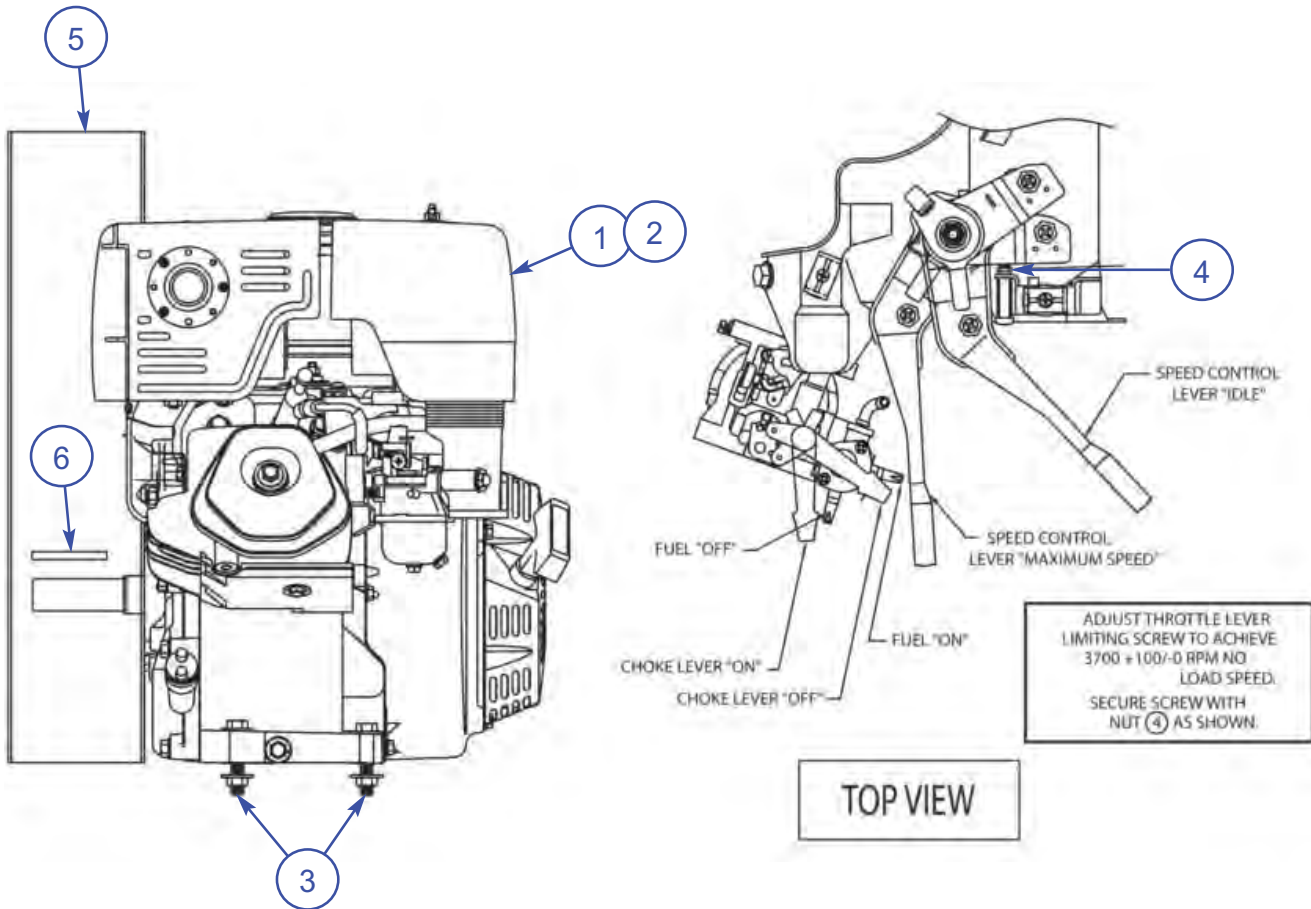
4.10 Parts List Handlebar Mounted Dump Lever

SECTION 4 PARTS

ITEM	PART#	DESCRIPTION	QTY
12	42126-12	Handlebar with Dump Mount	1
13	42126-13	Handlebar Dump Lever	1
14	42126-14	Dump Rod Lever without Knob	1
15	42126-15	Cable Mounting Bracket	1
18	42126-18	Dump Lever Pull Handle	1
19	42102-08	Handlebar Grip, Trimmed	2
21	42126-21	Dump Lever Knob	1
22	42126-22	Dump Cable	1
23	42126-23	Clevis with Pin	2
24	42126-24	Hex Nut. #10-32 UNF Plated	2
25	42126-25	Dump Cable Cover	1
26	42126-26	Valve Link Bracket Kit	1
27	42126-27	Bolt Assembly. 1/4" NC HHCS x 1-3/4" Long with 2 SAE Flat Washers, Steel Lock Nut.	1
28	42126-28	Bolt Assembly. 1/4" NC x 1-X" Long Shoulder Bolt with 10-24 Nylock Lock Nut.	1
29	42126-29	Bolt Assembly. 3/8" NC HHCS x 1-1/4" Long with SAE Flat Washer, Steel Crimp Lock Nut.	5
30	40120-27	3/8" I.D. Loom Clamp.	1
32	42126-32	Metal Cord Grip	1
33	42107-31	Stamped Steel Locknut	1

SECTION 4
PARTS

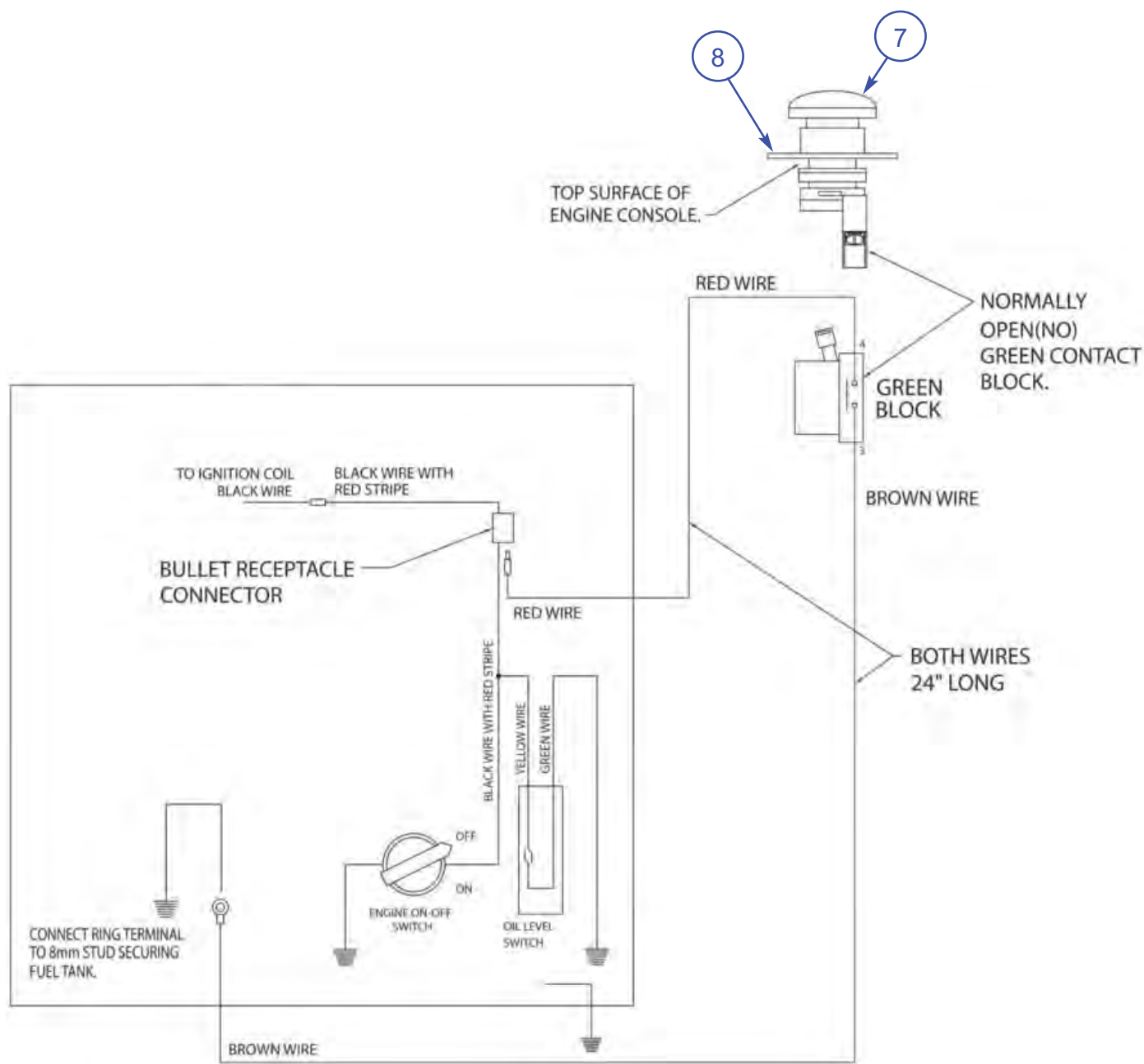
4.11 Illustration and Parts List
13 HP Honda Engine with Recoil
and Electric Start - AR16



ITEM	PART #	DESCRIPTION	QTY
1	EN0600	13 HP Honda Engine with Recoil Start	1
2	EN1700	13 HP Honda Engine with Electric Start with Recoil Backup	1
3	32103-02	3/8" NC HHCS x 1-3/4" Long with one(1) SAE Flatwasher, one(1) USS Flat Washer and one(1) Lock Nut	4
4	45048-05	Throttle Stop Bolt Retaining Nut. M5 x 0.8 Hex Nut Plated. Metric	1
5	32103-15	Heat Shield	1
6	45048-06	Key - 1/4" SQ x 1-3/4" Long	1

4.12 Illustration and Parts List Electric Schematic for AR16 with 13HP Honda Engine (Recoil Start)

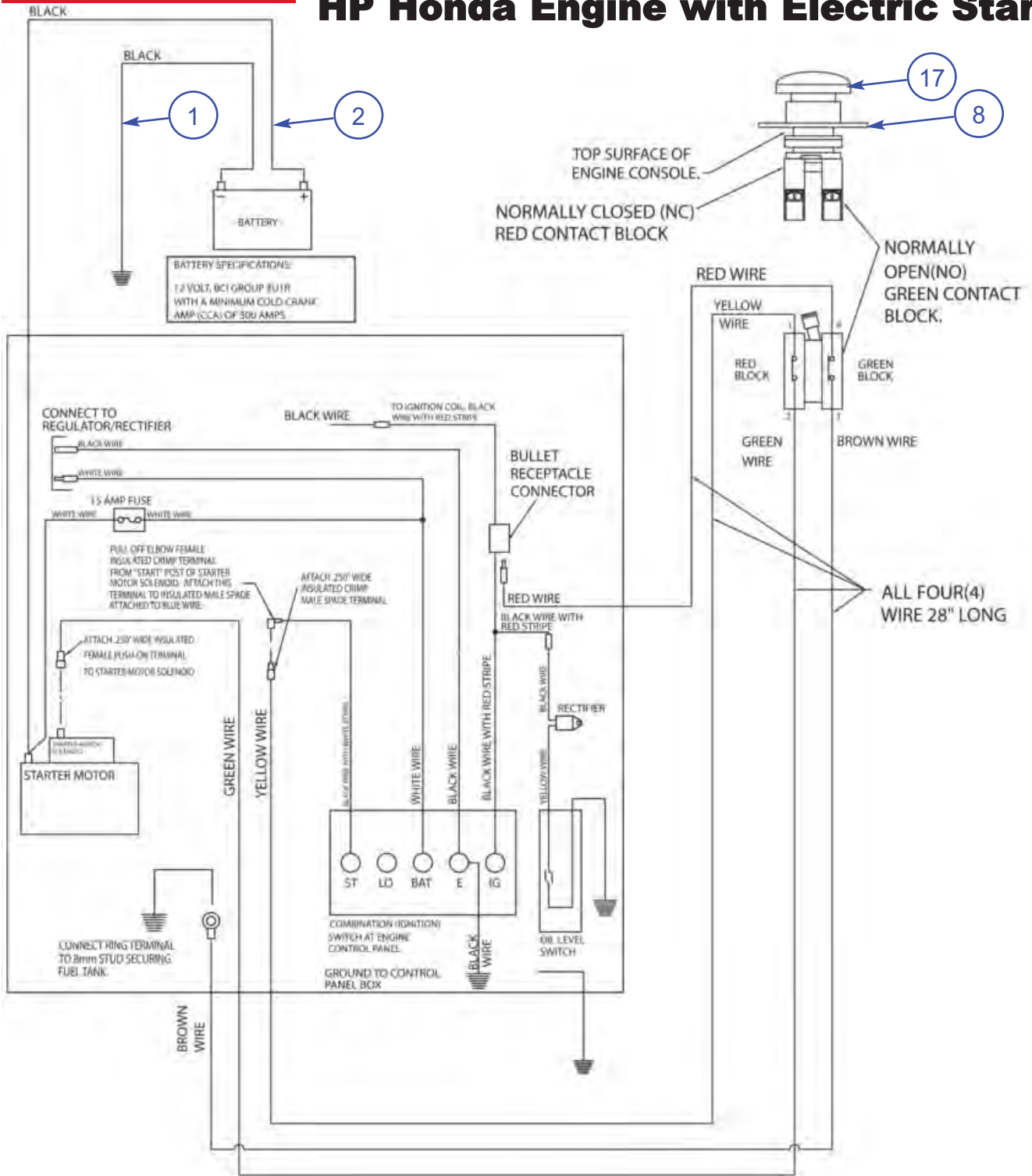
SECTION 4 PARTS



ITEM	PART #	DESCRIPTION	QTY
7	45049-25	Emergency Stop Switch	1
8	48200-05	"Emergency Stop" Legend Plate	1

SECTION 4 PARTS

4.13 Illustration Electric Schematic fo AR16 with 13 HP Honda Engine with Electric Start



4.13 Parts List

Electric Schematic fo AR16 with 13 HP Honda Engine with Electric Start

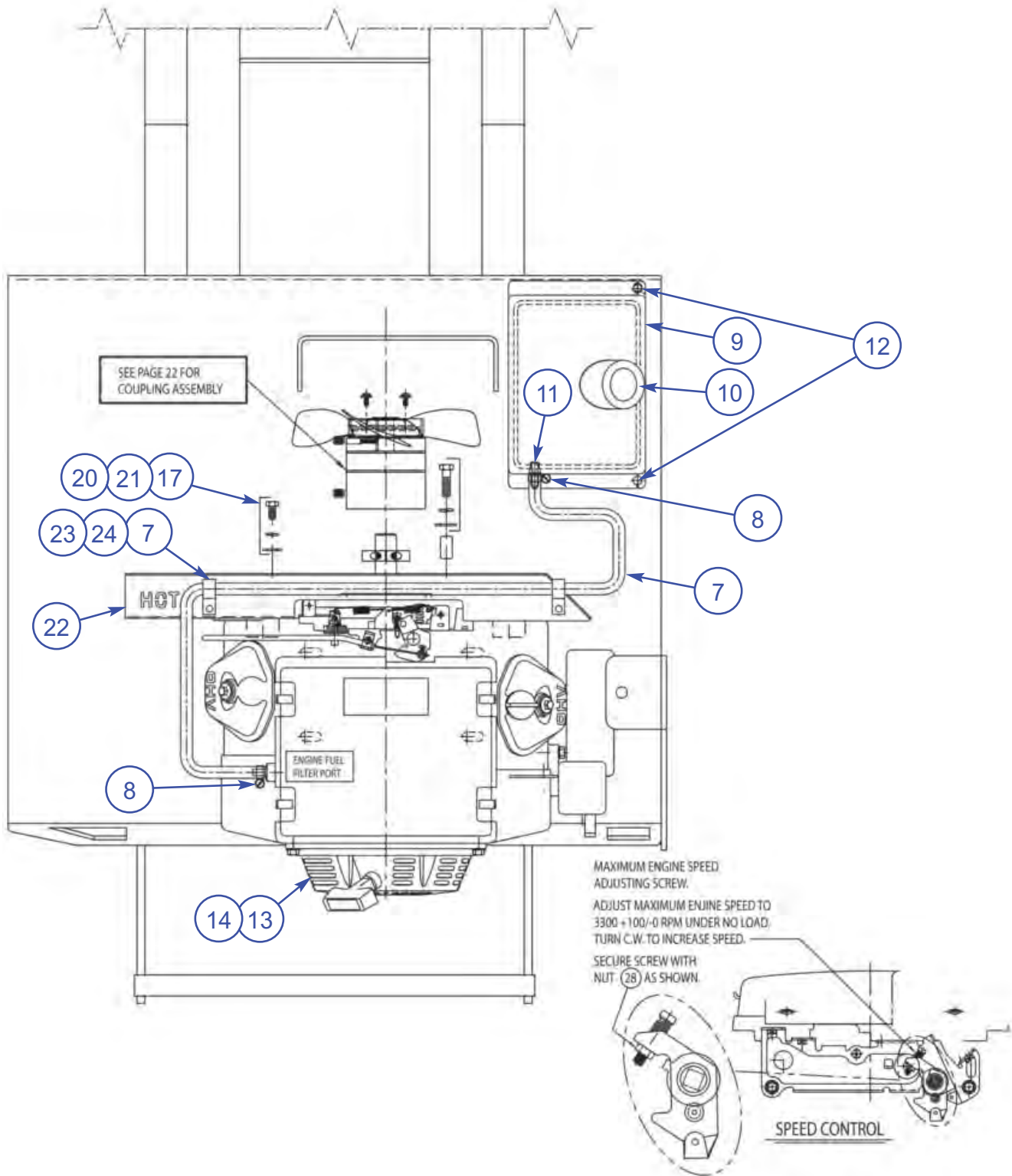
SECTION 4 PARTS

ITEM	PART #	DESCRIPTION	QTY
1	BF0200	Black Ground Cable x 10" Long	1
2	BF0100	Black Positive Cable x 36" Long	1
8	48200-05	Emergency Stop Switch	1
17	45043-04	"Emergency Stop" Legend Plate	1



SECTION 4
PARTS

4.14 Illustration
Electric Schematic fo AR21 with 20
HP Honda Engine with Electric Start



4.14 Parts List

Electric Schematic fo AR21 with 20 HP Honda Engine with Electric Start

SECTION 4 PARTS

ITEM	PART#	DESCRIPTION	QTY
7	42123-08	1/4" I.D. Fuel Hose x 52" Long	1
8	FG0400	1/2" I.D. Worm Type Hose Clamp	2
9	42123-10	Fuel Tank	1
10	42123-18	Fuel Cap	1
11	42123-22	Barbed Connector Fitting. Brass	1
12	42123-22	3/8" NC HHCS x 1" Long with two(2) USS Flat Washers and one(1) Lock Nut. For item 9	2
13	45320-09	20 HP Honda Engine with Electric Start and Recoil Backup (less Muffler Assembly and Oil Filter Extension Kit).	1
14	42124-02	Muffler Assembly for item 13.	1
17	42124-08	Bolt Assembly. 8mm/1.25 Pitch Thread HHCS x 16mm Long	1
18	42124-09	Pipe Coupling	1
19	42124-10	Bolt Assembly. 7/16" NC HHCS x 2" Long with USS Flat Washer, Split Lock Washer	1
20	42124-11	5/16" USS Flat Washer	1
21	42124-12	5/16" USS Lock Washer	1
22	42124-17	Heat Shield	1
23	42124-18	Bolt Assembly. 1/4" NC HHCS x 1-1/4" Long with Lock Nut.	2
24	42124-19	Pipe Coupling	2
25	40112-68	1/2" Loom Clamp	2
27	42124-14	Bolt Assembly. 3/8" NC HHCS x 2" Long with USS Flat Washer, Lock Nut. For attaching Engine to Buggy Frame. Not Shown.	4
28	42124-15	Throttle Stop Bolt Retaining Nut. M5x0.8 Hex Nut Plated. Metric	1



INTENTIONALLY BLANK

YOUR TOTAL SOURCE FOR CONCRETE EQUIPMENT



VISIT US!!!  www.alleneng.com

LIKE US!!!  www.facebook.com/AllenEngineering

FOLLOW US!!!  @alleneng

WATCH US!!!  www.youtube.com/AllenMachinery



800-643-0095 Or 870-236-7751
FAX: 800-643-0097 Or 870-236-3934
P.O. Box 819 Paragould, Arkansas 72451 USA
www.alleneng.com