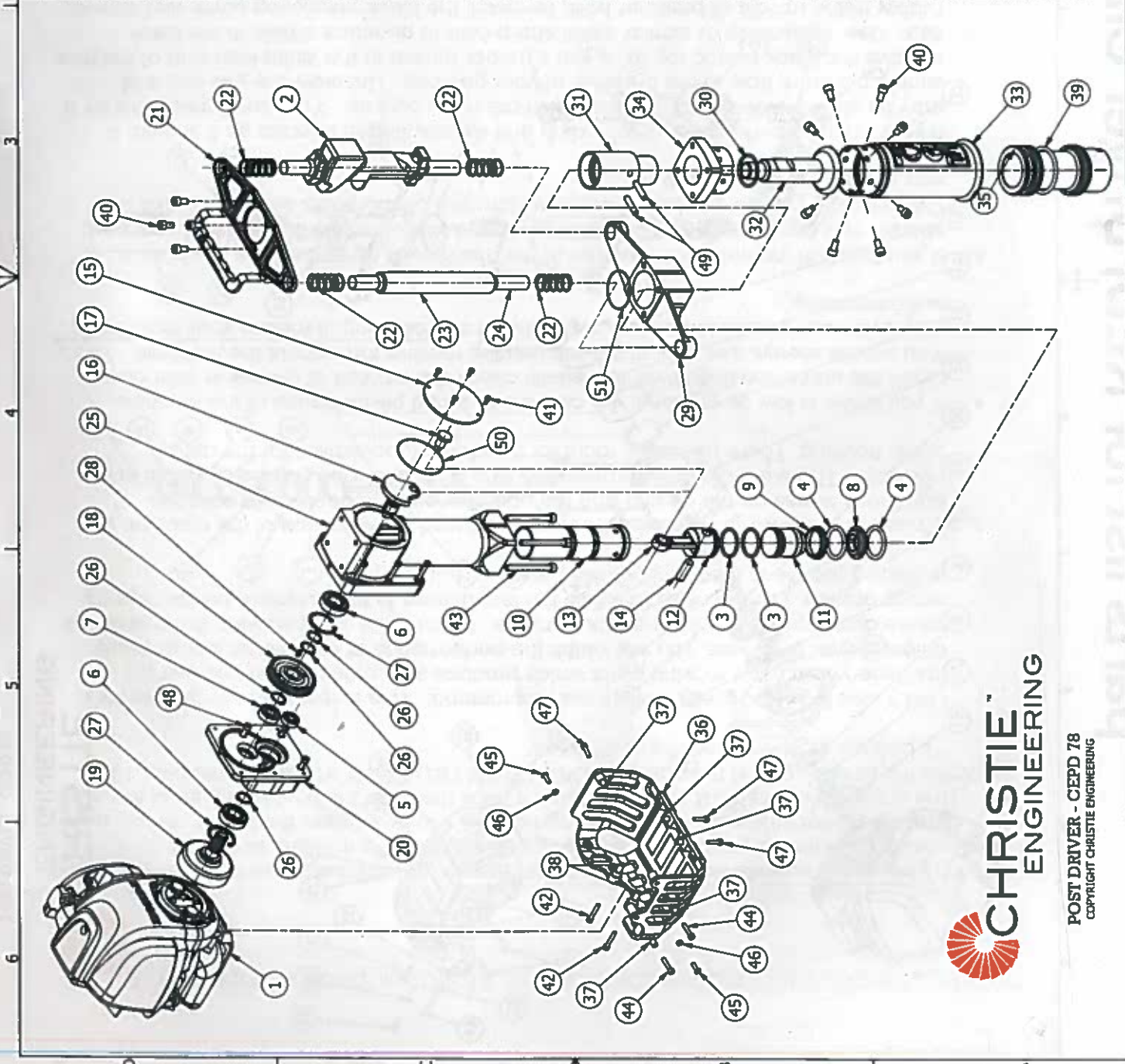


POST DRIVER - CEPD 78 PARTS LIST

ITEM	QTY	PART NUMBER	DESCRIPTION
1	1	G335	HONDA MOTOR
2	1	17850ML1741	THROTTLE LEVER ASSEMBLY SWITCH O RING
3	2	CEPD BS222 OR37 7-3.53V	O RING
4	2	CEPD BS326 OR40 65-5.34	DAMPER O RING
5	1	CEPD 6000-2RS	DEEP GROOVE BALL BEARINGS
6	2	CEPD 6004-2RS	DEEP GROOVE BALL BEARINGS
7	1	CEPD 6201-2RS	DEEP GROOVE BALL BEARINGS
8	1	CEPD 20	HAMMER GUIDE
9	1	CEPD 22	DAMPER WASHER
10	1	CEPD 24-1	STEEL CYLINDER LINER
11	1	CEPD 27	TOP HAMMER
12	1	CEPD 30	PISTON
13	1	CEPD 31	CONNECTING ROD 01
14	1	CEPD 31-A	GUIDEON PIN 12 x 40
15	1	CEPD 37	COVER PLATE
16	1	CEPD 38	CRANK SHAFT
17	1	CEPD 38 PIN	CRANK PIN LH S1214
18	1	CEPD 54-58	5/8T DRIVEN GEAR
19	1	CEPD 60-13	CLUTCH DRUM
20	1	CEPD 67-1	CAST CLUTCH HOUSING
21	1	CEPD 920	HANDLE MOUNT TOP BRACKET
22	4	CEPD 921	SPRING
23	1	CEPD 921-A	HANDLE RUBBER
24	2	CEPD 922	HANDLEBAR
25	1	CEPD 924	CRANK HOUSING
26	4	CEPD CC 20x1.20	EXTERNAL CIRCLIP
27	2	CEPD CC 42x1.75	INTERNAL CIRCLIP
28	1	CEPD M4x12	PARALLEL KEY
29	1	CEPD 725	CAST BOTTOM HOUSING
30	1	CEPD BS220 OR44.05-3.53V	O RING
31	1	CEPD 936	HAMMER HOUSING (CEPD 78)
32	1	3rd HAMMER (CEPD 78)	3rd HAMMER (CEPD 78)
33	1	CEPD 931	BOTTOM GUIDE TUBE (CEPD 78)
34	1	CEPD 938	FLANGED ADAPTER (CEPD 78)
35	1	CEPD 930	REDUCER 78-52 mm
36	1	CEPD GUARD	CEPD GUARD
37	5	CEPD SPACER 6.5x10	SPACER 6.5x10
38	2	CEPD SPACER 6.5x14	SPACER 6.5x14
39	2	CEPD BS334 OR62.87-5.34	REDUCER O RING
40	12	CEPD M816 SHCS	M8 x 16 SHCS
41	4	CEPD M410 SHCS	M4 x 10 SHCS
42	8	CEPD M530 SHCS	M5 x 30 SHCS
43	4	CEPD M660 SHCS	M6 x 60 SHCS
44	2	CEPD M525 SHCS	M5 x 25 SHCS
45	2	CEPD M516 BHCS	M5 x 16 BHCS
46	2	CEPD M5 HEX NUT	M5 HEX NUT
47	3	CEPD M520 SHCS	M5 x 20 SHCS
48	4	CEPD M630 SHCS	M6 x 30 SHCS
49	2	CEPD PIN 6x36	PIN 6 x 36
50	1	CEPD BS040 OR72.75-1.78	O RING
51	1	CEPD BS035 OR56.87-1.78	O RING



CHRISTIE ENGINEERING
 POST DRIVER - CEPD 78
 COPYRIGHT CHRISTIE ENGINEERING