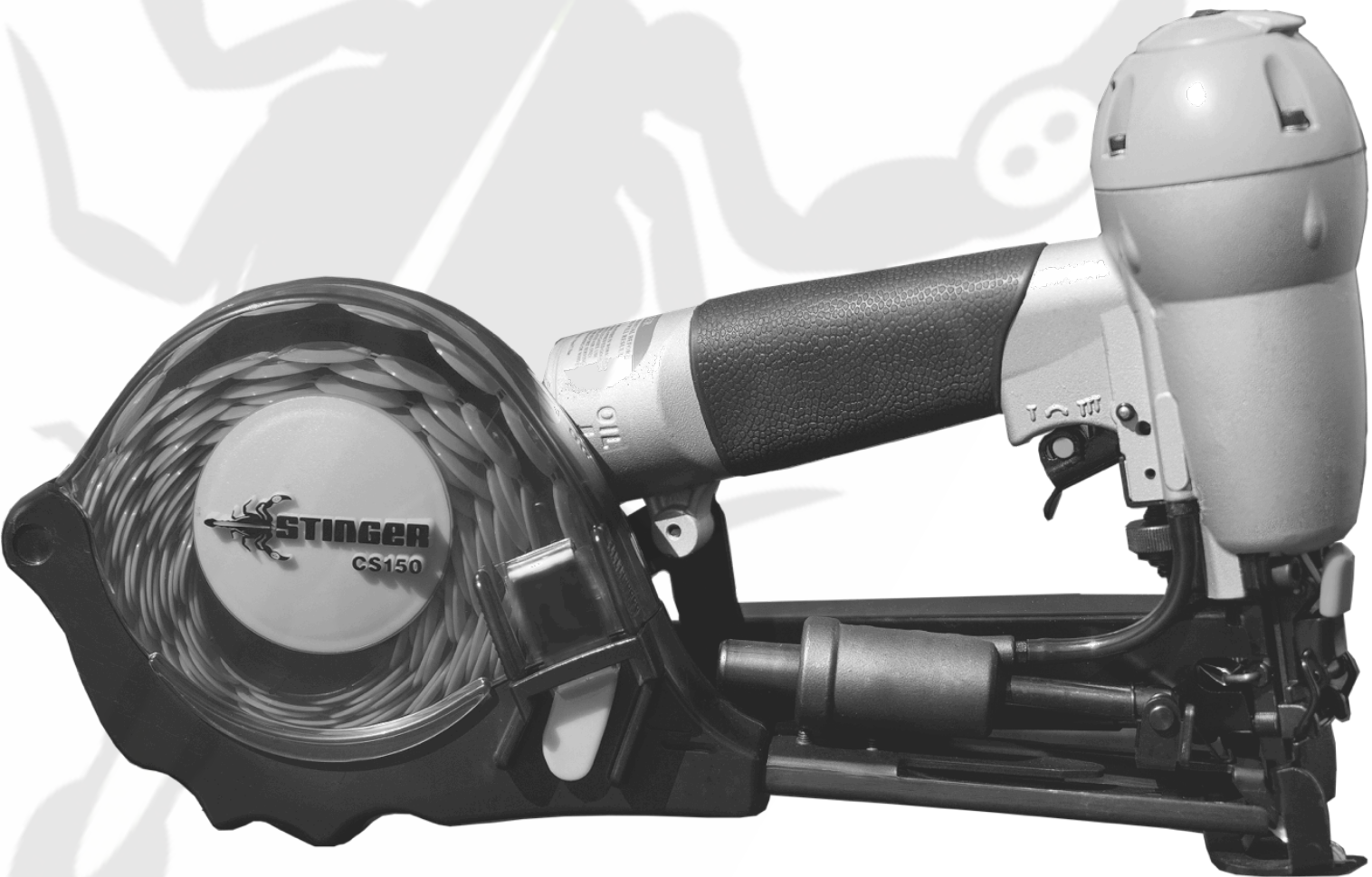


# STINGER®

## CS150 CAP STAPLER OWNER'S MANUAL

- Operation
- Safety
- Maintenance
- Warranty



[www.stingerworld.com](http://www.stingerworld.com)



**PLEASE READ!**

This manual contains important information about product safety.

REV 06/15

## WELCOME TO STINGER

Congratulations on purchasing the **STINGER CS150** Cap Stapler. You have selected a brand and a tool that you can count on to deliver best practice installation, and perform job after job.

Please take the time to read and understand the information contained in this Owner's Manual before operating or maintaining the **STINGER CS150** Cap Stapler.

The **CS150** is intended for securing housewrap, foamboard and roofing felt only.

Improper use of the **CS150** could result in serious injury or even death. Most accidents occur because of the failure to observe basic safety rules and precautions, which are outlined in the "Important Information" section of this manual.

This Owner's Manual should be available to anyone who plans to operate the **CS150**.

## TABLE OF CONTENTS

• Important Information	1
• Tool Specifications	4
• Loading the Tool	5
• Operating the Tool	6
• <b>STINGER CS150</b> Schematic	8
• <b>STINGER CS150</b> Parts List	9
• Maintenance and Storage	10
• Warranty	11
• Troubleshooting	12

## IMPORTANT INFORMATION



### PERSONAL SAFETY ITEMS

- Do not use tool prior to reading the Owner's Manual.
- Always wear eye protection that conforms to ANSI requirements (Z87.1) and provides protection against flying particles both from the front and side. Eye protection should be worn by the operator and by others in the work area. Eye protection is required to protect against flying fasteners and debris that could possibly cause severe eye injury.
- The employer is responsible to enforce the use of eye protection equipment by the tool operator and all other personnel in the work area.
- To prevent accidental injuries:
  - Handle the tool with care
  - Always assume that the tool contains fasteners
  - Always disconnect the air hose from the **STINGER CS150** when:
    - loading staples and/or caps
    - performing inspection, maintenance or repair
    - clearing a staple or collated cap jam
    - the tool is not in use
    - leaving the work area
    - moving the **STINGER CS150** to another work location
    - handing the **STINGER CS150** to another person
    - storing the tool
  - Never point the tool toward yourself or anyone else
  - Never engage in horseplay
  - Never hold or carry the tool with a finger on the trigger
  - Never place a hand or any other part of the body in the fastener discharge area of the tool while the air supply is connected



## IMPORTANT INFORMATION

### AIR SUPPLY AND CONNECTIONS

- Use only clean, regulated compressed air as a power source for this tool. Do not use bottle gases, combustible gases or oxygen as a power source for the tool as the tool may explode.
- Do not use air supply pressures that exceed **105 PSI**. Exceeding the recommended maximum operating air pressure will greatly increase tool wear.
- The air supply must be capable of maintaining the operating air pressure of the tool. Pressure drops in the air supply can reduce the tool's driving power.
- Use a pressure regulator and gauge to allow visual inspection of the air pressure being delivered to the tool.
- Use air hoses that have rated pressures of up to 150% of the maximum pressure that can be generated by the power source. The supply hose should contain fittings that will provide quick disconnecting from the male plug on the tool.
- Use quick connect fittings that allow the tool to be unhooked from the air supply quickly and easily.
- Do not use fittings that will not allow the tool to exhaust when the air supply is disconnected.

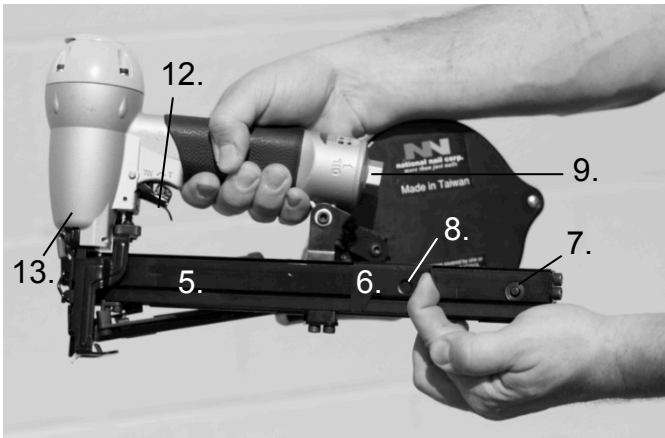
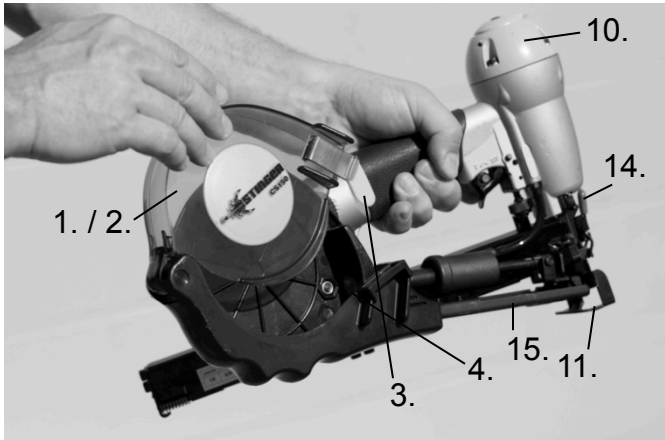
## IMPORTANT INFORMATION

### OPERATION OF THE TOOL

- Never inspect, maintain, repair, adjust, clear a jam or store the tool with the air connected.
- Never use the tool in proximity of flammable gases or liquids, as some tools will create sparks that can be an ignition source for a fire or explosion.
- Always inspect the safety device for damage and proper operation prior to operation.
- Never assume the tool is empty of fasteners.
- Never point the tool toward yourself or any other persons.
- Never cycle the tool unless it is in contact with the work-piece.
- Never use the tool as a hammer or wedging device or drop to the floor from any height.
- Always remove your finger from the trigger when pausing from cycling.
- Never tamper with the safety device or use the tool if the safety device is not functioning properly.
- Use only **7/8", 1 1/4" or 1 1/2" STINGER StaplePac®** cap fasteners with the **STINGER CS150** Cap Stapler. Never use any fasteners that are not specified for use in this tool. The **CS150** holds 1 coil of plastic caps (200 caps) and 2 strips of staples (100 staples each).

## TOOL SPECIFICATIONS

Operating pressure	95-105 psi
Weight	4.2lbs
Staple capacity	200 staples (2-100 count strips)
Cap capacity	200 plastic collated caps (1 reel)
Air inlet	1/4"
Fasteners	<b>STINGER StaplePac® only.</b> Each 2000 count StaplePac consists of 20 strips of 7/8", 1-1/4" and 1-1/2" 18 gauge staples (100 staples per strip) and 10 reels of 1" diameter plastic collated caps (200 caps per reel).



1. Magazine
2. Magazine Cover
3. Cover Release Tab
4. Cap Feeder
5. Staple Track
6. Staple Follower
7. Catch Button
8. Latch
9. End Cap
10. Exhaust
11. Safety
12. Trigger
13. Nose
14. Quick Clear™ Lever
15. Feed Chute

## LOADING THE TOOL

*FOR USE WITH 7/8", 1-1/4", or 1-1/2" STINGER STAPLEPAC® CAP STAPLES ONLY*



- Disconnect air. Open the Magazine Cover by pushing the green Cover Release Tab and lifting.



- Place cap reel in Magazine. Make sure the front end of the cap coil is placed over the cap guide area of the Magazine. Insert lead cap into the Feed Chute.



- Slide caps along the Feed Chute with fingers until they engage the Cap Feeder. Pull the Cap Feeder back and release to advance caps until the first cap is under the Nose of the tool.



- Close the Magazine Cover.



- Pull back the Staple Follower until the Latch catches.



- Place staples in Staple Track.



- Release the Catch Button. Plug into air source. Tool is ready to use.



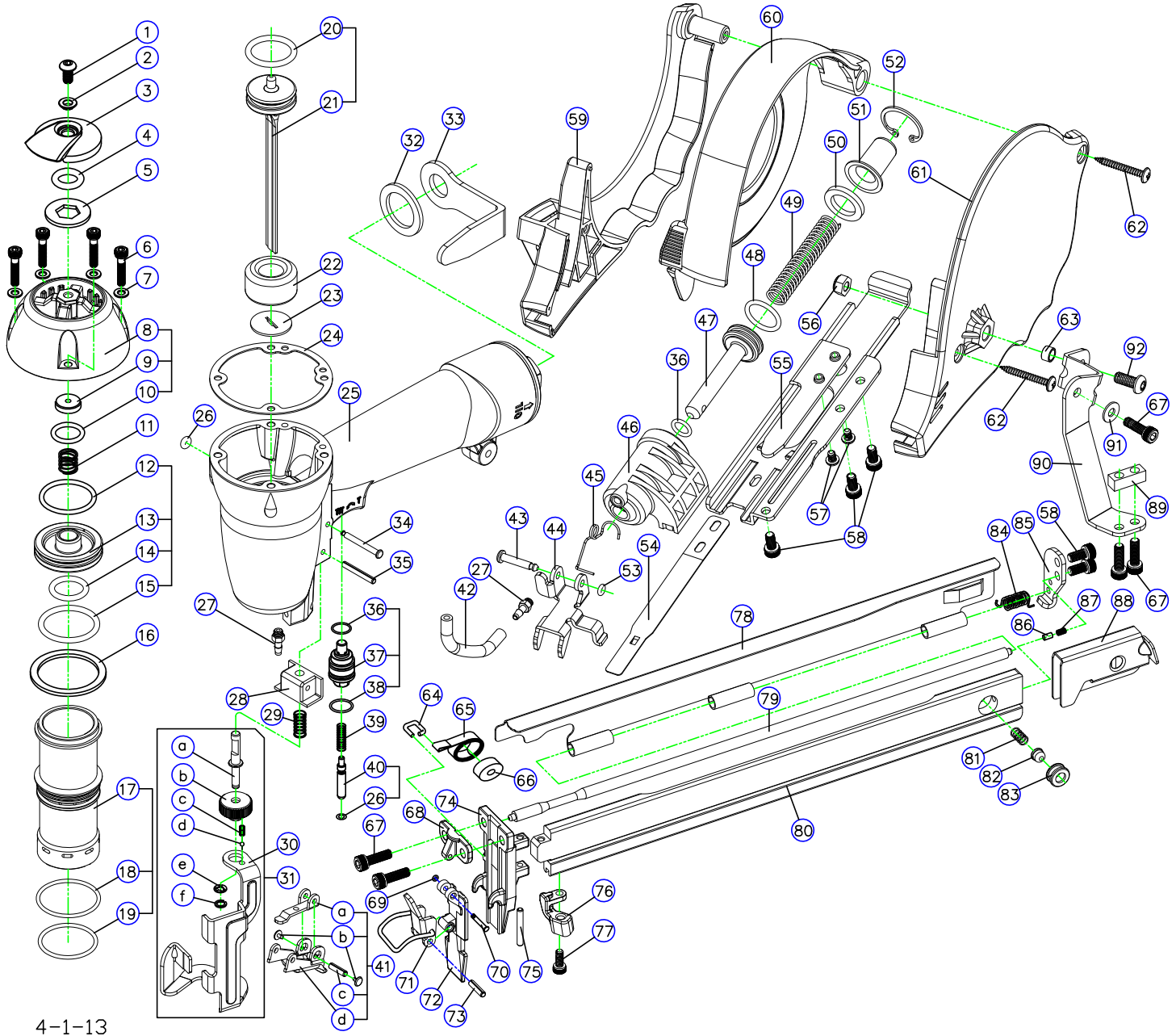
## OPERATING THE TOOL

1. Do not use tool prior to reading the **STINGER CS150** Owner's Manual.
2. Read warning label(s) on the tool.
3. Visually inspect the tool for worn or damaged parts.
4. Wear appropriate eye and ear protection.
5. Install a male pneumatic fitting into the End Cap of the tool, ensuring that the fitting allows the tool to exhaust any air in the tool when the air hose is disconnected.
6. Add 2 drops of non-detergent, 20-weight oil into the male fitting daily.
7. Connect the air hose to the tool using a quick connect fitting, and check the air pressure reading on the regulator to ensure it does not exceed 105 PSI. Check the tool for any air leaks.
8. Place the tool, empty of fasteners, in operating position on a scrap work piece. Fully depress the Safety and pull the Trigger to verify that the tool cycles.
9. Disconnect the air hose from the tool when:
  - Loading staples and/or caps
  - Performing inspection, maintenance or repair
  - Clearing a staple or collated cap jam
  - The tool is not in use
  - Leaving the work area
  - Moving the tool to another work location
  - Handing the **STINGER CS150** to another person
  - Storing the tool
10. Following recommended loading instructions, load the fasteners approved for use in the tool. See Page 6.

## OPERATING THE TOOL

11. Cycle the tool on a scrap work piece to evaluate the depth of penetration by the fastener into the work piece.
12. To adjust the depth of penetration, regulate the air pressure at the regulator and/or disconnect the air hose, adjust the depth control screw, connect the air hose, and cycle the tool on a scrap work piece to evaluate the adjustment.
13. Repeat Step 12 as needed to set the correct depth, using the minimum amount of air pressure to drive the fastener.

# STINGER CS150 SCHEMATIC



4-1-13

## STINGER CS150 PARTS LIST

Ref No.	Item No.	Description	Ref No.	Item No.	Description		
	01	0136665	SCREW	*	48	0135913	O-RING
	02	0135851	WASHER		49	0135914	SPRING
	03	0135951	EXHAUST DEFLECTOR	*	50	0135915	PISTON STOP
*	04	0137973	O-RING		51	0135916	FEED PISTON COVER
	05	0135854	WASHER		52	0135917	RETAINING RING
	06	0137953	CAP SCREW (4)	*	53	0137986	O-RING
	07	0135856	FLAT WASHER (4)		54	0135918	HOLD DOWN SPRING
	08	0137899	CAP		55	0135927	FEED CHUTE
*	09	0136627	EXHAUST SEAL		56	0137957	LOCK NUT
*	10	0136628	O-RING		57	0135926	SCREW (2)
	11	0136630	POPPET SPRING		58	0136608	SCREW (5)
*	12	0136643	POPPET O-RING		59	0135919	MAGAZINE RIGHT
	13	0136642	POPPET		60	0135927	MAGAZINE COVER
*	14	0137976	PISTON STOP O-RING		61	0135921	MAGAZINE LEFT
*	15	0137979	CYLINDER SEAL O-RING		62	0135922	SCREW (2)
	16	0553031	GUIDE SPACER		63	0135923	NUT
	17	0136675	CYLINDER		64	0136672	SPRING CLIP
*	18	0137969	CYLINDER O-RING		65	0136631	NEGATOR SPRING
*	19	0553029	CYLINDER O-RING		66	0136673	NEGATOR SPRING DRUM
*	20	0136615	PISTON O-RING		67	0136648	SCREW (5)
	21	0137898	PISTON & DRIVER ASSEMBLY		68	0135892	STATIC FRONT PLATE
*	22	0553001	BUMPER	*	69	0135893	O-RING
	23	0136657	RETURN SEAL		70	0136654	STEP PIN
*	24	0137966	GASKET		71	0136624	LATCH ASSEMBLY
	25	0137897	BODY		72	0136637	REMOVABLE FRONT PLATE
*	26	0136621	O-RING (2)		73	0136652	PIN
	27	0136645	BARB FITTING (2)		74	0136656	WEAR PLATE
	28	0135897	SAFETY GUIDE		75	0136653	PIN
	29	0136658	SPRINT		76	0137892	FEED CHUTE BASKET
	30	0137896	SAFETY		77	0136660	SCREW
	31	0137895	SAFETY ASSEMBLY		78	0137891	MAGAZINE COVER
	32	0135947	WASHER		79	0137890	COVER ROD
	33	0135948	BELT CLIP		80	0137889	MAGAZINE
	34	0136623	TRIGGER PIN		81	0135885	SPRING
	35	0136653	PIN		82	0137888	BUTTON
*	36	0135911	O-RING (2)		83	0137887	HOUSING
	37	0136640	BLEEDER VALVE		84	0136659	SPRING
*	38	0136676	O-RING		85	0136651	FIXED SPACER
	39	0136622	SPRING		86	0136644	PLUG
	40	0136620	PLUNGER		87	0136639	SPRING
	41	0136650	TRIGGER ASSEMBLY		88	0137886	PUSHER
	42	0137894	TUBING		89	0136649	SPACER
	43	0135907	PIN		90	0137885	BRACKET
	44	0137893	CAP FEEDER		91	0136611	WASHER
	45	0137911	SPRING		92	0135924	SCREW
	46	0135910	FEED CYLINDER	**	0137905	O-RING AND SEAL KIT	
	47	0135912	FEED PISTON				

\* Parts included in 0137905 O-Ring and Seal Kit

## MAINTANANCE & STORAGE

### MAINTENANCE

1. Disconnect the air hose from the tool when performing inspections, maintenance or repairs.
2. Use air line lubricators. If lubricators are not available, or if hose length exceeds 10 feet, add 2 drops of non-detergent 20-weight oil daily into the air inlet of the tool.
3. Whenever repairs or replacement of parts inside the body occur, check the piston “O” ring for adequate grease lubrication.
4. Never use any parts other than genuine **STINGER** replacement parts. To order, call 800-746-5659.
5. Periodically clean the Magazine and Nose of the tool with a mild solvent.

### STORAGE

1. Disconnect the air hose when storing the tool.
2. Never store the tool in cold weather environments for any duration of time as any frost or ice formation in the tool will cause tool failures.
3. For prolonged storage, add 2 drops of oil to the air inlet of the tool prior to discontinuing use. Also clean the exterior of the tool with a mild solvent.

## WARRANTY

### WARRANTY ITEMS

1. Warranty for cap assemblies, castings and housing castings is one year.
2. Warranty for bumpers, “O” rings, driver blades and piston rings is not applicable as they are normal wearing parts whose life is dependent on application.
3. Warranty for all other parts is 90 days.

### WARRANTY CONDITIONS

1. The beginning date in which the warranty is in force is the date of purchase.
2. The warranty is not transferable.
3. The warranty is voided by any of the following:
  - a. Abuse, misuse, or damage to the tool
  - b. Use of parts other than genuine **STINGER** parts
  - c. Use of fasteners not designated for use in the tool
  - d. Modifications to the tool that alter the original function or intent of use of the tool by anyone other than National Nail
4. National Nail Corp. retains the right to replace or repair any warranty items it deems necessary.

## TROUBLESHOOTING

*Disconnect the air hose from the tool when performing inspections, maintenance or repairs.*

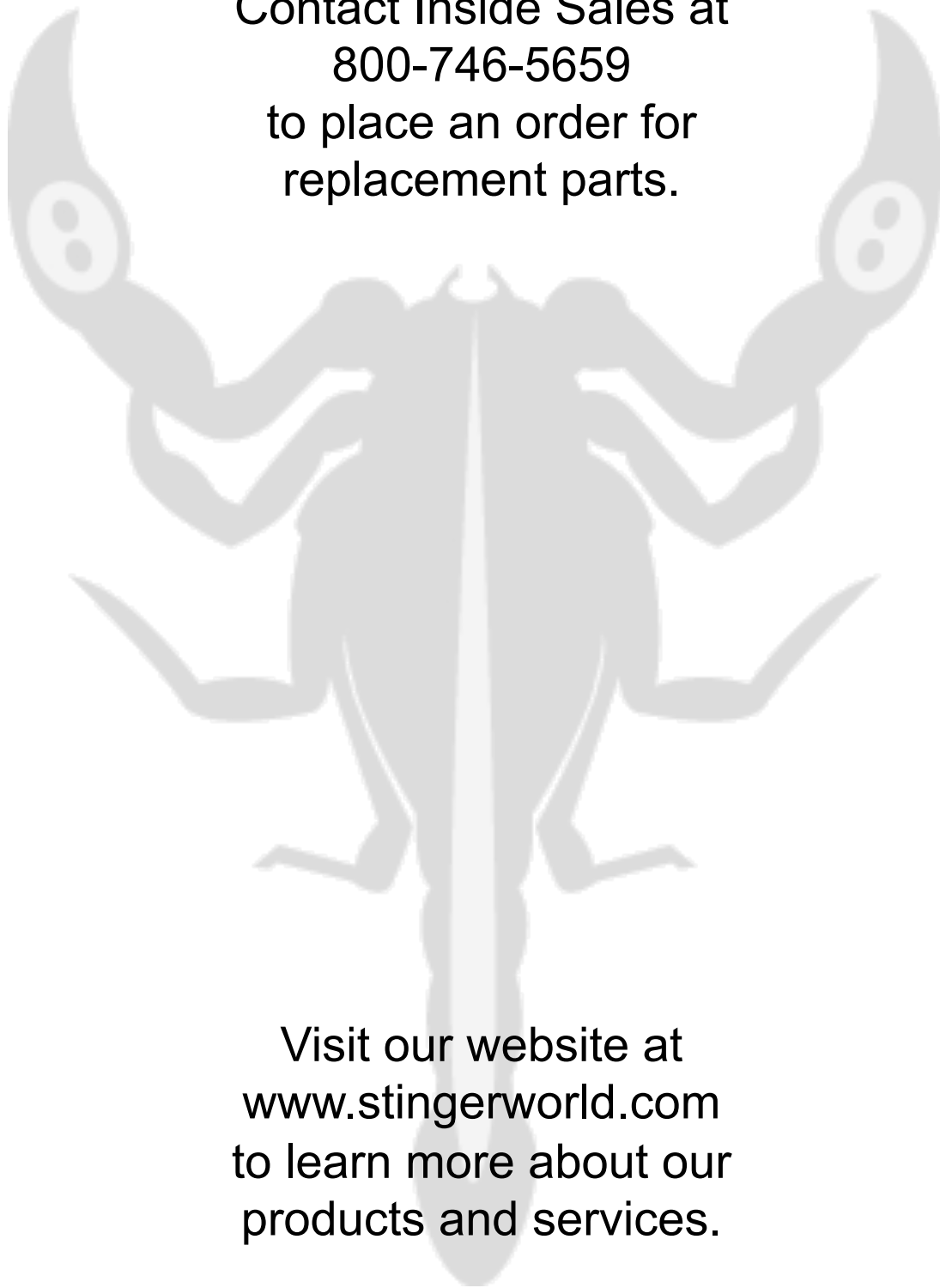
### PROBLEM:

### CORRECTION:

- |   |   |
|---|---|
| 1. Tool operates, but no fasteners are driven.          | <ul style="list-style-type: none"><li>• Check Magazine for proper fasteners. Fasteners should slide freely in and out of the magazine.</li></ul>  |
| 2. Cap leaks air.                                       | <ul style="list-style-type: none"><li>• Tighten cap screws.</li></ul>   |
| 3. Fasteners jam in nose of tool.                       | <ul style="list-style-type: none"><li>• Remove fasteners from Magazine.</li><li>• Open Quick-Clear™ Lever (if applicable), remove jammed fastener and close Latch.</li><li>• Load tool.</li></ul>                         |
| 4. Weak drive.  | <ul style="list-style-type: none"><li>• Check to make sure there is adequate air supply.</li></ul>  |
| 5. Skipping fasteners.                                  | <ul style="list-style-type: none"><li>• Replace Bumper if worn.</li><li>• Use only recommended fastener sizes.</li><li>• Replace Magazine if worn.</li><li>• Check air supply as it may be too low or too high.</li></ul> |
| 6. Fasteners will not drive completely into work piece. | <ul style="list-style-type: none"><li>• Adjust the depth of drive.</li></ul>  |

*Please contact Inside Sales for technical support if you have any other problems: 800-746-5659*

Contact Inside Sales at  
800-746-5659  
to place an order for  
replacement parts.



Visit our website at  
[www.stingerworld.com](http://www.stingerworld.com)  
to learn more about our  
products and services.

**NN**  
**national nail corp.**  
*more than just nails*

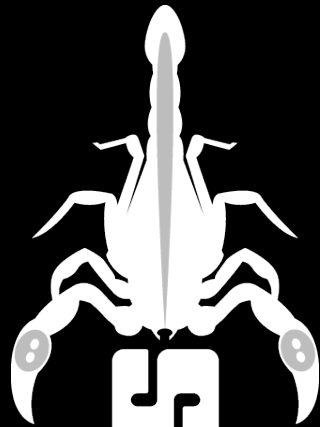
2964 Clydon SW, Grand Rapids MI 49519, USA

Phone: 800-968-6245 Fax: 616-531-5970

[www.nationalnail.com](http://www.nationalnail.com)

REV 06/15

[www.stingerworld.com](http://www.stingerworld.com)



**STINGER**  
JUST CAP IT.<sup>®</sup>