

U.S. SAWS

Core EZ



Operating Manual

Toll Free 1-866-987-7297

3702 West Central Avenue
Santa Ana, CA 92704

11 High Street
Suffield, CT 06078
www.ussaws.com

8004B East Broadway Avenue
Tampa, FL 33619

U.S. SAWS

Introduction

This manual outlines the maintenance and operation of the Core EZ.

This is a professional tool and is intended for use by trained and experienced operators.

To get maximum benefit from your tool and to ensure maximum safety, be sure to read this manual thoroughly. You should also periodically review safety instructions.

If you have any questions regarding this tool, please call our customer service department at (866) 987-7297

Specifications

Part Number	US28000
Capacity	3"-10" Core Bits
Electrical Requirements	120V (minimum 15 Amps)
Motor	W24-230 9" Metabo Grinder
Dimensions	24"x 17"x 11"
Weight	65 Lbs.

Table of Contents

Symbols & Labels	3
Safety	4
Set-Up	5
Operation	6
Disassembly	9
Parts	10
Accessories	12

Symbols & Labels

THE FOLLOWING SYMBOLS AND DEFINITIONS ARE FOUND THROUGHOUT THIS MANUAL AND ARE DESIGNED TO MAKE YOU AWARE OF POTENTIAL HAZARDS OR UNSAFE PRACTICES.



A potentially hazardous situation exists which, if not avoided, could result in death or serious injury.

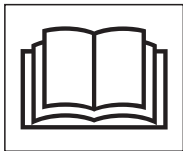


A potentially hazardous situation exists which, if not avoided, may result in minor or moderate injury or property damage.



A potentially hazardous situation exists which, if not avoided, may result in product or property damage.

THE FOLLOWING SYMBOLS & LABELS MAY BE FOUND IN THIS MANUAL OR ON THE TOOL.



Read the operator's manual carefully and understand the contents before you use this equipment.



Always wear a protective helmet



Always wear hearing protection



Always wear protective glasses or full face protection



Always use ground fault protection

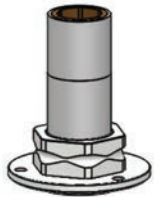
Safety

General Safety Precautions

- Do not operate machine unless you have read the operations and maintenance manual carefully. Read any additional instructions included from other manufacturers and organizations such as Honda and the Masonry and Concrete Saw Manufacturers Institute. Learn the applications and limitations as well as the specific potential hazards related to this tool.
- Do not operate this machine unless you have received operational and maintenance training from a US SAWS representative or from an authorized distributor for US SAWS.
- Observe all applicable local, state, and federal safety regulations. Wear OSHA approved foot protection.
- Observe all applicable local, state, and federal safety regulations. Wear OSHA approved safety glasses.
- Breathable silica may be generated by use of this product. Silica can cause severe and permanent lung damage, cancer, and other serious diseases. Do not breathe the dust. Do not rely on your sign or smell to determine if the dust is in the air. Silica may be in the air without a visible dust cloud. If air monitoring equipment for silica is not provided by your employer at your work site, you **MUST** wear appropriate respiratory protection when using or servicing the machine. Consult your employer and OSHA regarding the appropriate respiratory system.
- Observe all applicable local, state, and federal safety regulations. Wear OSHA approved hearing protection.
- Do not wear loose clothing or jewelry that can be caught in moving parts. Wear protective hair covering to contain long hair. Keep hair away from motor air vent. Rubber gloves and non-skid footwear are recommended when working outdoors.
- Do not expose machine to rain. Do not use machine in wet conditions. Keep work area well lit. When working at an elevated location, pay attention to articles and persons below.
- Do not operate machine while under the influence of drugs, alcohol or any medication.
- Do not operate machine with parts missing or improperly mounted.
- Check for alignment of moving parts, binding of moving parts, breakage of parts, mounting, and any other conditions that may affect machine operation. A guard, power switch, or other part that is damaged should be properly repaired or replaced by an authorized service center unless indicated elsewhere in this instruction manual. Do not operate machine if dead man lever or engine on/off switch does not function properly.
- Never touch moving parts such as blades, belts, and others.
- Stop using the machine immediately if any abnormalities are observed during operation. Examples of abnormalities include unusual noise or vibration.
- When replacing a component part with a new one, use only the same type and quality of new part. Never attempt to repair a machine if you are unfamiliar with proper procedures and techniques required.
- Do not modify machine from its original design without written permission from the manufacturer. Non-authorized modifications could lead to serious injury or death and void warranty.
- Refer to this operations and maintenance manual as well as any additional instructions included from other manufacturers and organizations such as Honda and Concrete Saw Manufacturers Institute. Never permit anyone to operate the machine without proper instruction.

Set-up

Contents



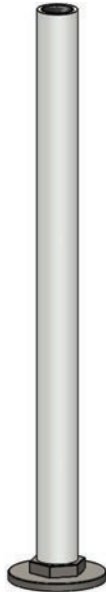
Hex Core Bit Adapter



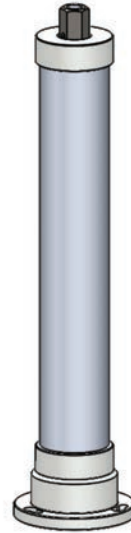
Grinder Coupling*

Grinder

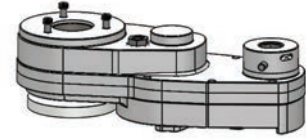
* Factory Installed



Guide Post



Water Feed Tube



Gearbox

Carry Case



Other Required Equipment



Water Supply



Core Bit



3/8" Masonry Drill Bit



Hammer Drill

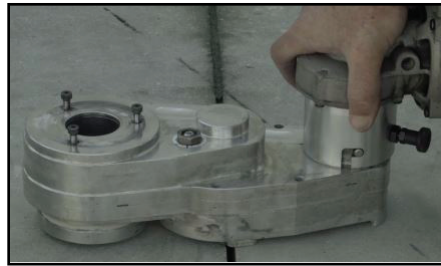
Assembly

Step 1



Mount hex core bit adapter to required size core bit.

Step 2



Install grinder onto gearbox. Ensure that the pin is fully rotated into the locked position

Step 3



Secure a water supply (i.e; water tank, water truck, garden hose).

Operation



WARNING



Always insure that the switch is in the “OFF” position before plugging the unit into electrical power.



CAUTION



Never leave the drill running unattended. Turn power off when not in use.

Step 1



Mark center of core.

Step 2



Drill anchor hole with 3/8” masonry bit a minimum of 5” deep, unless using toggle anchors.

Step 3



Set anchor pin.

Step 4



Remove nuts from anchor bolt.

Operation



WARNING



Never drill vertically upwards.

Step 5



Mount guide post.

Step 6



Adjusting anchor point.

IMPORTANT

Once the guide post is tight, push and pull on it several times by hand to stretch and seat the anchor into its tightest position, then, re-tighten the guide post. Repeat this complete procedure three times to ensure that the guide post is securely centered.

Step 7



Final tightening procedure should be performed with the supplied 1-1/2" wrench. In some cases the wrench should be lightly hammered to insure tightness.

Step 8



Be sure guide post is clean & lubricated before sliding core bit assembly into place on the guide post.

Operation



WARNING



Do not over reach, maintain control. Keep proper footing and balance at all times. Maintain a firm grip. Use extra care using the tool on ladders, roofs, scaffolds, etc.

Step 9



Slide gearbox and grinder over guide post, ensuring to engage the locking pin on hex drive.

Step 10



To mount water feed tube, slide it over the guide post and thread the feed nut while aligning the mounting plate bolts on the back of the gearbox.

Step 11



Turn on water.
Minimize water usage, do not flood the cut with water.
Typical water consumption should be under 1 gallon per minute.

Step 12



Hold down grinder trigger and turn advancing nut with a 3/4" wrench to core hole.

Disassembly



Do not over reach, maintain control. Keep proper footing and balance at all times. Maintain a firm grip. Use extra care using the tool on ladders, roofs, scaffolds, etc.

Step 1

Stop motor, unplug unit from power, and turn off water.

Step 2

Remove the core.

Based on job site conditions there are several ways to remove the core.

Vertical Drilling Floors



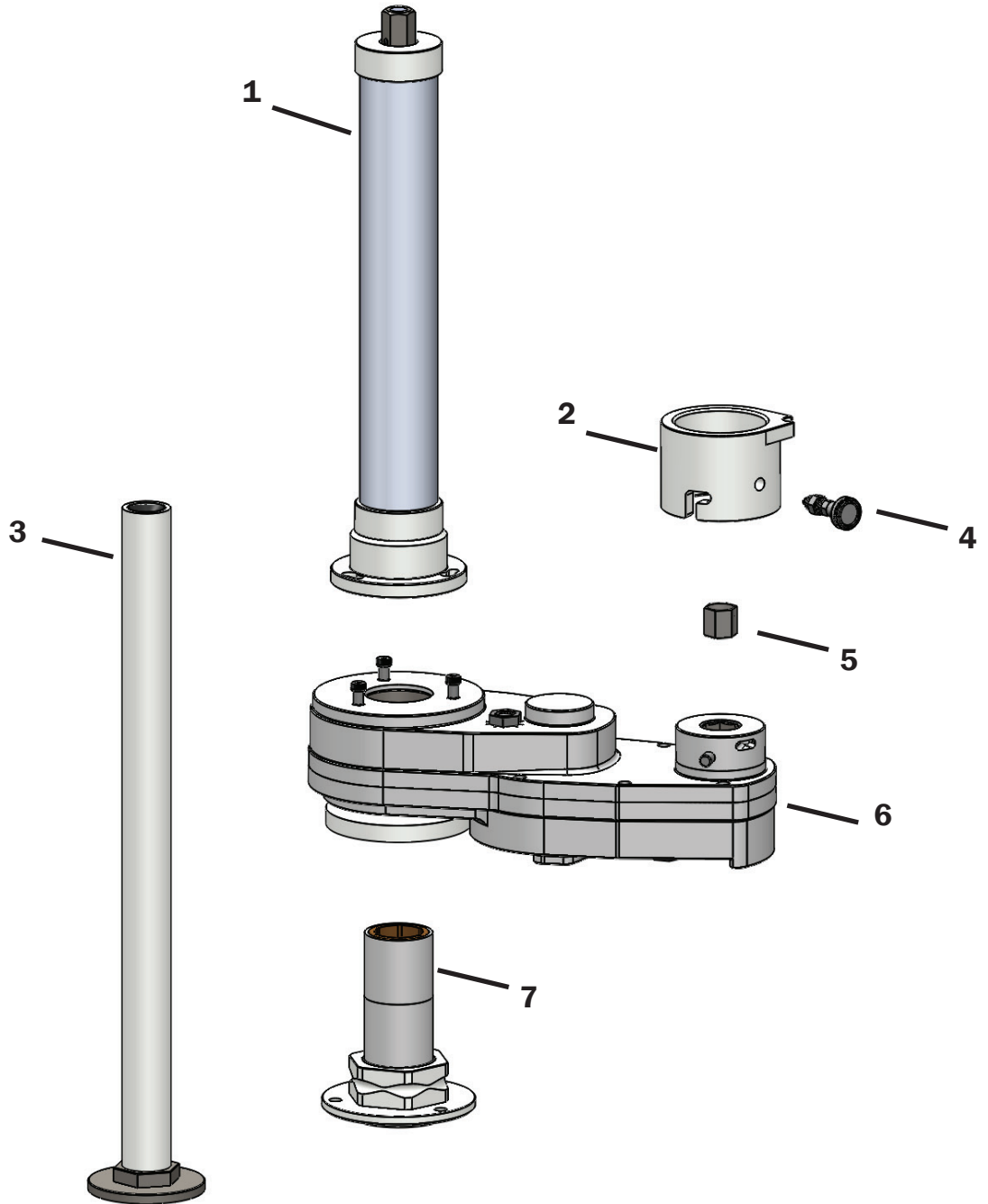
Horizontal Drilling Walls



- Remove the entire machine out of the drilling location (ex. cored hole) and place in a secure location for disassembly.
- Reverse feed nut, counterclockwise, to remove core bit and guide post.
- To remove core & anchor from guide post, strap chain wrench to core and apply opposite pressure with the 1 1/2" wrench to unthread the guide post.
- Unthread feed tube to remove the coring unit and leave the core and guide post in the hole.
- Re-stretch the anchor hole by pushing firmly on the guide post (similar to original tightening procedure).
- Unthread guide post.
- Remove core from hole.

Parts

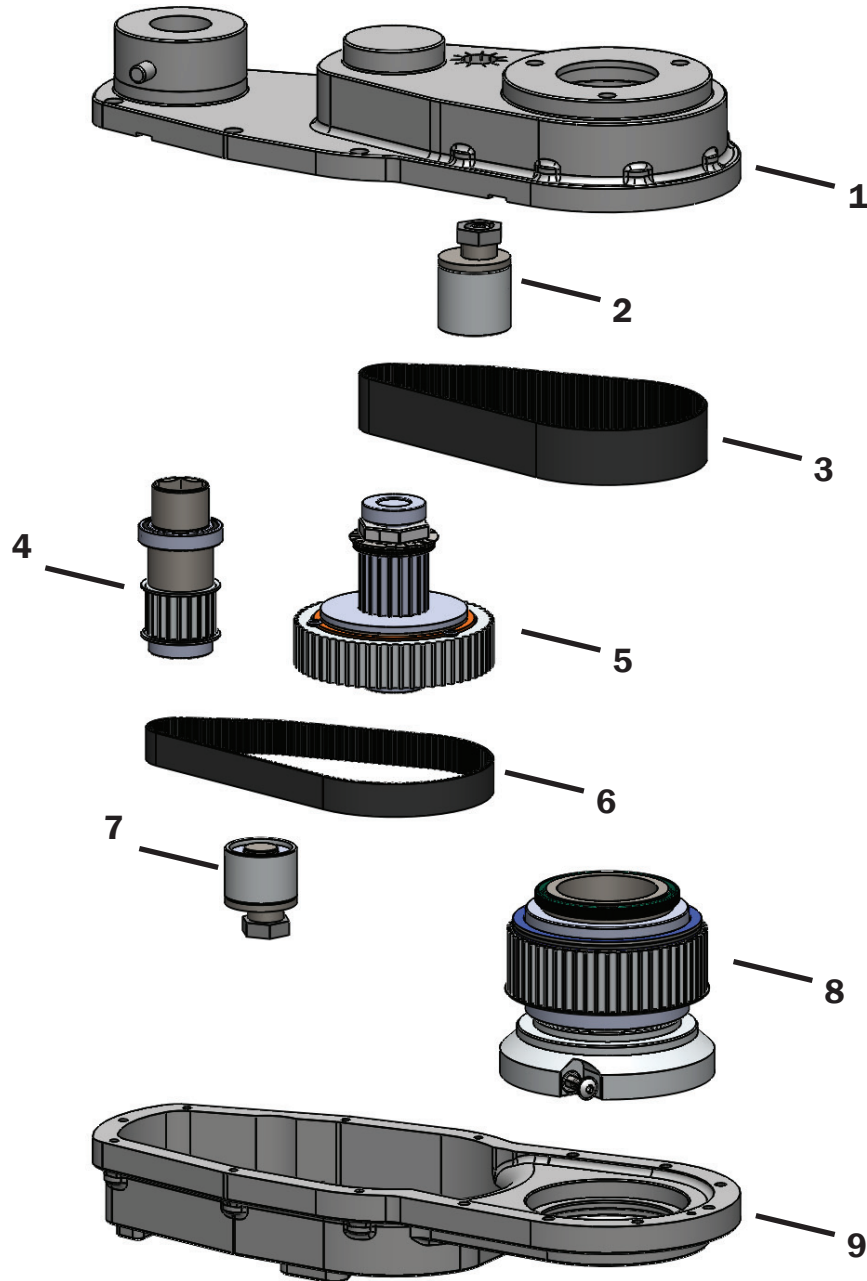
Core Mate



Number	Description	Part Number
1	Water Feed Tube	US28172
2	Grinder Coupler	US28591-8
3	Guide Post	US28152
4	Spring Locking Pin	US28191-8
5	Spindle Nut 5/8-11	US28191-6
6	Core Mate Gear Box	US28581
7	Hex Core Bit Adapter	US28161

Parts

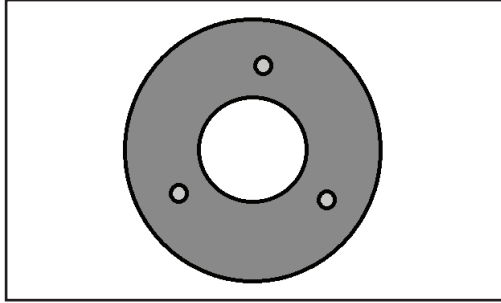
Gearbox



Number	Description	Part Number
1	Gearbox Top Housing	US28581-2
2	Reverse Idler Pulley (29 mm)	US28141-16
3	Polychain Belt 425-25	US28111-11
4	Input Shaft	US28111
5	Intermediate Shaft	US28121
6	Polychain Belt 425-15	US28131-16
7	Reverse Idler Pulley (20 mm)	US28141-15
8	Hex Output Shaft	US28131
9	Gearbox Bottom Housing	US28581-1

Accessories

Catch Flanges



Part No	Varies by size
Description	Flange set for use in vertical drilling applications to hold machine.

Water Tank



Part No	US27810-1
Description	3.5 gallon manual water pump

Angle Drilling Washer



Part No	US28273
Description	Special washers for drilling at an angle.

Chain Wrench



Part No	US60410-2
Description	Chain wrench



Description	Part Number	Price
3" x .165 Core Bit	CBB0300M	
4" x .165 Core Bit	CBB0400M	
5" x .165 Core Bit	CBB0500M	
6" x .165 Core Bit	CBB0600M	
7" x .165 Core Bit	CBB0700M	
8" x .165 Core Bit	CBB0800M	
10" x .165 Core Bit	CBB1000M	