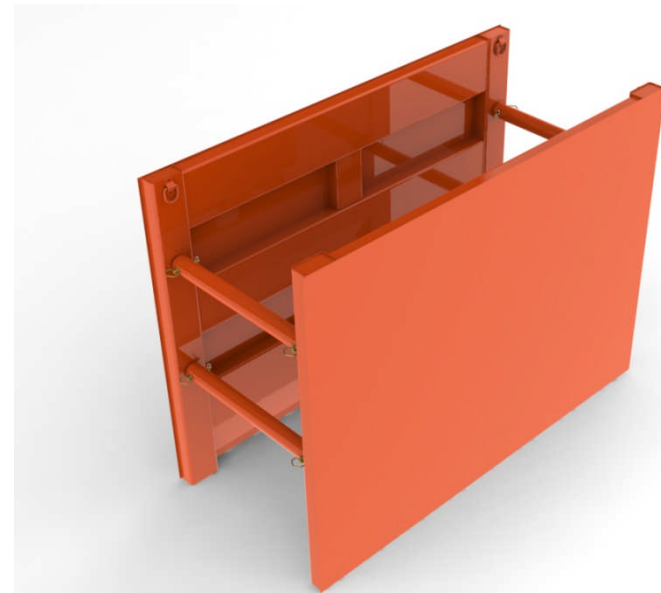
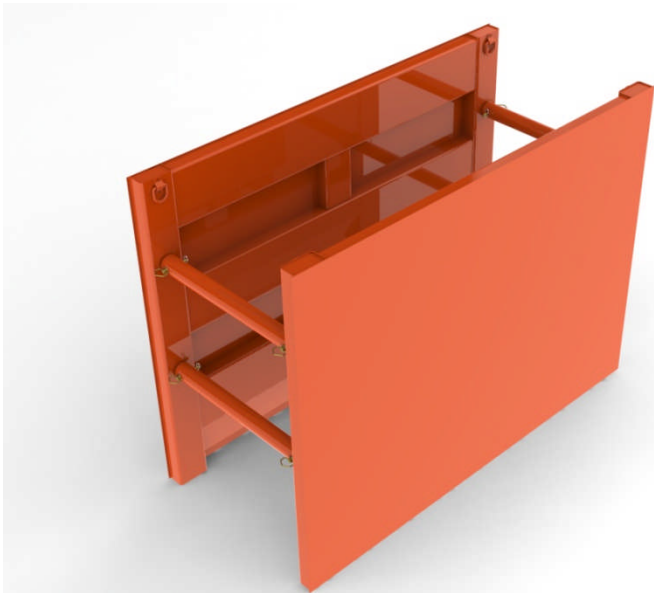


Maximize Your Box Potential

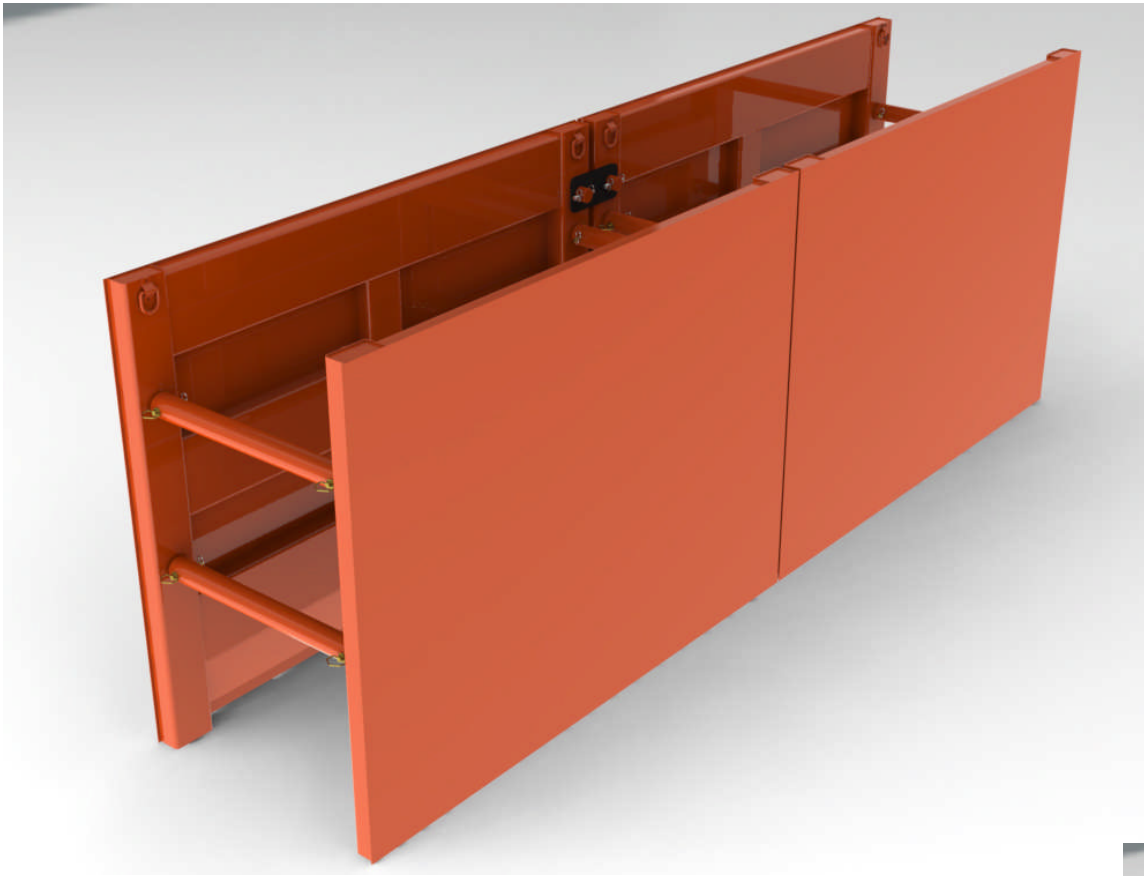
***Utilizing
Kundel's
Basic 3***



Most large construction companies should have a wide variety of boxes in their fleet for different jobs. But for a small to medium size company, this is a way to open yourself up to take on the jobs you wouldn't normally be able to do.

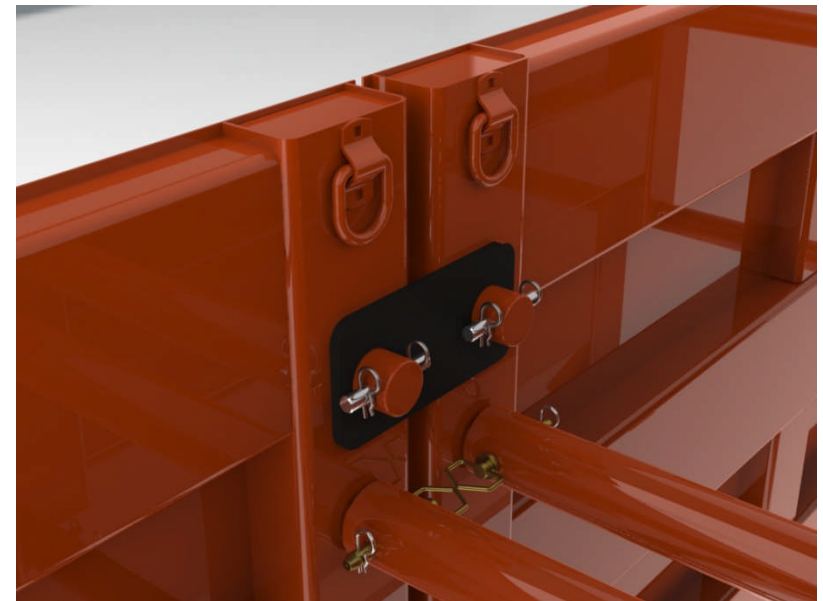
Obviously, you will have many more options by having 2 boxes. First of all, you can run 2 separate jobs at the same time utilizing them as light weight utility boxes. As you can see by the picture to the right; these boxes can be stacked giving you the ability to get the extra depth you need by using a simple stacking connector.



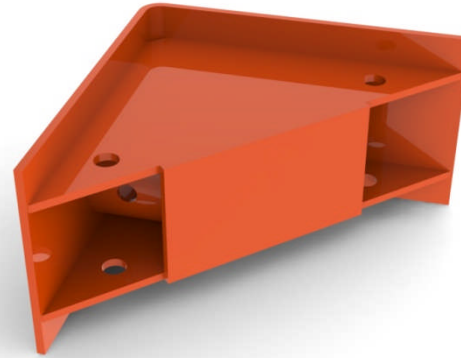


We even make a spreader system to raise the height of the spreaders inside, where the boxes are connected, which will provide easier installation of longer pipe

These boxes can also be run in tandem to increase the area of coverage; virtually making one 7.5'X16' box by using our Tandem Connectors which are shown to the right. This is perfect if you are trying to take the next step without having to buy a larger excavator.

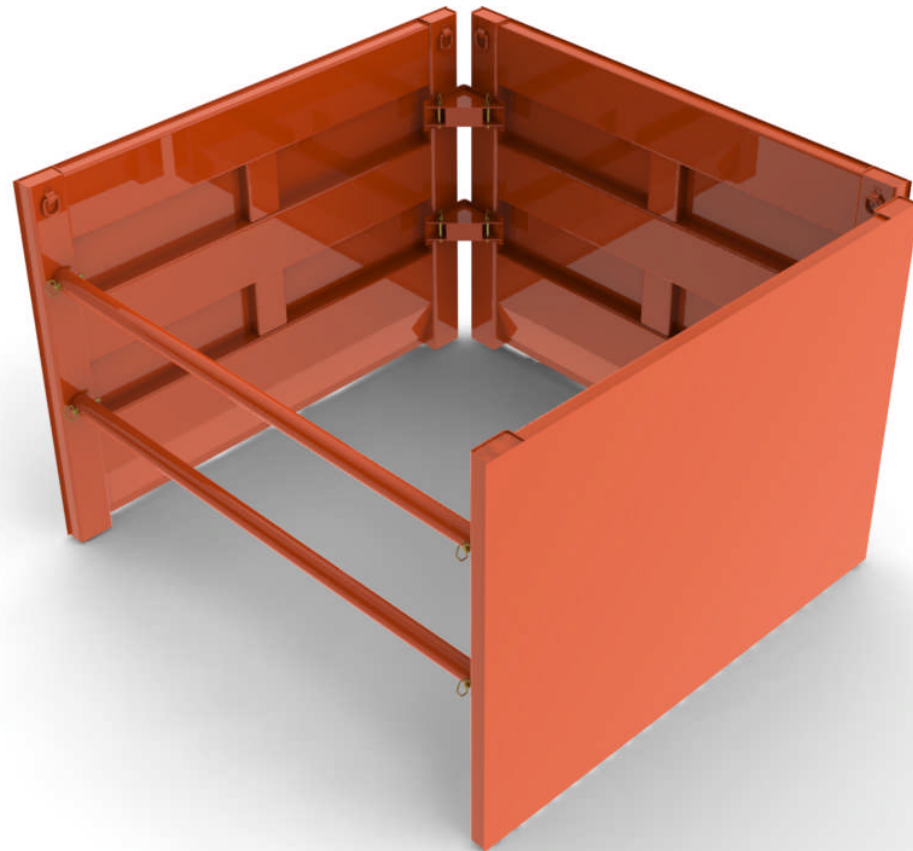


The Square or Corner Connectors really expand the purpose of these boxes to include small pits and manhole work.



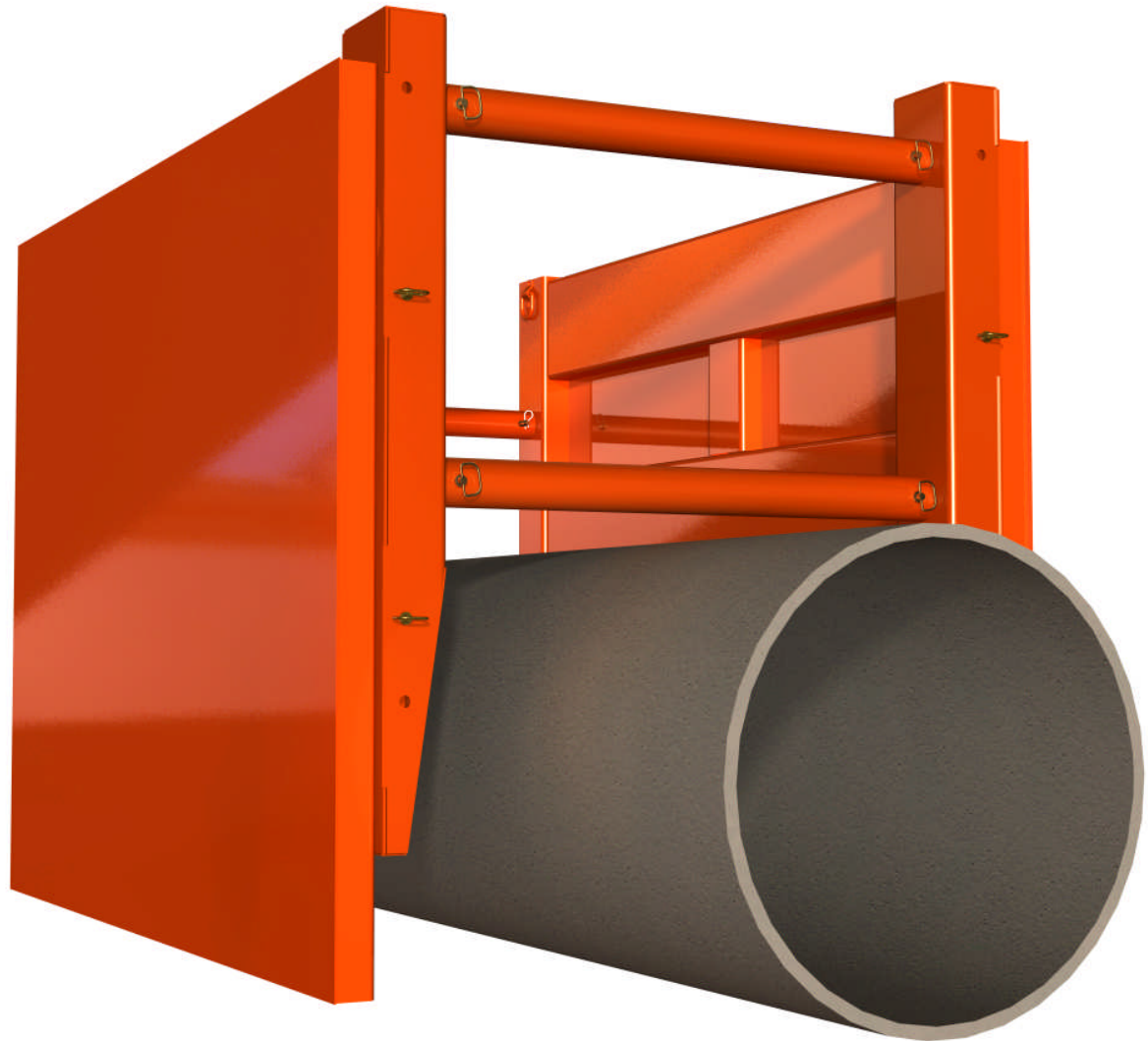
The spreaders can be totally eliminated by using the corner connectors, making a 3 or 4 sided box.

This is a great add-on if you already have 2 boxes. We manufacture corner connectors for almost all of our boxes.



Take a look at the newest addition to the Basic series...The Basic Big Clear! Now you have the ability to work on pipe up to 54" in diameter without having to upgrade your machine or buy a new box!

As you can see, the Basic is the most cost efficient and versatile steel box on the market! Especially when you combine all of the attributes and add-ons.



And last but not least, the Basic 3 can be shipped enclosed for minimal cost compared to shipping an standard 8'x8' or larger box sent by flatbed.

This makes the B3 very cost efficient for shipping and a lot easier to move from one jobsite to another once you have the box.

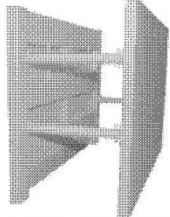


As you can see, the Basic 3 is an extremely lightweight box; in fact it is only slightly heavier than it's aluminum counterparts at a fraction of the cost. Depending on the size, some of the B3 models are capable of reaching depths up to 24' in C soil.

All of our Basic boxes are of a double wall, solid weld configuration, and come standard with the following features: Forged Steel Sockets, Steel Tamping Blocks, Steel Tamping Blocks, and Lifting Lugs giving you you the biggest bang for your buck!

THE BASIC 3

ALL STEEL TRENCH BOX



FEATURES

- Tamping Blocks
- Lifting Lugs
- Forged Spreader Pins
- Solid Welded

ACCESSORIES

- 12" X 12" Cut Out
- Stacking Rings
- Tandem Connectors
- Lite Sling
- Drop Ons

The *Basic 3* model is a series of shields for small excavators as well as rubber tired backhoes. Built with high standards to provide reliability in the field. This box is built tough and priced right. An excellent range of sizes is provided for the B3 model. This is a great model for Municipalities, Plumbers and Industrial maintenance Crews. Great shield for spot repairs, taps, minor mainline work.

Model	Weights & Price		Spreader Table	Ratings		
	Weight	Price		Depth Ratings		
Model - H x L Style	Weight	Price		A Soil	B Soil	C Soil
B3 - # X # - #	POUNDS			FEET		
B3 - 4' X 4' -ST	480		A	58"	32"	24"
B3 - 4' X 5' -ST	565		A	58"	32"	24"
B3 - 4' X 6' -ST	645		A	58"	32"	24"
B3 - 4' X 7' -ST	725		A	52"	30"	23"
B3 - 4' X 8' -ST	824		A	46"	26"	20"
B3 - 4' X 10' -ST	984		A	29"	17"	13"
B3 - 6' X 4' - K	675		A	58"	32"	24"
B3 - 6' X 5' - K	790		A	58"	32"	24"
B3 - 6' X 6' - K	900		A	58"	32"	24"
B3 - 6' X 7' - K	1040		A	53"	30"	23"
B3 - 6' X 8' - K	1155		A	47"	27"	21"
B3 - 6' X 10' - K	1386		A	30"	17"	14"
B3 - 7.5' X 8' - K	1395		A	47"	27"	21"
B3 - 7.5' X 10' - K	1695		A	30"	17"	14"

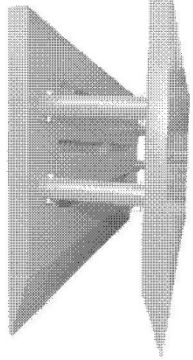
A Spreaders	
Length	Weight
18 in.	49 lb.
24 in.	64 lb.
30 in.	80 lb.
36 in.	95 lb.
42 in.	110 lb.
48 in.	125 lb.
54 in.	140 lb.
60 in.	155 lb.
66 in.	171 lb.
72 in.	186 lb.
96 in.	246 lb.
ADJ.	92 lb.
3" SPR SET OF 4	

Vertical Clearances	
Height (ft)	4' 6' 7.5'
Rear Pipe (in)	27 27 27
Front Pipe (in)	27 27 27

Horizontal Clearances	
Length (ft)	4' 5' 6' 7' 8' 10'
Front to Rear (in)	36" 48" 60" 72" 84" 108"

THE BASIC 5

ALL STEEL TRENCH BOX



FEATURES

- Tamping Blocks
- Lifting Lugs
- Forged Spreader Pins
- High Taper
- 3/8" X 3" Cutting Bar
- Solid Welded

ACCESSORIES

- Stacking Lugs & Plates
- Tandem Lugs & Plates
- Chain Slings
- Drop Ons

The *Basic 5* model is a series of shields for the small excavators. Built to work well in 12' length sewer line installations. The weight, durability and depth ratings for this model are ideal for any contractor. If you have a machine in the 6 metric ton to 19 metric ton class, this is a great shield for them to consider. This will definitely provide the protection needed while increasing main line sewer production.

Model	Weights & Price		Spreader Table	Standard		
	Weight			Depth Ratings		
Model - H x L Style	Weight			A Soil	B Soil	C Soil
B5 - # X # - #	POUNDS			STANDARD		
B3 - 5' X 12' - K	2195		C	38"	22"	17"
B3 - 5' X 14' - K	2472		C	38"	22"	17"
B3 - 5' X 16' - K	2793		C	31"	18"	14"
B3 - 7.5' X 12' - K	3095		C	38"	22"	17"
B3 - 7.5' X 14' - K	3450		C	38"	22"	17"
B3 - 7.5' X 16' - K	4295		C	38"	22"	17"

C Spreaders	
Length	Weight
18 in.	210 lb.
24 in.	267 lb.
30 in.	324 lb.
36 in.	381 lb.
42 in.	438 lb.
48 in.	496 lb.
54 in.	553 lb.
60 in.	610 lb.
72 in.	724 lb.
84 in.	838 lb.
96 in.	953 lb.
ADJ.	290 lb.
6" SPR SET OF 4	

Vertical Clearances	
Height (ft)	(14') (16')
Rear Pipe (in)	32 46 46
Front Pipe (in)	32 46 32

Horizontal Clearances	
Length (ft)	12' 14' 16'
Front to Rear (in)	124" 148" 160"

3/4" Pounding Pads	14"	14"	26"
--------------------	-----	-----	-----

***Call Travis with Kundel Industries
at (330) 259-9009 EXT. 119 for all
of your shoring needs!***

***Go Deep, Go Strong, Go
Kundel***

www.Kundel.com

