

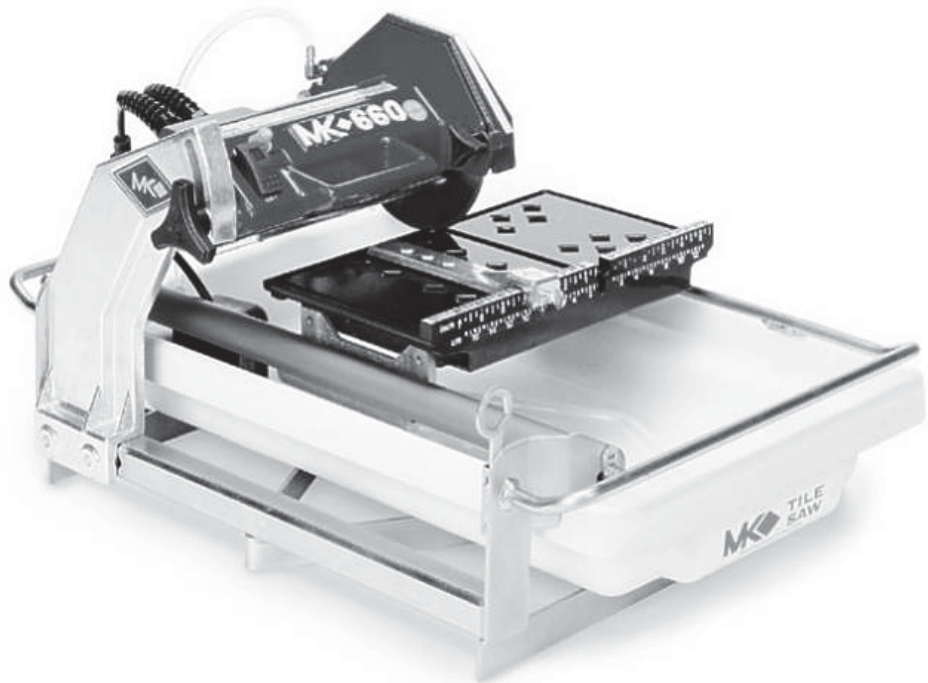


Click Here To View
Item at

www.GapPower.com

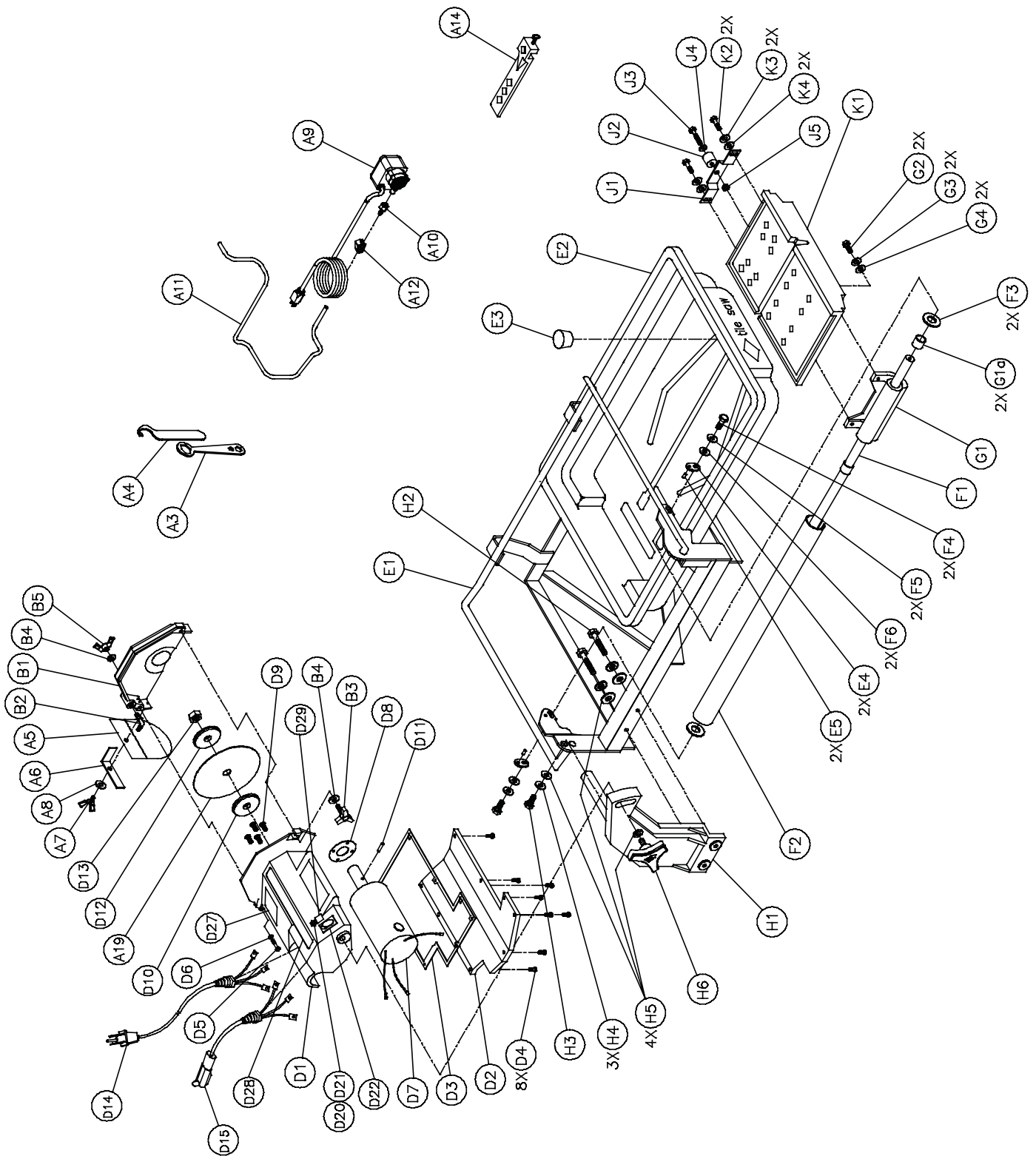
*Sales • Rentals
Parts & Service*

MK-660 TILE SAW OWNERS MANUAL PARTS LIST & OPERATING INSTRUCTIONS



Revision 101	09.2010
Manual Part# 153461	

Caution: Read all safety and operating instructions before using this equipment. This parts list **MUST** accompany the equipment at all times.



ITEM	DESCRIPTION	QTY	PART #
A	Accessories	1	n/a
A1	Carton, Accessory Pack, 660	1	153498
A3	Wrench, 15/16 Closed End	1	134684
A4	Wrench, Spanner, 660	1	154362
A5	Curtain, Splash	1	134841
A6	Bracket, Splash Curtain	1	152571
A7	Wing-screw, 1/4-20 x 1/2	1	151888
A8	Washer, 1/4 SAE Flat	1	151915
A9	Pump, Water, G-150A	1	151271
A10	Fitting, Plastic, 1/4 FNPT x 1/4 BARB	1	128397
A11	Hose, Vinyl, 1/4 ID	2'	132951
A12	Clamp, Flow, 1/4-1/2	1	154394
A13	Owner's Manual, Water Pump	1	155745
A14	Rip Guide	1	134551
	Screw, 1/4-20 x 3/4 Thumb	1	150991
A15	Large Bullnose Accessory	1	153201
	Screw, 1/4-20 x 3/4 Thumb	2	150991
A16	Owner's Manual, 660	1	153461
A19	Blade, 7 x 060 x 5/8, MK-100	1	153441
B	Blade Guard, 7", Assembly	1	154811-MK
B1	Guard, 7"Blade	1	151731
B2	Elbow, 1/8 MNPT x 1/4 BARB 90 Brass	1	154652
B3	Knob, Davies	1	151681
B4	Washer, 5/16 SAE Flat	2	151754
B5	Wing-nut, 5/16-18 Nylock	1	151746
D	Cutting Head (less blade guard)	1	n/a
D1	Cutting Head, 660	1	154291
D2	Cover, Cutting Head, 660	1	154293
D3	Gasket, Cover, 660	1	154381
D4	Screw, 10-24 x 5/8 Pan Head Phillips Self-Tapping Machine	8	153681
D5	Screw, 5/16-18 x 2 1/2 Hex Head Cap, Fully Threaded	1	151748
D6	Washer, 5/16 Split Lock	1	151747
D7	Motor, 3/4 HP 115V FWR, 660	1	154292
D7A	Motor, 3/4 HP 230V FWR, 660	1	153497
D8	Gasket, Thermal, 660	1	154346
D9	Screw, 10-24 x 5/8 Flat Head Phillips Machine	4	154295
D10	Flange, Inner, 660	1	154194
D11	Pin, 1/8 x 3/8 Spring	1	154982
D12	Flange, Outer	1	135830
D13	Nut, 5/8-18 UNF Hex	1	135848
D14	Cord, AC Power 120V (16/3 SJTW x 10', w/ molded 5-15P and Heyco 3251 Strain Relief)	1	153419
D15	Cord, Pump Pigtail, 16/3 SJTW x 1', w/ molded 5-15R and Heyco 3251 Strain Relief	1	154446
D16	Wire Harness, 660	1	153415
D17	Screw, 10-24 x 3/8 Pan Head Phillips Self-Tapping Machine	1	151262
D18	Resistor, 660	1	153535
D19	Tack, 1/4 Head	4	155659
D20	Switch, Thermal Overload, 660	1	167982

ITEM	DESCRIPTION	QTY	PART #
D21	Boot, Thermal Overload Switch	1	167983
D22	Switch, 15A\125V Lighted Rocker	1	153421
D23	Rectifier, 40 Amp	1	153677
D24	Screw, 10-24 x 3/4 Fillister Head Machine	1	151750
D25	Wire-nut, 3/#16 AWG (Blue)	1	155492
D26	Tag, 660 Serial Number	1	156561
D27	Label, Caution Strip	1	155214
D28	Label, When Motor Cools...	1	154409
E	Frame	1	n/a
E1	Frame	1	153322
E2	Pan, Plastic	1	151736
E3	Plug, Water Drain	1	153439
E4	Plate, Adjustment	2	151758
E5	Pin, Rolled	2	151783
F	Guide Bar, 5/8 Dia.	1	151739-MK
F1	Bar, Guide, 5/8 Dia.	1	151739
F2	Cover, Guide Bar	1	151740
F3	Spacer, 5/8 Guide Bar Cover	2	151755
F4	Screw, 5/16-18 x 1 Hex Head Cap	2	151743
F5	Washer, 5/16 Split Lock	2	151747
F6	Washer, 5/16 SAE Flat	2	151754
G	Linear Bearing	1	151737-MK
G1	Casting, Bearing, Linear	1	151737
G1a	Bearing, Multi-Lube	2	157126
G2	Screw, 5/16-18 x 1 Hex Head Cap	2	151743
G3	Washer, 5/16 Split Lock	2	151747
G4	Washer, 5/16 SAE Flat	2	151754
H	Post	1	n/a
H1	Post, Rear, 660	1	153451
	Shaft, 5/8 Pivot, 660	1	153452
H2	Screw, 3/8-16 x 2 Hex Head Cap	2	153485
H3	Screw, 3/8-16 x 1 Hex Head Cap	1	152507
H4	Washer, 3/8 Split Lock	3	150925
H5	Washer, 3/8 SAE Flat	4	150923
H6	Knob, 3/8-16 x 1-1/2 MK Adjustment	1	156770-02
J	Roller Wheel	1	151756
J1	Bracket, Roller Wheel	1	154021
J2	Wheel, Roller	1	151799
J3	Screw, 1/4-20 x 1 1/2 Hex Head Cap	1	151914
J4	Washer, 1/4 SAE Flat	1	151915
J5	Nut, 1/4-20 Hex	1	151893
K	Table, 660	1	n/a
K1	Table, 660	1	152680
K2	Screw, 5/16-18 x 1 Hex Head Cap	2	151743
K3	Washer, 5/16 Split Lock	2	151747
K4	Washer, 5/16 SAE Flat	2	151754

ITEM	NUMBER	DESCRIPTION	
1.	158434	MK-225, 7 x 5/8 Arbor	
2.	139311	MK-215, 7 x 5/8 Arbor	
3.	153293	MK-315, 7 x 5/8 Arbor	
4.	134577-MK	Dual 45° Flat Angle Guide	
5.	134569-MK	90° Protractor	
6.	152792	Dressing Stone	
7.	160488	Side Table	
8.	152601	Ground Fault circuit Interrupter	
9.	153201-MK	45° Miter	
10.	151889	Saw Stand	

ORDERING INFORMATION

You may order MK Diamond products through your local MK Diamond distributor or, you may order direct from MK Diamond.

NOTE: There is a \$25.00 minimum order when ordering direct from MK Diamond. All purchases must be made using VISA, MasterCard or American Express.

When ordering direct from MK Diamond, please have the following information ready before calling:

- The Model Number of the saw
- The Serial Number of the saw
- Where the saw was purchased and when
- The Part Number for the part(s) being ordered
- The Part Description for the part(s) being ordered

All parts may be ordered by calling toll free to – 800 421-5830 or 310 539-5221 and asking for Customer Service. For technical questions, call – 800 474-5594.

RETURN MATERIALS POLICY

To expedite the service relative to the return of a product purchased through MK Diamond, please observe the following:

NOTE: When returning all items, they must have been purchased within the previous twelve (12) months.

- Have the Model Number of the saw
- Have the Serial Number of the saw
- Have the location of where the saw was purchased
- Have the date when the saw was purchased
- Contact Customer Service for approval to return the item(s)
- Obtain a Returned Goods Number (RGA) authorizing the return
- Follow the packaging instructions in the following section
- Ensure your item(s) are prepaid to the destination

For returned items, call toll free to – 800 421-5830 or 310 539-5221 and ask for Customer Service. For technical questions, call – 800 474-5594 or 310 257-2845.

PACKAGING INSTRUCTIONS

- Remove the Blade guard and Support Angle Assembly
- Dry the saw before shipping
- When packing, include the following: MK-370EXP Saw, Diamond Blade, Blade guard and Support Angle Assembly and Adjustable Cutting Guide (Other Accessories are not required)
- Package the unit in its original container or one of comparable size (do not ship the unit partially exposed)
- Ensure all parts are secured in the packaging to prevent moving

AUTHORIZED SERVICE CENTERS

For quicker repair time, you may contact MK Diamond Customer Service, toll free, at 800 421-5830 or 310 539-5221 for the Authorized Service Center closest too you or visit our web site at www.mkdiamond.com. For technical questions, call – 800 474-5594.

MK-660 TILE SAW
OWNERS MANUAL, PARTS LIST
& OPERATING INSTRUCTIONS



MK Diamond Products, Inc.

MK Diamond Products, Inc.
1315 Storm Parkway
Torrance, CA 90501

Toll-Free: (800) 421-5830
Phone: (310) 539-5221
Fax: (310) 539-5158
www.mkdiamond.com