

Side-Winder

Retainer Clip & C-Clip Installation

Kit Contains:

- 1 pc. 10911 - C-clip
- 1 pc. 10539 - 1/4 x 1 1/4" lg. Faspin
- 1 pc. 10913 - Retainer Clip
- 1 pc. 10799 - 1/4-20 x 1.0" hex washer head screw

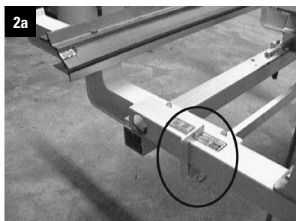
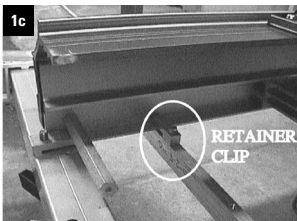
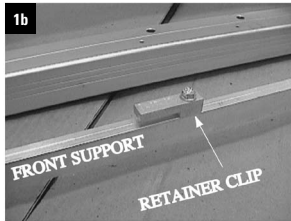
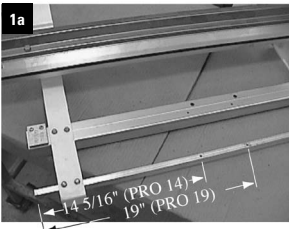
Tools Needed:

- 3/8" wrench

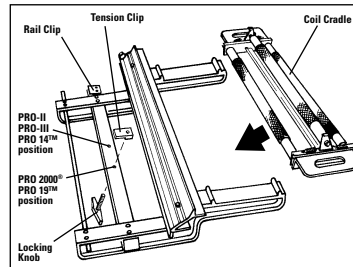
Remove the Sidewinder from the box.

Attach the Retainer Clip to the front support with the 1/4-20 x 1.0" hex washer head screw. Use proper hole as described in figure 1a. The hole will be 14 5/16" from the end if used on a PRO-14 series brake and 19.0" from the end if used on a PRO-19 series brake. The retainer clip must run parallel with the front support and point to the left. See figures 1a, 1b, and 1c below.

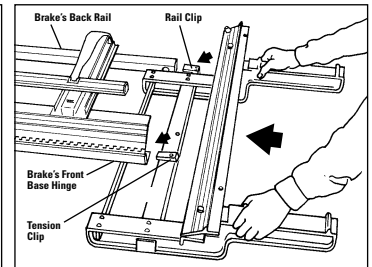
Install the Sidewinder back on the brake. Insert the C-clip in the front support and fix in place with the 1/4 x 1 1/4" lg. faspin. See Figure 2a at right.



Side-Winder™ Operating Instructions

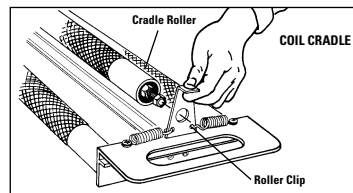


STEP 1
Set up is fast and easy. First, install Tension Clip with Locking Knob onto middle support rail in correct hole position for your brake. Do not tighten. See illustration above.

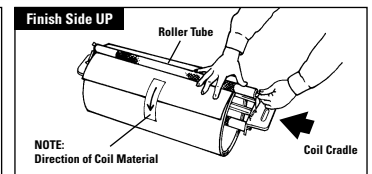


STEP 2
Attach Side-Winder to the brake by inserting Back Rail Clip into the brake's Back (Box) Rail and Tension Clip onto your brake's Front Base Hinge. Tighten Locking Knob.

Loading the Coil Cradle



STEP 3
Remove Cradle Roller from Coil Cradle by grasping and unhooking Roller Clips at each end. To load coil finish side **UP** see steps 4a & 4b. To load coil finish side **DOWN** see steps 5a, 5b & 5c.



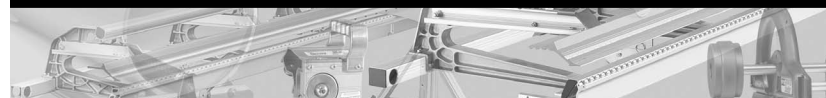
STEP 4a
To load coil finish side **UP**, insert Coil Cradle into center of coil then attach Cradle Roller to Coil Cradle over TOP of coil.



29797 Beck Road • Wixom, MI 48393-2834
phone: (800) 521-7567 • www.tapcotools.com

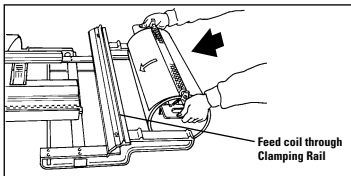
© Boral Building Products Inc.

Item #12053
T3280-C1 3/06

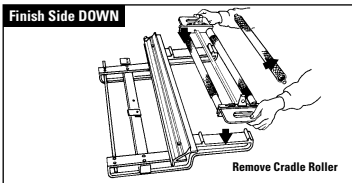


Side-Winder

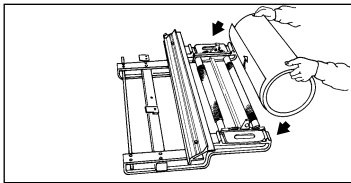
Coil Holder System™



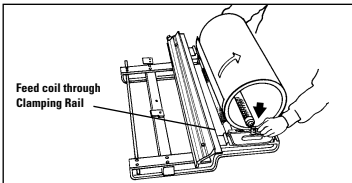
STEP 4b
Place entire assembly on Side-Winder.



STEP 5a
To load coil finish side DOWN, place Coil Cradle onto Side-Winder after removing Cradle Roller.

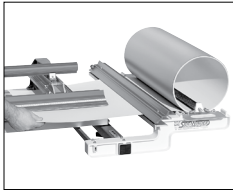


STEP 5b
Place coil on top of Coil Cradle (Note direction of coil material).



STEP 5c
Insert Cradle Roller through center of coil and attach to Roller Clips at each end of Cradle.

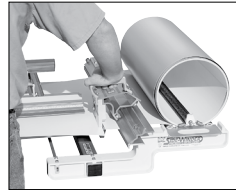
Attach the Side-Winder to a Brake



STEP 1
Draw coil through Side-Winder and into open jaws of your PRO Series Brake.



STEP 2
Dispense coil to your desired length along the length of your brake.

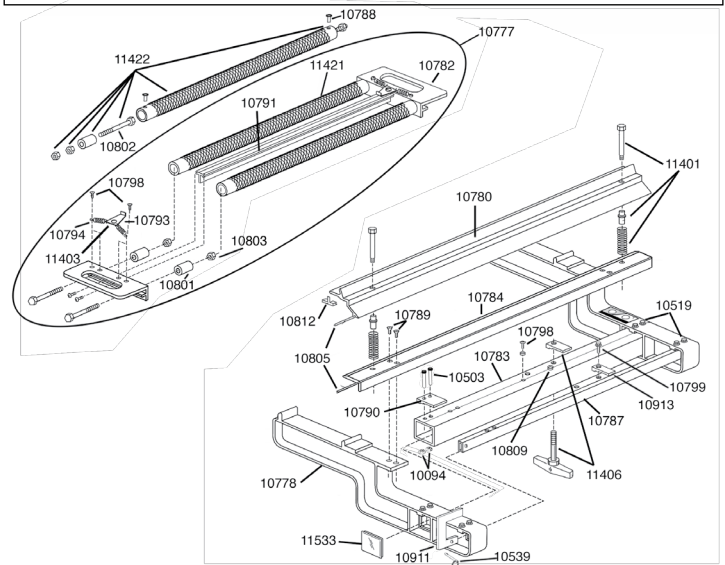


STEP 3
Leave the brake open, cut-off coil to length with PRO™ Cut-Off and you're ready to bend!

Just roll out, cut off and in seconds you're ready for bending!

Side-Winder

Parts Diagram



Item#	Description	Item#	Description	Item#	Description
10094	1/4"-20 Hex Flange Nut	10913	Retainer Clip	10782	Coil Carriage
10503	1/4"-20 X 2 1/2" Socket Cap Screw	11401	Roller Kit	10791	Cradle Rail
10519	1/4"-20 X 3/4" Hex Wash Hd Screw		(2) 5/16-18 x 1 1/4" Shoulder Bolt 10785	10798	10-24 x 3/4" Phil Pan Hd Screw
10539	1/4" X 1 1/4" Faspin		(2) Clamping Rail Bushing 10810	11421	Replacement Roller Cover Kit
10777	Coil Carriage		(2) Anvil Spring 10779		(3) Roller Covers 10796
10778	Side-winder Arm	11403	Carriage Roller and Spring Kit	11422	Roller Assembly Kit
10780	Clamping Rail		(2) Roller/Pivot Spring 10794		(1) Cradle Roller 10786
10783	Middle Support		(2) Clip 10793		(1) Roller Cover 10796
10784	Clamp Support	11406	Side-winder Knob and Clip Kit		(2) Roller Tube Insert 10801
10787	Front Support		(1) Tension Clip 10792		(3) Roller Tube Insert 10801
10788	1/8" Pop Rivet		(1) 5/16-18 x 2 Tee Handle Knob 10795		(4) 5/16-18 Nylok Hex Nut 10803
10789	#10 X 5/8 Phil Fl Hd	11533	Back Rail Clip		
10790	Rail Clip	12044	Side-winder Parts Bag		
10799	1/4"-20 x 1 1/4" Hex Washer Head Screw		10059 - 1/2" x 1 1/4" Hex Slotted Washr. HD Screw		
10801	Roller Tube Insert		10539 - 1/4" x 1 1/4" Faspin		
10803	Nut		10792 - Tension Clip		
10805	Top Clamp/Support Vinyl		10795 - 5/16-18 x 2 Tee Handle Knob		
10809	Nylon Spacer		10911 - C-Clip		
10812	Cut Off Stop		10913 - Retainer Clip		
10911	C-Clip				