



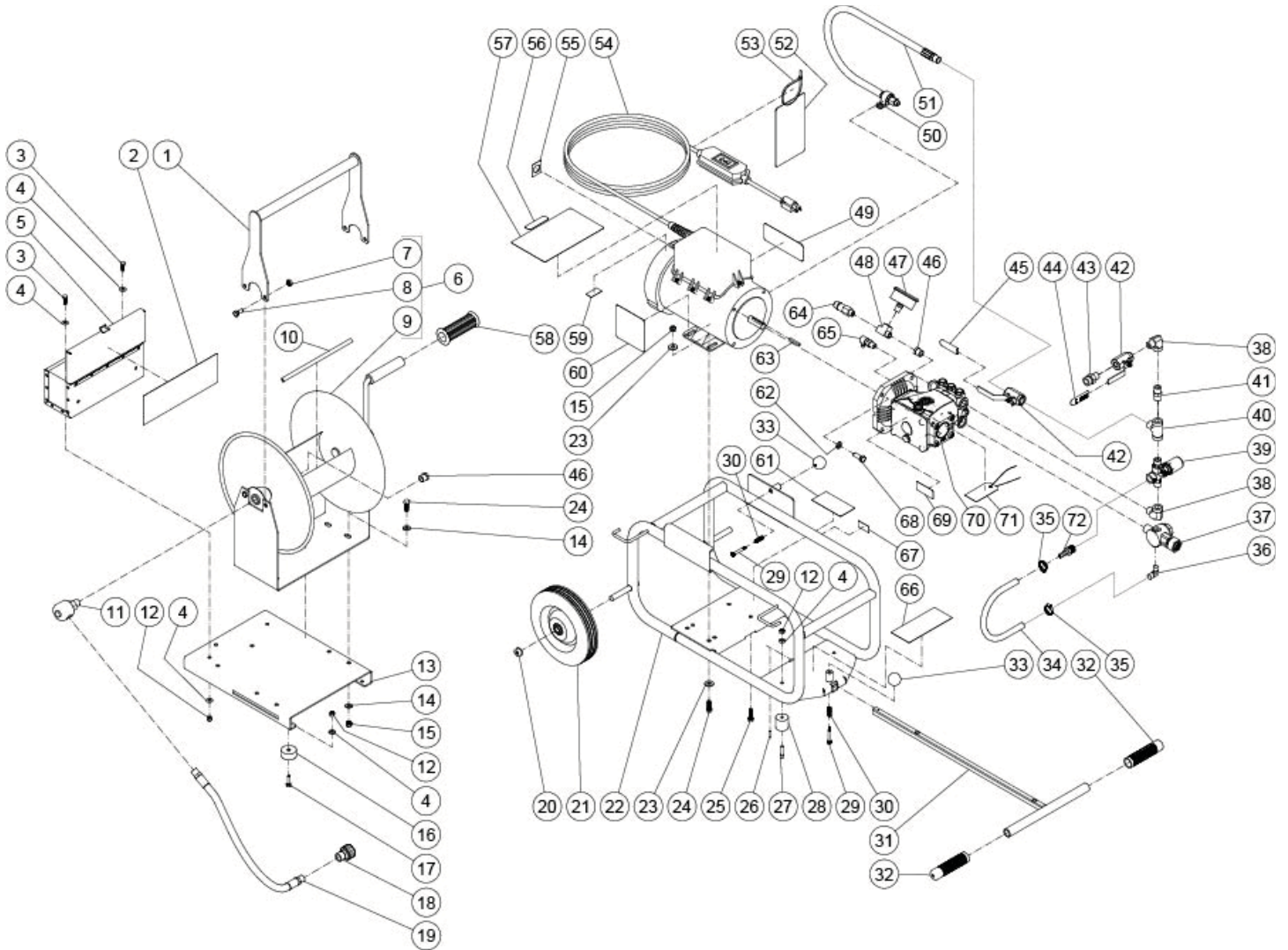
Click Here To View
Item at

www.GapPower.com

*Sales • Rentals
Parts & Service*

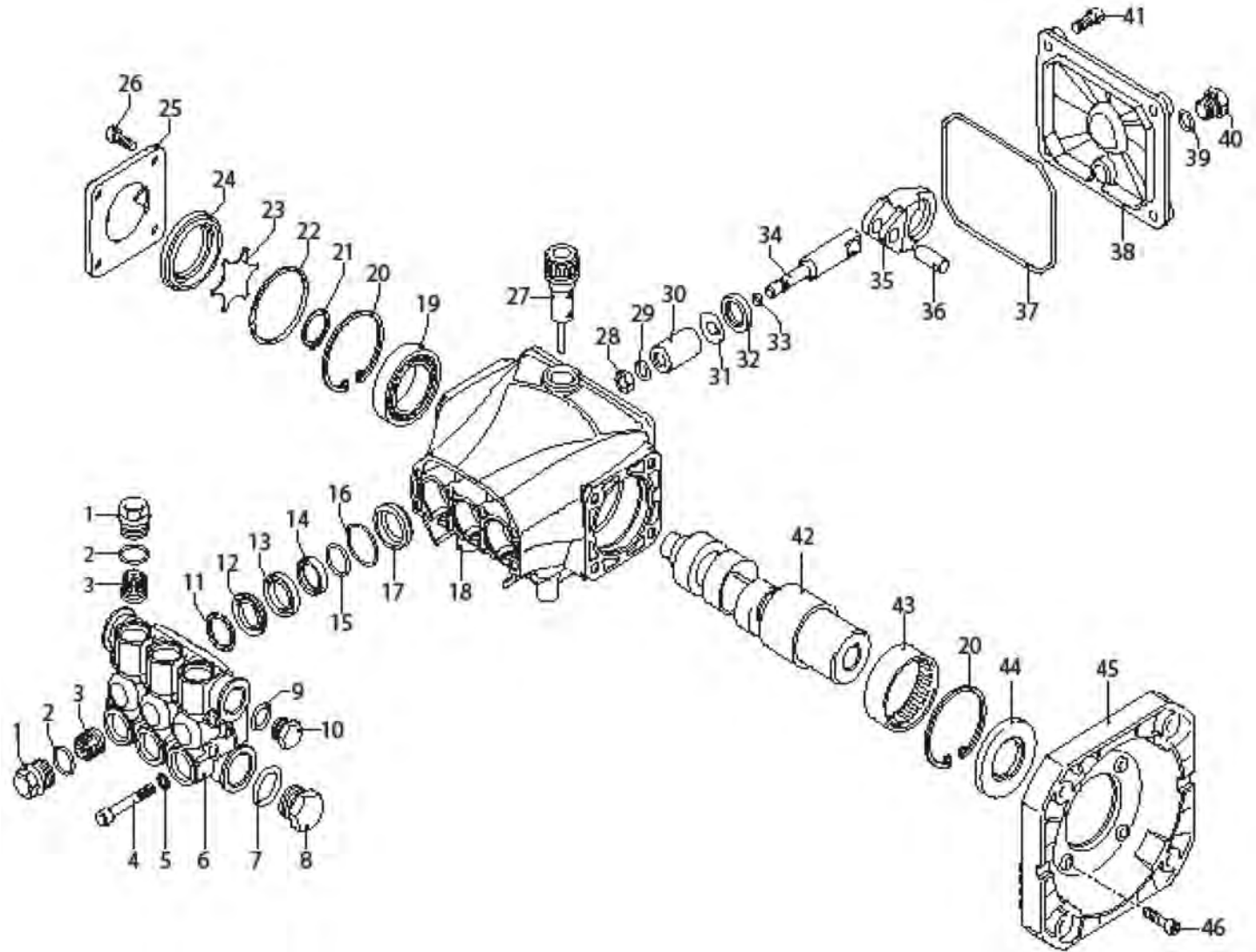
JM-1450 PARTS LIST

ITEM	DESCRIPTION	PART #	QTY	ITEM	DESCRIPTION	PART #	QTY
1	HOSE REEL HANDLE	JM7-0225A01	1	38	ELBOW	JM24-0105	2
2	DECAL - WARNING/OPERATION SEWER JET ELEC (SEE 71-0001)	N/A	1	39	UNLOADER	JM8-0627	1
3	BOLT	JM27-0015	2	40	TEE	JM24-0184	1
4	WASHER	JM28-0002	10	41	NIPPLE	JM24-0010	1
5	COMPONENT TOOL BOX	JM20-1213A64	1	42	BALL VALVE	JM22-0461	2
6	13" HOSE REEL ASSEMBLY	JM50-0191	1	43	SCREW NIPPLE	JM23-0493	1
7	NUT	-	1	44	HANDLE GRIP	JM7-0226	1
8	BOLT	-	1	45	HANDLE GRIP	JM7-0230	1
9	HOSE REEL	-	1	46	REDUCER	JM23-0017	2
10	EDGING *(ONE FOOT REQUIRED)	JM33-0020	1	47	PRESSURE GAUGE	JM22-0466	1
11	HOSE REEL SWIVEL	JM24-0335	1	48	TEE	JM23-0127	1
12	LOCKNUT	JM30-0155	8	49	DECAL - WARNING RISK OF INJECTION/ EXPLOSION (SEE 71-0001)	N/A	1
13	HOSE REEL MOUNTING PLATE	JM20-1218A01	1	50	CLIP	JM33-0291	1
14	WASHER	JM28-0003	8	51	HOSE - 24" LONG	JM15-0308	1
15	LOCKNUT	JM30-0157	8	52	TAG - WARNING RISK OF ELECTROCUTION	JM34-1035	1
16	ISOLATOR	JM14-0069	4	53	CABLE TIE	JM33-0022	1
17	BOLT	JM27-0016	4	54	MOTOR ASSEMBLY	JM851-0388	1
18	SCREW COUPLER	JM23-0490	1	55	DECAL-ON/OFF (SEE 71-0001)	N/A	1
19	HOSE - 18" LONG	JM15-0313	1	56	DECAL - WARNING BACKFLOW PROTECTION (SEE 71-0001)	N/A	1
20	HUB CAP	JM33-0055	2	57	DECAL - WARNING RISK OF ELECTROCUTION (SEE 71-0001)	N/A	1
21	WHEEL	JM14-0124	2	58	HANDLE GRIP	JM7-0167	1
22	FRAME	JM5-0305A64	1	59	DECAL - ON/OFF JM-1450 (SEE 71-0001)	N/A	1
23	WASHER	JM28-0022	8	60	DECAL - CAUTION/IMPORTANT - (E/S) (SEE 71-0001)	N/A	1
24	BOLT	JM27-0067	7	61	DECAL- SILVER STICKER	N/A	1
25	BOLT	JM27-0068	1	62	LOCKWASHER	JM29-0008	4
26	SPRING PIN	JM43-0138	1	63	KEY	JM43-0072	1
27	BOLT	JM27-0850	2	64	POP-OFF VALVE	JM22-0046	1
28	ISOLATOR	JM14-0119	2	65	HEAT DUMP VALVE	JM22-0408	1
29	SHOULDER SCREW	JM27-0895	2	66	DECAL - JM-1450 BASEPLATE	JM34-2625	1
30	SPRING	JM49-0165	2	67	DECAL - JM-1450 1500PSI MAX	JM34-2626	1
31	HANDLE	JM7-0224	1	68	BOLT	JM27-0117	4
32	HANDLE GRIP	JM7-0143	2	69	DECAL - PUMP INSTRUCTIONS (SEE 71-0001)	N/A	1
33	BALL KNOB	JM7-0223	2	70	PUMP	JM3-0367	1
34	BYPASS HOSE	JM15-0020	1	71	TAG - IMPORTANT OIL PLUG	JM34-1067	1
35	HOSE CLAMP	JM42-0011	2	72	HOSE BARB	JM23-0073	1
36	ELBOW	JM23-0123	1	73	DECAL SET/JM-1450	JM71-0001	1
37	FILTER - WATER	JM19-0096	1	*MUST ORDER IN ONE FOOT LENGTHS			



JM-1450 PUMP ASSEMBLY PARTS LIST

ITEM	DESCRIPTION	PART #	QTY	ITEM	DESCRIPTION	PART #	QTY
1	VALVE PLUG	39-0241	6	27	OIL CAP	39-0090	1
2	O-RING - 15.6mm X 1.78mm (SEE 70-0565)	25-0644	6	28	NUT	30-6016	3
3	COMPLETE VALVE (SEE 70-0456)	N/A	6	29	WASHER	26-0187	3
4	SCREW	N/A	8	30	PISTON	46-1459	3
5	WASHER	N/A	8	31	SPACER	28-1027	3
6	HEAD	N/A	1	32	SEAL (SEE 70-0566)	26-0193	3
7	O-RING (SEE 70-0565)	25-0372	1	33	O-RING (SEE 70-0565)	25-0371	3
8	PLUG	39-0202	1	34	PISTON GUIDE	N/A	3
9	O-RING (SEE 70-0565)	25-0510	1	35	CONNECTING ROD	N/A	3
10	PLUG	39-0206	1	36	CONNECTING ROD PIN	46-0721	3
11	RING (SEE 70-0563)	N/A	3	37	O-RING (SEE 70-0565)	N/A	1
12	GASKET (SEE 70-0581)	N/A	3	38	REAR COVER	46-1455	1
13	PACKING RETAINER	46-1457	3	39	O-RING (SEE 70-0565)	25-0387	1
14	GASKET (SEE 70-0581)	N/A	3	40	PLUG	39-0096	1
15	RING (SEE 70-0581)	N/A	3	41	SCREW	N/A	4
16	O-RING (SEE 70-0581)	25-0149	3	42	CRANKSHAFT	N/A	1
17	RETAINER	46-1458	3	43	BEARING	N/A	1
18	PUMP BODY	N/A	1	44	SEAL (SEE 70-0566)	26-0192	1
19	BEARING	48-0063	1	45	FLANGE	46-1460	1
20	SNAP RING	46-0676	2	46	SCREW	N/A	4
21	SNAP RING	46-0732	1	-	KIT - VALVES (INCLUDES ITEM #3)	70-0456	
22	O-RING (SEE 70-0565)	N/A	1	-	KIT - SUPPORT RING (INCLUDES ITEM #11)	70-0563	
23	OIL DISC	46-1451	1	-	KIT - O-RINGS (INCLUDES ITEMS 2,7,9,16,22,33,37,39)	70-0565	
24	OIL INDICATOR	46-1452	1	-	KIT - OIL SEALS (INCLUDES ITEMS 32,44)	70-0566	
25	COVER	46-1453	1	-	KIT - WATER SEALS (INCLUDES ITEMS 12,14,15,16)	70-0581	
26	SCREW	27-8888	8				



**General Wire Spring Co,
1101 Thompson Avenue
McKees Rocks, PA 15136**

412-771-6300 www.drainbrain.com