



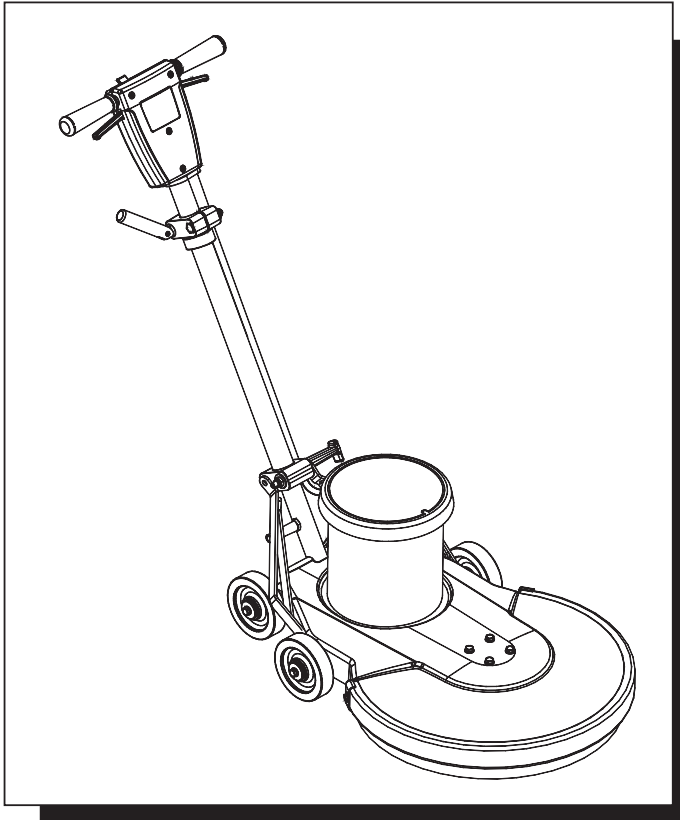
Click Here To View
Item at

www.GapPower.com

*Sales • Rentals
Parts & Service*



HIGH SPEED BURNISHER



Operating Instructions (ENG)

MODEL: LB1500
10090160

QUEST® ... for Continuous Improvement.
Windsor's Quality Management System is Certified ISO 9001.



Read these instructions before using the machine.

H

86037180 12/29/06

PRV NO. 980101

MACHINE DATA LOG/OVERVIEW

MODEL _____

DATE OF PURCHASE _____

SERIAL NUMBER _____

YOUR DEALER

Name: _____

Address: _____

Phone Number: _____

TABLE OF CONTENTS

Machine Data Log/Overview.....2
Table of Contents.....3

HOW TO USE THIS MANUAL

How to use this Manual..... 1-1

SAFETY

Important Safety Instructions2-1
Hazard Intensity Level.2-2
Grounding Instructions.....2-3

OPERATION

Technical Specifications3-1
Handle Installation3-2
Operation3-3
Pad Driver Installation.....3-4

MAINTENANCE

Machine Troubleshooting.....4-1
Wiring Diagram/Service Schedule4-2

GROUP PARTS LIST

Motor Group.....5-1
Frame Group.....5-3
Drive/Pad Lock Group.....5-5
Handle Group.....5-7
Wiring Group.....5-9
Suggested Spare Parts..... 5-11
Warranty 5-12

HOW TO USE THIS MANUAL

This manual contains the following sections:

- HOW TO USE THIS MANUAL
- SAFETY
- OPERATIONS
- MAINTENANCE
- PARTS LIST

The HOW TO USE THIS MANUAL section will tell you how to find important information for ordering correct repair parts.

Parts may be ordered from authorized Windsor dealers. When placing an order for parts, the machine model and machine serial number are important. Refer to the MACHINE DATA box which is filled out during the installation of your machine. The MACHINE DATA box is located on the inside of the front cover of this manual.

MODEL _____
DATE OF PURCHASE _____
SERIAL NUMBER _____
SALES REPRESENTATIVE # _____
DEALER NAME _____
OPERATIONS GUIDE NUMBER _____
PUBLISHED _____

The SAFETY section contains important information regarding hazard or unsafe practices of the machine. Levels of hazards is identified that could result in product or personal injury, or severe injury resulting in death.

The OPERATIONS section is to familiarize the operator with the operation and function of the machine.

The MAINTENANCE section contains preventive maintenance to keep the machine and its components in good working condition.

The PARTS LIST section contains assembled parts illustrations and corresponding parts list. The parts lists include a number of columns of information:

- **REF** – column refers to the reference number on the parts illustration.
- **PART NO.** – column lists the part number for the part.
- **PRV NO.** – reference number.
- **QTY** – column lists the quantity of the part used in that area of the machine.
- **DESCRIPTION** – column is a brief description of the part.
- **SERIAL NO. FROM** – column indicates the first machine the part number is applicable to. When the machine design has changed, this column will indicate serial number of applicable machine. The main illustration shows the most current design of the machine. The boxed illustrations show older designs.
- **NOTES** – column for information not noted by the other columns.

NOTE: If a service or option kit is installed on your machine, be sure to keep the KIT INSTRUCTIONS which came with the kit. It contains replacement parts numbers needed for ordering future parts.

NOTE: The number on the lower left corner of the front cover is the part number for this manual.

IMPORTANT SAFETY INSTRUCTIONS

When using an electrical appliance, basic precaution must always be followed, including the following:

READ ALL INSTRUCTIONS BEFORE USING THIS MACHINE.



To reduce the risk of fire, electric shock, or injury:

Use only indoors. Do not use outdoors or expose to rain.

Use only as described in this manual. Use only manufacturer's recommended components and attachments.

If the machine is **not working properly**, has been dropped, damaged, left outdoors, or dropped into water, return it to an authorized service center.

Do not operate the machine with any openings blocked. Keep openings free of debris that may reduce airflow.

Machine can cause a fire when operating near flammable vapors or materials. Do not operate this machine near flammable fluids, dust or vapors.

This machine is suitable for commercial use, for example in hotels, schools, hospitals, factories, shops and offices for more than normal housekeeping purposes.

Maintenance and repairs **must be done** by qualified personnel.

During operation, attention shall be paid to other persons, especially children.

The machine shall only be operated by instructed and authorized persons.

When leaving unattended, unplug the machine.

Do not handle the plug or machine with wet hands.

Do not unplug machine by pulling on cord. To unplug, grasp the plug, not the cord.

Do not use with damaged cord or plug. Follow all instructions in this manual concerning grounding the machine.

Do not pull or carry by cord, use cord as a handle, close a door on cord, or pull cord around sharp edges or corners.

Do not pull/run machine over cord. **Keep** cord away from heated surfaces.

Connect to a **properly** grounded outlet. See Grounding Instructions.

SAVE THESE INSTRUCTIONS

HAZARD INTENSITY LEVEL

The following symbols are used throughout this guide as indicated in their descriptions:

HAZARD INTENSITY LEVEL

There are three levels of hazard intensity identified by signal words **-WARNING** and **CAUTION** and **FOR SAFETY**. The level of hazard intensity is determined by the following definitions:

WARNING

WARNING - Hazards or unsafe practices which **COULD** result in severe personal injury or death.

CAUTION

CAUTION - Hazards or unsafe practices which could result in minor personal injury or product or property damage.

FOR SAFETY: To identify actions which must be followed for safe operation of equipment.

Report machine damage or faulty operation immediately. Do not use the machine if it is not in proper operating condition. Following is information that signals some potentially dangerous conditions to the operator or the equipment. Read this information carefully. Know when these conditions can exist. Locate all safety devices on the machine. Please take the necessary steps to train the machine operating personnel.

FOR SAFETY:

DO NOT OPERATE MACHINE:

Unless Trained and Authorized.

Unless Operation Guide is Read and understood.

In Flammable or Explosive areas.

In areas with possible falling objects.

WHEN SERVICING MACHINE:

Avoid moving parts. Do not wear loose clothing; jackets, shirts, or sleeves when working on the machine. Use Windsor approved replacement parts.

GROUNDING INSTRUCTIONS

THIS PRODUCT IS FOR COMMERCIAL USE ONLY.

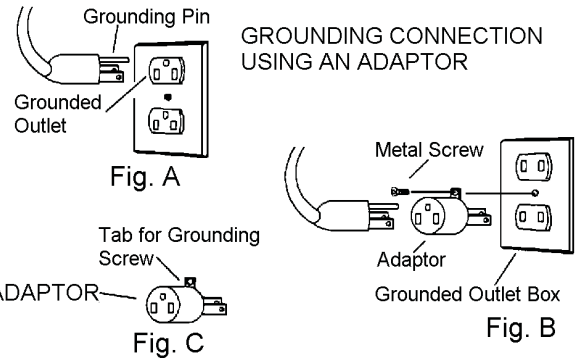
ELECTRICAL:

In the USA this machine operates on a 15 amp nominal 120V, 60 hz, A.C. power circuit. The amp, hertz, and voltage are listed on the data label found on each machine. Using voltages above or below those indicated on the data label will cause serious damage to the motors.

GROUNDING INSTRUCTIONS:

This appliance must be grounded. If it should malfunction or break down, grounding provides a path of least resistance for electric current to reduce the risk of electric shock. This appliance is equipped with a cord having an equipment-grounding conductor and grounding plug. The plug must be inserted into an appropriate outlet that is properly installed and grounded in accordance with all local codes and ordinances.

This appliance is for use on a nominal 120-volt circuit, and has a grounded plug that looks like the plug in "Fig. A". A temporary adaptor that looks like the adaptor in "Fig. C" may be used to connect this plug to a 2-pole receptacle as shown in "Fig. B", if a properly grounded outlet is not available. The temporary adaptor should be used only until a properly grounded outlet (Fig. A) can be installed by a qualified electrician. The green colored rigid ear, lug, or the like extending from the adaptor must be connected to a permanent ground such as a properly grounded outlet box cover. Whenever the adaptor is used, it must be held in place by a metal screw.



Note: Adaptors are not allowed in Canada.

⚠ WARNING

Improper connection of the equipment-grounding conductor can result in a risk of electric shock. Check with a qualified electrician or service person if you are in doubt as to whether the outlet is properly grounded. Do not modify the plug provided with the appliance - if it will not fit the outlet, have a proper outlet installed by a qualified electrician.

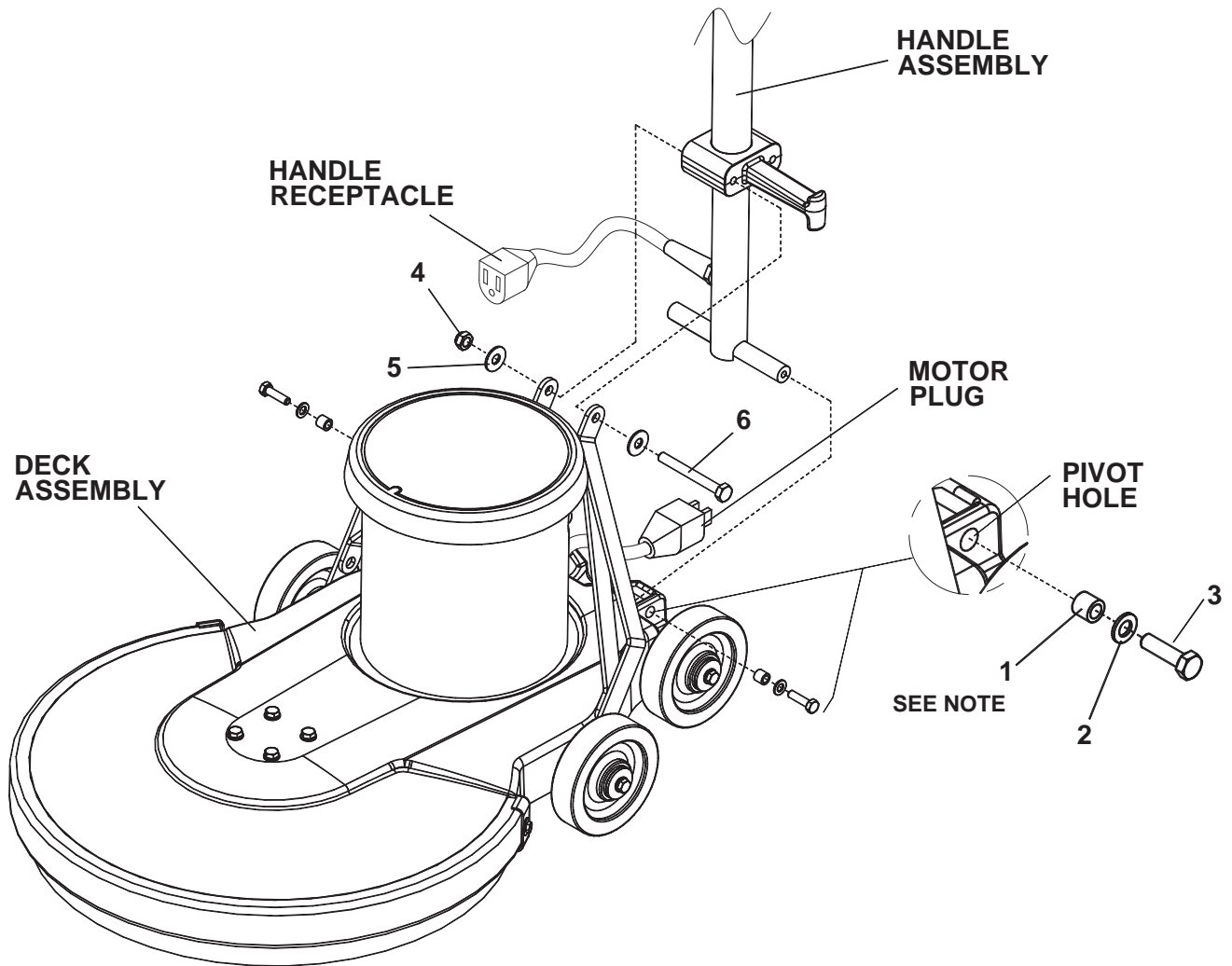
TECHNICAL SPECIFICATIONS

ITEM	DIMENSION/CAPACITY
Construction	Heavy-duty die cast aluminum deck with heavy-duty rubber bumper, tubular steel adjustable handle with die cast aluminum handle housing and belt driven pad.
Motor	1.75 hp
Pad speed	1500 rpm
Electrical system	115 volts, 60 Hz
Cable	50' (23 m), 14/3, built in cord wrap
Switches	Dual levers with safety lock
Wheels	Four 5" (12.7 cm) dia., 1.25" (3 cm) wide, non-marking tread
Handle	1.5" (4 cm) tubular steel, adjustable, easy to use thumb activated safety lock
Dimensions (L x W x H)	31.5" (80 cm) X 21.5" (54 cm) X 48.5" (123 cm)

NOTE: Always use a pad which has been designed for electric ultra high speed burnishing of at least 2000 rpm.

The sound pressure level at the operator's ear was measured to be 70 dBA. This was a nearfield, broad-band measurement taken in a typical industrial environment on a tile floor. This appliance contains no possible source of impact noise. The instantaneous sound pressure level is below 63 Pa.

HANDLE INSTALLATION



The machine is shipped with handle unassembled.

Follow these steps for installation:

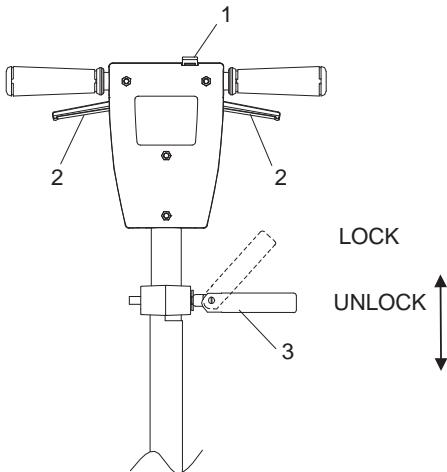
1. Remove handle and deck assembly from carton.
2. Attach handle assembly to base using hardware kit (86219680 PRV NO. 47331) (attached to handle in a plastic bag) items 1, 2, and 3.
3. Remove bolt, nut and washers (items 4, 5 and 6) from lower block on handle assembly. Attach links as shown. Tighten bolt and nut securely, then back off 1/4 to 1/2 turn.
4. Check handle for movement up and down.
5. Plug motor cord into handle cord receptacle.

NOTE: The spacers (items 1) are required for the correct operation of the handle. The spacers are positioned completely inside the pivot holes in the casting, and are held in place by tightening the bolts and washers (items 2 and 3) against the spacer.

OPERATION

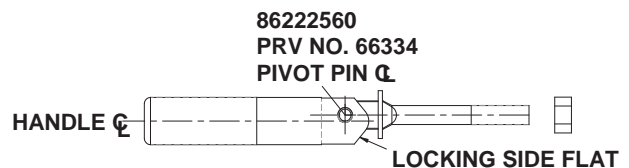
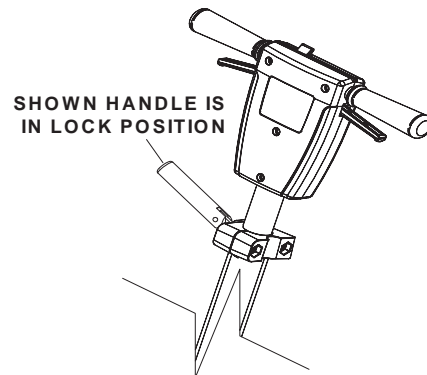
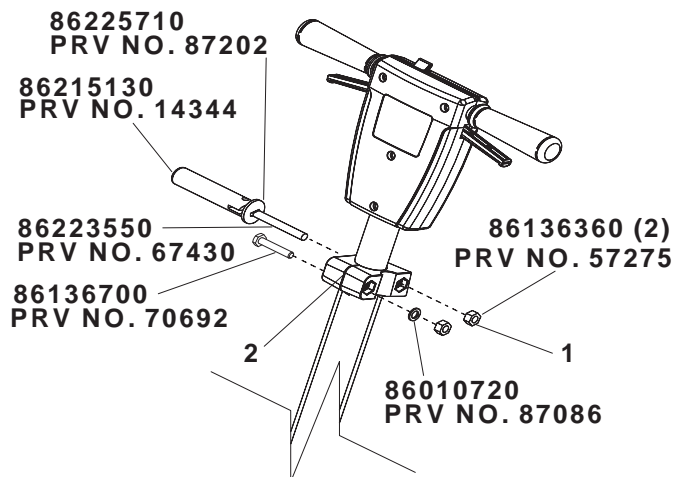
CONTROLS

1. **Safety Lock** – Prevents unintended operation of the machine.
2. **Switch Levers** – Turns machine on/off.
3. **Adjustment Handle** – Allows the handle to be adjusted to a comfortable operating position.



The handle adjust bar (86215130 - PRV NO. 14344) for the polishers are individually preset at the factory for optimum locking efficiency and minimum effort of engaging. It should not be necessary to adjust the handle adjust bar unless the relationship of the handle adjust bar nut (86136360 - PRV NO. 57275) or fixed clamp bolt (86136700 - PRV NO. 70692) and their corresponding nuts (86136360 - PRV NO. 57275) and washer (86010720 - PRV NO. 87086) have been disturbed. The handle can be positioned to be locked with the handle adjust bar pointing either up or down. In order to change the position the handle and bolt must be removed and rotated 180 degrees. It is incorrect to make it lock opposite from the way it was assembled by applying more force to the nut. From the factory the locking is in the up position when the machine handle is locked. The pivot pin (86222560 - PRV NO. 66334) on the handle adjust bar is off center, in relationship of the screw to the axis of the (see drawing). To adjust handle adjust bar, tighten nut on handle while in the locked position. The handle is locked when the screw is to the outside of the machine and the flat on the opposite side of the handle is flush to the bracket.

1. To adjust handle lock, tighten nut on handle while in the locked position. Optimum locking force and ease of locking is accomplished when the locking lever nut is set to a torque of 30 to 50 inch pounds in the locked position.
2. Gap between clamp halves at the front should be to the gap in rear when the handle adjust bar is adjusted properly and in the locked position (gap approximately 1/16").



OPERATION



CAUTION

For indoor use only.

When using the pad, always keep the machine moving when in contact with the floor.



WARNING

High starting torque. Hold machine firmly with both hands.

1. Ensure that the pad driver is in good shape. Install or change pad if necessary.
2. Plug the machine into a wall outlet as described in the grounding instructions.
3. Lower the handle by unlocking the adjustment handle and moving the handle into position. Relock the handle when it is in a comfortable position.



WARNING

Insure that handle is locked in position before starting machine.

4. Push the safety lock forward, unlocking the switch levers.
5. With the safety lock forward, squeeze one or both of the switch levers, turning the machine on. (These levers can be operated independently of each other). The safety lock will not re-engage until both levers are released.
6. To stop the machine, release the switch levers.
7. Do not let machine rest on pad. When finished with the machine, return handle to the storage position.

NOTE: The machine is equipped with a circuit breaker to protect the motor in the event an overload condition occurs. The circuit breaker is located on the rear of the motor. Push the reset button to restart the machine. If the breaker trips again, correct the cause of overloading before proceeding.

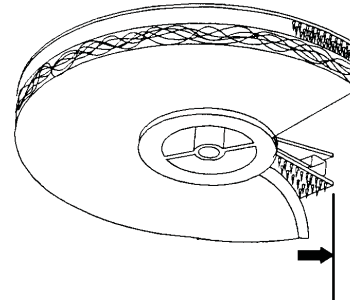
DAILY MAINTENANCE

1. Inspect power cord for wear. To prevent electrical shock replace cords with frayed or cracked insulation immediately.
2. Place machine in the storage position.
3. Check pad condition. Change if soiled or torn.

PAD INSTALLATION

1. Lay machine back, exposing the under side.

Ensure pad is centered on pad driver. Pull pad to edge of pad driver in several directions to check for proper engagement.

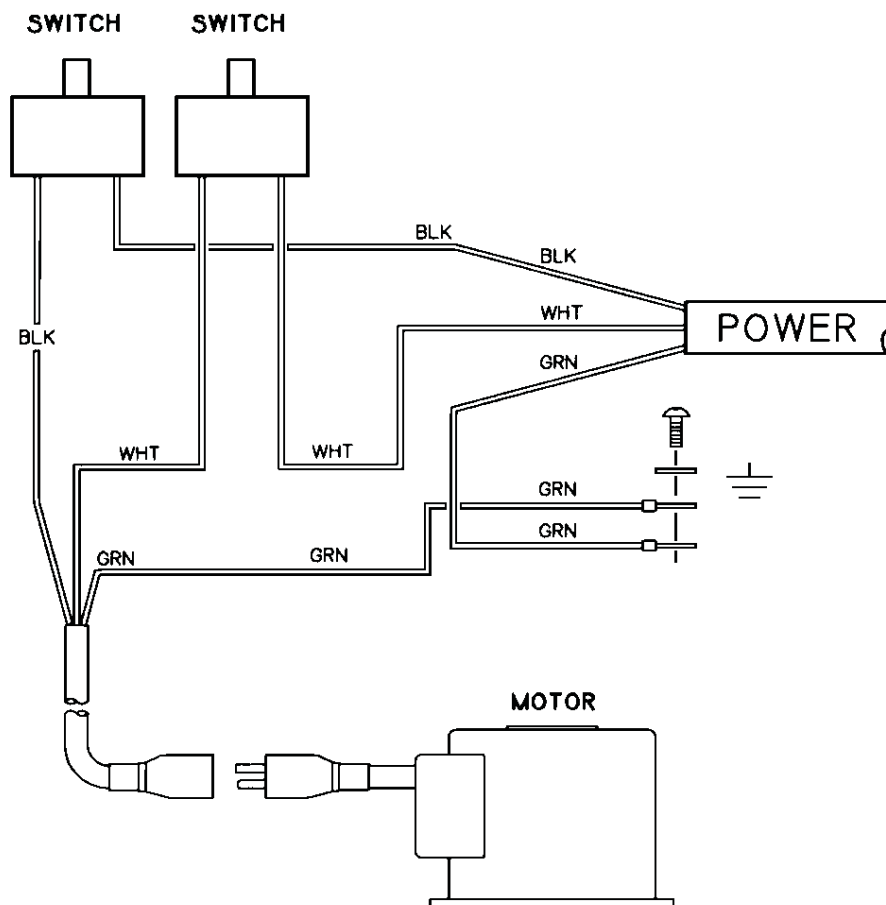


NOTE: Use care when replacing center lock to prevent cross threading.

TROUBLESHOOTING

PROBLEM	CAUSE	SOLUTION
Machine will not run	Circuit breaker tripped in building.	Check and reset.
	Power switch failure.	Test switch for continuity and replace if necessary.
	Tripped circuit breaker.	Reset.
	Faulty power cord.	Replace.
	Fuse in motor is blown.	Replace. CAUTION: To reduce the risk of electrical shock, unplug the machine before opening fuse holder. Fuse will only open under extreme conditions. Investigate cause before replacing.
Electrical shock	Equipment not grounded.	Follow grounding instructions exactly.
	Receptacle not grounded.	Have an electrician inspect building's wiring.
	Internal wiring problem	Ensure that the machine wiring matches the appropriate wiring diagram. Replace any wires or components that are short-circuiting.
Repeated circuit breaker tripping	Mechanical problem.	Higher amp draws indicate a mechanical problem, find the problem before using the machine.
	Faulty circuit breaker.	Test circuit for continuity. Replace circuit breaker if necessary.
Excessive vibration	Pad not centered.	Re-center pad.
	Damaged or unevenly worn pad.	Replace pad. Do not rest machine on pad when not in use.
	Damaged pad driver.	Replace.
Pad does not turn but motor is running	Belt is loose or broken	Adjust or replace belt.

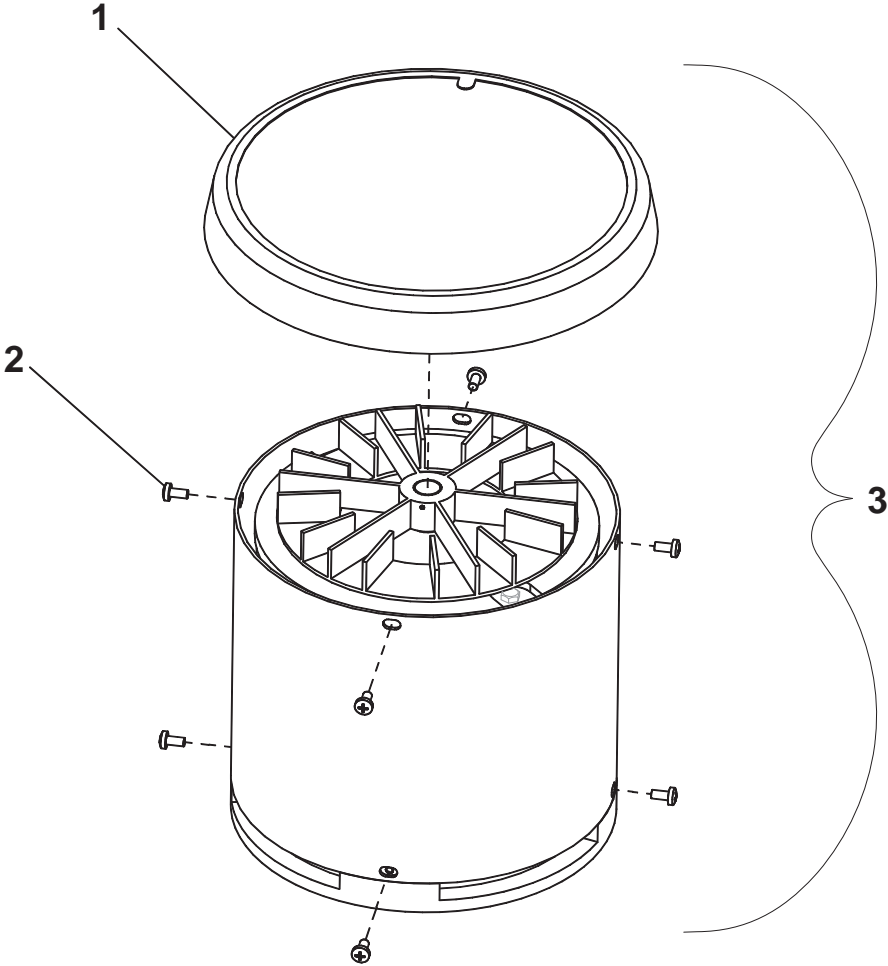
115V Diagram Single Speed



SERVICE SCHEDULE

MAINTENANCE	DAILY	MONTHLY
Check pad wear to prevent buildup of chemicals	*	
Check pad driver system for damage	*	
Check handles, switches, and knobs for damage	*	
Store with pad off the floor	*	
Check all bearings for noise		*
Check skirt/bumpers for damage and replace as necessary		*
Check overall performance of machine		*

MOTOR GROUP



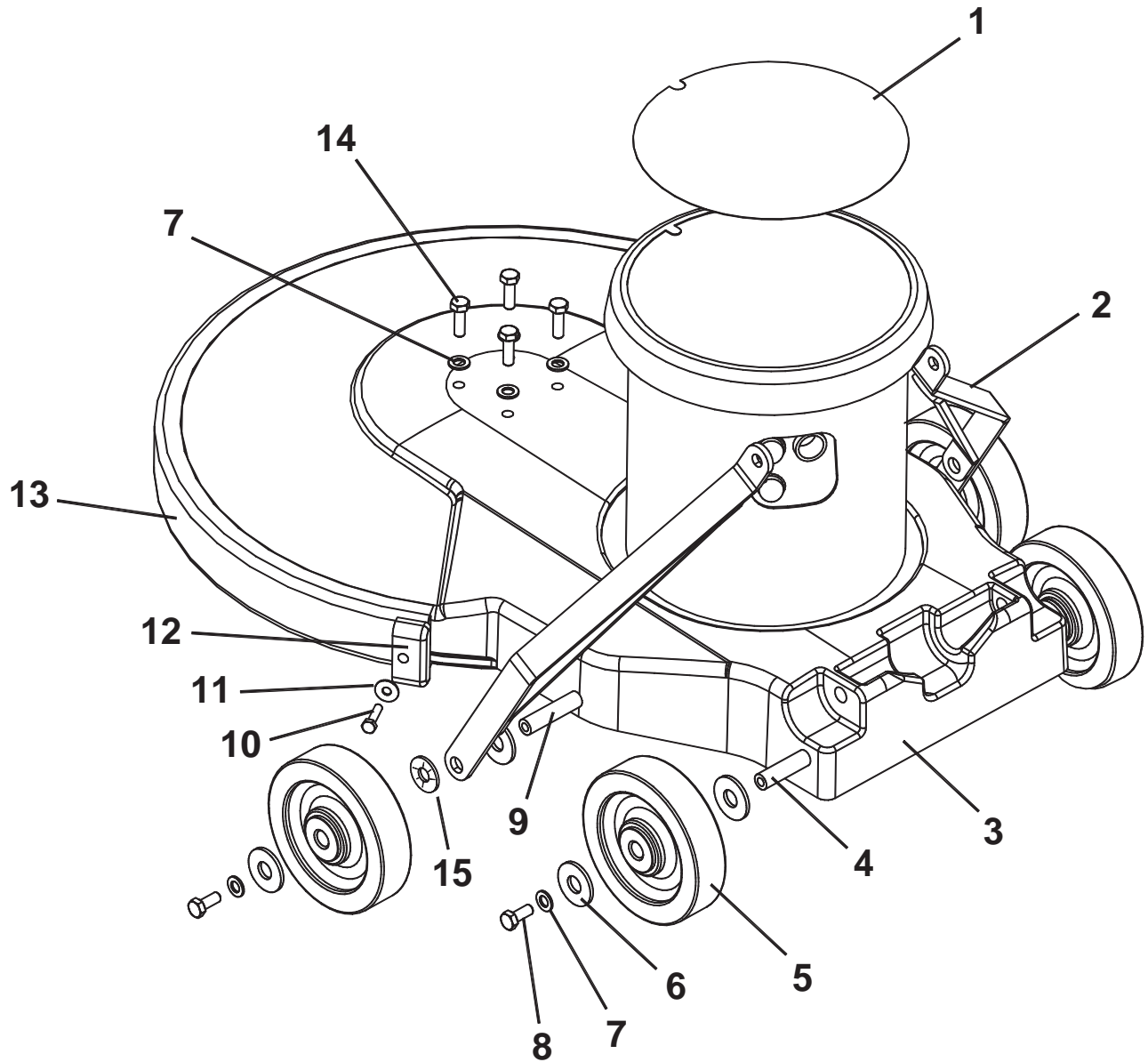
MOTOR GROUP

REF	PART NO.	PRV NO.	QTY	DESCRIPTION	SERIAL NO. FROM	NOTES:
1	86217500	27892	1	COVER ASM, MOTOR		
2	86223680	70700	8	SCR, M5 X .8 X 10 PHMS BLK		
3	86222060	53249	1	MOTOR, 115V 1.75 HP		INCLUDES ITEM 1 & 2

MOTOR COMPONENTS (NOT SHOWN)

PART NO.	PRV NO.	QTY	DESCRIPTION	SERIAL NO. FROM	NOTES:
86216720	140694	1	CIRCUIT BREAKER, 25 AMP MP/MB		
86223390	67488	1	RECTIFIER, 50A 600V BRIDGE		
86001820	14404	1	BRUSH SET MOTOR (PKG OF 4)		
86003660	34378	1	FUSE		
86003670	34379	1	FUSE HOLDER		
86001020	09135	2	BEARING, MOTOR		

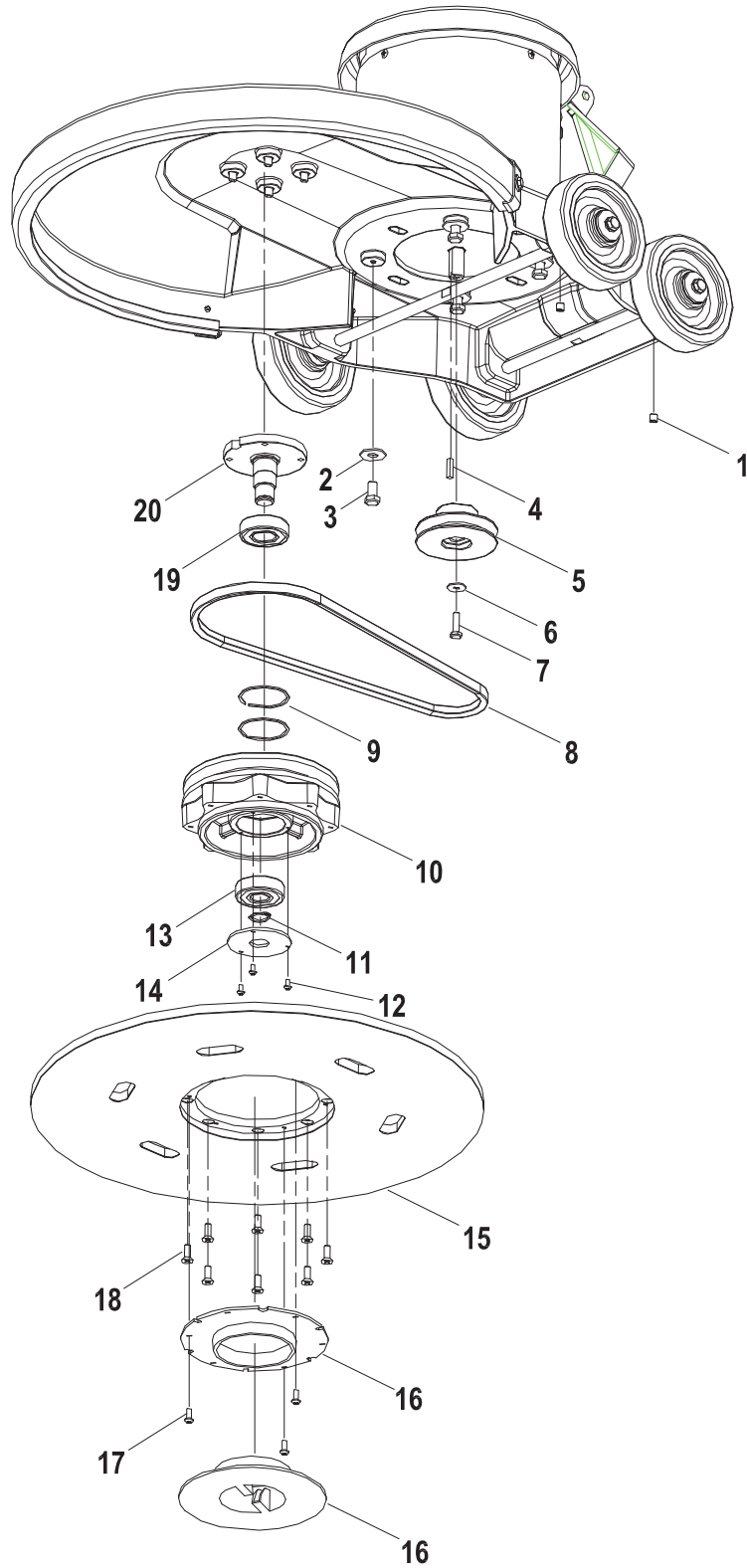
FRAME GROUP



FRAME GROUP

REF	PART NO.	PRV NO.	QTY	DESCRIPTION	SERIAL NO. FROM	NOTES:
1	86220050	500766	1	LABEL, LIGHTNING 1500 MAIN		
2	86215460	140397	2	BRACKET, HANDLE LINK		
3	86217630	29229BLU	1	DECK, 20 IN BURNISHER, BLUE		
4	86214930	03111	1	AXLE, MAIN POLISHER		
5	86226020	89206	4	WHEEL, 5D X 1.25 X 13MM ID GRY		
6	86225720	87203	8	WASHER, 14MM ID X 36MM OD		
7	86137280	87054	8	WASHER, M8 FLAT DIN125A PLTD		
8	86136640	70262	4	SCR, M8 X 20 HHMS PLTD		
9	86214950	03116	1	AXLE, MAIN BURNISHER		
10	86276570	70691	2	SCR, M6 X 25 HHMS BLK		
11	86137340	87211	2	WASHER, M6 FLAT BLK		
12	86216600	27871	2	CAP, EXTRUSION		
13	86216360	14423	1	BUMPER, EXTRUSION 44.30 IN		
14	86288730	70184	4	SCR, M8 X 25HHCS		
15	86222270	57276	2	NUT, PUSH FLAT RD .51 ID		

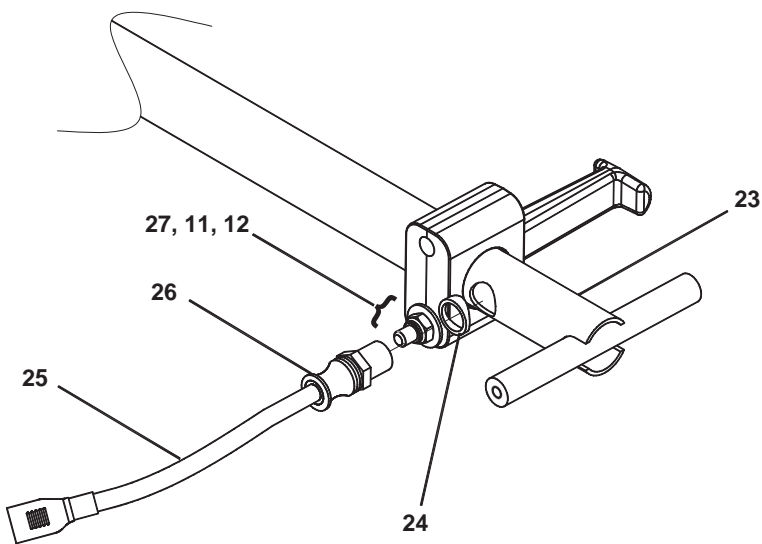
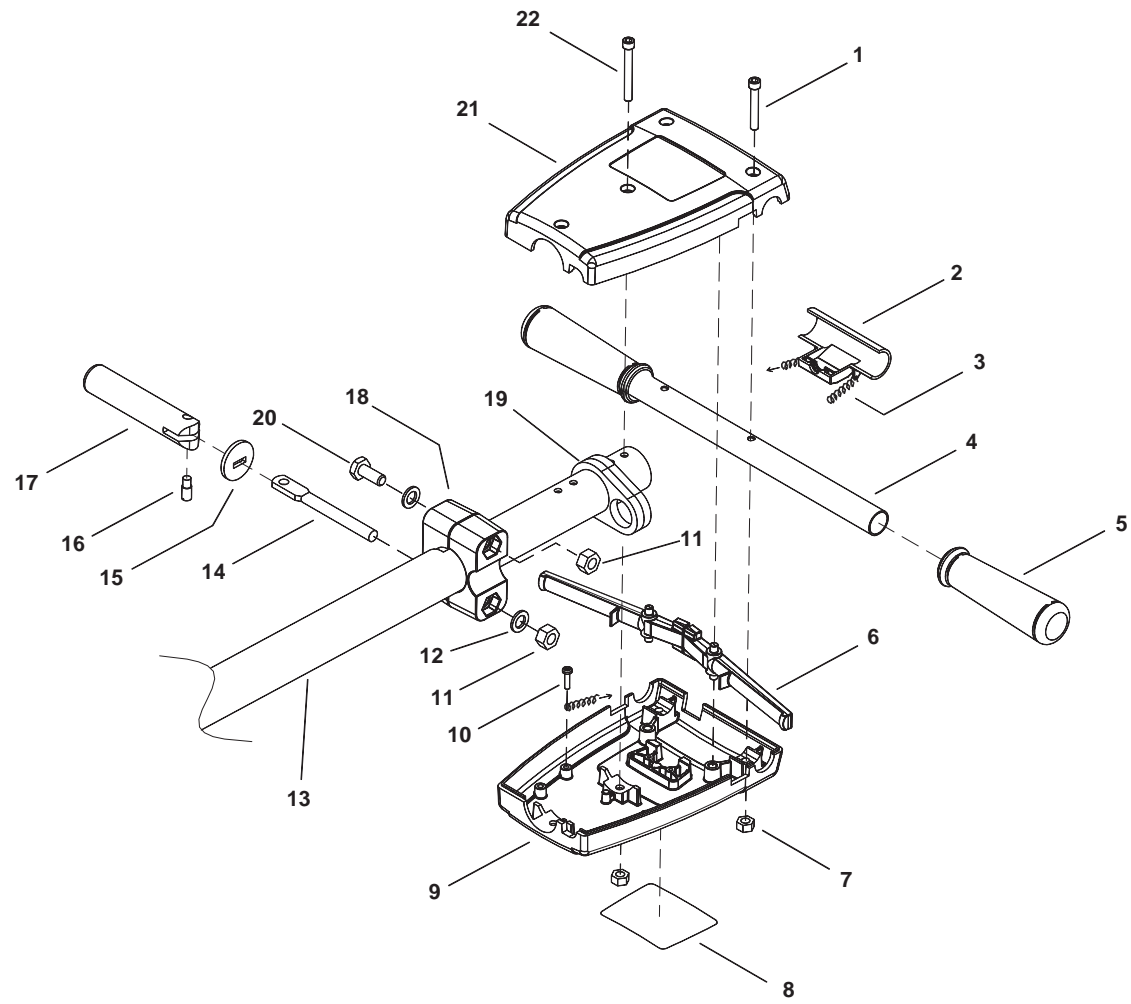
DRIVE/PAD LOCK GROUP



DRIVE/PAD LOCK GROUP

REF	PART NO.	PRV NO.	QTY	DESCRIPTION	SERIAL NO. FROM	NOTES:
1	86288740	70709	2	SCR, SET M8 X 1.25 X 8MM CUP POINT		
2	86010720	87086	4	WASHER, M10 X 30 PLTD		
3	86006920	70507	4	SCR, 3/8-16 X 3/4 HHCS GR5 PLTD		
4	86004820	48041	1	KEY, 3/16 SQ X 7/8 CRS		
5	86223280	64106	1	PULLEY, .625 X 3.45		
6	86225730	87218	1	WASHER, M6 (20.5OD X 1.6T) PLTD		
7	86275570	70505	1	SCR, 1/4-20 X 1.00 HHCS GR5 PLTD DL		
8	86215330	14424	1	BELT, DRIVE 38 IN		
9	86223480	67450	2	RING, 52MM INTERNAL SNAP		
10	86223290	64107	1	PULLEY, BURNISHER		
11	86223470	67449	1	RING, 20MM EXTERNAL SNAP		
12	86276730	70719	3	SCR, M4 X 8MM LG PPHMS		
13	86223970	09133	1	BEARING, 20MM X 52MM		
14	86217510	27913	1	COVER, BEARING		
15	86222480	66426	1	PAD DRIVER, 20 IN BURNISHER FLEX		
16	86246740	51353	1	LOCK, PAD DRIVER BLUE		
17	86276740	70720	3	SCR, #10 X 3/8 PPHST TYPE B		
18	86006670	70201	8	SCR, 1/4-20 X 3/4 FHCS DL		
19	86223980	09134	1	BEARING, 25MM X 52MM		
20	86214940	03115	1	AXLE, PAD DRIVER		

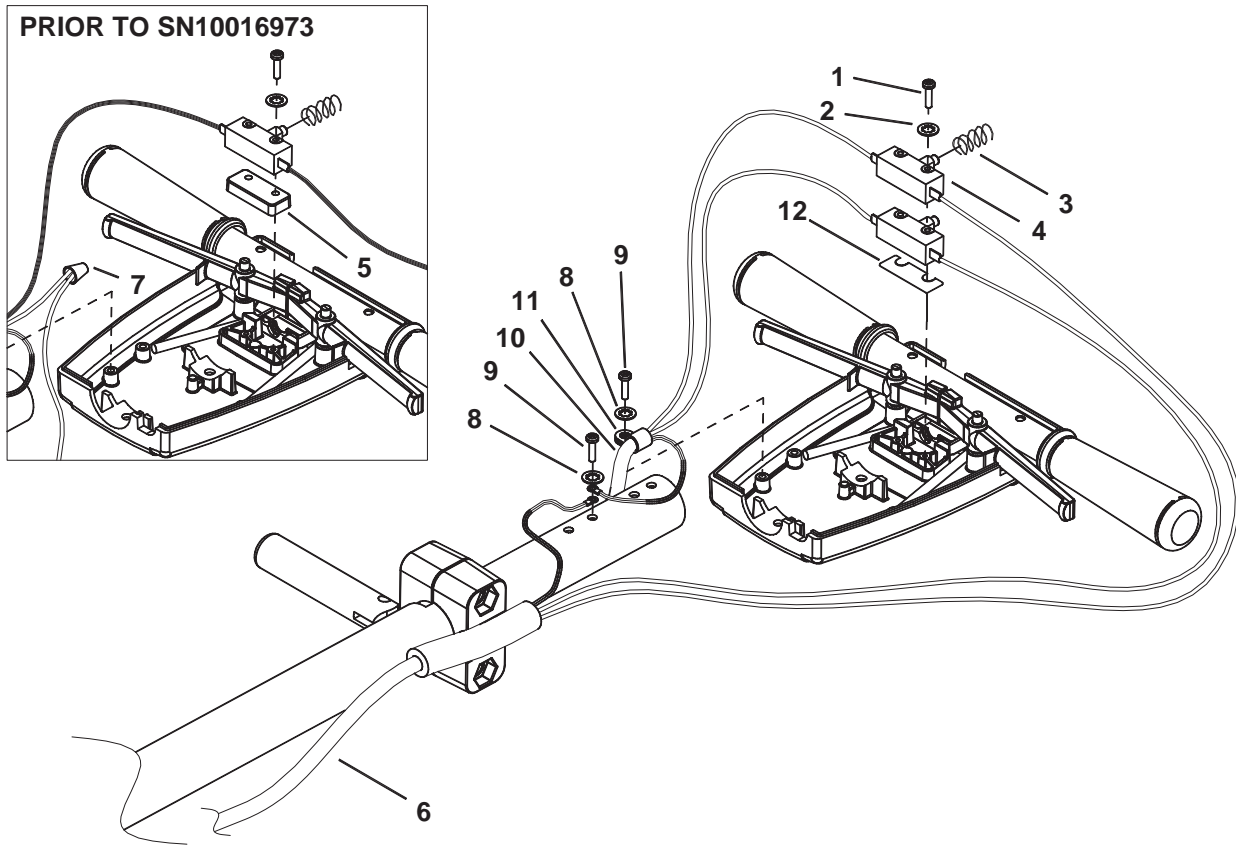
HANDLE GROUP



HANDLE GROUP

REF	PART NO.	PRV NO.	QTY	DESCRIPTION	SERIAL NO. FROM	NOTES:
1	86136670	70686	2	SCR, M6 X 45 SHCS BLK		
2	86005150	51326	1	LOCK, SAFETY HANDLE		
3	86224740	73990	2	SPRING, EXT. .5OD X 3.5L		
4	86225370	78437	1	TUBE, GRIP HANDLE		
5	86004070	36196	2	GRIP, POLISHER HANDLE		
6	86005160	51327	2	LEVER, SWITCH		
7	86136350	57274	4	NUT, M6 X 1		
8	86219740	500194	1	LABEL, WARNING		
9	86219320	41363	1	HOUSING, POLISHER HANDLE REAR		
10	86288450	70689	2	SCR, M4.8 X 10 HHTF TYPE B		
11	86136360	57275	3	NUT, M10 X 1.5 HEX NYLOCK PLTD		
12	86010720	87086	3	WASHER, M10 X 30 PLTD		
13	86225420	78544	1	TUBE ASM, HANDLE EXTND		
14	86223550	67430	1	ROD, HANDLE ADJUSTMENT		
15	86225710	87202	1	WASHER, BEARING (HANDLE ADJ)		
16	86222560	66334	1	PIN, PIVOT HANDLE ADJUSTMENT		
17	86215130	14344	1	BAR, HANDLE ADJUSTMENT		
18	86215380	140393	1	BLOCK, HANDLE MOUNT		
19	86216370	14434	2	BUMPER, BURNISHER HANDLE		
20	86136700	70692	1	SCR, M10 X 75 HHCS PLTD		
21	86219330	41366	1	HOUSING, POLISHER HANDLE FRONT		
22	86136680	70687	2	SCR, M6 X 50 SHCS BLK		
23	86218500	38316	1	HANDLE, BRNSHR EXTND		
24	86224300	730021	1	SPACER, POLISHER HANDLE		
25	86216920	23206	1	CORDSET, 14/3 X 52" SJT BLK		
26	86224930	730012	1	STRAIN RELIEF, 14/3 STRAIGHT		
27	86136720	70701	1	SCR, M10 X 1.5 X 90 HHCS PLTD		

WIRING GROUP



WIRING GROUP

REF	PART NO.	PRV NO.	QTY	DESCRIPTION	SERIAL NO. FROM	NOTES:
1	86136780	70801	2	SCR, M3.5 X 40 PHTF TYPE B	10020019	WAS 70688
2	86137290	87057	2	WASHER, M4 SHAKEPROOF		
3	86224750	73993	1	SPRING, COMP, .48OD X .91L		
4	86007110	72123	2	SWITCH, 25A SPST 125-250V SNAP	10020019	WAS QTY 1
5	86224550	73989	1	SPACER, SWITCH POLISHER		
6	86234150	23167	1	CORD SET, 14/3 STO X 50' YLW		
7	86247920	57069	1	NUT, ORG WIRE (2-5 18G/2-14G)		
8	86137330	87208	2	WASHER, M5 SHAKEPROOF PLTD		
9	86288450	70689	2	SCR, M4.8 X 10 HHTF TYPE B		
10	86216920	23206	1	CORDSET, 14/3 X 52", SJT, BLK		
11	86198450	20005	1	CLAMP, 5/16 NYLON		
12	86215140	140674	1	BARRIER SHEET	10020019	

SUGGESTED SPARE PARTS

PART NO.	PRV NO.	DESCRIPTION	SERIAL NO. FROM	NOTES:
86225710	87202	WASHER, BEARING (HANDLE ADJ)		
86224740	73990	SPRING, EXT .5 OD X 3.5 L		
86224750	73993	SPRING, COMP .48 OD X .91L		
86007110	72123	SWITCH, 25A SPST 125-250V SNAP		
86215130	14344	BAR, HANDLE ADJ		
86222560	66334	PIN, PIVOT HANDLE ADJ		
86223550	67430	ROD, HANDLE ADJ		
86216720	140694	CIRCUIT BREAKER, 25 AMP MP/MB		
86223390	67488	RECTIFIER, 50A 600V BRIDGE		
86001820	14404	BRUSH SET MOTOR (PKG OF 4)		
86003660	34378	FUSE		
86003670	34379	FUSE HOLDER		
86001020	09135	BEARING, MOTOR		
86215460	140397	BRACKET, HANDLE LINK		
86226020	89206	WHEEL, 5D X 1.25 X 13MM ID GRY		
86225720	87203	WASHER, 14MM ID X 36MM OD		
86216600	27871	CAP, EXTRUSION		
86216360	14423	BUMPER, EXTURSION 44.30 IN		
86222270	57276	NUT, PUSH FLAT RD .51 RD		
86223470	67449	RING, 20M EXTERNAL SNAP		
86222480	66426	PAD DRIVER, 20IN BURNISHER FLEX		
86246740	51353	LOCK, PAD DRIVER BLUE		
86223970	09133	BEARING, 20MM X 52MM		
86215330	14424	BELT, DRIVE 38 IN		
86223980	09134	BEARING, 25MM X 52MM		
86217510	27913	COVER, BEARING		



WINDSOR INDUSTRIES
North American New Machine Warranty
 Effective on all products shipped *AFTER* July 31, 2007

Limited Warranty

Windsor Industries warrants new machines against defects in material and workmanship under normal use and service to the original purchaser. Any statutory implied warranties, including any warranty of merchantability or fitness for a particular purpose, are expressly limited to the duration of this written warranty. Windsor will not be liable for any other damages, including but not limited to indirect or special consequential damages arising out of or in connection with the furnishing, performance, use or inability to use the machine. This remedy shall be the exclusive remedy of the buyer. The warranty period is subject to the conditions stated below.

10 / 3 Warranty: 10 Years Polyethylene (PE) Housings, 3 Years Parts, and Service Labor

Subject to conditions outlined below, Windsor Industries warrants rotationally molded PE housings and parts on all of its machines to be free from defects in material and workmanship, under normal use and service for ten (10) years to the original owner.

Under this warranty we guarantee the performance of non-polyethylene parts and components to be free from defects for up to three (3) years or up to 2,500 hours of operation, whichever comes first, to the original end user. Parts replaced or repaired under this warranty are guaranteed for the remainder of the original warranty period. (See table below)

Service labor charges are covered for up to three (3) years or up to 2,500 hours of operation, whichever comes first, from the date of purchase through authorized Windsor service provider. No travel coverage is extended for cord-electric models. See table below for each general product model warranty coverage.

Product	PE Housing & Parts	Non- PE Parts	Service Labor	Travel
Rider / Stand up Scrubbers	10 years	3 years or 2000 hours	3 years or 2000 hours	6 Months
Rider Sweepers	10 years	3 years	3 years	6 Months
Walk Behind Scrubbers	10 years	3 years or 2500 hours	3 years or 2500 hours	6 Months
Walk Behind Sweepers	10 years	3 years	3 years	6 Months
Battery Burnishers	10 years	3 years	3 years	6 Months
Extractors / Compass	10 years	3 years	3 years	-
Polishers / Elec. Burnishers / GH/iCapsol Mini	10 years	3 years	3 years	-
Wide Areas Vacuums	10 years	3 years	3 years	-
VacPak Vacuums	10 years	1 year	1 year	-
Tracer/Flex Sweepers/Scrubbers	10 years	3 year	3 months	90 days
Air Movers / Dri-matic / TITAN™ /Rombus/Priza	1 year	1 year	1 year	-
Canister Vacuum	1 year	1 year	1 year	-
Wet/Dry Vacuum	1 year	1 year	1 year	-
Broom	1 year	1 year	1 year	-
Steamer	1 year	1 year	1 year	-
Propane Burnishers / Strippers	-	2 year	1 year	-

VERSAMATIC® / FLEXAMATIC®	Brush motor, Vacuum motor, Belts, Swivel Neck – 3 years	All other parts/Labor – 1 year
SENSOR®	Vacuum motor, Belts – 2 years	All other parts/Labor – 1 year

Product exceptions and Exclusions:

- Extractor brush motors, **ALL** pump motors, **ALL** PC boards and electronics, **ALL** Vacuum motors (other than VERSAMATIC®, SENSOR® and FLEXAMATIC®), **ALL** pumps, and diaphragms/Tank bags carry a one (1) year parts and service labor warranty.
- The Eagle-Robin® engines have three (3) year manufacturer’s warranty. The Honda® and Kawasaki® engines have two (2) year manufacturer’s warranty. **NOTE:** The engine warranty is administered through the engine manufacturer and must be repaired at an authorized service center.

Windsor Industries reserves the right to change its warranty policy without notice



WINDSOR INDUSTRIES
North American New Machine Warranty
Effective on all products shipped *AFTER* July 31, 2007

Normal wear items and accessories including, but not limited to, belts, brushes, FLEXAMATIC® foot pedal, capacitors, carbon brushes, casters, clutches, cords, filters, finishes, gaskets, hoses, light bulbs, rectifiers, switches, squeegees, bearings, pulleys, relays, actuating cables, wheels, tires, and propane tanks will be warranted for manufacturing defects for 90-days from the purchase date.

The warranty commences on the purchase date by the original end user from an authorized Windsor agent, subject to proof of purchase. The Machine Registration Card must be completed and returned immediately at the time of purchase. If proof of purchase cannot be identified, the warranty start date is 90 days after the date of sale to an authorized Windsor distributor. Parts replaced or repaired under warranty are guaranteed for the remainder of the original warranty period.

90 Day Warranty Extension Available

Upon receipt of the Machine Registration Card, Windsor will extend by 90 days, from the date of purchase, all items included under the one-year provision. This applies only to one-year items and does not include 90-day wear items.

This Warranty Shall Not Apply To:

1. Any product that has been subject to abuse, misuse, neglect or unauthorized alteration (including the use of incompatible or corrosive chemicals or overloading of capacity).
2. Products that have experienced shipping or freight damage.
3. Repairs necessary to correct any failure due to improper pre-delivery service and inspection by the selling dealer.
4. Excessive time for cleaning units in preparation for repair.
5. Any repairs resulting from poor initial service work or improper diagnosis.
6. Tune-up parts such as plugs, plug wires and condensers.
7. Any design alterations performed by an organization not authorized or specified by Windsor.
8. Battery and charger warranties are handled directly with the manufacturer (Trojan® batteries and Lester® chargers).
9. High-pressure washing.
10. Electrical components exposed to moisture.

If difficulty develops during the warranty period, contact the authorized Windsor agent from whom the product was purchased. Windsor Industries may elect to require the return of components to validate a claim. Any defective part to be returned must be shipped freight prepaid to an authorized Windsor Distributor/Service Center or to the Windsor factory.

Use Of Parts Not Approved By Windsor Industries Will Void All Warranties

This warranty is valid only for all products Shipped/Sold *AFTER* July 31, 2007. A product sold before that date shall be covered by the limited warranty in effect at the date of sale to the original purchaser.