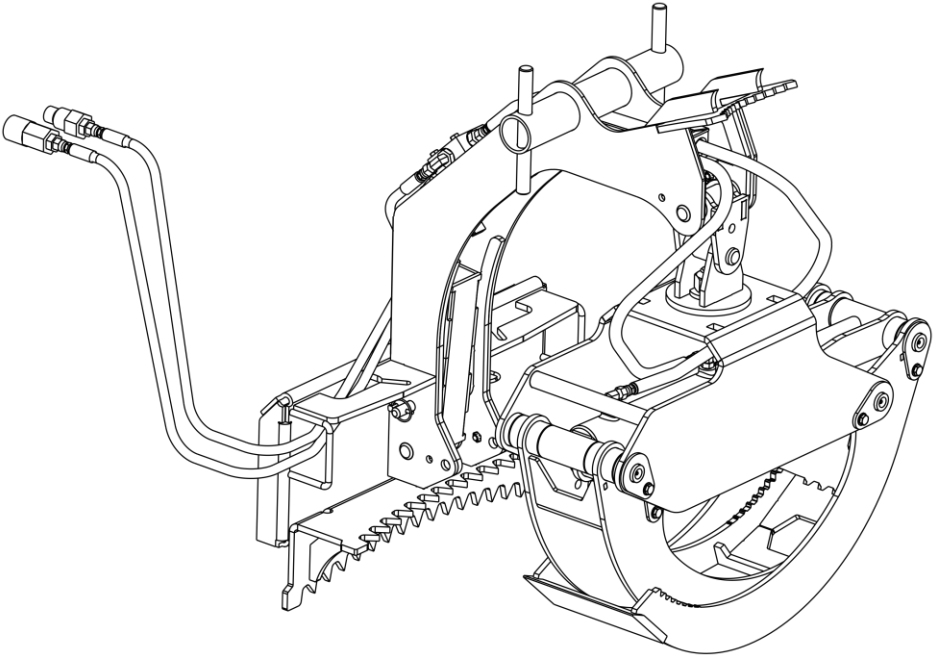


V20 Compact Log Grapple

Shown with Standard Mini Mount and Manual Rotate



Model Number _____ **CLG**

Serial Number _____

Serial Number 257383 - Current
Manufacture Date 03/04/24 - Current

Phone: 320-818-4040

03/04/24

CLG
15630VM

Features of Compact Log Grapple include:

- Jaws feature 60" opening and bypass each other for grabbing smaller logs.
- AR400 steel jaw tines with serrated tips to provide a secure grip.
- Holding valve prevents jaws from drifting open during use.
- Standard push bar, rope tie-off points and trailer receiver hitch.
- Serrated cradle securely grips logs in vertical and horizontal positions.
- 270° manual rotation. 360° hydraulic rotation available.
- Optimized hose routing and fully greaseable pins with recessed grease zerks safeguarded from potential damage.

Initial Use

- Hoses may be routed through either the right or left loops of the standard mini mount. The Bobcat and ASV mini mounts are intended to route through the left loop.
- Check that interface on Log Grapple fits onto loader properly. Pins must engage through the plates at bottom of interface.
- With Log Grapple attached, slowly roll back attachment while monitoring for interference and ensure hoses do not pinch.
- Raise Log Grapple and slowly roll forward. Ensure hoses are unencumbered and there is no interference between loader and Log Grapple. Lead hoses should not stretch.
- Cycle jaw open/close. Check for oil leaks per instructions in "Maintenance" section.
- If equipped, run rotator motor in both directions. Check for oil leaks.
- If Log Grapple is equipped with a hydraulic rotator with electric control it is recommended to zip tie the cabling to the loader arm to keep it from being pinched. Place the control box in a comfortable position and test functions once the box is powered on.
- Read and understand all warning information in this manual before operating this attachment.
- Never exceed the maximum attachment operating pressure of 3800 psi.

Operation

- Always follow all safety and operating instructions of loader.
- Never attempt to lift more than the operating capacity (attachment weight and load) of loader. Attachment weights:

Interface	Manual Rotate	Hydraulic Rotate
Standard Mini	300 lbs.	350 lbs.
Bobcat Mini	340 lbs.	400 lbs.
ASV Mini	345 lbs.	405 lbs.

- Always relieve pressure before disconnecting hydraulic hoses.
- Never hit or pound couplers.
- Never ram objects with pusher extension.
- While using rope bollards, always be aware of surroundings and weight of items being transported.
- Never hook a chain on bollard tube.
- Check for debris in interface area before each hook-up.
- Receiver hitch is only intended for local transport of wood chipper, trailer, etc.
- Stay clear of jaw while operating. The linkage allows for free movement and the jaw extends to 60 inches wide.
- Basic functions of the Log Grapple include log transport, log/debris stacking and feeding a wood chipper.
- Transport of long logs should be performed with the timber butt firmly held in the serrated cradle under the interface with the grapple closed around the log.

Maintenance

*Every 10 hours of operation

- Grease hinge pins and cylinder pins (9 grease fittings total).
- Inspect cylinder, hydraulic fittings, and hoses for leaks and damage. Replace as needed. Make sure loader is shut off and hydraulic pressure is relieved before checking for leaks. Never use hands to check for high pressure hydraulic leaks.

*Every 50 hours of operation

- Check that cylinder and hinge pins are secure.
- Check for loose, worn, or missing parts. Repair or replace as needed.
- Contact your dealer for replacement parts.

Labels on Compact Log Grapple Attachment



5265PP – HYDRAULIC WARNING LABEL

This label has several important instructions that must be followed for safe operation of this attachment.



15376PP – HYDRAULIC ROTATION LABEL

This label has specific warning information that must be followed for safe operation of the rotating grapple.

Compact Log Grapple Label Parts List

ITEM	PART NO.	QTY	DESCRIPTION
1	5265PP	1	HYDRAULIC WARNING LABEL
2	15376PP	2	HYDRAULIC ROTATION WARNING LABEL
3	SERIALTAG	1	SERIAL NUMBER TAG



Compact Log Grapple (CLG) Parts List

ITEM	PART NO.	QUANTITIES			DESCRIPTION
		MANUAL	ROTATOR-ELEC	ROTATOR-HYD	
1	1000PP		2	2	3/8"-16 X 2 1/2" LG HHCS
2	1008PP		4	4	5/8"-11 TOP LOCK NUT
3	1012PP		4	4	ELBOW 90 6FJX TO 6MJ
4	10137PP		1		CYL 2" BORE X 8 3/8" STROKE
5	1034PP		9		1/4"-28 STRAIGHT GREASE ZERK
6	10489PP	2	2	4	HYD HOSE 1/4" X 68" LG 6FJX TO 6FJX W/
7	10654PP	1			HOSE CLAMP INSERT 1/2"
8	10655PP	1			HOSE CLAMP TOP PLATE 1/2"
9	15659PP			2	5/16"-18 X 3 1/2" LG HHCS
10	10974PP		1		5/8" X 6 1/2" LG HITCH PIN
11	1101PP		1	1	HYD HOSE 1/4" X 14-1/2" LG 6FJX TO 6FJX
12	1111PP		4		1 1/4" DIA X 1 9/16" LG BUSH
13	1144PP	1		1	ELBOW 90 MALE 6MJ TO 8MB
14	1145PP	3	2	5	ADAPTER 6MJ TO 8MB
15	12293PP		1	1	HYD HOSE 1/4" X 23-1/2" LG 6FJX TO 6FJX
16	12339PP			1	HYD HOSE 1/4" X 31" LG 6FJX TO 6FJX
17	13008PP			1	CUL CROSS OVER RELIEF
18	13378PP		9		3/8"-16 X 1" LG HHSFS GR8
19	14172PP		4	3	HYD HOSE 1/4" X 29 1/2" LG 6FJX TO 6FJX
20	14234VW		1		CLG JAW FRAME WDT
21	14235VW		1		CLG JAW WIDE WDT
22	14236VW		1		CLG JAW NARROW WDT
23	14237VW		1		CLG JAW LINK WDT
24	14239VW		1		1-1/4" PIN WDT 8" LG
25	14240VW		1		1-1/4" PIN WDT 6-1/4" LG
26	14241VW		1		CLG LINK WDT
27	14245VW		1		CLG HITCH RECEIVER

Compact Log Grapple (CLG) Parts List Cont.

ITEM	PART NO.	QUANTITIES			DESCRIPTION
		MANUAL	ROTATOR-ELEC	ROTATOR-HYD	
28	14290PP		1	1	3 TON ROTATOR
29	14291PP		1		MANIFOLD ROTATOR HOLDING VALVE
30	14294PP			4	ADAPTER, 6MJ TO 10MB
31	14471VW	1		1	CLG MANUAL MANIFOLD PLATE WDT
32	14472VW		1		CLG ROTATOR MANIFOLD PLATE WDT
33	14791PP		2	2	ADAPTER 1/4 BSPP TO 6MJ
34	14792PP		4	4	ADAPTER 3/8 BSPP TO 6MJ
35	14794PP		4	4	5/8"-11 X 2 1/2" LG CB
36	15316VW	1			CLG S QT FRAME WDT (CII)
	14231VW				CLG A QT FRAME WDT (ASV MINI)
	14232VW				CLG B QT FRAME WDT (BOBCAT MINI)
37	15317VW		1	1	CLG ROTATE GUARD WDT
38	15318VW	1			CLG ROTATE LINK WDT
39	15319VW	2			1-1/4" PIN WDT 9-5/8" LG
40	15322VW	2			1" PIN WDT 5" LG
41	15323VW	1			1" PIN WDT 3-1/2" LG
42	15327VP		1	1	CLG ROTATOR CINCH REAR
43	15336VP	1			CLG ROTATE WASHER
44	15338VP	1			1" PLATED COLLAR 15/16" LG
45	15339VP	1			CLG JAW WASHER
46	15345PP	1			1.5" THRUST WASHER
47	15346PP	1			1"-8 X 2 1/4" LG HHCS
48	15347PP	1		1	TEE BRANCH 6MB TO 6MJ-6MJ
49	15348VW		1	1	25MM PIN WDT 3-1/2" LG
50	15503PP	1			HYD HOSE 3/8" X 45" LG 6FJX TO 6FJX W/ 28"
51	15504PP	1			HYD HOSE 3/8" X 56" LG 6FJX TO 6FJX W/ 36"

Compact Log Grapple (CLG) Parts List Cont.

ITEM	PART NO.	QUANTITIES			DESCRIPTION
		MANUAL	ROTATOR-ELEC	ROTATOR-HYD	
52	15538PP		2	2	1/4 BSPP EXTENSION
53	15539PP		4	4	M8-1.25 X 30MM LG SHCS
54	6140PP		2	2	3/8"-16 TOP LOCK FLANGE NUT
55	6723PP		1		3/16" X 1" LG LYNCH PIN
56	6997PP		2		ELBOW 90 6MJ TO 6MB
57	7246PP	1			1"-8 TOP LOCK NUT
58	7669PP	1		1	MULTI PURPOSE HOLDING VALVE
59	7670PP	3			5/16"-18 X 2" LG HHCS
60	7672PP	2		2	5/16"-18 TOP LOCK FLANGE NUT
61	7788PP		2		3/8"-16 NUT
62	7796PP		6		ADAPTER 6MJ-6MB
63	7849PP		3		3/8"-16 X 1" LG HHCS
64	7957PP		4	4	5/8" SAE FLAT WASHER HARDENED
65	8494PP	1	1	2	COUPLER FEMALE 8FB
66	8495PP	1	1	2	COUPLER MALE 8FB
A 67	ELCACC-HRE		1		12V ACCESSORY PLUG (LATCH)
A 68	14549VA		1		HARNESS CUL LOG GRAPPLE

A - Item Not Shown

Bolt Torque Chart

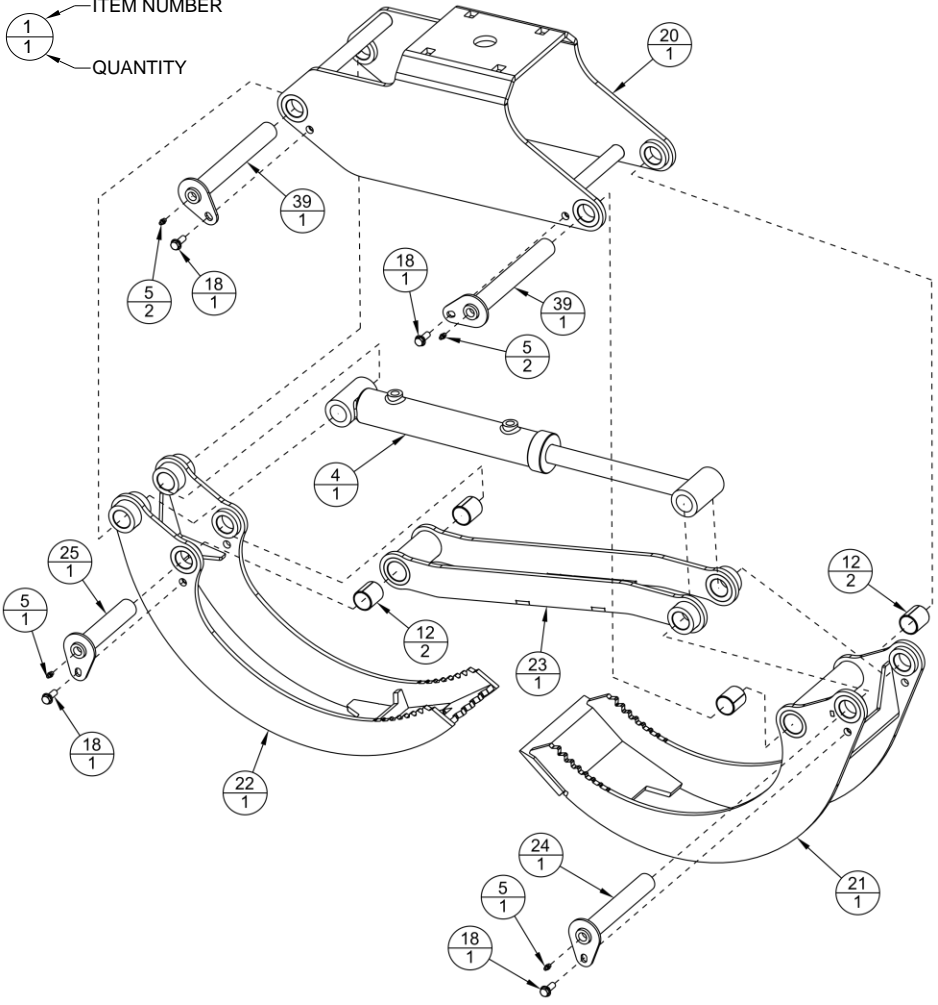
SIZE	GRADE 5		GRADE 8		SHCS*	
	COARSE	FINE	COARSE	FINE	COARSE	FINE
1/4"	6	7	9	10	10	12
5/16"	13	15	18	20	22	24
3/8"	23	26	33	37	38	43
7/16"	37	41	52	58	61	68
1/2"	57	64	80	90	93	105
9/16"	82	91	115	128	134	150
5/8"	113	128	159	180	179	202
3/4"	200	223	282	315	317	354

*SHCS—Socket Head Cap Screw

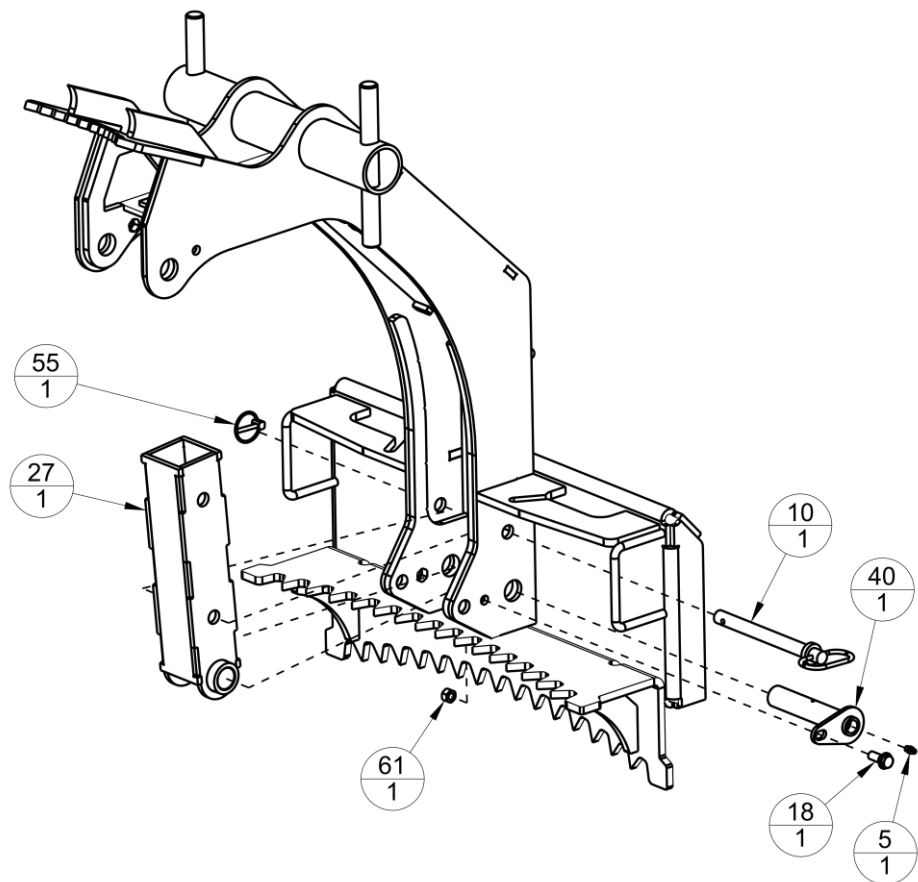
Values are in ft.-lb. and are recommended unless otherwise noted.

Common Jaw Assembly

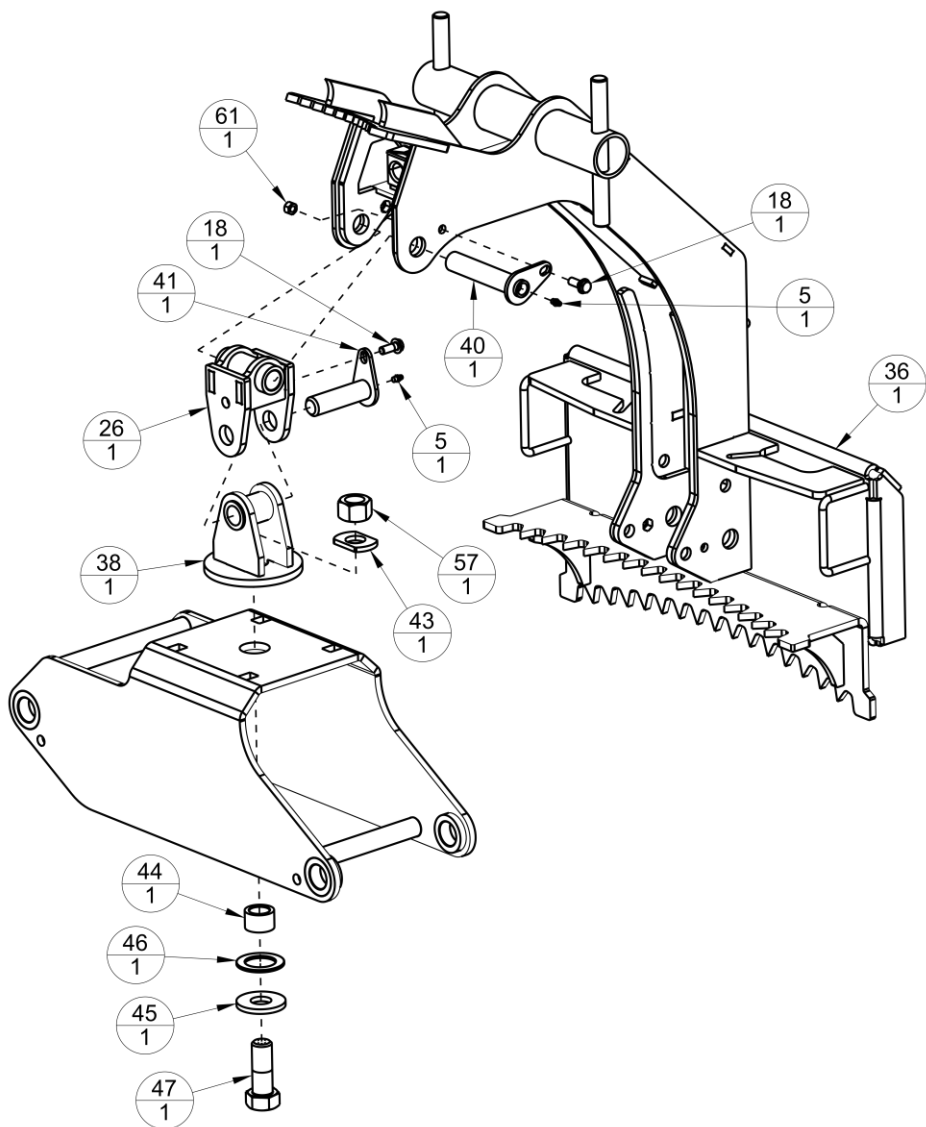
ITEM NUMBER
QUANTITY



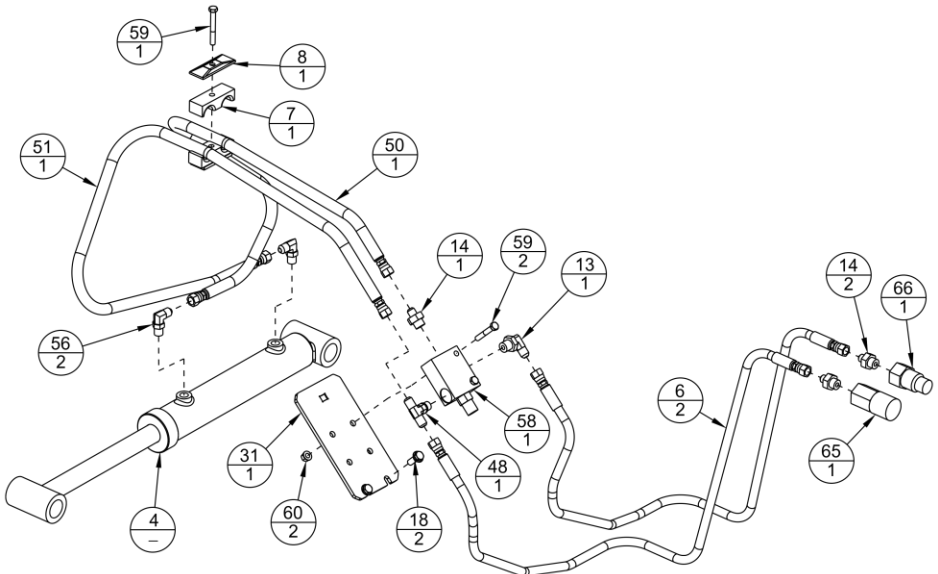
Common Hitch Assembly



Manual Rotate Link Assembly



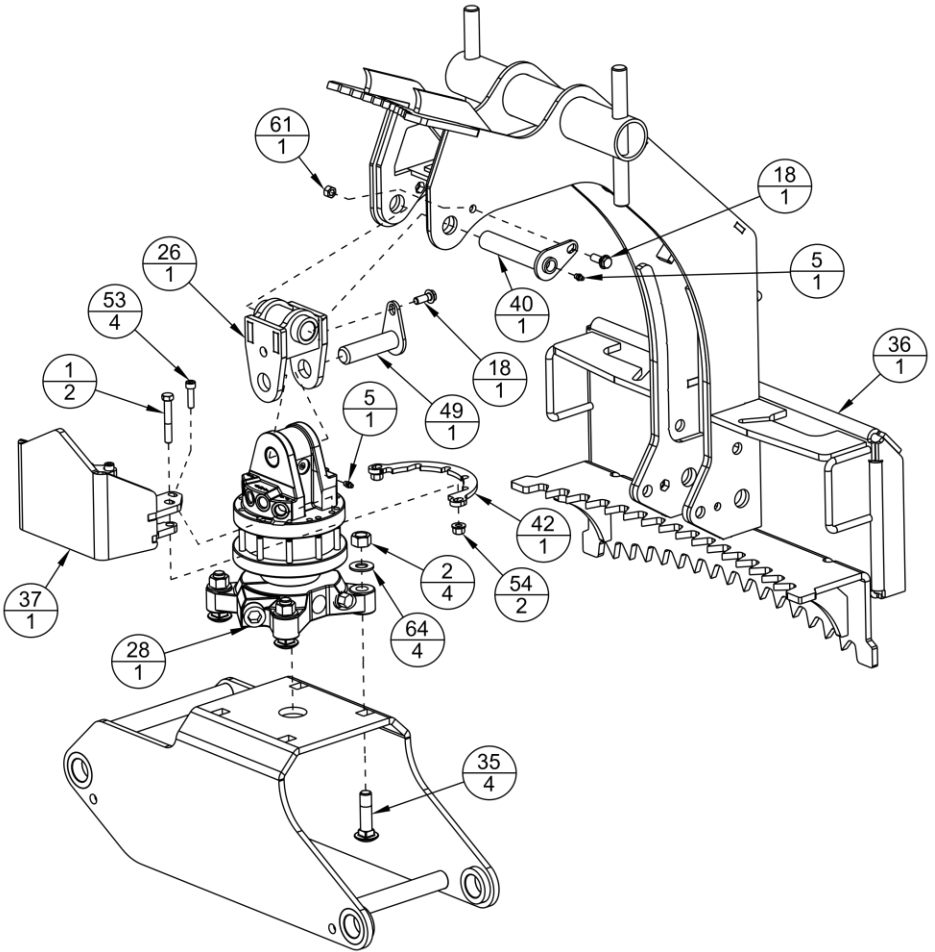
Manual Rotate Hydraulic Assembly



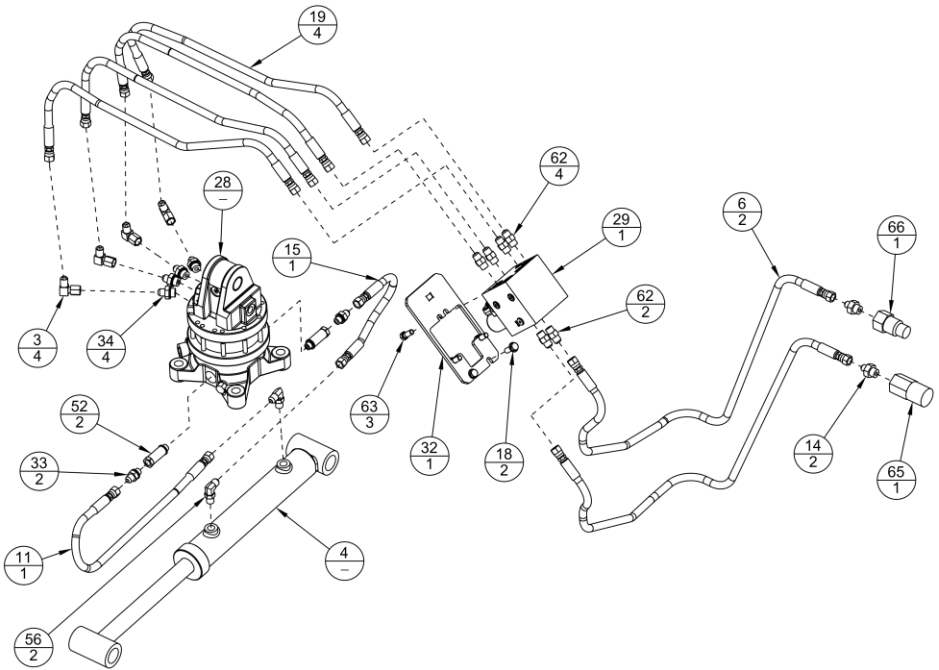
Hose	Port 1	Port 2
10489PP Wrapped 68"	Male Coupler	Manifold Elbow
10489PP Wrapped 68"	Female Coupler	Manifold Tee (Rear)
15503PP Plastic Wrap 45"	Manifold Straight	Cylinder Rod Elbow
15504PP Plastic Wrap 56"	Manifold Tee (Front)	Cylinder Barrel Elbow

NOTE: Plastic wrap should extend from cylinder to 1" past hose clamp.

Rotator Link Assembly



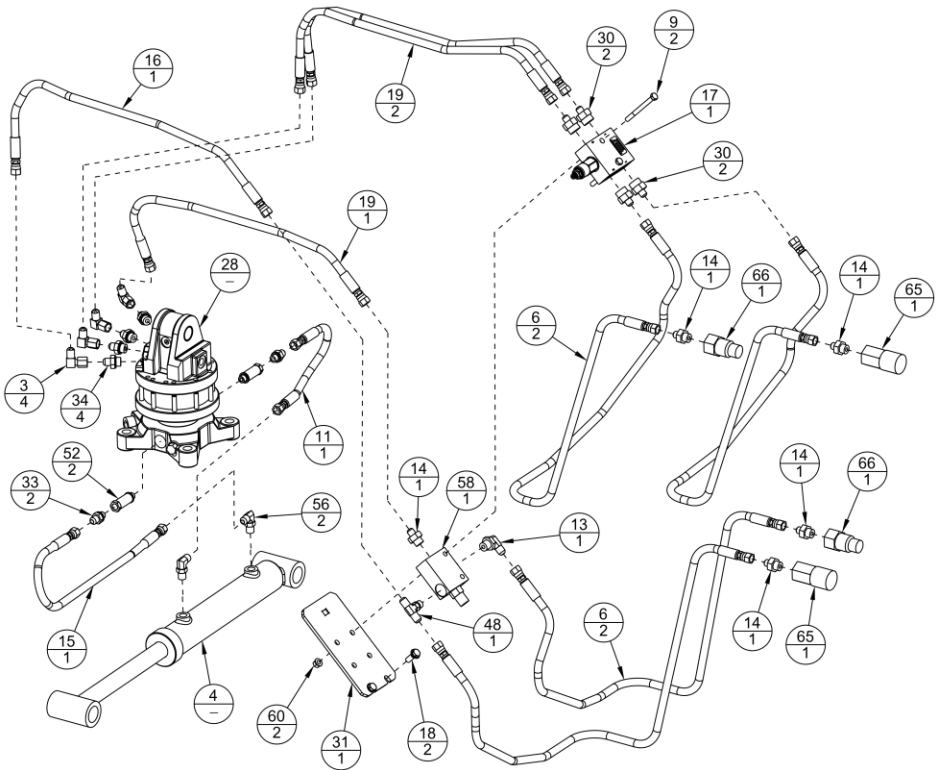
Hydraulic-Electric Rotator Assembly



Hose	Port 1	Port 2
10489PP Wrapped 68"	Male Coupler	Manifold Port VB
10489PP Wrapped 68"	Female Coupler	Manifold Port VA
14172PP 29-1/2"	Manifold Port 1A	Rotator $\triangleleft \triangleright$
14172PP 29-1/2"	Manifold Port 1B	Rotator $\triangleright \triangleleft$
14172PP 29-1/2"	Manifold Port 2A	Rotator $\triangleleft R$
14172PP 29-1/2"	Manifold Port 2B	Rotator $R \triangleright$
12293PP 23-1/2"	Rotator Bot Port Near Bolt	Cylinder Barrel Elbow
1101PP 14-1/2"	Rotator Bot Port NOT Near Bolt	Cylinder Rod Elbow

NOTE: Crossover hoses between manifold and rotator before the rope bollard tube.

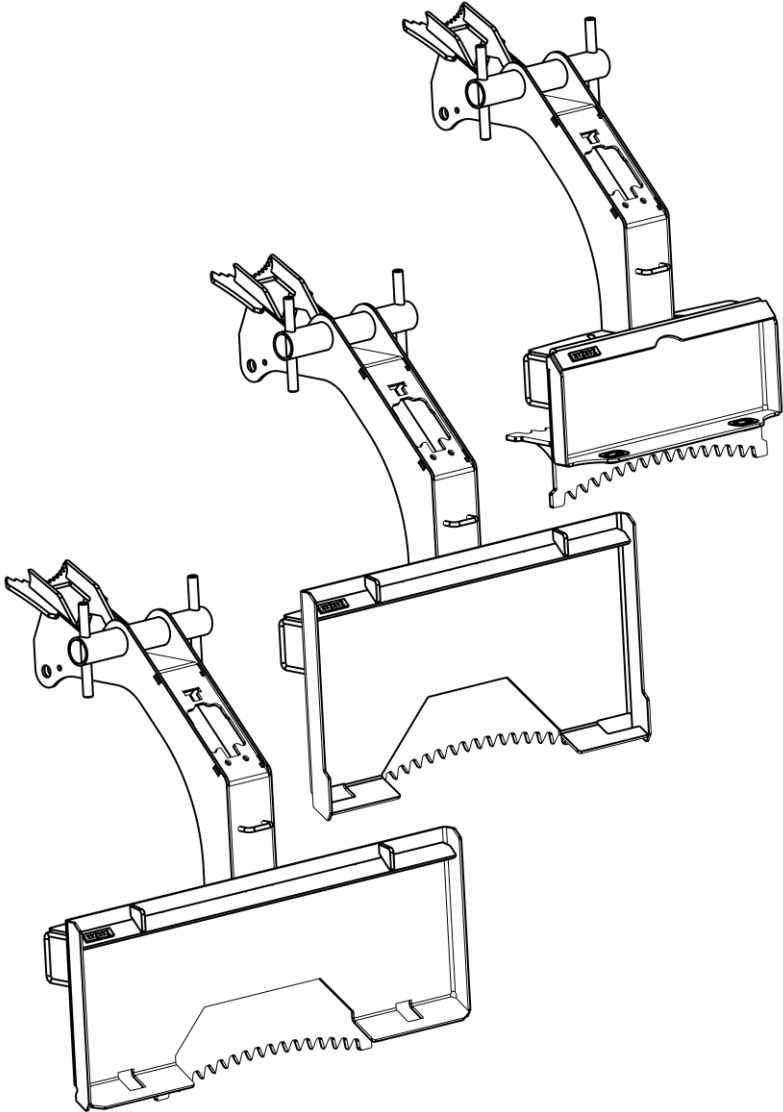
Hydraulic-Hydraulic Rotator Assembly



Hose	Port 1	Port 2
10489PP Wrap 68"	Right Male Coupler	Holding Valve Elbow
10489PP Wrap 68"	Right Female Coupler	Holding Valve Tee (Rear)
14172PP 29-1/2"	Holding Valve Straight	Rotator $\triangleleft \triangleright$
12339PP 31"	Holding Valve Tee (Front)	Rotator $\triangleright \triangleleft$
14172PP 29-1/2"	Crossover Relief Front 1	Rotator $\triangleleft R$
14172PP 29-1/2"	Crossover Relief Front 2	Rotator $R \triangleright$
12293PP 23-1/2"	Rotator Bot Port Near Bolt	Cylinder Barrel Elbow
1101PP 14-1/2"	Rotator Bot Port NOT Near Bolt	Cylinder Rod Elbow
10489PP Wrap 68"	Left Male Coupler	Crossover Relief Rear 2
10489PP Wrap 68"	Left Female Coupler	Crossover Relief Rear 1

NOTE: Crossover hoses between manifolds and rotator before the rope bollard tube.

Frame Mount Options



- Top → Standard mini mount may be plumbed left or right.
- Middle → Bobcat mini mount is plumbed left.
- Bottom → ASV mini mount is plumbed left. —