



HUSTLER®

2018 PRODUCT LINE





WE MAKE THE BEST... THEN, WE MAKE IT BETTER

Hustler's commitment to purposeful innovation gives you everything you could ask for in a mower, and so much more.

In 1964, we introduced the Hustler, the world's first zero-turn mower. The Hustler allowed our customers to tackle their lawns in record time, with unparalleled precision. This easy-to-handle, highly maneuverable innovation revolutionized the mower industry, and we've been committed to making innovative outdoor power equipment ever since.

WHY HUSTLER IS A BETTER MOWER

SMOOTHTRAK™ STEERING

It's what makes driving a Hustler a better experience. Our mowers have the smoothest and most precise steering. You'll glide around obstacles and make zero-radius turns with ease.



SMOOTHTRAK™ STEERING

PATENTED PARK BRAKE

Simple, convenient, system that automatically disengages/engages the parking brake when you close/open the steering levers. No extra park brake lever to worry about.



PATENTED PARK BRAKE

TOUGH FRAME

Heavy-duty fabricated steel frame provides unmatched durability.

SIMPLE DESIGN

Fewer parts means fewer problems and easier service.

HEAVY-DUTY DECK

Our decks are engineered to provide a clean, finished cut every time, with even distribution of grass clippings.

LOW CENTER OF GRAVITY

A reduced profile translates into superior handling and stability.



HEAVY-DUTY DECK

HUSTLER'S 2018 RESIDENTIAL LINE

Maneuver around life's
most difficult obstacle...time.

With Hustler Turf, we give you the power,
strength and speed to mow faster,
better, smarter, and use the time you
save to do something you love.



RAPTOR®

LEGENDARY HUSTLER PERFORMANCE AND ENGINEERING
IN AN ENTRY-LEVEL ZERO-TURN MOWER.

↑ IDEAL FOR YARDS UP TO ONE ACRE.



LIMITED
WARRANTY

3 YEAR
| **NO**
| HOUR LIMIT

RESIDENTIAL

52" Raptor pictured

CUTTING WIDTHS

Side-discharge: 36", 42" & 52"

SPEED (FORWARD)

6.5 mph

ENGINE CONFIGURATIONS

Kawasaki: 21.5hp FR651
23hp FR691V

Kohler: 19hp 6600 Series HD
22/24hp 7000 Series HD

FUEL CAPACITY

3 US gallons

DECK HEIGHT

Hand-operated: 1.5" to 4.5" (1/2" increments)

FRONT TIRES

11" x 4"

DRIVE SYSTEM

Hydro-Gear EZT

DRIVE TIRES

36": 18" x 7" **42/52":** 18" x 8.5"

RAPTOR[®] LIMITED

FEATURES UPGRADES LIKE BOLSTERED SEAT WITH ARMRESTS, LARGE TIRES, FLEX FORKS, HOUR METER.

↑ IDEAL FOR YARDS UP TO ONE ACRE.



LIMITED
WARRANTY

3 YEAR | **NO**
HOUR LIMIT

RESIDENTIAL

CUTTING WIDTHS

Side-discharge: 52"

SPEED (FORWARD)

6.5 mph

ENGINE CONFIGURATIONS

Kawasaki: 23hp FR691V

FUEL CAPACITY

3 US gallons

DECK HEIGHT

Hand-operated: 1.5" to 4.5" (1/2" increments)

FRONT TIRES

11" x 5"

DRIVE SYSTEM

Hydro-Gear EZT

DRIVE TIRES

18" x 10.5"

RAPTOR[®] SD

**MORE FEATURES, MORE MUSCLE,
MAKES SMALL WORK OUT OF BIG JOBS.**

↑ **IDEAL FOR YARDS UP TO THREE ACRES.**



LIMITED
WARRANTY

3 YEAR | **300**
HOUR

CUTTING WIDTHS

Side-discharge: 36", 42", 48", 54" & 60"

SPEED (FORWARD)

7.5 mph

ENGINE CONFIGURATIONS

Kawasaki: 23hp FR691V
24hp FR730

Kohler: 22/25/26hp
7000 Series PRO

FUEL CAPACITY

3 US gallons

DECK HEIGHT

Foot-operated: 1.5" to 4.5" (1/4" increments)

FRONT TIRES

36/42/48": 13" x 5" **54/60":** 13" x 6.5"

DRIVE SYSTEM

Hydro-Gear ZT2800
Serviceable w/ spin-on filters

DRIVE TIRES

36/42": 20" x 6.5" **48":** 20" x 8" **54/60":** 20" x 12"

RAPTOR[®] FLIP-UP

PUSH A BUTTON TO RAISE, LOWER, OR ADJUST DECK HEIGHT.

✂️ CLEANING AND CHANGING BLADES WAS NEVER SO EASY.



LIMITED
WARRANTY

4 YEAR | **400**
HOUR

CUTTING WIDTHS

Side-discharge: 48" & 54"

SPEED (FORWARD)

7 mph

ENGINE CONFIGURATIONS

Kohler: 25hp 7000 Series HD

FUEL CAPACITY

3 US gallons

DECK HEIGHT

Electric/Hydraulic: 1.5" to 4.5" (1/2" increments)

FRONT TIRES

9" x 3.5"

DRIVE SYSTEM

Hydro-Gear ZT2800
Serviceable w/ spin-on filters

DRIVE TIRES

48": 20" x 8" **54":** 20" x 10"

FASTRAK[®]

HUSTLER'S TOP-OF-THE-LINE RESIDENTIAL ZERO-TURN
THAT OFFERS COMMERCIAL GRADE PRODUCTIVITY.

↑ IDEAL FOR RESIDENTIAL ESTATES.



LIMITED
WARRANTY

4 YEAR | **400**
HOUR

LIMITED
LIFETIME WARRANTY
FRAME & LEADING EDGE OF DECK

CUTTING WIDTHS

Side-discharge: 48", 54" & 60"

Rear-discharge: 48" & 54"

SPEED (FORWARD)

8 mph

ENGINE CONFIGURATIONS

Kawasaki: 23hp FR691V
24hp FR730V

Kohler: 27hp 7500 EFI

FUEL CAPACITY

5 US gallons

DECK HEIGHT

Foot-operated: 1.5" to 4.5" (1/4" increments)

FRONT TIRES

48/48"RD: 13" x 5"

54/54RD/60": 13" x 6.5"

DRIVE SYSTEM

Commercial-duty Hydro-Gear ZT3100
Serviceable w/ spin-on filters

DRIVE TIRES

48/48"RD: 22" x 9.5"

54/54RD/60": 22" x 11"

HUSTLER'S 2018 COMMERCIAL LINE

Zero Compromises.

Hustler Turf's commercial zero-turns strike the perfect balance between performance, reliability and productivity...giving customers the confidence to take on any job, any time.



FASTRAK[®] SDX

STRONGER, FASTER, TOUGHER, WITH COMMERCIAL-GRADE TRANSMISSIONS, UPGRADED CUSTOM SEAT AND MORE.



LIMITED
WARRANTY

4 YEAR | **1000**
HOUR

LIMITED
LIFETIME WARRANTY
FRAME & LEADING EDGE OF DECK

CUTTING WIDTHS

Side-discharge: 48", 54" & 60"

SPEED (FORWARD)

9 mph

ENGINE CONFIGURATIONS

Kohler: 23hp Confidant ZT730 w/ Commercial Durability Pkg.
25hp Confidant ZT740 w/ Commercial Durability Pkg.

FUEL CAPACITY

5 US gallons

DECK HEIGHT

Foot-operated: 1.5" to 4.5" (1/4" increments)

FRONT TIRES

48": 13" x 5" **54/60":** 13" x 6.5"

DRIVE SYSTEM

Commercial-duty Hydro-Gear ZT3400
Serviceable w/ spin-on filters

DRIVE TIRES

48": 22" x 9.5" **54/60":** 23" x 11"

X-ONE®

COMMERCIAL ZERO-TURN MOWER BUILT FOR ALL-DAY,
EVERY DAY PERFORMANCE.

LIMITED
WARRANTY

2 YEAR | **NO**
YEAR | HOUR LIMIT

OR

LIMITED
WARRANTY

5 YEAR | **500**
YEAR | HOUR



LIMITED
LIFETIME WARRANTY
FRAME & LEADING EDGE OF DECK

CUTTING WIDTHS

Side-discharge: 52", 60" & 72"

Rear-discharge: 54" & 60"

SPEED (FORWARD)

10.5 mph

ENGINE CONFIGURATIONS

Kawasaki: 23.5hp FX730

Kohler: 29hp 824 EFI

27hp FX850

FUEL CAPACITY

11.7 US gallons

DECK HEIGHT

Foot-operated: 1" to 5.5" (1/4" increments)

FRONT TIRES

13" x 6.5"

DRIVE SYSTEM

Parker unitized 12cc/rev pump

15.9ci/rev wheel motors

DRIVE TIRES

52/54"RD: 24" x 9.5"

60/60RD/72": 24" x 12"

SUPER Z[®]

HIGH-PERFORMANCE ZERO-TURN WITH UNSURPASSED STRENGTH, RELIABILITY, SPEED, PRODUCTIVITY, AND A WARRANTY TO MATCH.

LIMITED WARRANTY

2 YEAR | **NO** HOUR LIMIT

OR

LIMITED WARRANTY

5 YEAR | **500** HOUR



LIMITED
LIFETIME WARRANTY
FRAME & LEADING EDGE OF DECK

CUTTING WIDTHS

Side-discharge: 54", 60", 66" & 72"

Rear-discharge: 60" & 72"

SPEED (FORWARD)

14 mph

ENGINE CONFIGURATIONS

Kawasaki: 27hp FX850

35hp FX1000

Kohler: 33hp 824 EFI

FUEL CAPACITY

11.7 US gallons

DECK HEIGHT

Foot-operated: 1" to 5.5" (1/4" increments)

FRONT TIRES

13" x 6.5"

DRIVE SYSTEM

Hydro-Gear 21cc pumps,
Parker TG high torque wheel motors,
3 gal. reservoir, oil cooler w/ fan & hot oil shuttle.

DRIVE TIRES

54": 24" x 9.5" **60/60RD/66/72/72"RD:** 24" x 12"

SUPER Z[®] HYPERDRIVE

INDUSTRY-LEADING HYPERDRIVE[®] SYSTEM & VX4[®] DECK TECHNOLOGY DELIVER UNRIVALED PERFORMANCE.



LIMITED WARRANTY

3 YEAR **NO**
HOUR LIMIT

OR

LIMITED WARRANTY

5 YEAR **500**
HOUR

5 YEAR ENGINE WARRANTY
— VANGUARD ONLY —

5 YEAR **3000** HOUR **PUMPS AND MOTORS**

— LIMITED —
LIFETIME WARRANTY
FRAME & LEADING EDGE OF DECK

CUTTING WIDTHS

Side-discharge: 60", 66" & 72"

Rear-discharge: 60" & 72"

SPEED (FORWARD)

16 mph

ENGINE CONFIGURATIONS

Vanguard: 36hp BIG BLOCK™

37hp BIG BLOCK™ EFI

FUEL CAPACITY

11.7 US gallons

DECK HEIGHT

Foot-operated: 1" to 5.5" (1/4" increments)

FRONT TIRES

13" x 6.5"

DRIVE SYSTEM

HyperDrive industrial Danfoss slipper piston pumps, Parker TG high torque wheel motors, 3 gal. reservoir, oil cooler w/ 9" fan & hot oil shuttle.

DRIVE TIRES

26" x 12"

HUSTLER Z DIESEL

THE POWER AND PRECISION OF A HUSTLER,
THE STAMINA OF A DIESEL.



LIMITED
WARRANTY

2 YEAR | **NO**
HOUR LIMIT

OR

LIMITED
WARRANTY

5 YEAR | **500**
HOUR

LIMITED
LIFETIME WARRANTY
FRAME & LEADING EDGE OF DECK

CUTTING WIDTHS

Side-discharge: 60" & 72"

Rear-discharge: 60" & 72"

SPEED (FORWARD)

12 mph

ENGINE CONFIGURATIONS

Shibaura: 25hp 3cyl. diesel

FUEL CAPACITY

14.4 US gallons

DECK HEIGHT

Foot-operated: 1" to 5.5" (1/4" increments)

FRONT TIRES

13" x 6.5"

DRIVE SYSTEM

Hydro-Gear 21cc pumps,
Parker TG high torque wheel motors,
1.3 gal. reservoir, oil cooler w/ fan & hot oil shuttle.

DRIVE TIRES

24" x 12"

SUPER 104

A WIDE-AREA MOWER WITH THE MANEUVERABILITY OF A ZERO-TURN.

© UP TO 84 ACRES IN 8 HOURS AT 10 MPH.



LIMITED WARRANTY

2 YEAR | **NO** HOUR LIMIT

OR

LIMITED WARRANTY

5 YEAR | **500** HOUR

LIMITED LIFETIME WARRANTY ON THE FRAME

CUTTING WIDTHS

Rear-discharge: 104"

SPEED (FORWARD)

11 mph

ENGINE CONFIGURATIONS

Vanguard: 36hp BIG BLOCK™
37hp BIG BLOCK™ EFI

FUEL CAPACITY

12 US gallons

DECK HEIGHT

Hydraulic: 1" to 5.5" (1/4" increments)

FRONT TIRES

15" x 6"

DRIVE SYSTEM

HyperDrive industrial Danfoss slipper piston pumps, Parker TG high torque wheel motors, 3 gal. reservoir, oil cooler w/ 9" fan & hot oil shuttle.

DRIVE TIRES

26" x 12"

SUPER S™

STAND-ON WITH EXCEPTIONAL COMPACT STANCE
FOR TIGHT SPACES AND TRAILERING.

LIMITED
WARRANTY

2 YEAR **NO**
YEAR HOUR LIMIT

OR

LIMITED
WARRANTY

5 YEAR **500**
YEAR HOUR



CUTTING WIDTHS

Side-discharge: 36", 48", 52" & 60"

SPEED (FORWARD)

36": 8 mph **48/52/60":** 9 mph

ENGINE CONFIGURATIONS

Kawasaki: 15hp FS541V
22hp FX691V
23.5hp FX730V

Kohler: 23hp 824 EFI
25hp 824 EFI

FUEL CAPACITY

36": 6.5 US gallons **48/52/60":** 7.3 US gallons

DECK HEIGHT

Hand-operated: 1.5" to 5.5" (1/4" increments)

FRONT TIRES

36": 11" x 4" **48/52/60":** 13" x 5"

DRIVE SYSTEM

36":
Hydro-Gear 10cc pump &
Parker TL0195 wheel motor

48/52/60":
Hydro-Gear 12cc pump &
Parker TL0240 wheel motor

DRIVE TIRES

36": 18" x 8.5" **48/52":** 20" x 10" **60":** 20" x 12"

TRIMSTAR®

INNOVATIVE AND EASY-TO-USE WALK-BEHIND
FEATURING PATENTED H-BAR® STEERING.



LIMITED
WARRANTY

2 YEAR | **NO**
HOUR LIMIT

LIMITED
LIFETIME WARRANTY
LEADING EDGE OF DECK

CUTTING WIDTHS

Side-discharge: 36", 48" & 54"

SPEED (FORWARD)

6.3 mph

ENGINE CONFIGURATIONS

Kawasaki: 14.5hp FS481 18.5hp FS600
15hp FS541 23hp FS691 (electric start)

FUEL CAPACITY

3.4 US gallons

DECK HEIGHT

Hand-operated: 1.5" to 4.5" (1/4" increments)

FRONT TIRES

11" x 4"

DRIVE SYSTEM

Hydro-Gear ZT2800
Serviceable w/ spin-on filters

DRIVE TIRES

36": 18" x 6.5" **48/54":** 20" x 10"

BAGGERS



NON-POWERED BAGGER

Easy-on, easy-off hopper assemblies. The bagger holds 5.4 bushels. Available on all Raptor family mowers.



2-BAG POWERED BAGGER

Easy-on, easy-off blower and hopper assemblies. Holds 7.2 bushels. Available on FasTrak and FasTrak SDX.



SIDE BAGGER

Easy-on, easy-off bagger has a 3.5 bushel capacity. Available on the FasTrak, FasTrak SDX, X-ONE, and Super S.



3-BAG POWERED BAGGER

Easy-on, easy-off blower and hopper assemblies. Holds 12 bushels. Available on X-ONE, Super Z, and HyperDrive.



SIDE BAGGER

Easy-on, easy-off bagger has a 3 bushel capacity. Available on the X-ONE, Super S and TrimStar.



BACVAC

Electric accuated DFS bagger system. Easy-on, easy-off versatility with a 10 bushel capacity. Available on X-ONE, Super Z, and HyperDrive.

ZERO-TURN MOWER ACCESSORIES



ENGINE GUARD

Provides protection to the engine and adds to the great look of the machine.



SEMI-PNEUMATIC TIRES

Resists flats better.



STEERING EXTENSION KIT

Allows height adjustment of steering levers to make your mowing experience as comfortable as possible.



LIGHT KIT

Extends your productivity into the late hours. Kit contains two high-quality 12-volt lights with a switch that mounts in the instrument panel.



FLEX FORKS

Improves operator comfort and provides a more even cut, especially over uneven terrain or at higher speeds.



MULCH KIT

Recycles clippings back into the soil to reclaim nutrients for your lawn.



HOURLY METER

Helps keep track of service intervals.



SEAT ISOLATOR

Provides comfort in the roughest mowing conditions.



STRIPE KIT

Helps provide a professional manicured finish to your lawn. Depending on the mower, rubber flap or steel cylinder options are available.



ARMREST KIT

Provides more comfort while you mow.



Visit hustlerturf.com

for a complete listing and visuals of all attachments.

HUSTLER'S 2018 SIDE-BY-SIDES

The Hustler MDV™ with patented LevelLift™ bed technology is a tough, precision-built side-by-side that combines the industry's most popular features with the revolutionary ability to lift, lower and dump its cargo. We call it the MDV (Maximum Duty Vehicle) for the simple fact that you won't find a more rugged, durable or versatile vehicle anywhere.



HUSTLER MDV™

WHEN YOU'VE GOT SERIOUS WORK TO DO.

⚙️ OFFERING PATENTED LEVELIFT™ BED TECHNOLOGY.

LIMITED
WARRANTY

1
YEAR



Pictured with optional accessories

ENGINE CONFIGURATIONS

Kohler: KDW 1003 (Diesel)

TOWING CAPACITY

1650 lbs

DRIVETRAIN

2WD/AWD

CARGO BOX CAPACITY

MDV: 1200 lbs

MDV with LevelLift: 750 lbs

SPEED (FORWARD)

MDV: 37 mph

MDV with LevelLift: 36mph

CARGO BED DIMENSIONS

45.9" x 58.2" x 11.5"

FUEL CAPACITY

14 US gallons

TIRES & WHEELS

Front & Rear: 25" x 10"-12"

UTILITY VEHICLE

ACCESSORIES



*not on pictured unit

ROOF

Provides year-round weather protection to operator and passenger.

DOORS

Provides comfort in inclement weather.

FRONT WINDSHIELD

Blocks wind, dust and other weather elements.

SLIDING REAR WINDOW

Gives access to vehicle's bed and keeps elements from blowing in through rear of cab.

WIPERS

Helps resist rain, snow and ice buildup on windshield.

HEATER/DEFROST

Keeps operator warm on a cold winter day.

SIDE MIRRORS*

Offers operator expanded visibility.

REAR VIEW MIRROR*

Expands operator visibility.

HITCH/WINCH MOUNT (FRONT)

Pulls tough loads and secures vehicle to trailer.

HITCH/WINCH MOUNT (REAR)*

Available with standard bed model.

BRUSH GUARD

Protects the front of vehicle.

SKID PROTECTION KIT

Protects MDV underside.

A-ARM GUARDS

Provides protection for front suspension components.

WORK LIGHTS

Provides a wide range of light (ideal for tasks at night).

TAIL LIGHTS

Improves vehicle visibility and safety.

BEACON KIT*

Alerts others of presence and reduces risk of an accident.

440 MAG TIRE (25" X 10" - 12")

Aggressive bar tread for rugged terrain and extreme conditions.



Visit hustlerturf.com

for a complete listing and visuals of all attachments.

HUSTLERTURF.COM

YOUR RESOURCE FOR EVERYTHING HUSTLER

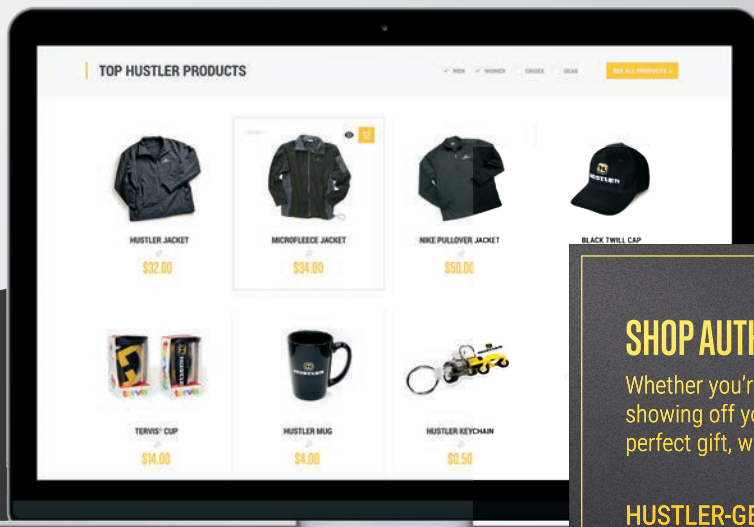
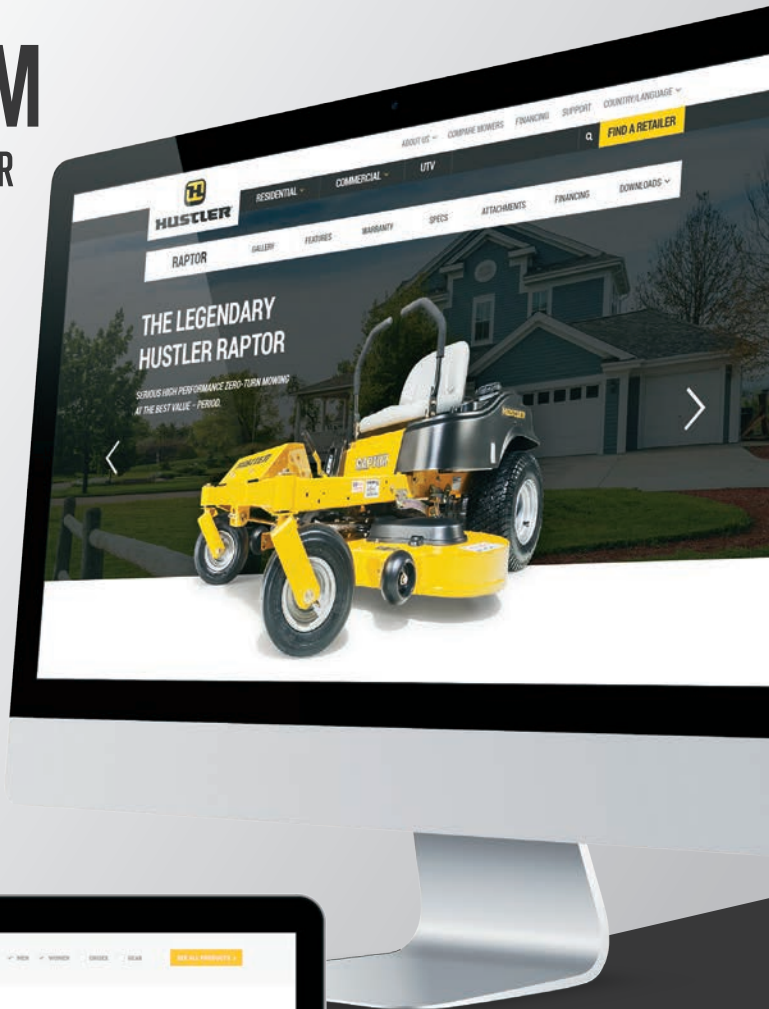
TRYING TO DECIDE WHICH HUSTLER MOWER IS THE BEST FOR YOU?

Visit hustlerturf.com to find the Hustler product that's perfect for you.

SITE FEATURES

- ▶ Product videos of our mowers in action
- ▮ Detailed specifications on all our products
- 🔧 A compare mowers tool
- 💰 Information on financing options

And so much more!



SHOP AUTHENTIC HUSTLER GEAR

Whether you're outfitting a landscape crew, showing off your Hustler pride, or looking for that perfect gift, we've got you covered.

[HUSTLER-GEAR.HUSTLERTURF.COM](https://hustler-gear.hustlerturf.com)



© 2018 HUSTLER TURF EQUIPMENT

SPECIFICATIONS SUBJECT TO CHANGE WITHOUT NOTICE.
VISIT WWW.HUSTLERTURF.COM FOR THE MOST CURRENT SPECIFICATIONS.
ADV 1287 12-1

HUSTLERTURF.COM