



# SERVICE PARTS LIST

**BULLETIN NO.**  
**54-20-0025**

<b>SPECIFY CATALOG NO. AND SERIAL NO. WHEN ORDERING PARTS</b>		REVISED BULLETIN	DATE
<b>M18 FUEL™ Concrete Pencil Vibrator</b>			Aug. 2021
<b>CAT. NO. 2910-20 (4' Whip)</b>	STARTING SERIAL NO.	<b>M24A</b>	
<b>2911-20 (8' Whip)</b>		<b>M25A</b>	
		WIRING INSTRUCTION	
		<b>SEE PAGE 2</b>	

**EXAMPLE:**  
Component Parts (Small #) Are Included  
When Ordering The Assembly (Large #).

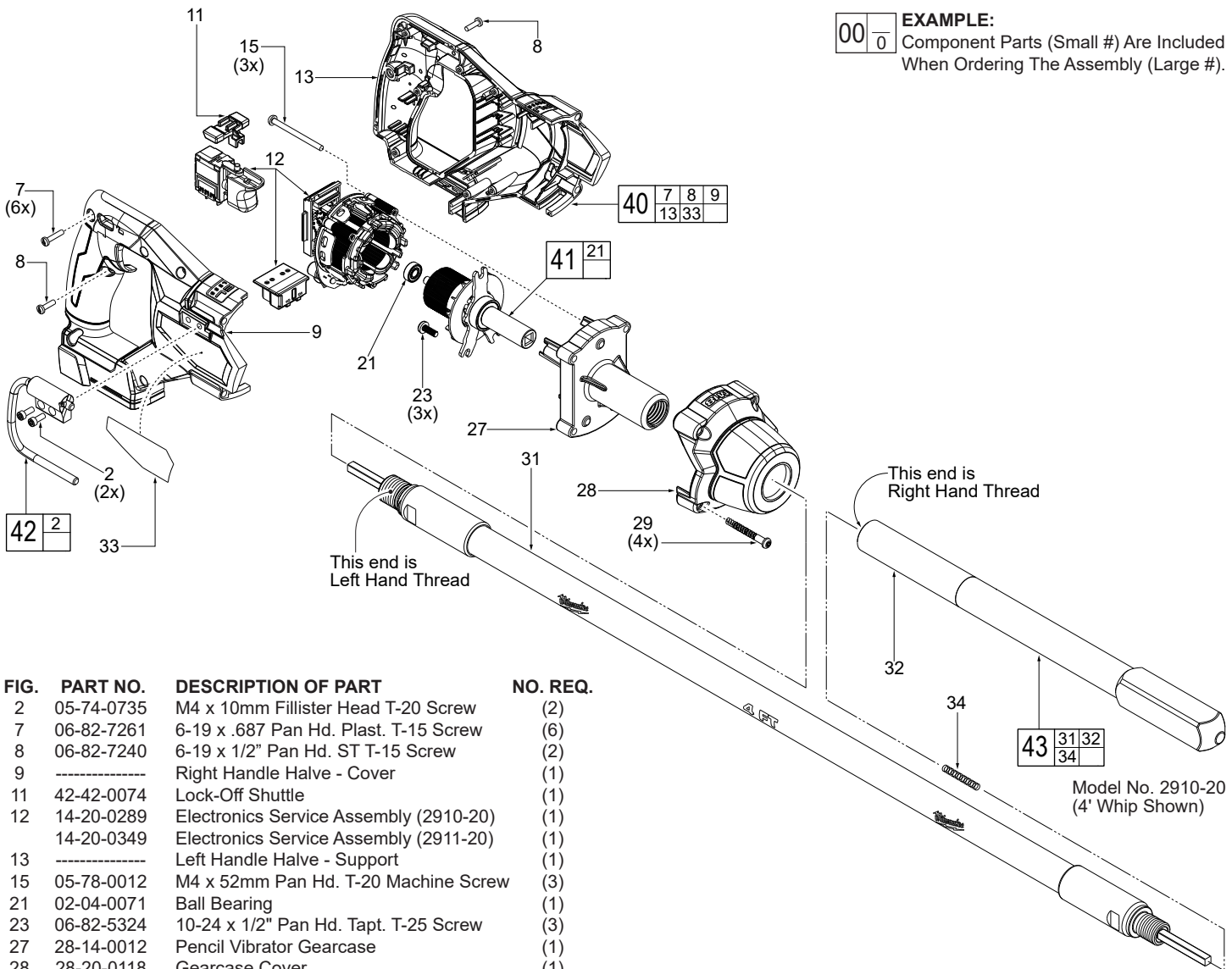
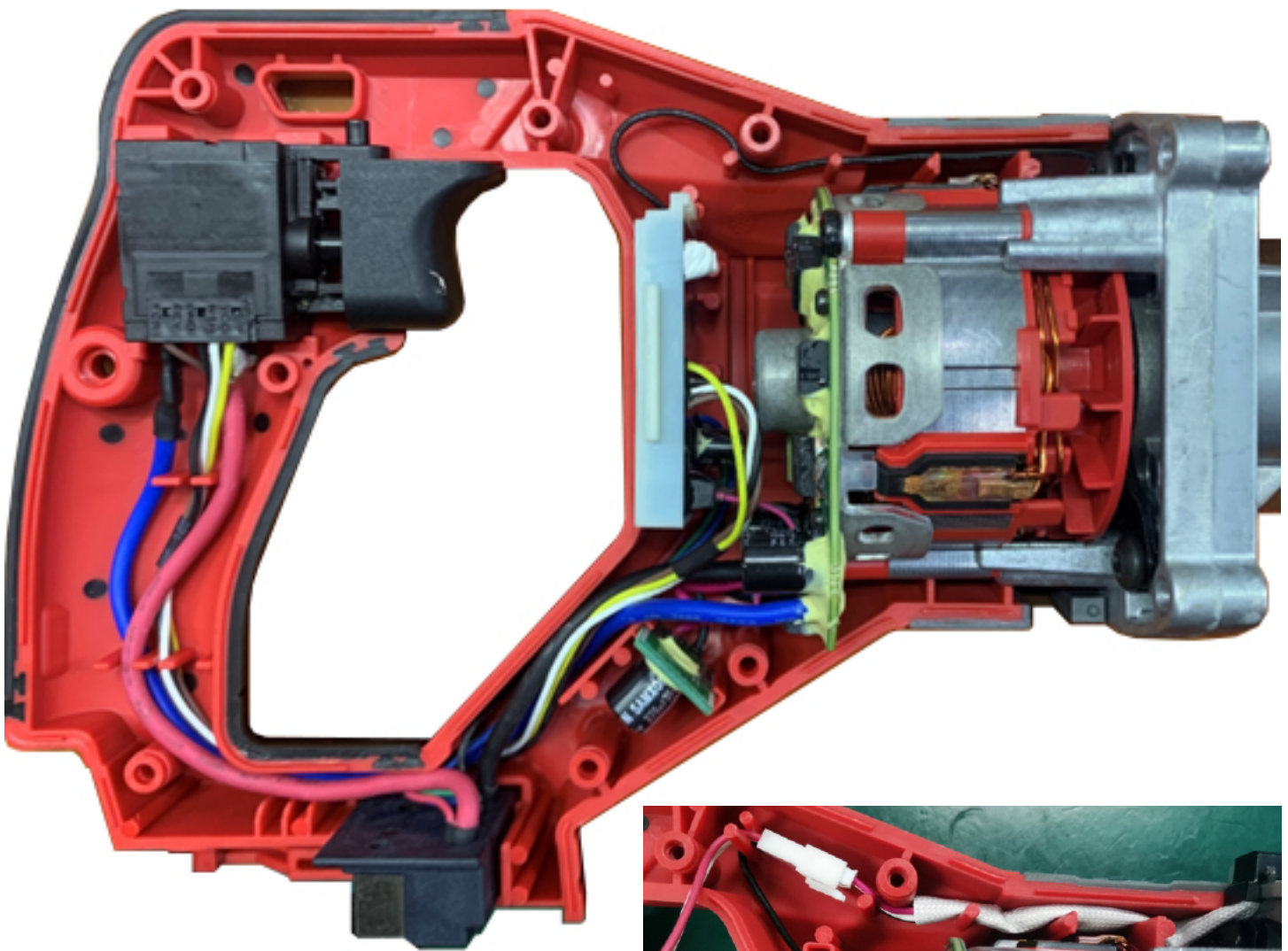


FIG.	PART NO.	DESCRIPTION OF PART	NO. REQ.
2	05-74-0735	M4 x 10mm Fillister Head T-20 Screw	(2)
7	06-82-7261	6-19 x .687 Pan Hd. Plast. T-15 Screw	(6)
8	06-82-7240	6-19 x 1/2" Pan Hd. ST T-15 Screw	(2)
9	-----	Right Handle Halve - Cover	(1)
11	42-42-0074	Lock-Off Shuttle	(1)
12	14-20-0289	Electronics Service Assembly (2910-20)	(1)
	14-20-0349	Electronics Service Assembly (2911-20)	(1)
13	-----	Left Handle Halve - Support	(1)
15	05-78-0012	M4 x 52mm Pan Hd. T-20 Machine Screw	(3)
21	02-04-0071	Ball Bearing	(1)
23	06-82-5324	10-24 x 1/2" Pan Hd. Tapt. T-25 Screw	(3)
27	28-14-0012	Pencil Vibrator Gearcase	(1)
28	28-20-0118	Gearcase Cover	(1)
29	06-82-0172	M5 x 35mm Pan Hd. PT T-20 Shoulder Scr.	(4)
31	-----	4' Whip Assy., Std. Equip. on 2910-20 (Shown)	(1)
	-----	8' Whip Assy., Std. Equip. on 2911-20 (Not Shown)	(1)
32	-----	1" Head Assembly	(1)
33	12-20-0172	Service Nameplate	(1)
34	-----	Spring	(1)
40	31-44-0209	Handle Halve Service Kit	(1)
41	14-50-0038	Rotor Service Assembly	(1)
42	43-74-0073	Rafter Hook Service Assembly	(1)
43	14-46-0271	4' Whip Assy. Service Kit on 2910-20	(1)
	14-46-0277	8' Whip Assy. Service Kit on 2911-20	(1)

SCREW TORQUE SPECIFICATIONS				
FIG.	PART NO.	WHERE USED	SEAT TORQUE	
			(KG/CM)	(IN/LBS)
2	05-74-0735	Rafter Hook Assy.	20-25	17-21
7	06-82-7261	Handle Halves	10-15	8-13
8	06-82-7240	Handle Halves	6-10	5-8
15	05-78-0012	Elect. Assy./Gearcase	16-20	14-17
23	06-82-5324	Rotor Assembly	40-52	34-45
29	06-82-0172	Gearcase Cover	10-15	8-13



As an aid to reassembly, take notice of wire routing and position in wire guides and traps while dismantling tool.

Be sure that all components of the electronics kit are seated firmly and squarely in the housing recesses.

Avoid pinched wires, be sure that all wires and sleeves are pressed completely down in wire guides and traps.

Prior to securing the housing cover onto the housing support, be sure that there are no interferences.

Before installing the battery, check for proper functionality of on-off switch trigger and lock-off shuttle.

Install battery and depress on-off switch trigger to assure tool is operating properly.

