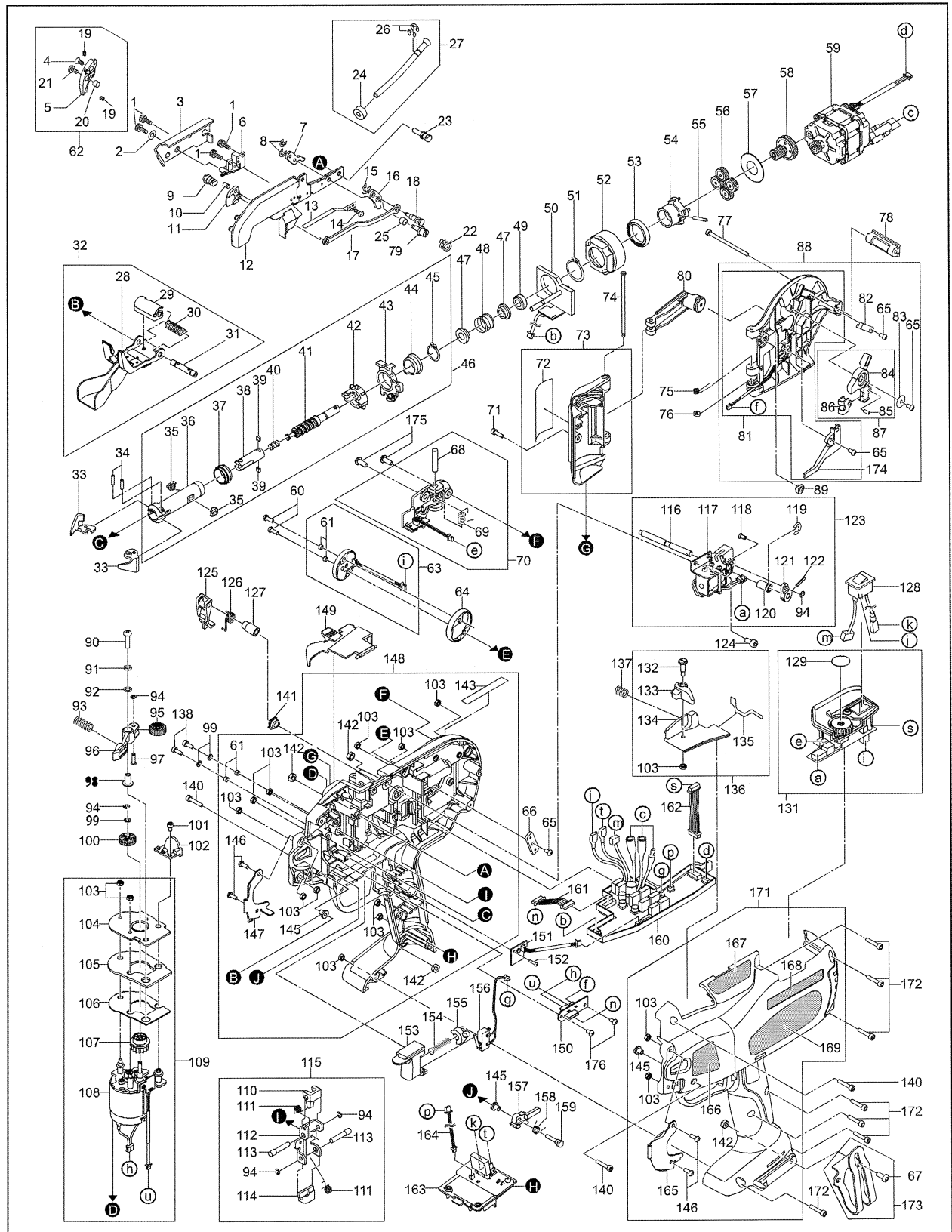


RB517

RE-BAR TYING TOOL



MAX PARTS PRICE LIST

April 2012

Model	Part NO	Part Code	Description	List Price	Ratio
RB517	1	BB40481	BOLT 3X5	0.32	10
RB517	2	EE31122	WASHER 3X7	0.32	10
RB517	3	RB12263	ARM B	23.38	5
RB517	4	AA22005	SCREW M3X5	0.32	5
RB517	5	RB11811	WIRE GUIDE A	151.20	5
RB517	6	RB11798	WIRE GUIDE B	101.92	5
RB517	7	RB12090	CUTTER LEVER B(397)	3.96	5
RB517	8	JJ10109	E-RING 2	0.32	10
RB517	9	RB11815	FIXED CUTTER	95.42	3
RB517	10	FF44120	PIN 4120	30.96	5
RB517	11	RB11818	CUTTER	76.00	4
RB517	12	RB81222	ARM A UNIT (517)	158.58	1
RB517	13	RB11800	LEAF SPRING	5.96	5
RB517	14	AA25113	PAN-HEAD SCREW 2X4	0.32	10
RB517	15	JJ10514	E-RING 3 CF	0.32	10
RB517	16	RB12228	CUTTER LEVER A	16.12	5
RB517	17	RB12265	CONNECTING ROD	14.48	5
RB517	18	RB10392	PIN	16.48	5
RB517	19	AA71408	SCREW 3 X 3	0.32	10
RB517	20	FF51667	PIN 1667	22.06	3
RB517	21	RB11814	WIRE GUIDE SCREW	42.42	3
RB517	22	KK33370	SPRING 3370	3.64	10
RB517	23	RB12003	SCREW	4.64	3
RB517	24	RB12007	PIPE SPONGE	0.32	10
RB517	25	FF51686	PIN 1686	5.58	3
RB517	26	JJ10101	E-RING 4	0.32	5
RB517	27	RB81219	PIPE ASSY (517)	48.06	1
RB517	28	RB81224	CURL GUIDE UNIT (517)	67.12	1
RB517	29	RB12010	CURL GUIDE COVER	4.26	5
RB517	30	KK33365	TORSION SPRING	6.58	5
RB517	31	RB11708	STOPPER SHAFT	7.58	10
RB517	32	RB81217	CURL GUIDE ASSY (517)	89.16	1
RB517	33	RB11816	HOOK	59.90	5
RB517	34	RB81113	WS PIN 2.5X10	1.32	4
RB517	35	RB12014	KEY B	17.42	5
RB517	36	RB12280	SLEEVE A	45.74	5
RB517	37	RB12279	SLEEVE GUIDE	15.16	3
RB517	38	RB81242	TIP AXIS B	92.42	3
RB517	39	RB10115	KEY B	11.84	5
RB517	40	KK23730	COMP. SPRING 3730	1.32	5
RB517	41	RB12281	TIP AXIS A	50.00	1
RB517	42	RB12015	SLEEVE B	72.68	10
RB517	43	RB70412	CUTTER RING UNIT	49.38	3
RB517	44	RB12091	CUTTER RING GUIDE	14.16	3

Model	Part NO	Part Code	Description	List Price	Ratio
RB517	45	JJ21011	C-RING 14	0.32	10
RB517	46	RB81247	TIP AXIS ASSY	349.00	1
RB517	47	RB12020	SPRING COLLAR	3.32	10
RB517	48	KK29026	COMP. SPRING 9026	1.32	10
RB517	49	RB12019	BUMPER	2.00	5
RB517	50	RB81177	TIP AXIS GUIDE ASSY	53.64	1
RB517	51	JJ21603	C-RING 20	0.32	5
RB517	52	RB10338	INTERNAL GEAR	2.64	5
RB517	53	LL11181	WHEEL 6704	42.42	3
RB517	54	RB70408	PLANETCAGE UNIT	27.96	1
RB517	55	FF31589	PIN 1589	0.68	3
RB517	56	RB10341	PLANET GEAR	2.63	5
RB517	57	RB10484	GEAR PRESS WHEEL	0.68	4
RB517	58	RB70418	SUN GEAR UNIT	38.48	5
RB517	59	RB70558	TWISTING MOTOR (RB517)	202.90	3
RB517	60	AA21419	SCREW 3X8	0.68	10
RB517	61	FF51817	HOLLOW PIN 1817	2.96	10
RB517	62	RB81248	WIRE GUIDE A ASSY	253.64	3
RB517	63	RB81246	REEL GUIDE ASSY	98.68	3
RB517	64	RB12284	REEL GUIDE	4.26	5
RB517	65	AA05555	SCREW 3X6 CF	0.32	10
RB517	66	RB11687	NUT PLATE	3.64	3
RB517	67	BB41706	BOLT 4X10	0.68	3
RB517	68	FF31563	PIN 1563	2.32	10
RB517	69	KK34089	SPRING 4089	1.00	10
RB517	70	RB81181	RATCHET COVER ASSY	82.26	1
RB517	71	BB40425	BOLT 3X10	0.32	10
RB517	72	RB10421	LABEL, FCC (USA)	2.64	5
RB517	73	RB70476	MOTOR COVER ASSY(397USA)	9.54	5
RB517	74	FF41821	STEP PIN 1821	8.22	5
RB517	75	KK34067	TORSION SPRING 4067	4.26	5
RB517	76	EE39609	RUBBER WASHER 1.8X6X2	0.32	5
RB517	77	BB40515	BOLT 3X50	1.32	10
RB517	78	RB12031	JOINT	2.64	3
RB517	79	RB11846	SHAFT	11.84	5
RB517	80	RB81178	REEL HOLDER ASSY	17.42	3
RB517	81	RB81179	REEL MAGAZINE	48.68	3
RB517	82	RB12038	REEL STOPPER SPRING	1.32	5
RB517	83	EE39907	WASHER 3.1X12X0.8	1.32	10
RB517	84	RB12035	REEL STOPPER	2.32	10
RB517	85	FF21240	PIN 2.5X6	0.32	5
RB517	86	RB12036	STOPPER PLATE	2.00	5
RB517	87	RB70427	REEL STOPPER	4.96	5
RB517	88	RB81180	REEL MAGAZINE ASSY	41.12	3
RB517	89	RB12099	PLATE B	14.48	3
RB517	90	BB41707	BOLT 4X16	0.68	3

Model	Part NO	Part Code	Description	List Price	Ratio
RB517	91	EE11103	SPRING WASHER 2-4	0.32	5
RB517	92	EE39825	WASHER 4.5X7.4X0.8	1.64	5
RB517	93	KK24175	COMP. SPRING 4175	1.00	5
RB517	94	JJ10113	E-RING 2.5	0.32	5
RB517	95	RB10359	FEEDING GEAR B2	101.00	3
RB517	96	RB10362	RELEASE LEVER	13.84	5
RB517	97	FF41809	STEP PIN 1809	5.58	5
RB517	98	FF51628	HOLLOW PIN 1628	5.26	5
RB517	99	EE32104	WASHER 2-3	0.32	5
RB517	100	RB10357	FEEDING GEAR B1	122.38	3
RB517	102	RB10364	WIRE GUIDE C	23.06	3
RB517	103	CC41104	HEX.NUT 1-3 FOR HD-12/17	0.32	5
RB517	104	RB70434	PARTITION PLATE	9.22	4
RB517	105	RB12045	PARTITION SPONGE	1.64	5
RB517	106	RB12044	SPONGE SUPPORT	2.00	5
RB517	107	RB70509	FEEDING GEAR A ASSY	33.58	3
RB517	108	RB81174	FEEDING MOTOR ASSY	113.84	1
RB517	109	RB81183	FEEDING ASSY	156.26	1
RB517	110	RB10368	JAW A	37.84	5
RB517	111	KK33249	TORSION SPRING 3249	4.26	5
RB517	112	RB10370	JAW BASE	6.90	10
RB517	113	FF41822	STEP PIN 1822	3.32	3
RB517	114	RB10369	JAW B	31.26	3
RB517	115	RB70495	JAW BASE ASSY	81.90	3
RB517	116	RB12238	ROTARY PIN	16.48	3
RB517	117	RB81185	SOLENOID ASSY	50.68	3
RB517	118	FF41855	PIN 1855	4.64	3
RB517	119	JJ10106	E-RING 6	0.32	5
RB517	120	RB12030	PALTE C	7.26	5
RB517	121	RB12029	ROTARY PLATE	7.26	5
RB517	122	FF21620	PIN 2X12	0.32	5
RB517	123	RB70531	BRAKE ASSY	92.80	1
RB517	124	BB40712	BOLT 4X8	1.00	10
RB517	125	RB12025	REEL PRESS	35.54	3
RB517	126	KK33373	SPRING 3373	1.32	5
RB517	127	FF52114	HOLLOW PIN 2114	7.26	4
RB517	128	RB70457	MAIN SWITCH UNIT(RB397)	14.80	5
RB517	129	RB12267	LABEL, TORQUE DIAL (517)	4.26	5
RB517	131	RB81232	SWITCH BASE ASSY (517)	181.90	1
RB517	132	RB12054	STEP PIN	3.64	10
RB517	133	RB12053	RELEASE STOPPER	2.32	5
RB517	134	RB12055	STOPPER BASE	3.64	5
RB517	135	RB12056	SPONGE F	1.00	5
RB517	136	RB81139	STOPPER BASE ASSY	10.54	3
RB517	137	KK23561	COMPRESSION SPRING 3561	1.00	3
RB517	138	BB40710	BOLT 3X8	1.00	3

Model	Part NO	Part Code	Description	List Price	Ratio
RB517	140	BB40709	BOLT 3X16	1.00	3
RB517	141	RB12236	PLATE A	18.12	3
RB517	142	CC42512	HEX NUT 1A M4	0.32	3
RB517	143	RB12098	WARNING LABEL	1.32	1
RB517	145	FF52111	PIN 2111	7.90	5
RB517	146	BB41503	BOLT 3X8	1.32	5
RB517	147	RB11979	COVER L(397)	8.58	5
RB517	148	RB81238	FRAME L ASSY	122.06	1
RB517	149	RB11987	WINDOW	3.64	5
RB517	150	RB81195	RELAY BOARD UNIT	39.48	10
RB517	151	RB81191	SENSOR CIRCUIT D BOARD UNIT	44.74	3
RB517	152	AA31724	SCREW 2X8	0.32	5
RB517	153	RB12080	TRIGGER (397)	3.64	4
RB517	154	KK23656	COMPRESSION SPRING 3656	1.32	5
RB517	155	RB12101	TRIGGER LOCK LEVER(397)	2.00	5
RB517	156	RB70453	TRIGGER AWITCH UNIT(RB397)	15.16	10
RB517	157	RB70473	SWITCH LEVER UNIT	6.90	10
RB517	158	KK34083	SPRING 4083	1.32	5
RB517	159	RB11686	SWITCH LEVER PIN	9.54	5
RB517	160	RB81225	MAIN CIRCUIT BOARD UNIT (517)	298.16	1
RB517	161	RB70465	REPLAY BOARD HARNESS UNIT(RB39	8.22	3
RB517	162	RB70454	INTERFACE HARNESS UNIT(RB397	17.80	3
RB517	163	RB81188	ELECTRODE UNIT	70.42	1
RB517	164	RB70464	BATTERY SIGNAL HARNESS UNIT	2.96	10
RB517	165	RB11981	COVER R (397)	8.58	5
RB517	166	RB11983	LABEL CURL GUIDE	1.32	3
RB517	167	RB11985	USAGE LABEL	1.32	10
RB517	168	RB11982	LABEL, MAIN SWITCH	1.32	5
RB517	169	RB12303	517 LABEL (RB517USA)	37.54	1
RB517	171	RB81226	FRAME R ASSY (517USA)	131.58	1
RB517	172	BB40810	BOLT 3X16	0.32	5
RB517	173	RB81184	BELT HOOK ASSY	12.84	5
RB517	174	RB12039	LED COVER	2.64	10
RB517	175	BB41708	BOLT 4X10	1.32	3
RB517	176	AA31722	SCREW 3X8	0.32	5