

074404A

D

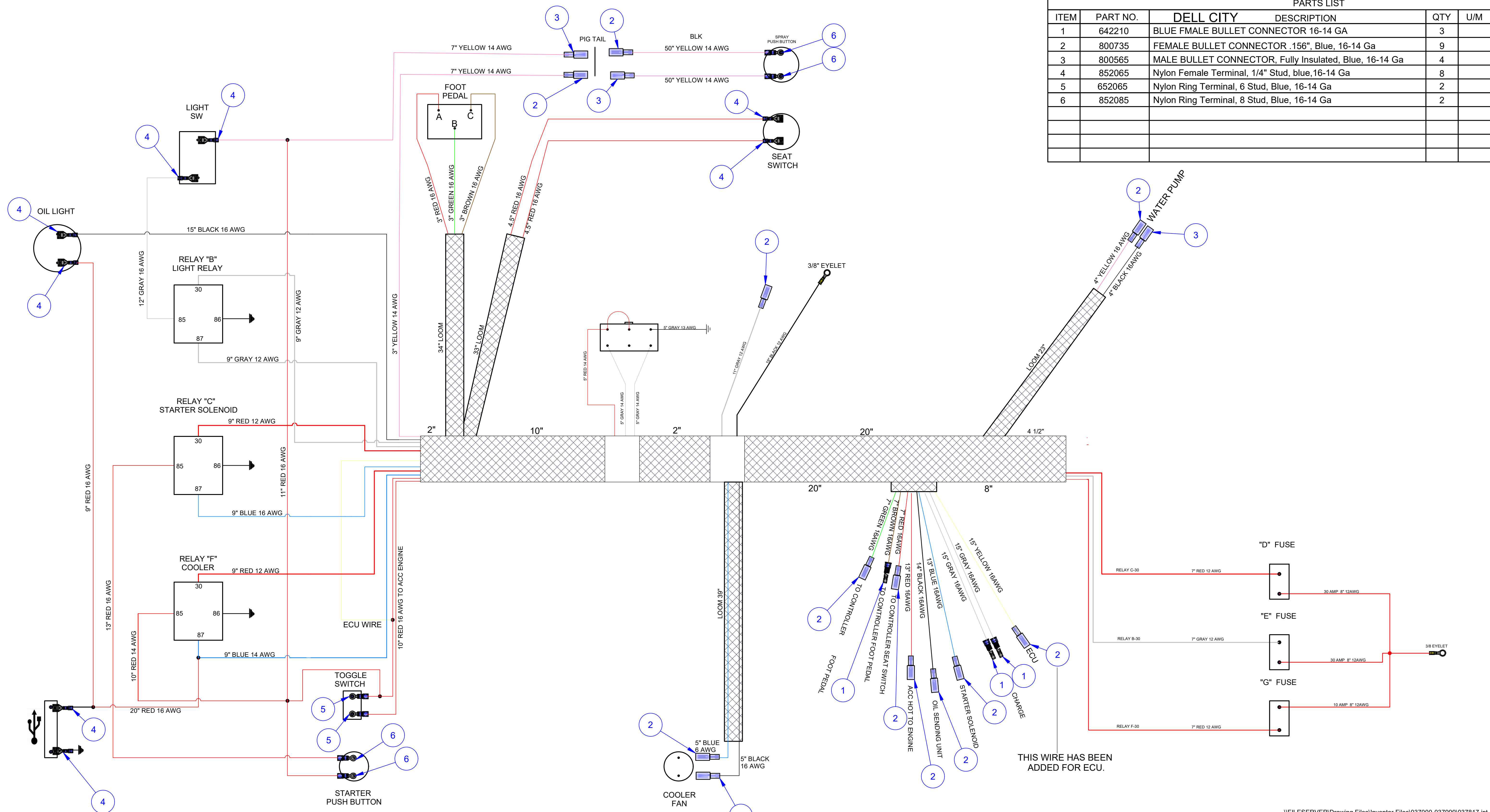
C

B

A

8 7 6 5 4 3 2 1

PARTS LIST				
ITEM	PART NO.	DELL CITY DESCRIPTION	QTY	U/M
1	642210	BLUE FEMALE BULLET CONNECTOR 16-14 GA	3	
2	800735	FEMALE BULLET CONNECTOR .156", Blue, 16-14 Ga	9	
3	800565	MALE BULLET CONNECTOR, Fully Insulated, Blue, 16-14 Ga	4	
4	852065	Nylon Female Terminal, 1/4" Stud, blue, 16-14 Ga	8	
5	652065	Nylon Ring Terminal, 6 Stud, Blue, 16-14 Ga	2	
6	852085	Nylon Ring Terminal, 8 Stud, Blue, 16-14 Ga	2	



THIS WIRE HAS BEEN ADDED FOR ECU.

WIRING HARNESS, MP215, 315, 235

819 South 5th Street Paragould, AR 72450

CONFIDENTIAL INFORMATION CONTAINED HEREIN IS THE CONFIDENTIAL PROPERTY OF ALLEN ENGINEERING CORPORATION AND MUST NOT BE DISCLOSED WITHOUT PERMISSION. PRINTS ARE SUBJECT TO RECALL AND MUST BE RELEASED UPON DEMAND.

TOLERANCES, UNLESS OTHERWISE SPECIFIED	ANLR	MST 1/8
1-PLACE DEC	DATE	CLASS
2-PLACE DEC	PROJECT NUMBER	SIZE
3-PLACE DEC		PART NUMBER

DRAWN <Responsible Designer> **D** **074404A**

CHECKED _____ SCALE _____ NEXT ASSEMBLY _____ RECD _____ 0.001 lbmass _____ L75P _____ REVISION _____ A

074404A