



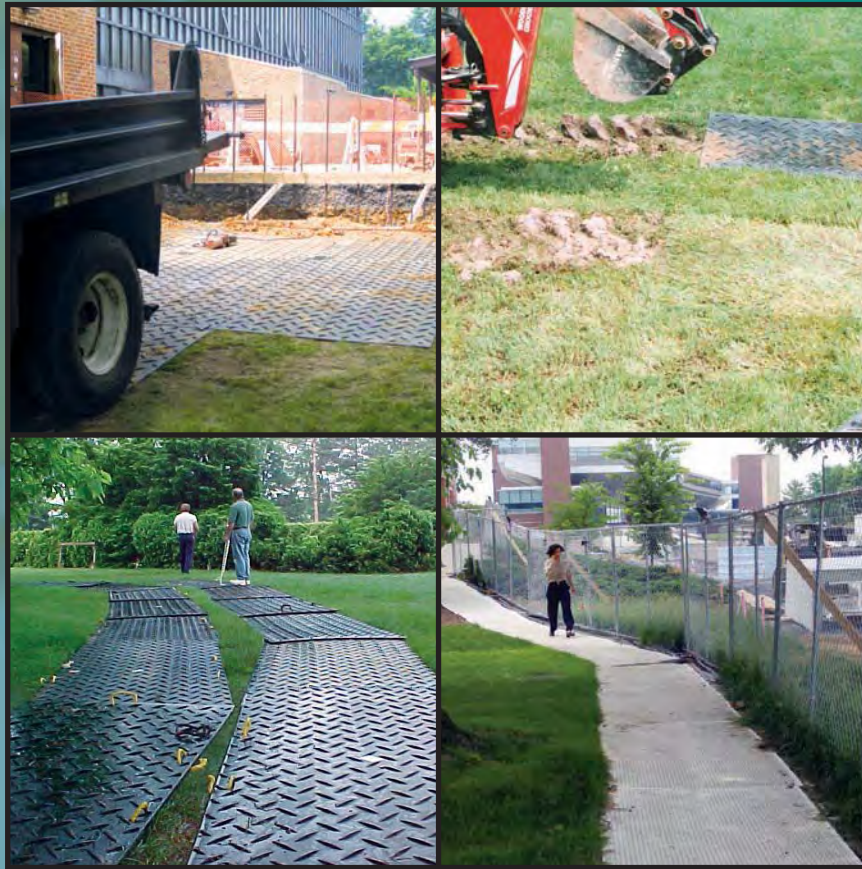
Click Here To View
Item at

www.GapPower.com

Sales • Rentals
Parts & Service

*Alturna***MATS**[®]

The Original drive-on, ground protection mats



The mats preferred by professionals worldwide

*Protect Your Turf & Save Thousands in
Ground Restoration Costs...*



AlturnaMATS®

World's Toughest Ground Protection Mat



AlturnaMATS *Built Tough!*

The Original Ground Protection Mats Featuring Maximum Traction Diamond Plate Tread Design

These rugged mats are made of 1/2" thick polyethylene so they are virtually indestructible. They withstand vehicles weighing up to 60 tons, bend but do not break and feature a Limited Lifetime Warranty. AlturnaMATS have been tested in record cold and heat. AlturnaMATS are an environmentally friendly mat as they are made from recycled plastic materials.

With AlturnaMATS, getting stuck is virtually eliminated. They are available smooth on one side or smooth on both sides, ideal for removing dirt or gravel.

- Easily supports 60 ton vehicles
- Rugged 1/2" thick polyethylene
- Bold cleat design for great traction
- Build a roadway or working platform in minutes
- Leave turf smooth, even in soft conditions
- No more splintered, warped, water logged plywood
- Simply hosing down leaves the mats clean
- Available in both black or white mats
- Mats can be locked together with Turn-A-Links forming a continuous roadway
- Limited Lifetime Warranty

Sizes to meet your needs

Black	White	Weight
4' x 8'	4' x 8'	86 lbs.
3' x 8'	3' x 8'	64.5 lbs.
3' x 6'	3' x 6'	51 lbs.
2' x 8'	2' x 8'	43 lbs.
2' x 6'	2' x 6'	32.25 lbs.
2' x 4'	2' x 4'	21.5 lbs.



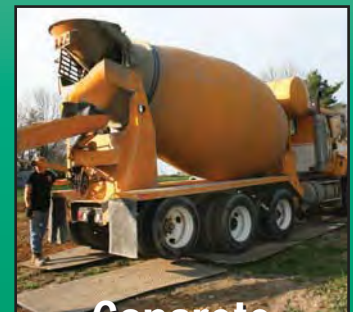
Landscaping



Tree Care



Construction



Concrete



St...

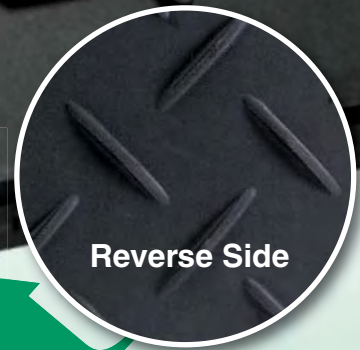
VersaMATS

Most Versatile Mats in the Industry



*Sizes to meet
your needs*

Black	White	Weight
4' x 8'	4' x 8'	86 lbs.
3' x 8'	3' x 8'	64.5 lbs.
2' x 8'	2' x 8'	43 lbs.



Reverse Side



VersaMATS

Easy to Walk On - Safe to Work On - Great to Drive On
Featuring an Exclusive Slip-Resistant Tread Design

VersaMATS literally are the most versatile ground protection mats in the industry. The flat, slip-resistant tread permits pedestrians to walk safely on the mats, yet they are as rugged as the original AlturMATs. The reverse side has the same diamond plate tread as AlturMATs, providing great traction for vehicles.

VersaMATS are also available in white, making them ideal for safe use as long walkways even in darkened conditions. They are also available smooth on one side.

- Leaves turf smooth even in soft soil conditions
- Tough 1/2" thick polyethylene
- Two practical cleat designs... for walking and vehicle traffic
- Withstand 60-ton loads
- Build a temporary roadway or walkway in minutes
- Lock together with Turn-A-Links
- Limited Lifetime Warranty



Snow/Slush



Utilities



Golf Courses



Cemeteries



Drilling

AlturnaMATS®

One Piece Plastic Outrigger Pads



Safety Tech Pads

Deliver the safety, quality and performance you expect from the industry leader.



Stock Models

MODEL	LOAD	CAPACITY	WIDTH	LENGTH	HEIGHT	WEIGHT	SQ. IN.
PAD1515.75	40,000# (KG20,412)	18,000# (KG9,072)	15" (C38.1)	15" (C38.1)	.75" (C1.905)	5.5# (KG3.40)	225 (CT1,451.70)
PAD18181	55,000# (KG24,948)	30,000# (KG13,608)	18" (C45.72)	18" (C45.72)	1" (C2.54)	11.0# (KG4.99)	324 (CT2,090.45)
PAD24241	60,000# (KG27,216)	35,000# (KG15,876)	24" (C60.96)	24" (C60.96)	1" (C2.54)	20.0# (KG9.07)	576 (CT3,761.35)
PAD24242	62,000# (KG28,123)	40,000# (KG18,144)	24" (C60.96)	24" (C60.96)	2" (C5.08)	38.0# (KG17.24)	576 (CT3,761.35)
PAD30301	81,000# (KG36,741)	41,000# (KG18,597.6)	30" (C76.2)	30" (C76.2)	1" (C2.54)	31.0# (KG14.06)	900 (CT5,806.8)
PAD36361	93,000# (KG42,184.8)	43,000# (KG19,504.8)	36" (C91.44)	36" (C91.44)	1" (C2.54)	45.0# (KG20.41)	1296 (CT8,361.79)
PAD48481	135,000# (KG61,236)	52,000# (KG23,587.2)	48" (C121.92)	48" (C121.92)	1" (C2.54)	80.0# (KG36.29)	2304 (CT14,865.4)
PAD30302	85,000# (KG38,556)	43,000# (KG19,504.8)	30" (C76.2)	30" (C76.2)	2" (C5.08)	62.0# (KG28.12)	900 (CT5,806.8)
PAD36362	98,000# (KG44,252.8)	45,000# (KG20,412)	36" (C91.44)	36" (C91.44)	2" (C5.08)	90.0# (KG40.83)	1296 (CT8,361.79)
PAD48482	140,000# (KG63,504)	55,000# (KG24,948)	48" (C121.92)	48" (C121.92)	2" (C5.08)	160.0# (KG72.58)	2304 (CT14,865.4)

*8" X 10" OUTRIGGER LEG APPLIED UNDER TWO SEPARATE CONDITIONS: 10,000# VERTICALLY & 10,000# WITH A 45° ANGLE.
 **HANDLE LOCATED ON WIDTH SIDE OF ALL PADS. PADS 900 SQ. IN. & LARGER HAVE 2 OR MORE HANDLES OPPOSITE EACH OTHER.
 ***CUSTOM SIZE PADS ARE AVAILABLE. REQUIRES A MINIMUM ORDER. LEAD TIME FOR NON-STOCK ITEMS IS 30-45 DAYS.
 KEY: C = CENTIMETERS; KG = KILOGRAMS; CT = SQUARE CENTIMETERS

Safety Tech Pad Features:

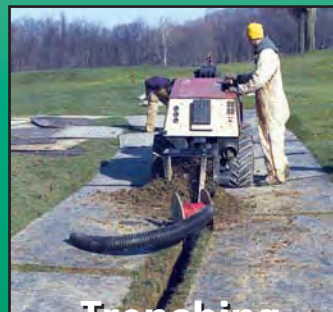
- Reliable Load Distribution
- Lightweight
- Safety Texturing
- Memory Recovery
- Lifetime Guarantee



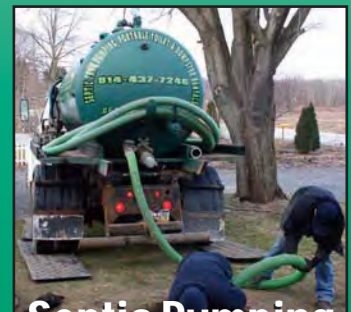
Manufactured Housing



Recreation Areas & Events



Trenching



Septic Pumping

AlturnaMATS Accessories

Turn-A-Links

Single Turn-A-Link



Steel links lock mats together to form a semi-permanent, yet portable, continuous roadway, walkway or working platform.

Double Turn-A-Link



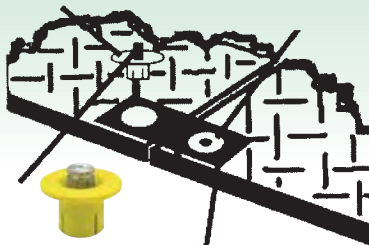
Galvanized Turn-A-Link: Single or Double



The same steel material, but with a galvanized coating: easier to locate & harder to rust.

		Item #	Ship Wt.
Round Links	Single	RTL-S-G	8 oz.
	Double	RTL-G-G	20 oz.
Flat Links	Single	FTL-S-G	8 oz.
	Double	FLT-D-G	20 oz.
EZ Links	Single	EZL-S	4 oz.
	Double	EZL-D	6 oz.

E-Z Link System



E-Z Links are a quick & convenient linking system for the AlturnaMATS VersaMATS. The links are available in single or double, & are suitable for pedestrian applications as well as movement of light, compact equipment (less than 12,000 GVW) when on stable ground conditions.

MAT-PAK



This complete package is the handy way to transport and store your AlturnaMATS.

Consists of:

- 12 Mats (4' x 8' or 3' x 8')
- 1 Metal storage, skid rack
- 20 Single Turn-A-Links
- 2 Handi-Hooks
- 2 Ratchet Straps

Handi-Hooks



AlturnaMATS' Handi-Hooks make moving mats easier, even in wet areas. Made of steel rod, painted white.

Length	Weight
3' (91.44 cm)	2.5 lbs. (1.13 kg)

Single E-Z Link



MAT-PAK	Item No.	Weight
Original Diamond Plate		
Black - 4' x 8' Package	AMCP4	1126 lbs.
Black - 3' x 8' Package	AMCP3	868 lbs.
White - 4' x 8' Package	WMCP4	1126 lbs.
White - 3' x 8' Package	WMCP3	868 lbs.
VersaMATS		
Black - 4' x 8' Package	VMCP4	1126 lbs.
Black - 3' x 8' Package	VMCP3	868 lbs.
White - 4' x 8' Package	WVCP4	1126 lbs.
White - 3' x 8' Package	WVCP3	868 lbs.

AlturnaMATS®

Phone: 888-544-6287 • Fax: 814-827-2903 • E-mail: sales@alturnamats.com

www.alturnamats.com

AlturnaMATS®



"AlturnaMATS, Your Single Source for Professional Ground Protection Mats."

AlturnaMATS & VersaMATS each leave turf smooth, even under heavy vehicle traffic. No costly turf repair bills and you'll Never Get Stuck Again.

AlturnaMATS, Inc. markets two different ground mats described in this brochure...

- **AlturnaMATS:** Featuring a bold diamond plate tread for maximum traction.
- **VersaMATS:** Featuring a flat, slip-resistant tread on one side designed for pedestrian traffic, and the bold diamond plate tread on the other side for vehicle traffic.

These mats virtually eliminate damage to lawns and landscaped areas throughout the world...from North America, Asia, Australia, Europe, to even Antarctica. These rugged mats are the popular choice among professionals. They are easy to use, lock into place to form a continuous, solid roadway or work platform

and they last for years. They are unequalled for quality and performance under the most hazardous conditions.

Each mat can be used in a broad variety of applications such as construction, golf courses, utilities, landscaping, tree care, cemeteries, drilling, sewage...wherever saving the costs of ground restoration is a factor. And they are great to save heavy vehicles from getting stuck in mud.

AlturnaMATS and VersaMATS provide locking links designed of steel to fit into holes on each end of the mats, locking them end-to-end to create a continuous roadway, or you can easily create a large platform for working vehicles.

Don't Get Stuck in a Rut

Now there is no reason to create ruts such as shown here after a stump puller traversed this front lawn. The owner had the ruts repaired at a cost of \$1,800 and needless to say, never used the tree removal company again.



www.alturnamats.com