

# THE ULTIMATE SOLUTION FOR RE-BAR TYING WORK

# RE-BAR-TIER™ RB517



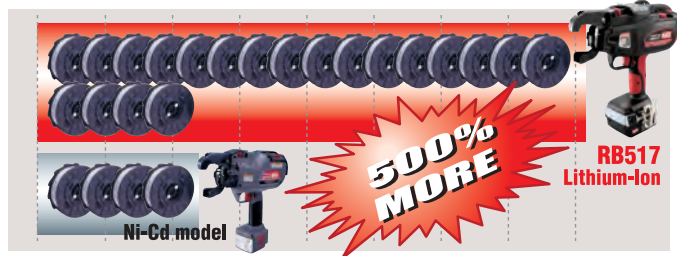
## BENEFITS

### ✓ REDUCES TYING TIME

About 5 times faster than manual tying. Makes ties in less than 1sec. per tie with consistent tie strength. High speed tying saves you time and money.

### ✓ LI-ION HIGHER CAPACITY BATTERY

Thanks to the Lithium-Ion battery technology, the RB517 ties approx. 1,800 ties per charge, which is 5 times more than Ni-Cd model. Less charging time means more productive work in the jobsites. Also, Lithium-Ion battery is free from Memory Effect so you can charge the battery whenever convenient.



### ✓ BRUSHLESS TWISTING MOTOR

The brushless electric motor offers higher efficiency and longer lifetime. It increases ties per charge by 35% comparing with regular motor and does not require service caused by brush erosion or dirt on commutator.

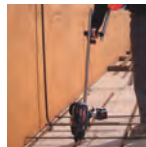


### ✓ REDUCES RISK OF HEALTH PROBLEMS

Just pull the trigger, this simple operation reduces potential wrist damage such as carpal tunnel injuries.



Carpal tunnel syndrome



Extension bar (Option)

Using the optional extension bar reduces the risk of back injuries.

Both the National Institute for Occupational Safety and Health and Health Construction Safety Association of Ontario state the MAX Re-bar Tying Tool reduces the risk of Carpal Tunnel Syndrome and other work related musculoskeletal disorders.

### ✓ LIGHT WEIGHT & COMPACT BODY

Weighs only 5.3 lbs. Easy to handle.

### ✓ ONE HAND OPERATION

Allows worker to hold re-bar while tying, reducing set up time.

### ✓ TIES UP TO #7 X #8 RE-BARS

Designed for tying large size re-bars. Ties from #5 x #5 up to #7 x #8 combinations.

### ✓ SELECTIVE WRAPPING TIMES PER TIE

With the adjustment dial you can select 3 wraps per tie or 4 wraps per tie.

## APPLICATIONS

COMMERCIAL BUILDINGS / FOUNDATIONS / ROAD CONSTRUCTION / BRIDGES  
PRECAST PLANTS / RADIANT HEATING TUBES



## STANDARD EQUIPMENT

- Battery pack JPL914
- AC Battery charger JC928
- Plastic carry case
- Instructional DVD



JPL914



JC928



## OPTION



Extension bar (JE200)

## TIE WIRE 21 gauge. 50 coils / box

TW897A: Regular Steel wire

TW897A-PC: Polyester-Coated wire



## SPECIFICATIONS

TOOL MODEL	RB517
WEIGHT	5.3 lbs (Battery included)
DIMENSIONS	12" x 4-1/8" x 12"
TYING SPEED	Less than 1 second / tie
WRAPS PER TIE	3 or 4 wraps / tie
TIES PER COIL	Approx. 90 ties (3 wraps) Approx. 75 ties (4 wraps)
TIES PER CHARGE	Approx. 1,800 ties (3 wraps) / charge Approx. 1,700 ties (4 wraps) / charge
APPLICABLE BAR SIZES	#5 x #5 to #7 x #8
BATTERY MODEL	JPL914
BATTERY TYPE	Lithium-ion
BATTERY VOLTAGE	14.4V (3.0 Ah)
CHARGER MODEL	JC928
RECHARGE TIME	Approx. 30 minutes
CHARGER INPUT	AC120V 50/60Hz

The specifications and design of the products in this catalog will be subject to change without advance notice due to our continuous efforts to improve the quality of our products.



## MAX USA CORP.

257 East 2nd Street Mineola, New York 11501  
Phone: 800-223-4293 Fax: 516-741-3272  
www.maxusacorp.com

Dealer: