



SERVICE PARTS LIST

BULLETIN NO.
54-05-2771

SPECIFY CATALOG NO. AND SERIAL NO. WHEN ORDERING PARTS		REVISED BULLETIN 54-05-2770	DATE June 2023
M18™ TRANSFER PUMP			
CATALOG NO. 2771-20	STARTING SERIAL NO. H59B	WIRING INSTRUCTION See page 2	

EXAMPLE:

00	0
----	---

 Component Parts (Small #) Are Included When Ordering The Assembly (Large #).

NOTE:
 Clean internal and external threads with wire brush before putting new fittings in. Teflon tape is recommended to seal the new fittings in place.

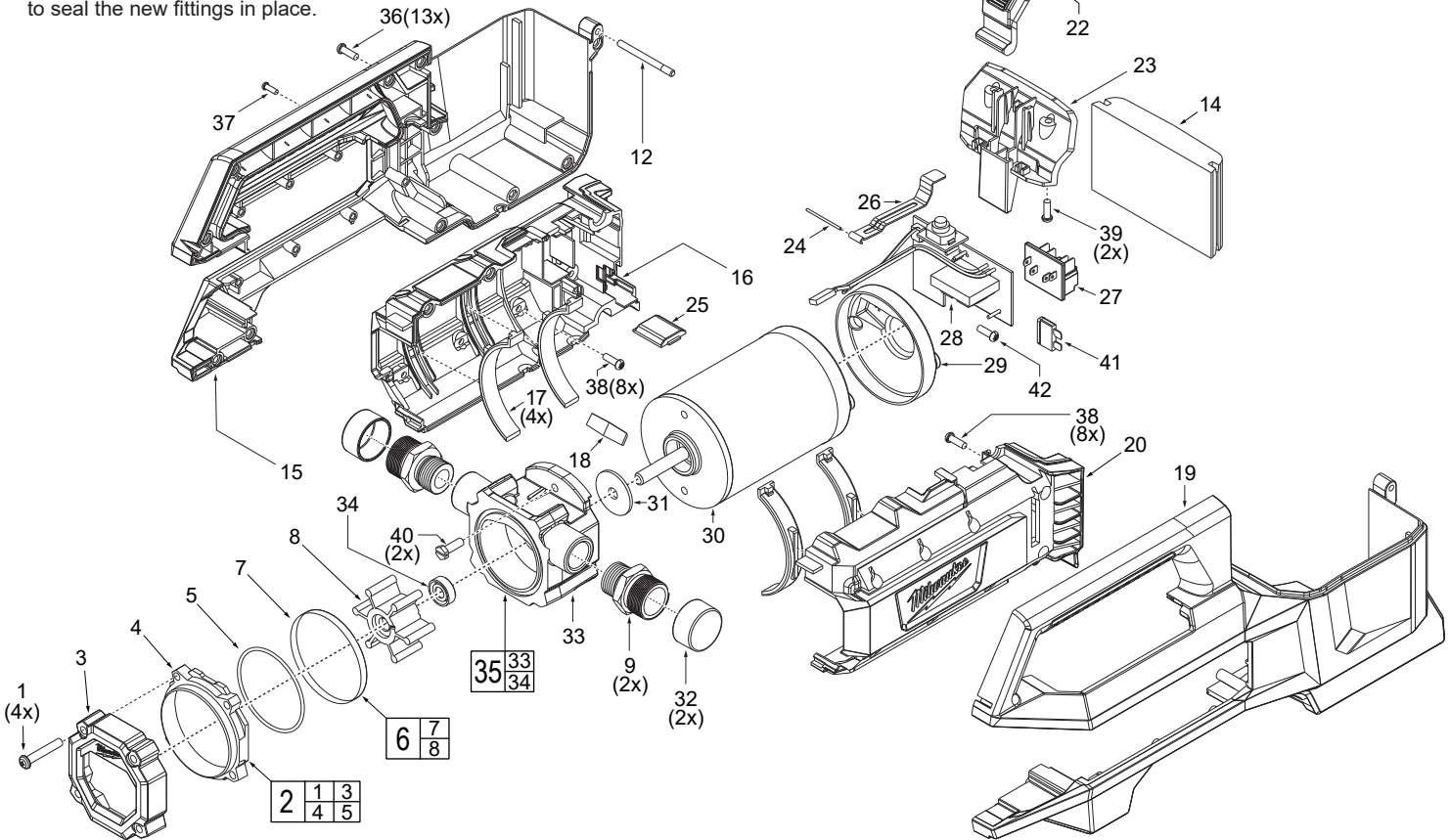


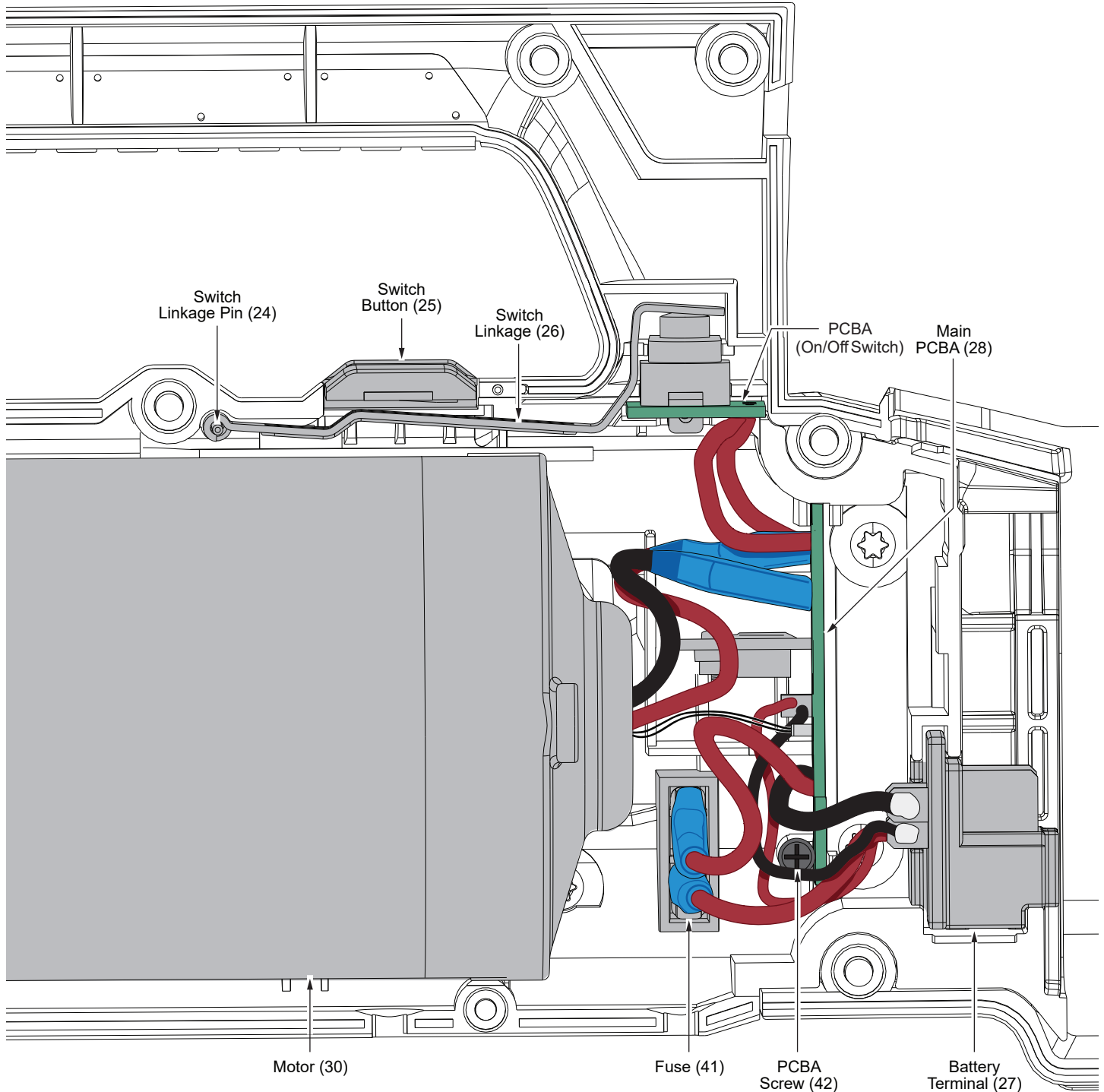
FIG.	PART NO.	DESCRIPTION OF PART	NO. REQ.
1	06-82-0048	M5 x 30 Screw Kit (Set of 4)	(1)
2	14-38-0018	Impeller Window Kit	(1)
3	-----	Front Cover	(1)
4	-----	Lens	(1)
5	-----	Window	(1)
6	49-16-2771	Flexible Impeller Kit w/ Grease	(1)
7	-----	O-Ring	(1)
8	-----	Impeller	(1)
9	43-33-0026	Brass Fitting 1/2" NPT x 3/4" GHT	(2)
10	31-21-0022	Battery Door Kit	(1)
11	-----	Battery Door	(1)
12	-----	Battery Door Pin	(1)
13	12-20-0083	Service Nameplate (Not Shown)	(1)
14	44-52-0054	Rubber Battery Pad	(1)
15	43-40-0207	Right Half Protective Frame	(1)
16	31-44-0542	Right Half Housing	(1)
17	44-52-0060	Motor Cushion	(4)
18	28-28-0047	Arrow Back Plate	(1)
19	43-40-0206	Left Half Protective Frame	(1)
20	31-44-0541	Left Half Housing	(1)
21	44-74-0078	Battery Door Latch	(1)
22	40-50-0429	Spring	(1)
23	44-74-0074	Door Latch Bay	(1)
24	44-66-0177	Axis Pin	(1)
25	31-15-0104	Switch Button	(1)
26	42-36-0038	Switch Linkage	(1)
27	23-74-0023	Battery Terminal	(1)
28	14-20-0307	PCBA Assembly	(1)

FIG.	PART NO.	DESCRIPTION OF PART	NO. REQ.
29	22-68-0019	Motor End Cover	(1)
30	16-01-0113	Motor	(1)
31	45-88-0144	Rubber Washer	(1)
32	30-16-0013	Threads Cap	(2)
33	-----	Pump Head	(1)
34	-----	Oil Seal NBR	(1)
35	42-32-0011	Pump Service Assembly	(1)
36	05-74-0446	M4 x 16 Screw	(13)
37	05-74-0444	M3 x 9 Screw	(1)
38	05-74-0443	M4 x 10 Screw	(16)
39	05-74-0442	M4 x 12 Screw	(2)
40	05-74-0441	M5 x 10 Screw	(2)
41	-----	Fuse	(1)
42	-----	M3 x 10 Screw	(1)

FIG. NOTES
 9 The brass fittings are a standard size and should be available to purchase at most hardware stores.
 13 A clean, dry surface is essential for proper performance for any adhesive system. The area intended for application of any adhesive label or nameplate must be prepared by cleaning with isopropyl alcohol. The solvent is to be applied with a clean, lint free applicator and the surface allowed to dry before applying the label or nameplate.

M18 Transfer Pump Wiring

Install the electronics assembly as shown. Be sure all components are seated squarely and firmly in place. Be sure there is no interference when installing the left half protective frame/housing.



SCREW TORQUE SPECIFICATIONS

FIG.	PART NO.	WHERE USED	SEAT TORQUE	
			(kgf-cm)	(lb-in)
1	06-82-0048	Front Cover	11-15	10-13
36	05-74-0446	Housing Support	12-16	10-14
37	05-74-0444	Housing Support	6-8	5-7
38	05-74-0443	Protective Frame	7-9	6-8
39	05-74-0442	Battery Bracket	9-11	8-10
40	05-74-0441	Pump Head	10-13	9-11
42	-----	PCBA	6-8	5-7