

TAKEUCHI

EXCAVATOR LIFTING CAPACITIES

TB210R Canopy
TB216 Canopy
TB230 Canopy
TB235-2 Canopy / Cab
TB240 Canopy / Cab
TB260 Canopy / Cab
TB290 Cab
TB280FR Cab
TB2150 Cab

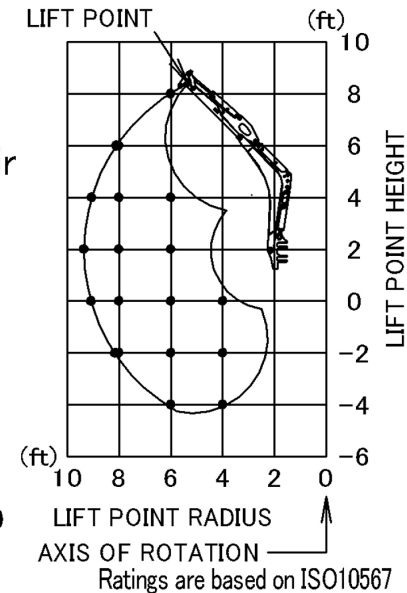
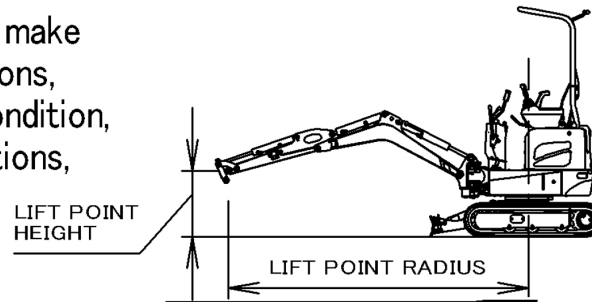


EXCAVATOR MODEL TB210R

Long arm Length : 880mm(34.6in.)

Machine with Canopy and Rubber crawler, without bucket.

- Do not attempt to lift or hold any load that is greater than these rated values at their specified load radii and height.
 - The rated lift capacities are based on the machine being level and situated on a firm supporting surface.
- For safe lifting, the operator is expected to make due allowance for the particular job conditions, such as soft or uneven ground, non-level condition, load to the machine sides, hazardous conditions, experience of personnel, etc.



- The loads in the charts do not exceed 87% of hydraulic lift capacity or 75 % of tipping load.
- The load point is the bucket hinge pin.

UNITS : lbs.

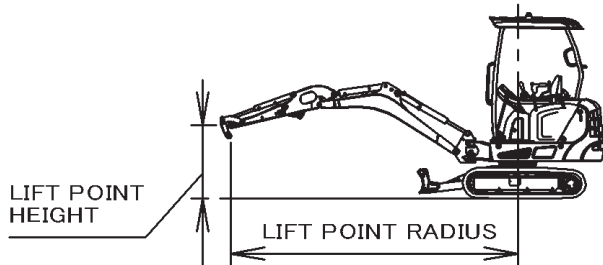
| LIFTING CAPACITIES Over Front ; Blade DOWN | | | | LIFTING CAPACITIES Over Front ; Blade UP | | | | LIFTING CAPACITIES ; Over Side (Crawler width 1020mm (40.2in.)) | | | | LIFTING CAPACITIES ; Over Side (Crawler width 750mm (29.5in.)) | | | | LIFT POINT HEIGHT (ft) |
|--|-----|-----|------|--|-----|-----|-----|---|-----|-----|------|--|-----|-----|-----|------------------------|
| LIFT POINT RADIUS (ft) | | | | LIFT POINT RADIUS (ft) | | | | LIFT POINT RADIUS (ft) | | | | LIFT POINT RADIUS (ft) | | | | |
| MAX | 8 | 6 | 4 | MAX | 8 | 6 | 4 | MAX | 8 | 6 | 4 | MAX | 8 | 6 | 4 | |
| | | 432 | | | | 432 | | | | 432 | | | | 321 | | 8 |
| 453 | 450 | | | 339 | 348 | | | 416 | 426 | | | 197 | 203 | | | 6 |
| 434 | 471 | 510 | | 284 | 350 | 510 | | 350 | 428 | 510 | | 161 | 205 | 330 | | 4 |
| 412 | 524 | 779 | | 267 | 341 | 521 | | 331 | 420 | 636 | | 150 | 197 | 303 | | 2 |
| 394 | 514 | 813 | 973 | 276 | 332 | 497 | 901 | 343 | 410 | 611 | 973 | 154 | 188 | 280 | 478 | 0 (Ground) |
| 382 | 406 | 681 | 1234 | 321 | 330 | 492 | 913 | 382 | 406 | 606 | 1125 | 181 | 186 | 276 | 488 | -2 |
| | | 419 | 830 | | | 419 | 830 | | | 419 | 830 | | | 288 | 513 | -4 |

EXCAVATOR MODEL TB216

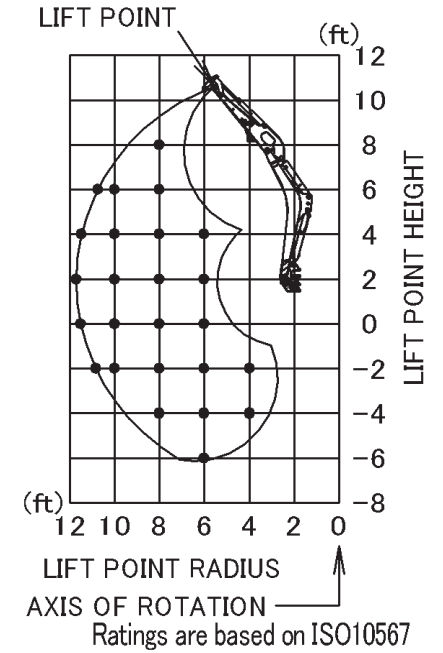
Long arm Length : 1130mm(44.5in.)

Machine with Canopy and Rubber crawler, without bucket.

- Do not attempt to lift or hold any load that is greater than these rated values at their specified load radii and height.
- The rated lift capacities are based on the machine being level and situated on a firm supporting surface.
For safe lifting, the operator is expected to make due allowance for the particular job conditions, such as soft or uneven ground, non-level condition, load to the machine sides, hazardous conditions, experience of personnel, etc.
- The load safety device shall be equipped for lifting load.
- The overload warning switch shall be turned on when the machine is used for lifting load.



- The loads in the charts do not exceed 87% of hydraulic lift capacity or 75 % of tipping load.
- The load point is the bucket hinge pin.



UNITS : lbs.

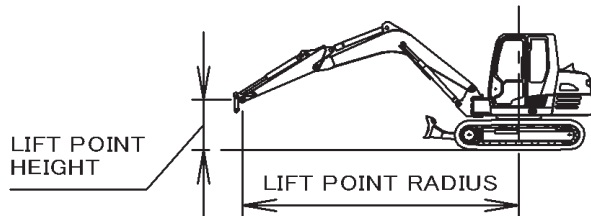
| LIFTING CAPACITIES Over Front ; Blade DOWN | | | | | LIFTING CAPACITIES Over Front ; Blade UP | | | | | LIFTING CAPACITIES ; Over Side (Crawler width 1300mm (51in.)) | | | | | LIFTING CAPACITIES ; Over Side (Crawler width 980mm (39in.)) | | | | | LIFT POINT HEIGHT (ft) | |
|---|-----|-----|------|------|---|-----|-----|------|------|--|-----|-----|------|------|---|-----|-----|-----|------|---------------------------------|------------|
| LIFT POINT RADIUS (ft) | | | | | LIFT POINT RADIUS (ft) | | | | | LIFT POINT RADIUS (ft) | | | | | LIFT POINT RADIUS (ft) | | | | | | |
| MAX | 10 | 8 | 6 | 4 | MAX | 10 | 8 | 6 | 4 | MAX | 10 | 8 | 6 | 4 | MAX | 10 | 8 | 6 | 4 | | |
| | | 560 | | | | | 560 | | | | | 560 | | | | | 560 | | | | 8 |
| 624 | 635 | 604 | | | 515 | 578 | 604 | | | 597 | 635 | 604 | | | 462 | 518 | 604 | | | | 6 |
| 588 | 674 | 791 | 969 | | 461 | 568 | 788 | 969 | | 535 | 659 | 791 | 969 | | 413 | 509 | 701 | 969 | | | 4 |
| 555 | 710 | 960 | 1546 | | 441 | 553 | 754 | 1121 | | 513 | 643 | 882 | 1330 | | 394 | 494 | 669 | 975 | | | 2 |
| 526 | 693 | 981 | 1530 | | 445 | 539 | 727 | 1074 | | 519 | 629 | 854 | 1281 | | 398 | 480 | 643 | 931 | | | 0 (Ground) |
| 501 | 606 | 876 | 1314 | 1579 | 480 | 532 | 715 | 1063 | 1579 | 501 | 606 | 840 | 1270 | 1579 | 428 | 473 | 631 | 922 | 1579 | | -2 |
| | | 691 | 1039 | 1936 | | | 691 | 1039 | 1936 | | | 691 | 1039 | 1936 | | | 632 | 928 | 1690 | | -4 |
| | | 659 | | | | | 659 | | | | | 659 | | | | | 659 | | | | -6 |

EXCAVATOR MODEL TB230

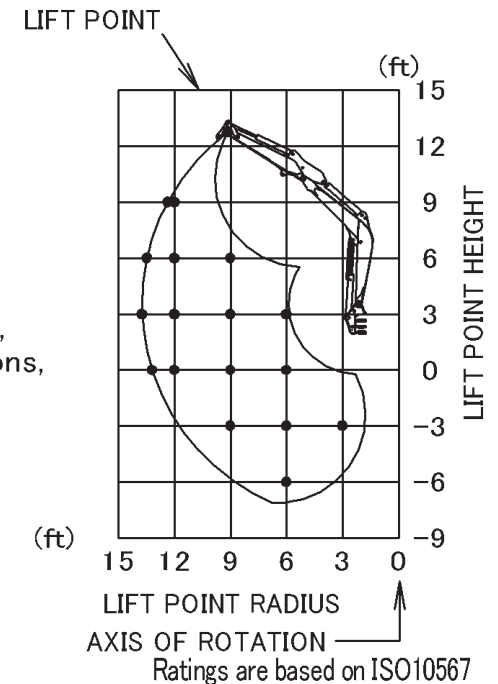
Long arm Length : 1445mm(56.9in.)

Machine with Canopy and Rubber crawler, without bucket.

- Do not attempt to lift or hold any load that is greater than these rated values at their specified load radii and height.
- The rated lift capacities are based on the machine being level and situated on a firm supporting surface.
For safe lifting, the operator is expected to make due allowance for the particular job conditions, such as soft or uneven ground, non-level condition, load to the machine sides, hazardous conditions, experience of personnel, etc.
- The load safety device shall be equipped for lifting load.
- The overload warning switch shall be turned on when the machine is used for lifting load.



- The loads in the charts do not exceed 87% of hydraulic lift capacity or 75 % of tipping load.
- The load point is the bucket hinge pin.



UNITS : lbs.

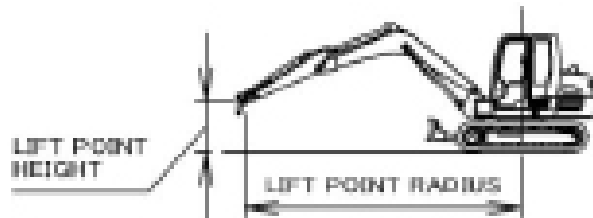
| LIFTING CAPACITIES Over Front; Blade DOWN | | | | | LIFTING CAPACITIES Over Front; Blade UP | | | | | LIFTING CAPACITIES Over Side | | | | LIFT POINT HEIGHT (ft) | |
|---|------|------|------|------|---|------|------|------|------|------------------------------|------|------|------|------------------------|------------|
| LIFT POINT RADIUS (ft) | | | | | LIFT POINT RADIUS (ft) | | | | | LIFT POINT RADIUS (ft) | | | | | |
| MAX | 12 | 9 | 6 | 3 | MAX | 12 | 9 | 6 | 3 | MAX | 12 | 9 | 6 | 3 | |
| 1095 | 1084 | | | | 1064 | 1084 | | | | 959 | 1007 | | | | 9 |
| 1109 | 1156 | 1362 | | | 919 | 1098 | 1362 | | | 829 | 989 | 1362 | | | 6 |
| 1143 | 1295 | 1812 | 3168 | | 878 | 1065 | 1637 | 3006 | | 790 | 957 | 1454 | 2574 | | 3 |
| 1186 | 1361 | 2031 | 3306 | | 915 | 1039 | 1577 | 2916 | | 822 | 932 | 1397 | 2491 | | 0 (Ground) |
| | | 1899 | 3184 | 3113 | | | 1565 | 2925 | 3113 | | | 1385 | 2500 | 3113 | -3 |
| | | | 2038 | | | | | 2038 | | | | | 2038 | | -6 |

EXCAVATOR MODEL TB235-2

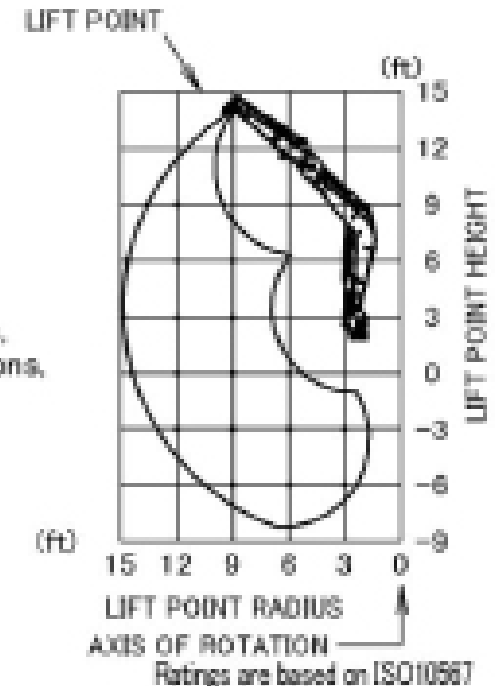
Long arm Length : 1450mm(57.1in.)

Machine with Canopy and Rubber crawler, without bucket.

- Do not attempt to lift or hold any load that is greater than these rated values at their specified load radii and height.
- The rated lift capacities are based on the machine being level and situated on a firm supporting surface.
For safe lifting, the operator is expected to make due allowance for the particular job conditions, such as soft or uneven ground, non-level condition, load to the machine sides, hazardous conditions, experience of personnel, etc.
- The load safety device shall be equipped for lifting load.
- The overload warning switch shall be turned on when the machine is used for lifting load.



- The loads in the charts do not exceed 87% of hydraulic lift capacity or 75 % of tipping load.
- The load point is the bucket hinge pin.



UNITS : lbs.

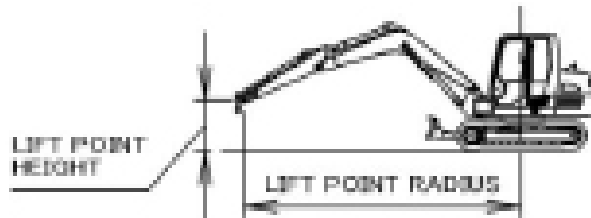
| LIFTING CAPACITIES Over Front; Blade DOWN | | | | | LIFTING CAPACITIES Over Front; Blade UP | | | | | LIFTING CAPACITIES Over Side | | | | | LIFT POINT HEIGHT (ft) |
|---|------|------|------|------|---|------|------|------|------|------------------------------|------|------|------|------|------------------------|
| LIFT POINT RADIUS (ft) | | | | | LIFT POINT RADIUS (ft) | | | | | LIFT POINT RADIUS (ft) | | | | | |
| MAX | 12 | 9 | 6 | 3 | MAX | 12 | 9 | 6 | 3 | MAX | 12 | 9 | 6 | 3 | |
| 1365 | 1374 | | | | 1021 | 1270 | | | | 1006 | 1242 | | | | 9 |
| 1352 | 1600 | 1939 | | | 888 | 1254 | 1939 | | | 879 | 1227 | 1899 | | | 6 |
| 1433 | 1886 | 2683 | | | 846 | 1198 | 1844 | | | 839 | 1174 | 1766 | | | 3 |
| 1617 | 2079 | 3081 | 2841 | | 876 | 1157 | 1762 | 2841 | | 867 | 1134 | 1690 | 2841 | | (@Swat) |
| | 2020 | 3019 | 5176 | 3558 | | 1149 | 1748 | 3471 | 3558 | | 1127 | 1676 | 3140 | 3558 | -3 |
| | | 2383 | 3956 | 5847 | | | 1793 | 3562 | 5847 | | | 1718 | 3220 | 5847 | -6 |

EXCAVATOR MODEL TB235-2

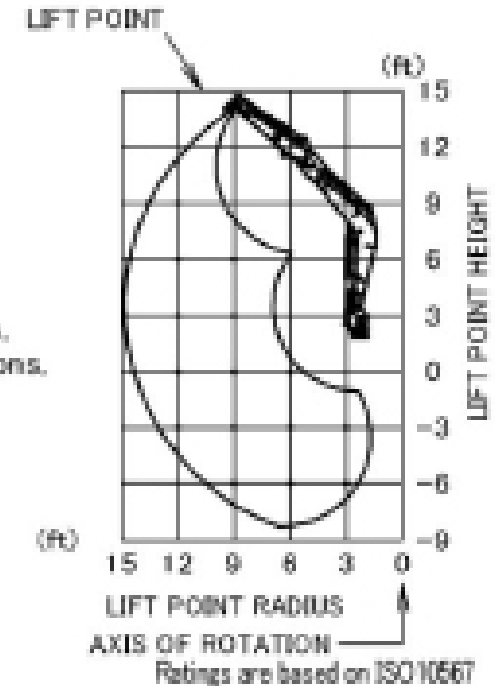
Long arm Length : 1450mm(57.1in.)

Machine with Cab and Rubber crawler, without bucket.

- Do not attempt to lift or hold any load that is greater than these rated values at their specified load radii and height.
- The rated lift capacities are based on the machine being level and situated on a firm supporting surface.
For safe lifting, the operator is expected to make due allowance for the particular job conditions, such as soft or uneven ground, non-level condition, load to the machine sides, hazardous conditions, experience of personnel, etc.
- The load safety device shall be equipped for lifting load.
- The overload warning switch shall be turned on when the machine is used for lifting load.



- The loads in the charts do not exceed 87% of hydraulic lift capacity or 75 % of tipping load.
- The load point is the bucket hinge pin.

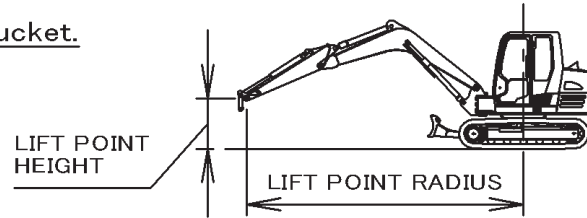


UNITS : lbs.

| LIFTING CAPACITIES Over Front; Blade DOWN | | | | | LIFTING CAPACITIES Over Front; Blade UP | | | | | LIFTING CAPACITIES Over Side | | | | | LIFT POINT HEIGHT (ft) |
|--|------|------|------|------|--|------|------|------|------|---------------------------------|------|------|------|------|---------------------------------|
| LIFT POINT RADIUS (ft) | | | | | LIFT POINT RADIUS (ft) | | | | | LIFT POINT RADIUS (ft) | | | | | |
| MAX | 12 | 9 | 6 | 3 | MAX | 12 | 9 | 6 | 3 | MAX | 12 | 9 | 6 | 3 | |
| 1385 | 1374 | | | | 1123 | 1374 | | | | 1076 | 1323 | | | | 9 |
| 1352 | 1600 | 1939 | | | 981 | 1376 | 1939 | | | 943 | 1310 | 1939 | | | 6 |
| 1433 | 1888 | 2683 | | | 937 | 1320 | 2023 | | | 901 | 1256 | 1885 | | | 3 |
| 1617 | 2079 | 3081 | 2841 | | 971 | 1279 | 1941 | 2841 | | 932 | 1217 | 1809 | 2841 | | 0(Ground) |
| | 2020 | 3019 | 5176 | 3558 | | 1270 | 1927 | 3812 | 3558 | | 1209 | 1796 | 3354 | 3558 | -3 |
| | | 2383 | 3956 | 5847 | | | 1972 | 3903 | 5847 | | | 1837 | 3434 | 5847 | -6 |

EXCAVATOR MODEL TB240

Long arm Length : 1600mm(63in.)
Machine with Canopy and Rubber crawler, without bucket.

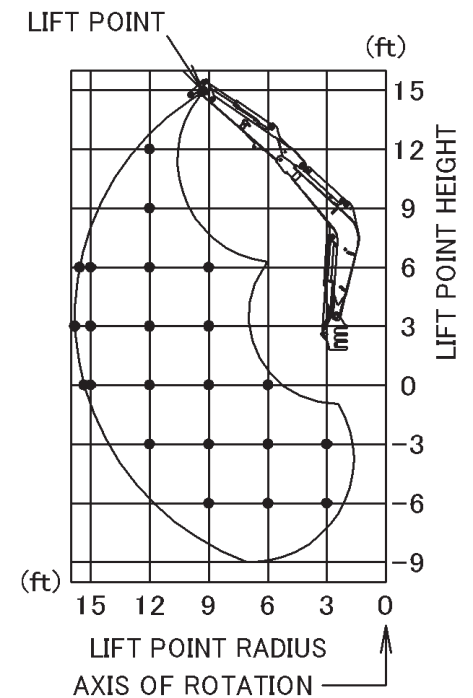


- The loads in the charts do not exceed 87% of hydraulic lift capacity or 75 % of tipping load.
- The load point is the bucket hinge pin.

- Do not attempt to lift or hold any load that is greater than these rated values at their specified load radii and height.
- The rated lift capacities are based on the machine being level and situated on a firm supporting surface.
 For safe lifting, the operator is expected to make due allowance for the particular job conditions, such as soft or uneven ground, non-level condition, load to the machine sides, hazardous conditions, experience of personnel, etc.
- The load safety device shall be equipped for lifting load.
- The overload warning switch shall be turned on when the machine is used for lifting load.

UNITS : lbs.

| LIFTING CAPACITIES Over Front; Blade DOWN | | | | | LIFTING CAPACITIES Over Front; Blade UP | | | | | LIFTING CAPACITIES Over Side | | | | | LIFT POINT HEIGHT (ft) | | | |
|---|------|------|------|------|---|------|------|------|------|------------------------------|------|-----|------|------|------------------------|------|------|------------|
| LIFT POINT RADIUS (ft) | | | | | LIFT POINT RADIUS (ft) | | | | | LIFT POINT RADIUS (ft) | | | | | | | | |
| MAX | 15 | 12 | 9 | 6 | 3 | MAX | 15 | 12 | 9 | 6 | 3 | MAX | 15 | 12 | 9 | 6 | 3 | |
| | | 1464 | | | | | | 1464 | | | | | | 1464 | | | | 12 |
| | | 1487 | | | | | | 1487 | | | | | | 1487 | | | | 9 |
| 1483 | 1631 | 1809 | 2211 | | | 1093 | 1163 | 1672 | 2211 | | | 960 | 1022 | 1469 | 2211 | | | 6 |
| 1573 | 1763 | 2189 | 3161 | | | 1052 | 1138 | 1606 | 2437 | | | 922 | 997 | 1404 | 2110 | | | 3 |
| 1780 | 1843 | 2462 | 3683 | 2807 | | 1084 | 1119 | 1555 | 2343 | 2807 | | 948 | 978 | 1356 | 2019 | 2807 | | 0 (Ground) |
| | | 2482 | 3677 | 4966 | 3572 | | | 1538 | 2321 | 4554 | 3572 | | | 1339 | 1998 | 3793 | 3572 | -3 |
| | | | 3131 | 5217 | 5579 | | | | 2353 | 4635 | 5579 | | | | 2029 | 3868 | 5579 | -6 |

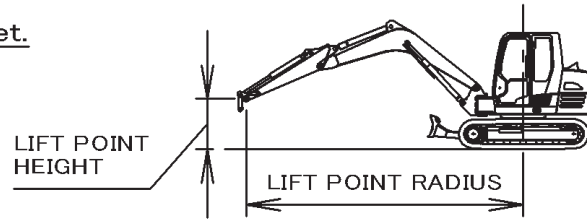


Ratings are based on ISO10567

EXCAVATOR MODEL TB240

Long arm Length : 1600mm(63in.)

Machine with Cab and Rubber crawler, without bucket.

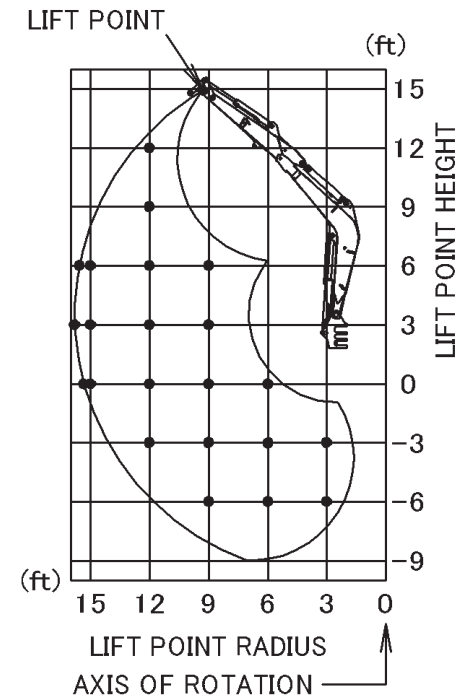


- The loads in the charts do not exceed 87% of hydraulic lift capacity or 75 % of tipping load.
- The load point is the bucket hinge pin.

- Do not attempt to lift or hold any load that is greater than these rated values at their specified load radii and height.
- The rated lift capacities are based on the machine being level and situated on a firm supporting surface.
For safe lifting, the operator is expected to make due allowance for the particular job conditions, such as soft or uneven ground, non-level condition, load to the machine sides, hazardous conditions, experience of personnel, etc.
- The load safety device shall be equipped for lifting load.
- The overload warning switch shall be turned on when the machine is used for lifting load.

UNITS : lbs.

| LIFTING CAPACITIES Over Front; Blade DOWN | | | | | | LIFTING CAPACITIES Over Front; Blade UP | | | | | | LIFTING CAPACITIES Over Side | | | | | | LIFT POINT HEIGHT (ft) |
|---|------|------|------|------|------|---|------|------|------|------|------|------------------------------|------|------|------|------|------|------------------------|
| LIFT POINT RADIUS (ft) | | | | | | LIFT POINT RADIUS (ft) | | | | | | LIFT POINT RADIUS (ft) | | | | | | |
| MAX | 15 | 12 | 9 | 6 | 3 | MAX | 15 | 12 | 9 | 6 | 3 | MAX | 15 | 12 | 9 | 6 | 3 | |
| | | 1464 | | | | | | 1464 | | | | | | 1464 | | | | 12 |
| | | 1487 | | | | | | 1487 | | | | | | 1487 | | | | 9 |
| 1483 | 1631 | 1809 | 2211 | | | 1106 | 1176 | 1690 | 2211 | | | 1049 | 1115 | 1594 | 2211 | | | 6 |
| 1573 | 1763 | 2189 | 3161 | | | 1065 | 1151 | 1623 | 2463 | | | 1009 | 1090 | 1529 | 2291 | | | 3 |
| 1780 | 1843 | 2462 | 3683 | 2807 | | 1097 | 1132 | 1573 | 2368 | 2807 | | 1039 | 1071 | 1480 | 2200 | 2807 | | 0 (Ground) |
| | | 2482 | 3677 | 4966 | 3572 | | | 1556 | 2347 | 4603 | 3572 | | | 1463 | 2180 | 4126 | 3572 | -3 |
| | | | 3131 | 5217 | 5579 | | | | 2379 | 4684 | 5579 | | | | 2211 | 4201 | 5579 | -6 |



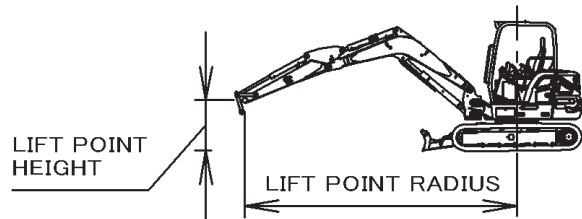
Ratings are based on ISO10567

EXCAVATOR MODEL TB260

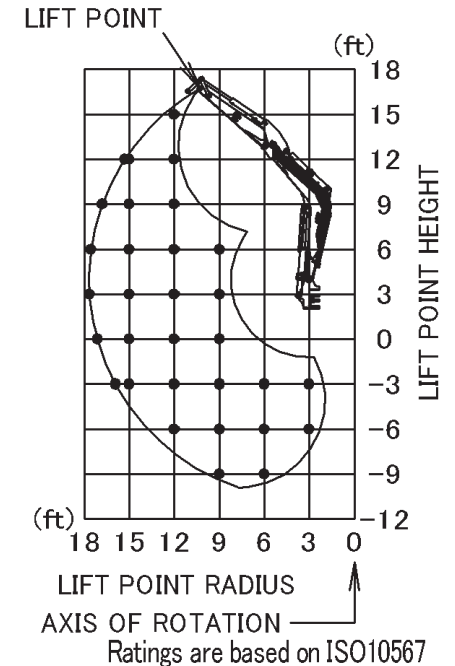
Long arm Length : 1780mm(70.1in.)

Machine with Canopy and Rubber crawler, without bucket.

- Do not attempt to lift or hold any load that is greater than these rated values at their specified load radii and height.
- The rated lift capacities are based on the machine being level and situated on a firm supporting surface.
For safe lifting, the operator is expected to make due allowance for the particular job conditions, such as soft or uneven ground, non-level condition, load to the machine sides, hazardous conditions, experience of personnel, etc.
- The load safety device shall be equipped for lifting load.
- The overload warning switch shall be turned on when the machine is used for lifting load.



- The loads in the charts do not exceed 87% of hydraulic lift capacity or 75 % of tipping load.
- The load point is the bucket hinge pin.



UNITS : lbs.

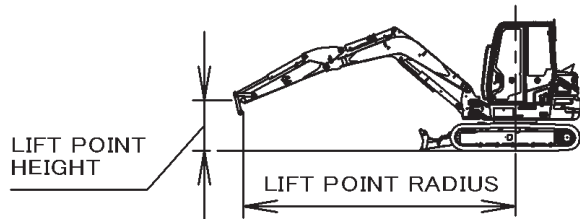
| LIFTING CAPACITIES Over Front ; Blade DOWN | | | | | | LIFTING CAPACITIES Over Front ; Blade UP | | | | | | LIFTING CAPACITIES Over Side | | | | | | LIFT POINT HEIGHT (ft) | |
|--|------|------|------|------|------|--|------|------|------|------|------|------------------------------|------|------|------|------|------|------------------------|------------|
| LIFT POINT RADIUS (ft) | | | | | | LIFT POINT RADIUS (ft) | | | | | | LIFT POINT RADIUS (ft) | | | | | | | |
| MAX | 15 | 12 | 9 | 6 | 3 | MAX | 15 | 12 | 9 | 6 | 3 | MAX | 15 | 12 | 9 | 6 | 3 | | |
| | | 2185 | | | | | | 2185 | | | | | | 2185 | | | | | 15 |
| 2052 | 2272 | 2011 | | | | 2020 | 2098 | 2011 | | | | 1609 | 1673 | 2011 | | | | | 12 |
| 1979 | 2316 | 2354 | | | | 1712 | 2083 | 2354 | | | | 1358 | 1658 | 2354 | | | | | 9 |
| 2014 | 2592 | 3025 | 4215 | | | 1570 | 2025 | 2876 | 4215 | | | 1239 | 1603 | 2264 | 3591 | | | | 6 |
| 2152 | 2922 | 3748 | 5967 | | | 1528 | 1958 | 2734 | 4335 | | | 1201 | 1540 | 2131 | 3279 | | | | 3 |
| 2432 | 3150 | 4296 | 6660 | | | 1576 | 1907 | 2689 | 4184 | | | 1235 | 1491 | 2080 | 3142 | | | | 0 (Ground) |
| 2807 | 3114 | 4357 | 6524 | 6058 | 4973 | 1745 | 1891 | 2654 | 4160 | 6058 | 4973 | 1366 | 1476 | 2047 | 3120 | 6058 | 4973 | | -3 |
| | | 3854 | 5700 | 9536 | 7263 | | | 2682 | 4214 | 9360 | 7263 | | | 2073 | 3169 | 6414 | 7263 | | -6 |
| | | | 3569 | 5930 | | | | | 3569 | 5930 | | | | | 3318 | 5930 | | | -9 |

EXCAVATOR MODEL TB260

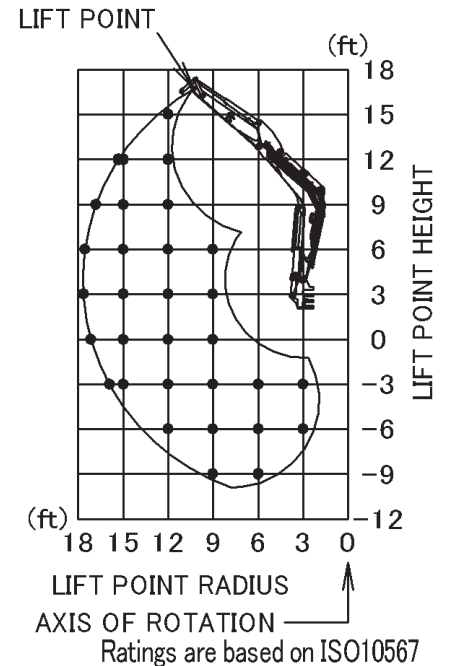
Long arm Length : 1780mm(70.1in.)

Machine with Cab and Rubber crawler, without bucket.

- Do not attempt to lift or hold any load that is greater than these rated values at their specified load radii and height.
- The rated lift capacities are based on the machine being level and situated on a firm supporting surface.
For safe lifting, the operator is expected to make due allowance for the particular job conditions, such as soft or uneven ground, non-level condition, load to the machine sides, hazardous conditions, experience of personnel, etc.
- The load safety device shall be equipped for lifting load.
- The overload warning switch shall be turned on when the machine is used for lifting load.



- The loads in the charts do not exceed 87% of hydraulic lift capacity or 75 % of tipping load.
- The load point is the bucket hinge pin.



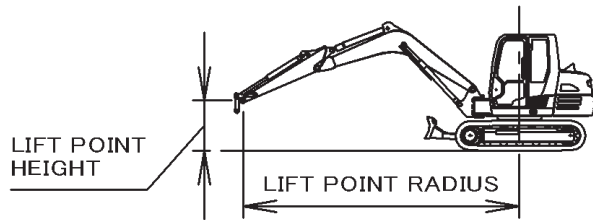
UNITS : lbs.

| LIFTING CAPACITIES Over Front ; Blade DOWN | | | | | | LIFTING CAPACITIES Over Front ; Blade UP | | | | | | LIFTING CAPACITIES Over Side | | | | | | LIFT POINT HEIGHT (ft) | |
|--|------|------|------|------|------|--|------|------|------|------|------|------------------------------|------|------|------|------|------|------------------------|------------|
| LIFT POINT RADIUS (ft) | | | | | | LIFT POINT RADIUS (ft) | | | | | | LIFT POINT RADIUS (ft) | | | | | | | |
| MAX | 15 | 12 | 9 | 6 | 3 | MAX | 15 | 12 | 9 | 6 | 3 | MAX | 15 | 12 | 9 | 6 | 3 | | |
| | | 2185 | | | | | | 2185 | | | | | | 2185 | | | | | 15 |
| 2052 | 2272 | 2011 | | | | 2052 | 2243 | 2011 | | | | 1767 | 1835 | 2011 | | | | | 12 |
| 1979 | 2316 | 2354 | | | | 1838 | 2228 | 2354 | | | | 1499 | 1821 | 2354 | | | | | 9 |
| 2014 | 2592 | 3025 | 4215 | | | 1689 | 2171 | 3025 | 4215 | | | 1373 | 1766 | 2480 | 3917 | | | | 6 |
| 2152 | 2922 | 3748 | 5967 | | | 1646 | 2104 | 2930 | 4641 | | | 1334 | 1702 | 2346 | 3605 | | | | 3 |
| 2432 | 3150 | 4296 | 6660 | | | 1699 | 2053 | 2889 | 4490 | | | 1373 | 1654 | 2300 | 3468 | | | | 0 (Ground) |
| 2807 | 3114 | 4357 | 6524 | 6058 | 4973 | 1880 | 2037 | 2854 | 4467 | 6058 | 4973 | 1517 | 1639 | 2267 | 3446 | 6058 | 4973 | | -3 |
| | | 3854 | 5700 | 9536 | 7263 | | | 2882 | 4520 | 9536 | 7263 | | | 2293 | 3494 | 7044 | 7263 | | -6 |
| | | | 3569 | 5930 | | | | | 3569 | 5930 | | | | | 3569 | 5930 | | | -9 |

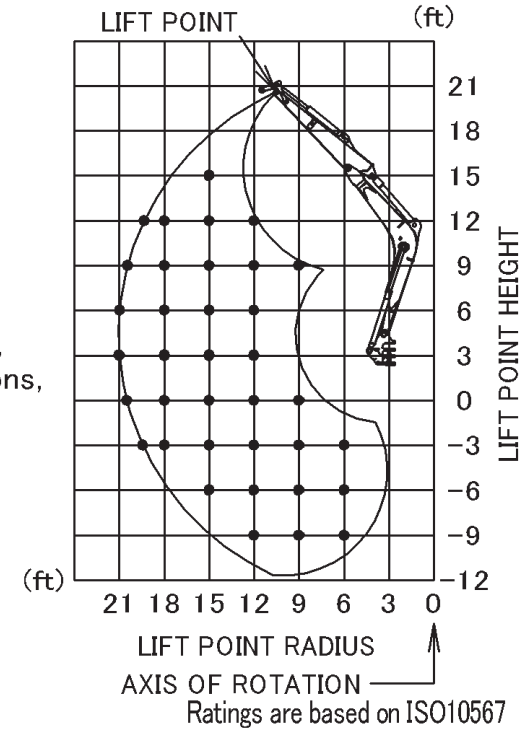
EXCAVATOR MODEL TB290

Long arm Length : 2130mm(83.9in.)
Machine with Cab and Rubber crawler, without bucket.

- Do not attempt to lift or hold any load that is greater than these rated values at their specified load radii and height.
- The rated lift capacities are based on the machine being level and situated on a firm supporting surface.
 For safe lifting, the operator is expected to make due allowance for the particular job conditions, such as soft or uneven ground, non-level condition, load to the machine sides, hazardous conditions, experience of personnel, etc.
- The load safety device shall be equipped for lifting load.
- The overload warning switch shall be turned on when the machine is used for lifting load.



- The loads in the charts do not exceed 87% of hydraulic lift capacity or 75 % of tipping load.
- The load point is the bucket hinge pin.



UNITS : lbs.

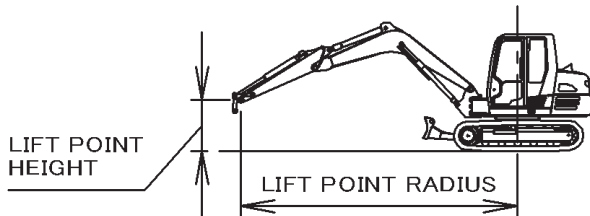
| LIFTING CAPACITIES Over Front ; Blade DOWN | | | | | | LIFTING CAPACITIES Over Front ; Blade UP | | | | | | LIFTING CAPACITIES Over Side | | | | | | LIFT POINT HEIGHT (ft) | |
|--|------|------|------|-------|-------|--|------|------|------|------|-------|------------------------------|------|------|------|------|-------|------------------------|------------|
| LIFT POINT RADIUS (ft) | | | | | | LIFT POINT RADIUS (ft) | | | | | | LIFT POINT RADIUS (ft) | | | | | | | |
| MAX | 18 | 15 | 12 | 9 | 6 | MAX | 18 | 15 | 12 | 9 | 6 | MAX | 18 | 15 | 12 | 9 | 6 | | |
| | | 3461 | | | | | | 3461 | | | | | | 3365 | | | | | 15 |
| 2491 | 3721 | 3654 | 3552 | | | 2491 | 3031 | 3654 | 3552 | | | 2156 | 2456 | 3324 | 3552 | | | | 12 |
| 2478 | 3947 | 4225 | 4748 | 5806 | | 2410 | 2982 | 3986 | 4748 | 5806 | | 1938 | 2408 | 3217 | 4555 | 5806 | | | 9 |
| 2552 | 4323 | 5001 | 6379 | | | 2278 | 2904 | 3833 | 5387 | | | 1824 | 2334 | 3072 | 4264 | | | | 6 |
| 2719 | 4701 | 5740 | 7802 | | | 2241 | 2822 | 3683 | 5101 | | | 1788 | 2255 | 2929 | 3998 | | | | 3 |
| 3049 | 4944 | 6217 | 8524 | 6728 | | 2295 | 2757 | 3572 | 4931 | 6728 | | 1828 | 2193 | 2824 | 3839 | 5829 | | | 0 (Ground) |
| 3528 | 4911 | 6305 | 8547 | 9670 | 6180 | 2461 | 2726 | 3515 | 4865 | 7753 | 6180 | 1957 | 2163 | 2770 | 3778 | 5818 | 6180 | | -3 |
| | | 5887 | 7937 | 11424 | 9437 | | | 3517 | 4876 | 7818 | 9437 | | | 2772 | 3788 | 5877 | 9437 | | -6 |
| | | | 6488 | 9187 | 13753 | | | | 4966 | 7966 | 13753 | | | | 3872 | 6010 | 12684 | | -9 |

EXCAVATOR MODEL TB280FR

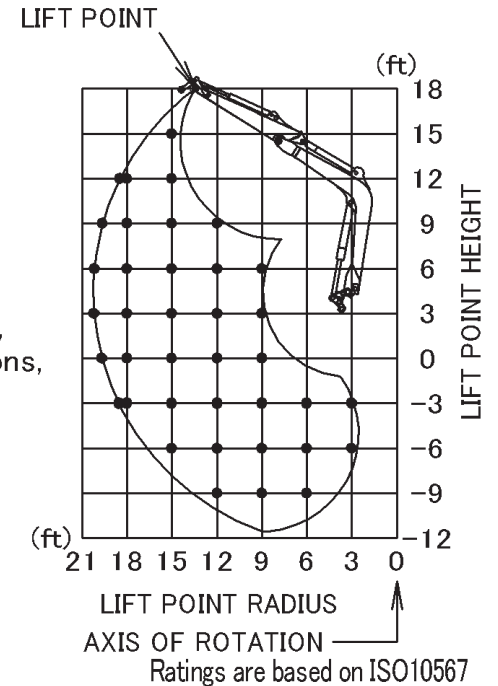
Long arm Length : 2000mm(78.7in.)

Machine with Cab and Rubber crawler, without bucket.

- Do not attempt to lift or hold any load that is greater than these rated values at their specified load radii and height.
- The rated lift capacities are based on the machine being level and situated on a firm supporting surface.
For safe lifting, the operator is expected to make due allowance for the particular job conditions, such as soft or uneven ground, non-level condition, load to the machine sides, hazardous conditions, experience of personnel, etc.
- The load safety device shall be equipped for lifting load.
- The overload warning switch shall be turned on when the machine is used for lifting load.



- The loads in the charts do not exceed 87% of hydraulic lift capacity or 75 % of tipping load.
- The load point is the bucket hinge pin.



UNITS : lbs.

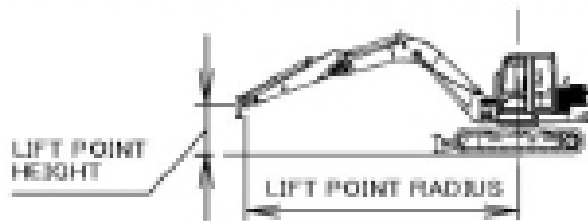
| LIFTING CAPACITIES Over Front; Blade DOWN | | | | | | | LIFTING CAPACITIES Over Front; Blade UP | | | | | | | LIFTING CAPACITIES Over Side | | | | | | | LIFT POINT HEIGHT (ft) |
|--|------|------|------|-------|-------|------|--|------|------|------|------|-------|------|---------------------------------|------|------|------|------|-------|------|---------------------------------|
| MAX | 18 | 15 | 12 | 9 | 6 | 3 | MAX | 18 | 15 | 12 | 9 | 6 | 3 | MAX | 18 | 15 | 12 | 9 | 6 | 3 | |
| | | 3779 | | | | | | | 3779 | | | | | | | 3307 | | | | | 15 |
| 2218 | 3016 | 3776 | | | | | 2218 | 2787 | 3776 | | | | | 2218 | 2409 | 3280 | | | | | 12 |
| 2205 | 3210 | 3837 | 5133 | | | | 2205 | 2751 | 3692 | 5133 | | | | 2043 | 2374 | 3183 | 4521 | | | | 9 |
| 2285 | 3408 | 4050 | 5363 | 8407 | | | 2227 | 2680 | 3549 | 4992 | 7875 | | | 1913 | 2305 | 3046 | 4243 | 6514 | | | 6 |
| 2466 | 3725 | 4483 | 6078 | 5481 | | | 2183 | 2602 | 3404 | 4719 | 5481 | | | 1870 | 2230 | 2907 | 3984 | 5481 | | | 3 |
| 2726 | 4064 | 5011 | 6897 | 6829 | | | 2232 | 2539 | 3294 | 4549 | 6829 | | | 1908 | 2168 | 2801 | 3822 | 5841 | | | 0(Ground) |
| 3293 | 4198 | 5330 | 7261 | 9732 | 6228 | 5955 | 2408 | 2507 | 3235 | 4476 | 7118 | 6228 | 5955 | 2054 | 2137 | 2744 | 3753 | 5815 | 6228 | 5955 | -3 |
| | | 5153 | 7001 | 10241 | 9350 | 8052 | | | 3232 | 4477 | 7165 | 9350 | 8052 | | | 2741 | 3754 | 5859 | 9350 | 8052 | -6 |
| | | | 5780 | 8394 | 13519 | | | | | 4561 | 7301 | 13519 | | | | | 3834 | 5984 | 12953 | | -9 |

EXCAVATOR MODEL TB2150

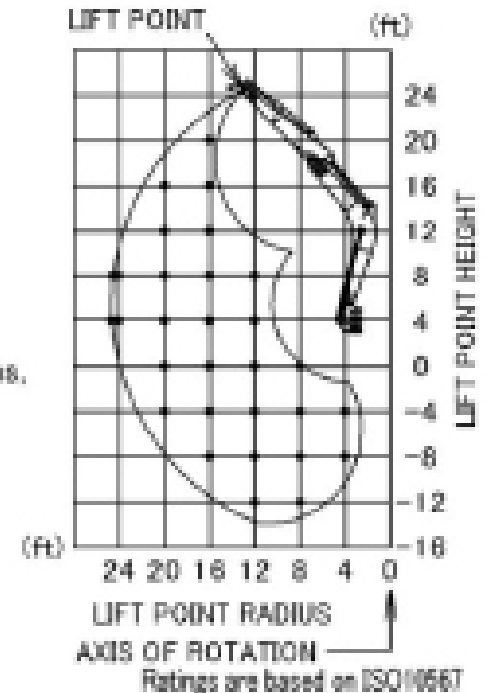
Long arm Length : 2570mm(101.2in.)

Machine with Cab and Rubber crawler, without bucket.

- Do not attempt to lift or hold any load that is greater than these rated values at their specified load radii and height.
- The rated lift capacities are based on the machine being level and situated on a firm supporting surface.
For safe lifting, the operator is expected to make due allowance for the particular job conditions, such as soft or uneven ground, non-level condition, load to the machine sides, hazardous conditions, experience of personnel, etc.
- The load safety device shall be equipped for lifting load.
- The overload warning switch shall be turned on when the machine is used for lifting load.



- The loads in the charts do not exceed 87% of hydraulic lift capacity or 75 % of tipping load.
- The load point is the bucket hinge pin.



UNITS : lbs.

| LIFTING CAPACITIES Over Front ; Blade DOWN | | | | | | | LIFTING CAPACITIES Over Front ; Blade UP | | | | | | | LIFTING CAPACITIES Over Side | | | | | | | LIFT POINT HEIGHT (ft) |
|---|------|------|-------|-------|-------|-------|---|------|------|-------|-------|-------|-------|---------------------------------|------|------|------|-------|-------|-------|---------------------------------|
| LIFT POINT RADIUS (ft) | | | | | | | LIFT POINT RADIUS (ft) | | | | | | | LIFT POINT RADIUS (ft) | | | | | | | |
| MAX | 24 | 20 | 16 | 12 | 8 | 4 | MAX | 24 | 20 | 16 | 12 | 8 | 4 | MAX | 24 | 20 | 16 | 12 | 8 | 4 | |
| | | | 5611 | | | | | | | 5611 | | | | | | | 5611 | | | | 20 |
| | | 8033 | 5657 | | | | | | 8033 | 5657 | | | | | | 5943 | 5657 | | | | 16 |
| | | 8577 | 6862 | | | | | | 8577 | 6862 | | | | | | 5848 | 6862 | | | | 12 |
| 3624 | 5034 | 7477 | 8848 | 12235 | | | 3624 | 5034 | 7477 | 8848 | 12235 | | | 3624 | 4288 | 5668 | 7869 | 12028 | | | 8 |
| 3865 | 5714 | 8467 | 10883 | 16782 | | | 3865 | 5714 | 7719 | 10750 | 16782 | | | 3865 | 4203 | 5472 | 7481 | 11182 | | | 4 |
| | | 9174 | 12188 | 17124 | 5904 | | | | 7555 | 10456 | 16447 | 5904 | | | | 5321 | 7215 | 10796 | 5904 | | 0(Ground) |
| | | 9243 | 12467 | 18415 | 11280 | 8967 | | | 7484 | 10333 | 16349 | 11280 | 8967 | | | 5255 | 7105 | 10712 | 11280 | 8967 | -4 |
| | | | 11433 | 16547 | 18257 | 13936 | | | | 10375 | 18460 | 18257 | 13936 | | | | 7142 | 10807 | 18257 | 13936 | -8 |
| | | | | 12087 | 19351 | | | | | | 12087 | 19351 | | | | | | 11112 | 19351 | | -12 |