

THE BASIC

TRENCH BOXES & BEDDING BOXES

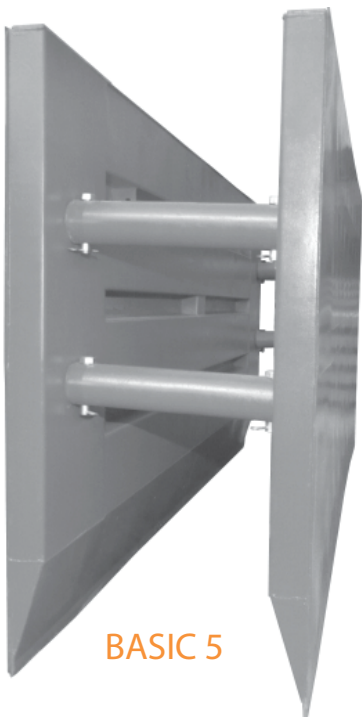
TRENCHING MADE AFFORDABLE

A FULL VARIETY OF BOXES AVAILABLE

- ALL STEEL
- SOLID WELDED
- OPTIONS AVAILABLE
- ACCESSORIES



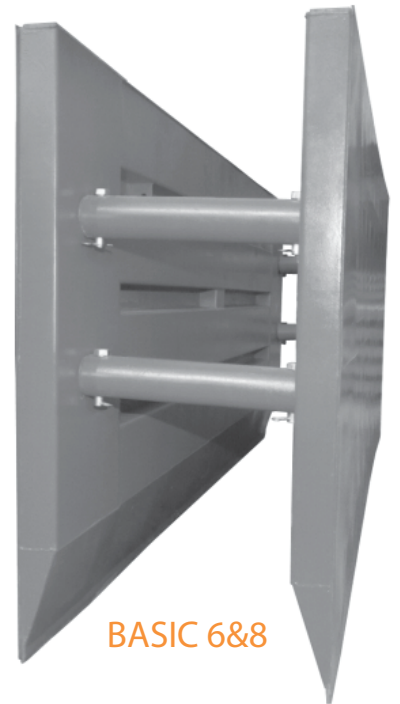
- TAMPING BLOCK
- LIFTING LUGS



BASIC 5

Designed and Manufactured by

Giving Support to the People in the Trenches™
Kundel
INDUSTRIES
Est. 1987



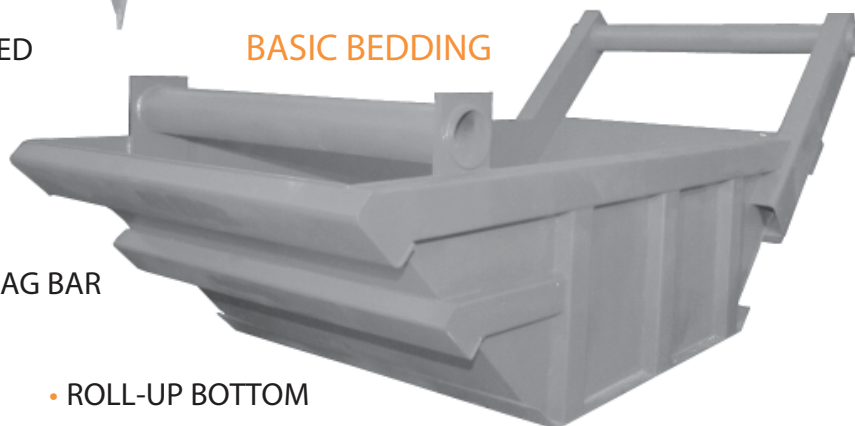
BASIC 6&8

- SAFETY PAINTED

- HIGH TAPERED

BASIC BEDDING

- LIFTABLE



- WALK BAR

- DRAG BAR

- ROLL-UP BOTTOM

BUILT TO MAKE YOU MONEY

THE BASIC 3

ALL STEEL TRENCH BOX

The *Basic 3* model is a series of shields for small excavators as well as rubber tired backhoes. Built with high standards to provide reliability in the field. This box is built tough and priced right. An excellent range of sizes is provided for the B3 model. This is a great model for Municipalities, Plumbers and Industrial maintenance Crews. Great shield for spot repairs, taps, minor mainline work.

Vertical Clearances				
Height (ft)	4'	6'	7.5'	
Rear Pipe (in)	27	27	27	
Front Pipe (in)	27	27	27	

Horizontal Clearances						
Length (ft)	4'	5'	6'	7'	8'	10'
Front to Rear (in)	36"	48"	60"	72"	84"	108"

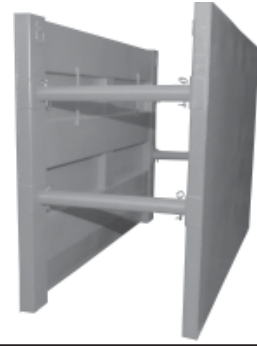
A Spreaders	
Length	Weight
18 in.	49 lb.
24 in.	64 lb.
30 in.	80 lb.
36 in.	95 lb.
42 in.	110 lb.
48 in.	125 lb.
54 in.	140 lb.
60 in.	155 lb.
66 in.	171 lb.
72 in.	186 lb.
96 in.	246 lb.
ADJ.	92 lb.
3" SPR SET OF 4	

FEATURES

- Tamping Blocks
- Lifting Lugs
- Forged Spreader Pins
- Solid Welded

ACCESSORIES

- 12" X 12" Cut Out
- Stacking Rings
- Tandum Connectors
- Lite Sling
- Drop Ons



Model	Weights & Price		Spreader Table	Ratings		
	Weight	Price		Depth Ratings		
Model - H x L Style	Weight	Price		A Soil	B Soil	C Soil
B3 - # X # - #	POUNDS			FEET		
B3 - 4' X 4' - ST	480		A	58'	32'	24'
B3 - 4' X 5' - ST	565		A	58'	32'	24'
B3 - 4' X 6' - ST	645		A	58'	32'	24'
B3 - 4' X 7' - ST	725		A	52'	30'	23'
B3 - 4' X 8' - ST	824		A	46'	26'	20'
B3 - 4' X 10' - ST	984		A	29'	17'	13'
B3 - 6' X 4' - K	675		A	58'	32'	24'
B3 - 6' X 5' - K	790		A	58'	32'	24'
B3 - 6' X 6' - K	900		A	58'	32'	24'
B3 - 6' X 7' - K	1040		A	53'	30'	23'
B3 - 6' X 8' - K	1155		A	47'	27'	21'
B3 - 6' X 10' - K	1386		A	30'	17'	14'
B3 - 7.5' X 8' - K	1395		A	47'	27'	21'
B3 - 7.5' X 10' - K	1695		A	30'	17'	14'

THE BASIC 5

ALL STEEL TRENCH BOX

The *Basic 5* model is a series of shields for the small excavators. Built to work well in 12' length sewer line installations. The weight, durability and depth ratings for this model are ideal for any contractor. If you have a machine in the 6 metric ton to 19 metric ton class, this is a great shield for them to consider. This will definitely provide the protection needed while increasing main line sewer production.

Vertical Clearances				
Height (ft)	4'	7.5'	(16')	
Rear Pipe (in)	32	46	46	
Front Pipe (in)	32	46	32	

Horizontal Clearances			
Length (ft)	12'	14'	16'
Front to Rear (in)	124"	148"	160"

3/4" Pounding Pads	14"	14"	26"
--------------------	-----	-----	-----

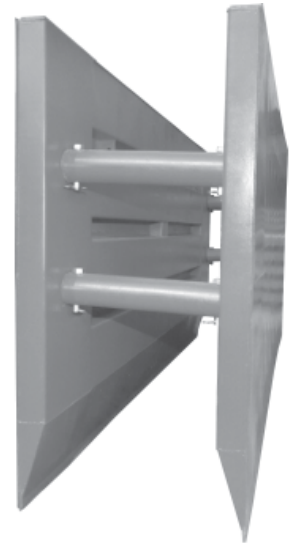
C Spreaders	
Length	Weight
18 in.	210 lb.
24 in.	267 lb.
30 in.	324 lb.
36 in.	381 lb.
42 in.	438 lb.
48 in.	496 lb.
54 in.	553 lb.
60 in.	610 lb.
72 in.	724 lb.
84 in.	838 lb.
96 in.	953 lb.
ADJ.	290 lb.
6" SPR SET OF 4	

FEATURES

- Tamping Blocks
- Lifting Lugs
- Forged Spreader Pins
- High Taper
- 3/8" x 3" Cutting Bar
- Solid Welded

ACCESSORIES

- Stacking Lugs & Plates
- Tandum Lugs & Plates
- Chain Slings
- Drop Ons

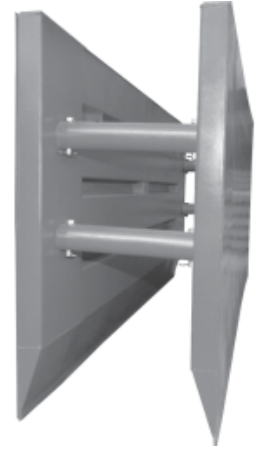


Model	Weights & Price		Spreader Table	Standard		
	Weight			Depth Ratings		
Model - H x L Style	Weight			A Soil	B Soil	C Soil
B5 - # X # - #	POUNDS			STANDARD		
B3 - 5' X 12' - K	2195		C	38'	22'	17'
B3 - 5' X 14' - K	2472		C	38'	22'	17'
B3 - 5' X 16' - K	2793		C	31'	18'	14'
B3 - 7.5' X 12' - K	3095		C	38'	22'	17'
B3 - 7.5' X 14' - K	3450		C	38'	22'	17'
B3 - 7.5' X 16' - K	4295		C	38'	22'	17'

THE BASIC

ALL STEEL TRENCH BOX

6 & 8



Both the *Basic 6&8's* are a perfect match for many of today's contractors. The 17' C-Soil Depth rating combined with sloping program will cover a maximum range of job situations. The weight and durability as well as its affordability make it a perfect match for excavators in the 19 metric ton to 24 metric ton class. More room allows for faster mainline production for jobs laying up to 18' lengths of pipe. An alternative depth rating is available. (25' C-Soil.)

FEATURES: • Tamping Blocks • Lifting Lugs
• Forged Pins • High Taper • 3/8"x 3" Cutting Bar
• Solid Welded

ACCESSORIES: • Stacking Plates & Lugs
• Tandem Lugs & Plates • Chain Slings • Drop Ons

Vertical Clearances			
Height (ft)	5'	7.5'	
Rear Pipe (in)	27	47	
Front Pipe (in)	27	26	

Horizontal Clearances				
Length (ft)	20'	*20'	24'	*24'
Front to Rear (in)	214"	182"	266"	206"

Pound Pads (in)	3/4"	50	50	74	74
-----------------	------	----	----	----	----

*Clearances with the increased depth rating.

E Spreaders	
Length	Weight
18 in.	307 lb.
24 in.	394 lb.
30 in.	480 lb.
36 in.	567 lb.
42 in.	654 lb.
48 in.	741 lb.
54 in.	827 lb.
60 in.	914 lb.
72 in.	1088 lb.
84 in.	1261 lb.
96 in.	1435 lb.
ADJ.	450 lb.
8" SPR SET OF 4	

Model	Weights & Price		Spreader Table	Standard		
				Depth Ratings		
Model - H x L Style	Weight		A Soil	B Soil	C Soil	
B# - # X # - #	POUNDS					FEET
B6 - 5' X 20' -K	4787		E	32'	19'	15'
B6 - 7.5' X 20' -K	6900		E	38'	22'	17'
B8 - 5' X 24' -K	5643		E	27'	16'	12'
B8 - 7.5' X 24' -K	7990		E	32'	19'	15'

BASIC 6&8: Extra Depth Available (25' C-Soil)

STYLE: K — Knife ST — Stacker Knife

THE BASIC

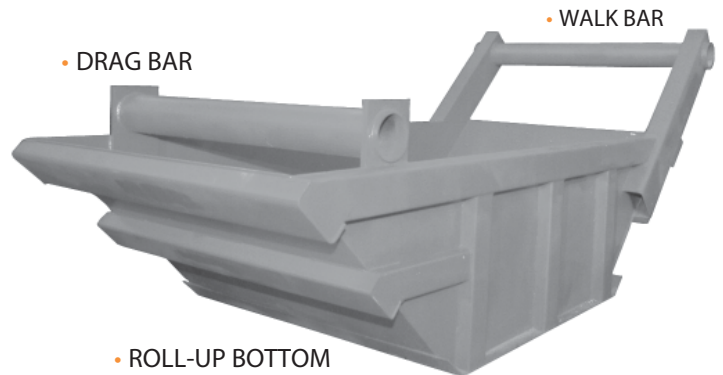
ALL STEEL

BEDDING

Walk Bar: The *Walk Bar* is standard on the basic stone box, and is solid welded creating an extra strong box.

Drag Bar: The *Drag Bar* is also standard on the basic stone box. It is welded to two heavy plates and inset from the front of the box. This helps strengthen the box and hold the sides in place.

Roll-up Bottom: The ends of the base are rolled up allowing for easy box movement.



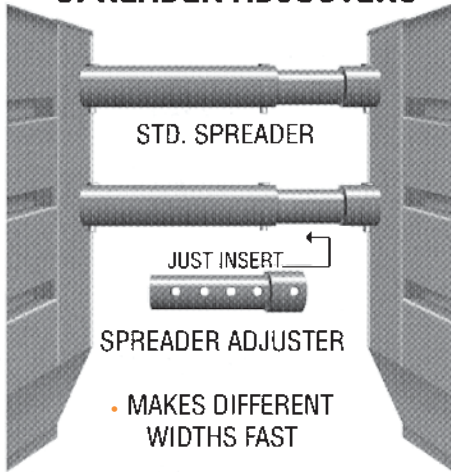
Model	Weight	Lengths		Widths		Heights	
		OD	ID	OD	ID	Walk Bar	Side
	Pounds	inches		inches		inches	
SB - 4.5 CYD	2735	168	143	64	50	72	42
SB - 6 CYD	2980	182	151	74	58	73	42
SB - 7.5 CYD	3810	182	151	87	73	73	42
SB - 9 CYD	4040	198	167	89	73	84	48

THE BASIC

ALL STEEL TRENCH BOX

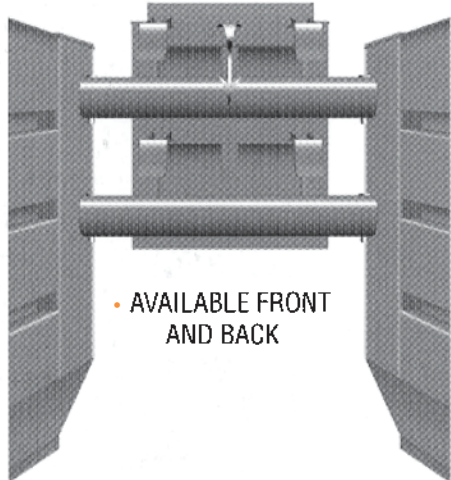
ACCESSORIES

• SPREADER ADJUSTERS



- MAKES DIFFERENT WIDTHS FAST

• DROP-ONS



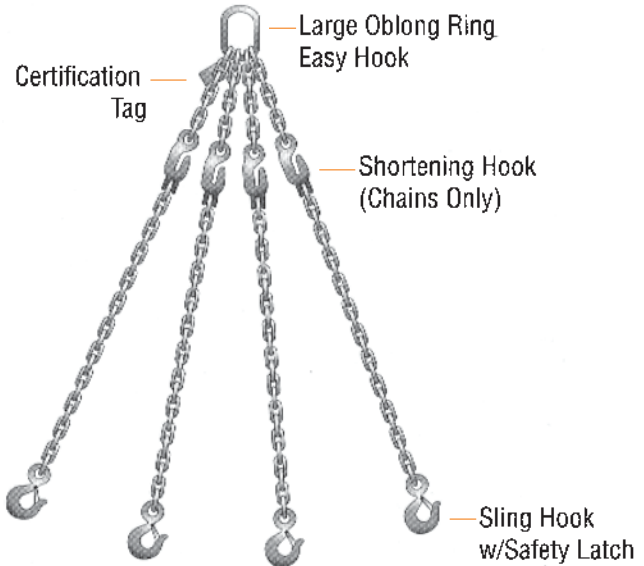
- AVAILABLE FRONT AND BACK

- STACKING LUGS
- TANDEM LUGS
- STACKING RINGS

- WELD-ON BUCKET HOOK with heavy duty safety latch



• POLYESTER SLINGS & ALLOY STEEL SLINGS



Model	Weights & Price	Ratings			Legs / Length / Material		
		Lifting Capacities at the following Lift Angles			Legs	Length	Material
	Weight	30°	45°	60°			
Polyester Sling	POUNDS	POUNDS			QTY	FEET	
QOS-EN30-5-LTCHS	20	5200	7400	9000	4	5'	Polyester
QOS-EN30-8-LTCHS	20	5200	7400	9000	4	8'	Polyester
QOS-EN60-5-LTCHS	20	10000	15000	18200	4	5'	Polyester
QOS-EN60-8-LTCHS	20	10000	15000	18200	4	8'	Polyester
Alloy Steel Sling							
*QOS-3-5	46	10600	14900	18500	4	5'	3/8" Chain
QOS-3-10-XK	79	10600	14900	18500	4	10'	3/8" Chain
QOS-4-10-XK	138	18000	25200	31200	4	10'	1/2" Chain

* QOS-3-5 DOES NOT INCLUDE SHORTENING HOOKS.

ALL INFORMATION SUBJECT TO CHANGE WITHOUT NOTICE.

OTHER LINES AVAILABLE

Titan Series: Main Line • Utility • Rap-O-Round • Long-N-Lite • Bedding

Elite Series: Tap Box • Shore Lite • Shore Lite Lite • Shore Lite Shield • Trans Pac

Shoring Series: Long Shore • Ultimate Shore • Plate Box • Euro Drive

Designed and Manufactured by

Giving Support to the People in the Trenches™

Kundel
INDUSTRIES
Est. 1987

Kundel Industries • 3710 Hendricks Rd., P.O. Box 4686, Austintown, OH 44515 • Ph. 330-259-9009 • Fax 330-259-9001