

**MADE IN THE
USA**

STUMPER 360

OPERATION & PARTS MANUAL

GOSTUMPER.COM
906.487.7002



STUMPER INDUSTRIES
51692 INDUSTRIAL DRIVE
CALUMET, MI 49913

This Manual is published by Stumper Industries for the benefit of the users of Stumper Industries, Stump Grinders. Stumper Industries has made every effort to ensure that this manual is correct and up to date at the time of publication. However, due to continuous improvements, Stumper Industries reserves the right to make changes in the content, at any time, without notice or obligation.

Each machine shipped contains an Operators Manual to familiarize the operator with the proper operating and maintenance instructions. This helps to ensure the best possible performance and service from the machine. Please read and understand all safety instructions before attempting to operate the grinder. It is extremely important that the stump grinder is checked prior to each operation and after any unexpected impact to the grinder disk.

Table of Contents

1. Safety.....	4-5
2. Installation Instructions.....	6
3. Grinding Stumps.....	7-8
4. Cutter Wheel.....	9
5. How to Sharpen Carbide Tips.....	10
6. Stumper 360 Assembly.....	11
7. 360 Parts List.....	12-13
8. Warranty.....	14

Safety

Safety Alert Symbols are used throughout this manual and on decals on your stump grinder. When you see symbols become alert to safety information and adhere to it to prevent injury or death.

DANGER – An immediate and specific hazard **WILL** result in severe personal injury or death if the proper precautions are not taken.

WARNING – A specific hazard or unsafe practice which **COULD** result in severe personal injury or death if proper precautions are not taken.

CAUTION – Reminder of good safety practices.

Be alert, know all safety information in this manual and adhere to safety practices at all times.

Make sure anyone working with, maintaining or working around the stump grinder is familiar with the operation and maintenance of the unit.

SAFETY

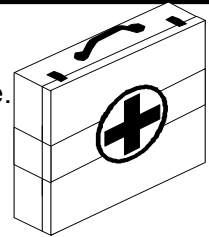


WARNING

DO NOT operate the Stumper 360 if any of the safety guards are not in place.

PREPARE FOR EMERGENCIES

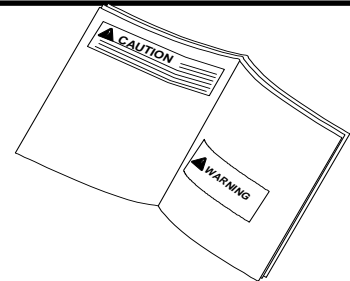
Keep a first aid kit readily available. Keep emergency phone numbers for doctors, Ambulance, hospital and fire with you at all times.



READ THIS MANUAL AND FOLLOW SAFETY INSTRUCTIONS BEFORE OPERATING THE STUMPER 360

Learn to operate the stump cutter and its controls properly. Never let anyone operate without instruction.

Read the safety messages in this manual and on your stump cutter safety signs. Keep safety signs clean and in good condition. Replace damaged safety signs.



RECOGNIZE SAFETY INFORMATION AND SIGNAL WORDS

A safety symbol is used with the signal words DANGER, WARNING and CAUTION.

DANGER denotes the most serious hazard.

WARNING is intermediate between DANGER and CAUTION.

CAUTION denotes the least serious hazard.

 **DANGER**

 **WARNING**

 **CAUTION**

DANGER: Moving grinding wheel will cause serious injury or death. Stay away



WARNING: Flying objects thrown by machine may strike people.

Wear protective clothing: Safety glasses, close fitting clothing and any other safety equipment appropriate for the job.



AVOID HIGH-PRESSURE FLUIDS

Escaping fluid under pressure can penetrate the skin and cause serious injury.

Relieve pressure before disconnecting hydraulic lines.

Tighten all connections before applying pressure.

IF AN ACCIDENT OCCURS, SEE A DOCTOR IMMEDIATELY.

Any fluids injected into the skin must be surgically removed within a few hours or gangrene may result.



STUMPER 360 INSTALLATION INSTRUCTIONS

1. Driving slowly, approach the Stumper with the skidsteer. Lift Stumper a little off the ground.



2. Secure latches on the skidsteer. Then lift Stumper so it is in the vertical position.



3. Hook up hydraulic hoses. NOTE: Be sure to run hydraulic hoses through the inside of bracket as shown.



Arrow on fitting indicates flow through the hydraulic motor.



HOW TO GRIND STUMPS

DANGER: Moving grinding wheel will cause serious injury or death. Stay away.

WARNING: Flying objects thrown by machine may strike people. Wear safety glasses and protective clothing.

Align the cutter wheel with the left side of the stump (viewed from the skidsteer control area) and position the machine so that it will cut about 4-6 inches off the top of the stump and 8-12 inches from the left side of the stump. See **Figure A**.

The spring prevents overloading of the carbide tipped cutting wheel, ensuring that grinding never stops. The rate of cut will depend on the type of tree, condition of the wood, and the condition of the cutters. Too light a feed will produce sawdust. The ideal feeding rate produces heavy wood-chips, some of which may be about 1/16" thick by approximately 6 to 8 inches long as well as chunks of wood. See **Figure B** for typical wood-chips and debris. After completing the first cut through the stump, move the skidsteer to the right (again as viewed from the control area) so the wheel can cut another 8-12 inches. Proceed with another cut. Additional passes, when the tree stump is very large, are made in the same manner as described above. Repeat the procedure until the stump is cut to ground level.

Before cutting below the ground level, make certain that all rock or stone are removed from the immediate area of the cutting wheel. When you are cutting below the ground level, the feed rate should be reduced and the operator should be alert to the possibility of cutting hidden rock. Extra care used in this part of the operation can avoid costly tooth damage. See **Figures A4** and **A5** for positioning and **Figure C** for typical below ground cut.

The wheel is so designed that it can "saw" or cut its way into solid wood by dropping straight down on it. This operation works well for cutting off large roots. See **Figure D** for a typical plunge cut to cut runner roots off.

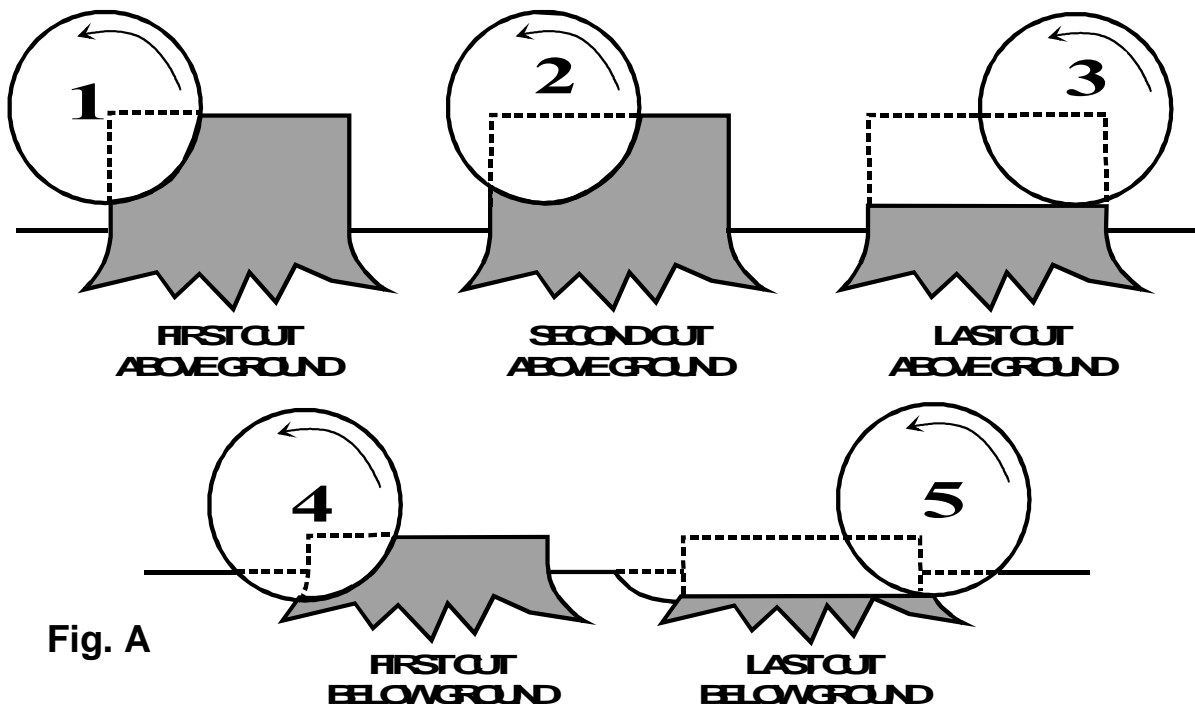


Fig. A

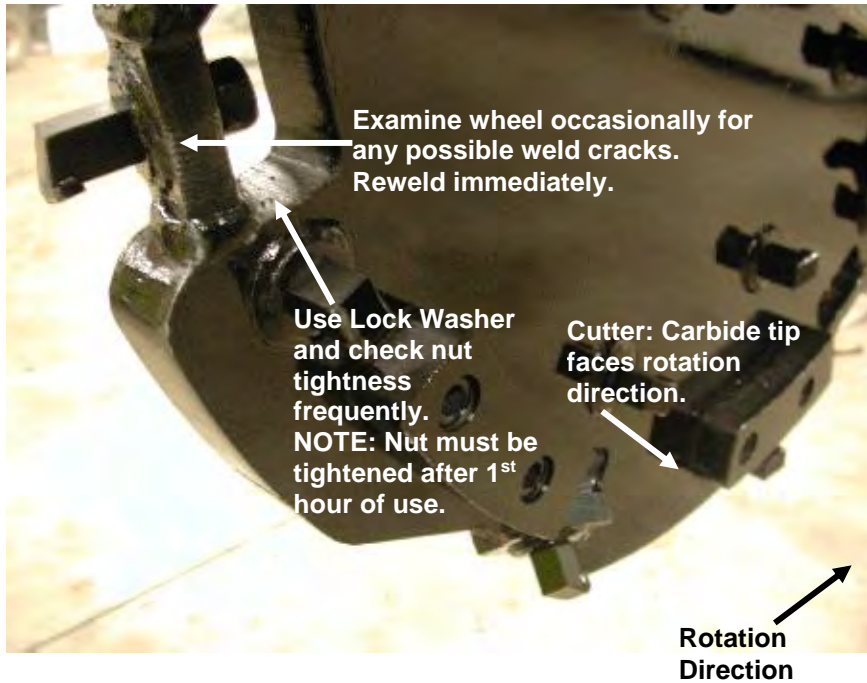


Fig. B

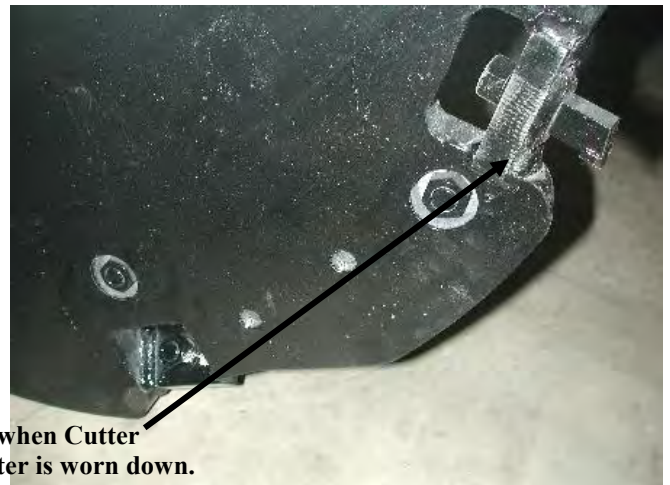
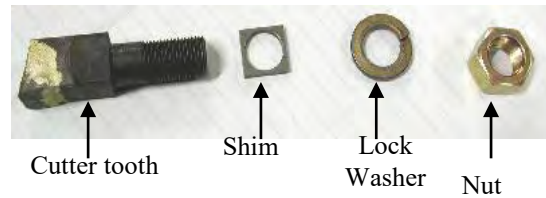


NOTE: DO NOT operate Stumper with safety guards removed.

CUTTER WHEEL



There is 1 Cutter Tooth with a shim located on the perimeter of the Cutter Wheel.
NOTE: Teeth at 45 Degree angles do not have shims.



How to Sharpen Carbide Tips.

Use Aluminum Oxide Wheel on steel shank.

STEP 2:

Grind the carbide tip until the wear land is removed. Do not dip in water to cool. Alternate teeth when grinding to avoid overheating.

Use the face of the carbide/tip for determining

10°

15°

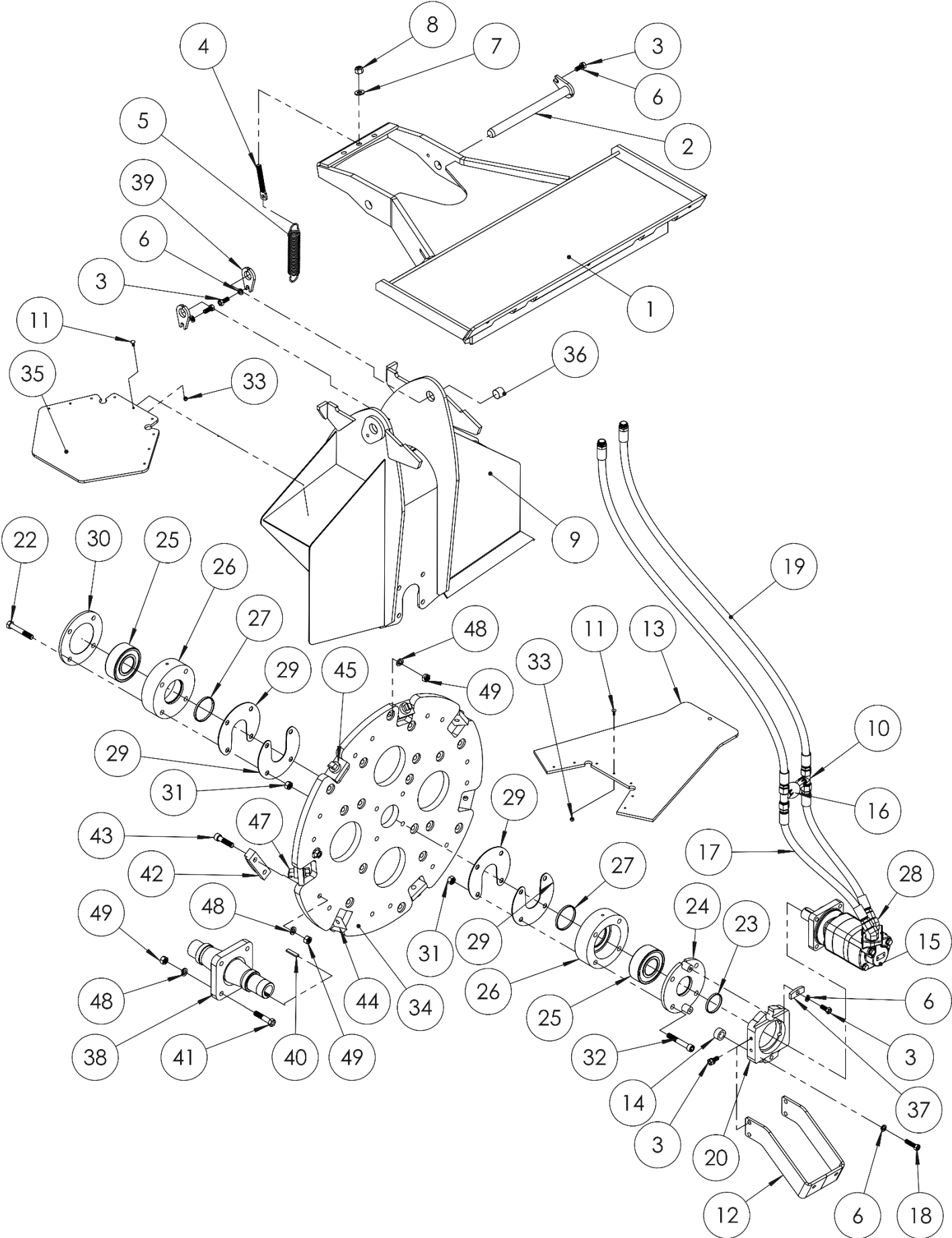
STEP 1:

Remove steel from behind carbide tip. Do not dip in water to cool. Alternate teeth when grinding to avoid overheating and resultant cracking of the shank and tip. Maintain a 15 degree angle as shown as nearly as possible. Remove enough steel so that when grinding the carbide tip you do not grind the steel backing.

Use Silicon Carbide (Green Wheel) Grinding wheel for carbide tip only.

WARNING: CONTAINS CEMENTED CARBIDE
Grinding produces hazardous dust. Wear approved respirator in a well ventilated area when sharpening.
MAY FRACTURE DURING SHARPENING
Wear Safety Glasses and protective clothing.

STUMPER 360 ASSEMBLY



STUMPER 360 PARTS LIST

ITEM	DESCRIPTION	PART NO	QTY
1	Extended Quick Attach	5046	1
2	1.25" Dia. Case Hardened Pin	1069	1
3	1/2" NC x 1.25" Long Gr. 8 Capscrew	4021	5
4	5/8" NF Spade Bolt	4060	3
5	Cutting Force Regulator	4059	3
6	1/2" Lock Washer	4019	6
7	5/8" Flat Washer	4061	3
8	5/8" NF Nylock Nut	4115	3
9	Shroud Weldment	5050	1
10	Tee	1208	2
11	1/4" NC Carriage Bolt	4113	16
12	Parking Leg	5009	1
13	Discharge Chip Deflector	1278	1
14	Torque Bushing	3101	4
15	Hydraulic Motor	4108	1
16	Check Valve	4042	1
17	Hydraulic Hose 3/4" x 18" Long	4047	2
18	1/2" NC x 2" Long Gr. 8 Capscrew	4055	4
19	Hydraulic Hose 3/4" x 108" Long	4046	2
20	Hydraulic Motor Mount	3112	1
22	5/8" NF x 4" Long Capscrew	4023	4
23	Inner Seal	4070	1
24	Bearing Cover Weldment	3122	1
25	Spherical Roller Bearing	4004	2
26	Bearing Block	1252	2
27	Inner Seal	4002	2
28	45 Degree Fitting	4117	2
29	Seal Guard	1230	4
30	Rear Bearing Cover	1000	1
31	5/8" NF Toplock Nut	4024	8
32	5/8" NF x 4" Long Capscrew	4078	4
33	1/4"-20 Nylock Nut	4114	16
34	Cutter Wheel	1269	1
35	Small Chip Deflector	3137	1
36	1.25" ID Spring Steel Bushing	1018	2
37	Motor Retainer	3099	2

STUMPER 360 PARTS LIST

ITEM	DESCRIPTION	PART NO	QTY
38	Cutter Wheel Bolt-on Shaft	1270	1
39	Bushing Retainer	1067	2
40	Shaft Key	4082	1
41	5/8" NF Gr. 8 Bolt	4116	4
42	Raker	3139	7
43	5/8" NF x 2.50" Long Capscrew	4027	14
44	Perimeter Block	1052	7
45	Square Hole Washer	1258	25
46	Cutter Tooth Shim	1234	2
47	Cutter Tooth	4095	25
48	5/8" Lockwasher	4026	29
49	5/8" NF Nut	4025	29

Stumper Industries warrants each new Stump Grinder to be free of defects in workmanship and Industries is not responsible for consequential damages. Seller's only warranty is that it will repair or replace, at its option, any defective part (s) for a period of the product to the original purchaser that purchased the product from the Seller. Any claimed defective part must be returned at the purchasers expense to the Seller at the Seller's Houghton County, Michigan facility within 1 year from the date of delivery. No warranty applies to any part (s) received by Seller later than 1 year from the date of purchase. If found to be defective by Seller, Seller will repair or replace the defective part and return the new or repaired part to the purchaser, freight prepaid. **Seller's only obligation is to repair or replace the defective part as provided above. Any alleged part failure due to product abuse or misuse, product modification of any type, or normal wear and deterioration of wear parts is not covered by this or any warranty.** If the Seller and purchaser disagree on whether or not the part was defective the dispute shall be resolved by arbitration pursuant to the rules of the American Arbitration Association and that decision shall be final and binding on all parties. Seller will not be responsible for any consequential damages arising from loss of use, loss of profits, labor costs for removal, shipping or re-installation of any parts, injury suffered by any purchaser, user or third person or damages of any nature even if due to a defect.

SELLER DISCLAIMS ALL OTHER WARRANTIES IN CONNECTION WITH THE PRODUCT, EXPRESS OR IMPLIED, AS TO ANY MATTER WHATSOEVER, INCLUDING WITHOUT LIMITATION DESCRIPTION, QUALITY, DESIGN, PERFORMANCE, SPECIFICATIONS, CONDITION, MERCHANTABILITY, AND FITNESS FOR ANY PARTICULAR PURPOSE. THE ONLY WARRANTY BEING THAT PROVIDED ABOVE TO THE ORIGINAL PURCHASER.

BUYER ACKNOWLEDGES THAT BUYER IS NOT RELYING ON SELLER'S SKILL OR JUDGEMENT TO SELECT OR FURNISH GOODS SUITABLE FOR BUYER'S USE OR PURPOSES AND BUYER AGREES THAT HE (IT) HAS INSPECTED THE PRODUCT, OBSERVED ITS OPERATION OR DECLINED THAT OPPORTUNITY AND SELECTED THE PRODUCT BASED SOLEY UPON THAT INSPECTION AND OBSERVATION RATHER THAN OF ANY STATEMENT OR REPRESENTATION OF SELLER OR SELLER'S AGENTS. "AS IS" AND "WITH ALL FAULTS," AND BUYER ACKNOWLEDGES THAT NO WARRANTIES OF MERCHANTABILITY OR FITNESS FOR ANY PARTICULAR PURPOSE ARE TO BE IMPLIED IN THIS TRANSACTION.

Buyer further acknowledges that the product might cause significant injury or damage to persons if used other than in a careful and prudent manner as a stump grinder and that any observers or bystanders within 50 feet of the cutting head are subject to injury.

The owner is responsible for all regular maintenance as explained in the operators manual. Neglect in regular maintenance or failure to replace normal wear items may void warranty.

IT IS NECESSARY TO RETURN THE WARRANTY VALIDATION FORM AND NOTIFY STUMPER INDUSTRIES IN WRITING WITHIN TEN (10) DAYS FROM DELIVERY DATE TO VALIDATE THIS WARRANTY.

WARRANTY VALIDATION FORM

Congratulations on your purchase of a Stumper Industries Stump Grinder. This product has been designed and manufactured to provide years of profitable service while minimizing maintenance and downtime. Please take the time now to complete this warranty validation form. This information is necessary for Stumper Industries to instate your warranty.

**Return Form To: Stumper Industries
51692 Industrial Drive
Calumet, MI 49913**

Purchaser Information:

Company Name: _____

Street Address: _____

City: _____ **State:** _____ **ZipCode:** _____

Telephone: _____

Contact: _____

Email: _____

Machine Information:

Model: _____ **Serial No:** _____

Customer has been instructed on operation and safety aspects of operating the grinder.

- 1. Customer has been furnished with all parts and operators manuals.**
- 2. All operation and warning decals are properly displayed on equipment.**
- 3. Customer understands it is his responsibility to train all operators on operator safety.**

Date: _____

Signed: _____

(Purchaser)