

MK Diamond Products, Inc.

www.mkdiamond.com

## MK-1610 Electric Concrete Saws EXPLODED VIEW & PARTS LIST

Model	Part
MK-1610B 10 Hp Single Phase Premium	168611
MK-1610B 10 Hp Three Phase Premium	167426
MK-1610B 10 Hp Three Phase Premium	167427



MK-1610B Premium  
Part# 167427

Revision 100	08.2017
Manual Part# 172436	

**Caution:** Read all safety and operating instructions before using this equipment. This owner's manual **MUST** accompany the equipment at all times.



## INTRODUCTION

Congratulations on your purchase of a MK Diamond Concrete Saw. We are certain that you will be pleased with your purchase. MK Diamond takes pride in producing the finest construction power tools and diamond blades in the industry.

Operated correctly, your Concrete Saw should provide you with years of service. In order to help you, we have included this manual. This owners manual contains information necessary to operate and maintain your Concrete Saw safely and correctly. Please take the time to familiarize yourself with the Concrete Saw by reading and reviewing this manual.

Read and follow all safety, operating and maintenance instructions.

If you should have questions concerning your Concrete Saw, please feel free to call our friendly customer service department at: 800.421.5830

Regards,

MK Diamond

**NOTE THIS INFORMATION FOR FUTURE USE:**

<b>MODEL NUMBER:</b>	
<b>SERIAL NUMBER:</b>	
<b>PURCHASE PLACE:</b>	
<b>PURCHASE DATE:</b>	

**NOTE:** For your (1) one year warranty to be effective, complete the warranty card (including the Serial Number) and mail it in as soon as possible.

## TABLE OF CONTENTS

<b>FIGURE 1</b> - MK-1610B PREMIUM 240V 1PH P/N 168611	4-5
<b>FIGURE 2</b> - MK-1610B PREMIUM 240V 3PH P/N 167426	6-7
<b>FIGURE 3</b> - MK-1610B PREMIUM 480V 3PH P/N 167427	8-9
<b>FIGURE 4</b> - MK-1610 PREMIUM LESS MTR, 18" BG-SS P/N 172432	10-15
<b>FIGURE 5</b> - ASSY, BLD SHAFT, 10HP P/N 172302	16
<b>FIGURE 6</b> - ASSY, POINTER, CONC SAW P/N 166465	17
<b>FIGURE 7</b> - ASSY, BLD GUARD, 18" P/N 160481	18
<b>FIGURE 8</b> - ASSY, SWITCH, 3PH P/N 168568	19
<b>FIGURE 9</b> - ASSY, BUTTON, 3PH SWITCH P/N 168575	20

FIGURE 1 MK-1610B PREMIUM 240V 1PH P/N 168611

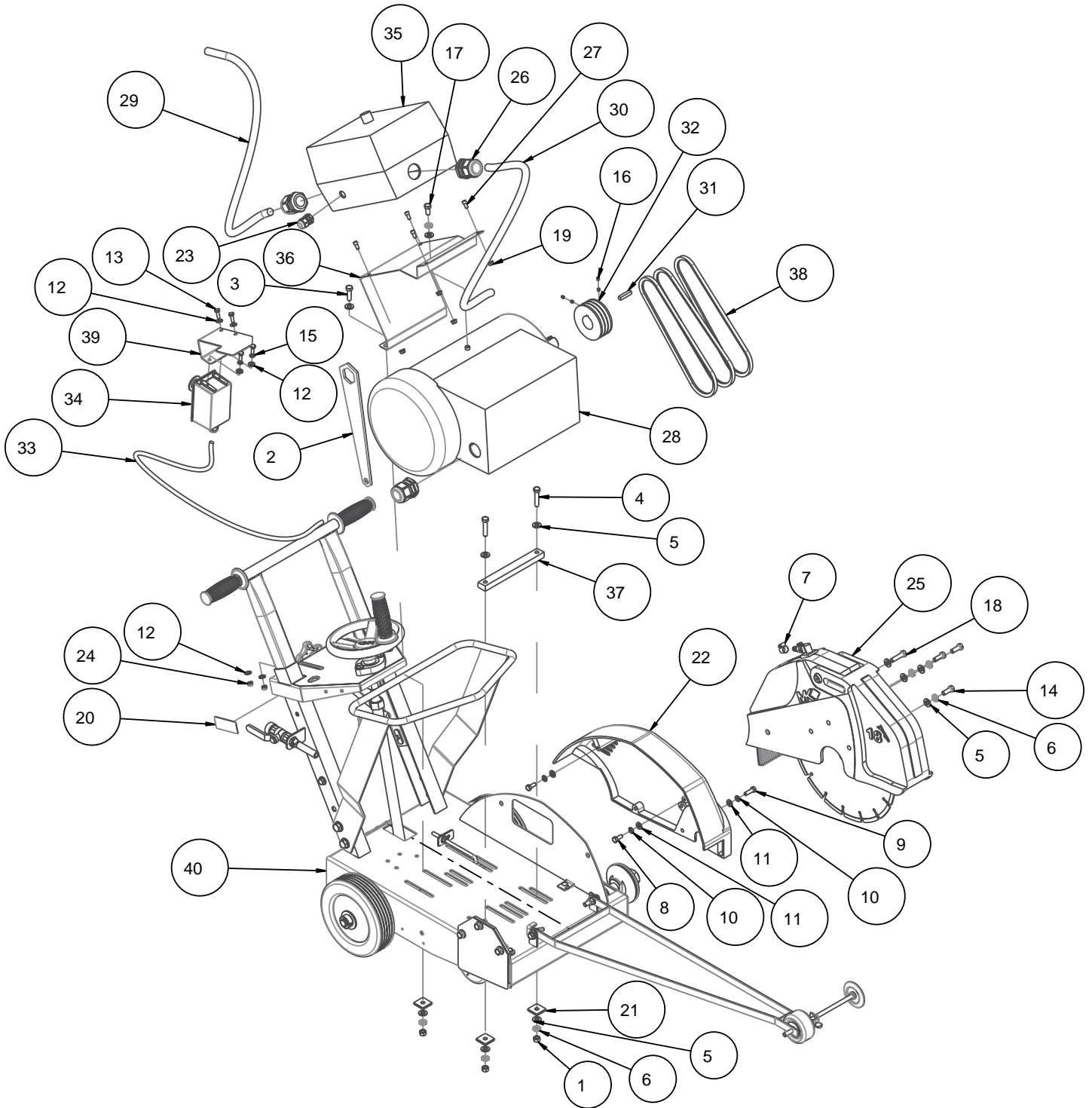


FIGURE 1 MK-1610B PREMIUM 240V 1PH P/N 168611

Item	Description	Part#	Qty
1	NUT, 3/8 - 16 HEX	101188	3
2	WRENCH, BOX END, 1-1/2 X 9/16	137976	1
3	SCREW, 3/8 - 16 X 1-1/4 HEX HEAD CAP	150774	1
4	SCREW, HEX HD, 3/8-16 X 1-3/4	150920	2
5	WASHER, 3/8 SAE FLAT	150923	11
6	WASHER, 3/8 SPLIT LOCK	150925	7
7	CLAMP, HOSE, 5/8	151198	1
8	SCREW, HEX HD, CAP, 5/16-18X3/4	151369	2
9	SCREW, HEX HD, 5/16-18X1	151743	1
10	WASHER, LOCK, SPLIT, 5/16	151747	3
11	WASHER, FLAT, SAE, 5/16	151754	3
12	WASHER, FLAT, SAE, 1/4	151915	6
13	SCREW, HEX HD, 1/4-20X3/4	152370	4
14	SCREW, HEX HD CAP, 3/8-16 X 1	152507	3
15	WASHER, LOCK, SPLIT, 1/4	152591	2
16	SCREW, SET, CPU PT, 5/16-18 X 1/4	152607	4
17	SCREW, HEX, 3/8-16 X 3/4	153527	1
18	SCREW, 3/8 - 16 X 1 -1/2 HEX HEAD	153528	1
19	NUT, HEX, TW, 1/4-20	153941	4
20	TAG, SERIAL NUMBER, BLANK	157500-RW	1
21	WASHER, SQR, 7/16 X 1-1/4 X 3/16	157567	3
22	GUARD, BELT (COMP)	157704	1
23	CONNECTOR, CORD, LTF11	159582	1
24	NUT, HEX, NYLK, 1/4-20	159857	2
25	ASSY, BLADE GUARD, 18"	160481	1
26	CONNECTOR, CORD, LTF29	160689	3
27	SCREW, 1/4-20 X 1/2 SOCKET HEAD CAP	162778	4
28	MTR, 10HP 230V 60HZ 1PH	165675	1
29	CORD, 8/3 SOO W YELLOW, 4'	166275	1
30	CORD, 8/3 SOO W YELLOW, 4'	166275	1
31	KEY, 5/16 SQR X 1-1/2	167581	1
32	PULLEY, 3VX X 3 X 3.6 X 1-3/8	167584	1
33	CORD, ELEC. SEOOO 18/3, 3'	168571	1
34	ASSY, BUTTON, 3PH SWITCH	168575	1
35	STARTER, 10 HP 240V 1 PH	168613	1
36	BRACKET, SWITCH, 10HP STARTER	168615	1
37	SPACER, MOTOR MOUNT, 10 HP	168621	1
38	BELT, V, 3VX300	170362	1
39	BRACKET, SWITCH	172428	1
40	MK-1610 PREM LESS MTR, 18" BG-WW	172432	1

FIGURE 2 MK-1610B PREMIUM 240V 3PH P/N 167426

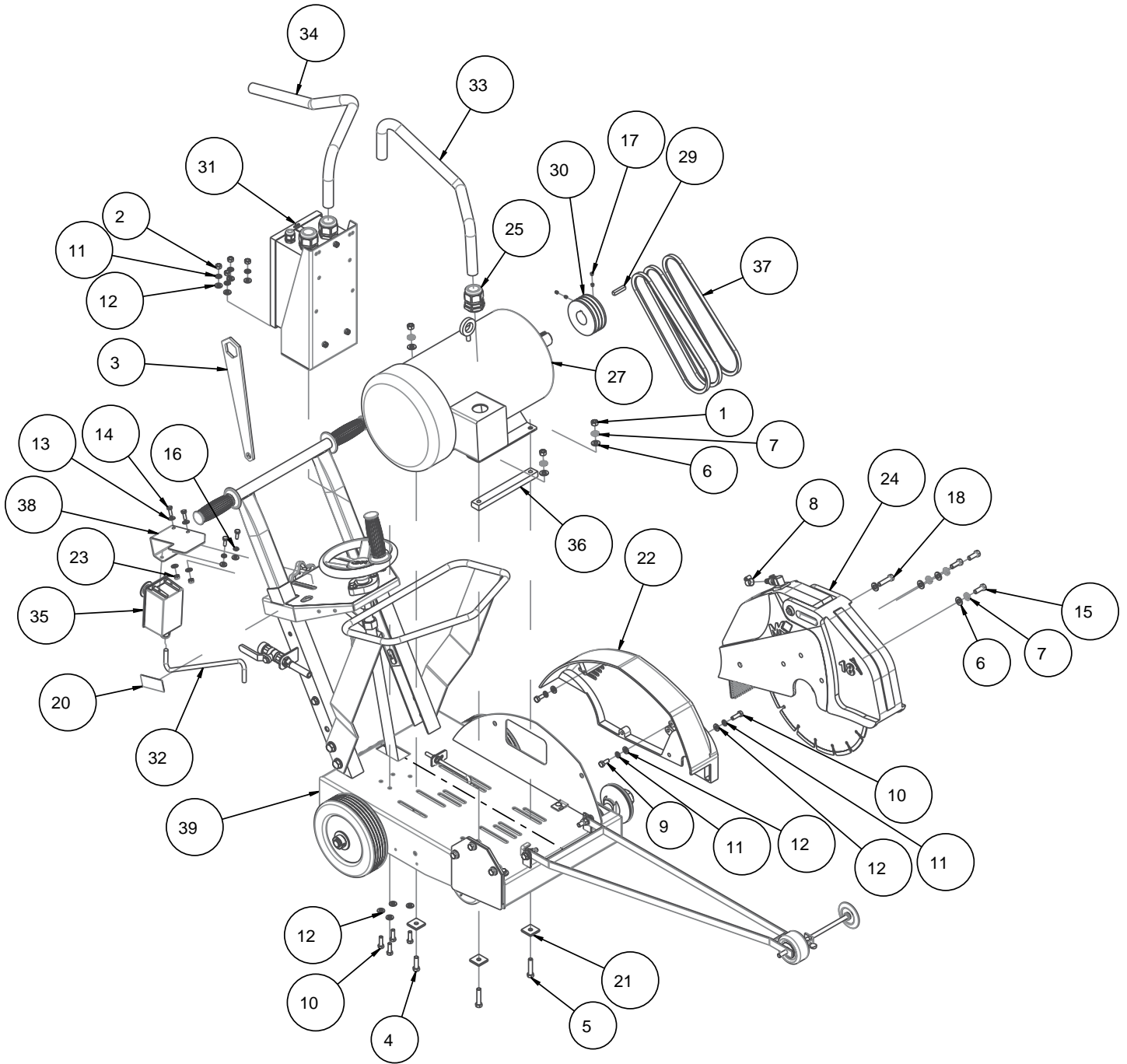


FIGURE 2 MK-1610B PREMIUM 240V 3PH P/N 167426

Item	Description	Part#	Qty
1	NUT, HEX, 3/8 - 16	101188	3
2	NUT, HEX, 5/16 - 18	101196	4
3	WRENCH, BOX END, 1-1/2 X 9/16	137976	1
4	SCREW, 3/8 - 16 X 1-1/4 HEX HEAD CAP	150774	1
5	SCREW, HEX HD, 3/8-16 X 1-3/4	150920	2
6	WASHER, 3/8 SAE FLAT	150923	7
7	WASHER, 3/8 SPLIT LOCK	150925	6
8	CLAMP, HOSE, 5/8	151198	1
9	SCREW, HEX HD, CAP, 5/16-18X3/4	151369	2
10	SCREW, HEX HD, 5/16-18X1	151743	5
11	WASHER, LOCK, SPLIT, 5/16	151747	7
12	WASHER, FLAT, SAE, 5/16	151754	11
13	WASHER, FLAT, SAE, 1/4	151915	6
14	SCREW, HEX HD, 1/4-20X3/4	152370	4
15	SCREW, HEX HD CAP, 3/8-16 X 1	152507	3
16	WASHER, LOCK, SPLIT, 1/4	152591	2
17	SCREW, SET, CPU PT, 5/16-18 X 1/4	152607	4
18	SCREW, 3/8 - 16 X 1-1/2 HEX HEAD	153528	1
19	COIL, STARTER 240V	156209	1
20	TAG, SERIAL NUMBER, BLANK	157500-RW	1
21	WASHER, SQR, 7/16 X 1-1/4 X 3/16	157567	3
22	GUARD, BELT (COMP)	157704	1
23	NUT, HEX, NYLK, 1/4-20	159857	2
24	ASSY, BLADE GUARD, 18"	160481	1
25	CONNECTOR, CORD, LTF29	160689	1
26	ELEMENT, HEATER 25.6-27A 3/SET	160722	1
27	MTR, 10HP 208-230V/460V 3PH	165676	1
28	TERMINAL, 8GA X #10 RING	166276	3
29	KEY, 5/16 SQR X 1-1/2	167581	1
30	PULLEY, 3VX X 3 X 3.6 X 1-3/8	167584	1
31	ASSEMBLY, SWITCH, 3 PHASE	168568	1
32	CORD, 18/3 SEOOW 3FT	168571	1
33	CORD, 8/4 SEOOW 3.5 FT	168572	1
34	CORD, 8/4 SEOOW 4FT	168572	1
35	ASSY, BUTTON, 3PH SWITCH	168575	1
36	SPACER, MOTOR MOUNT, 10 HP	168621	1
37	BELT, V, 3VX300	170362	3
38	BRACKET, SWITCH	172428	1
39	MK-1610 PREM LESS MTR, 18" BG-SS	172432	1

FIGURE 3 MK-1610B PREMIUM 480V 3PH P/N 167427

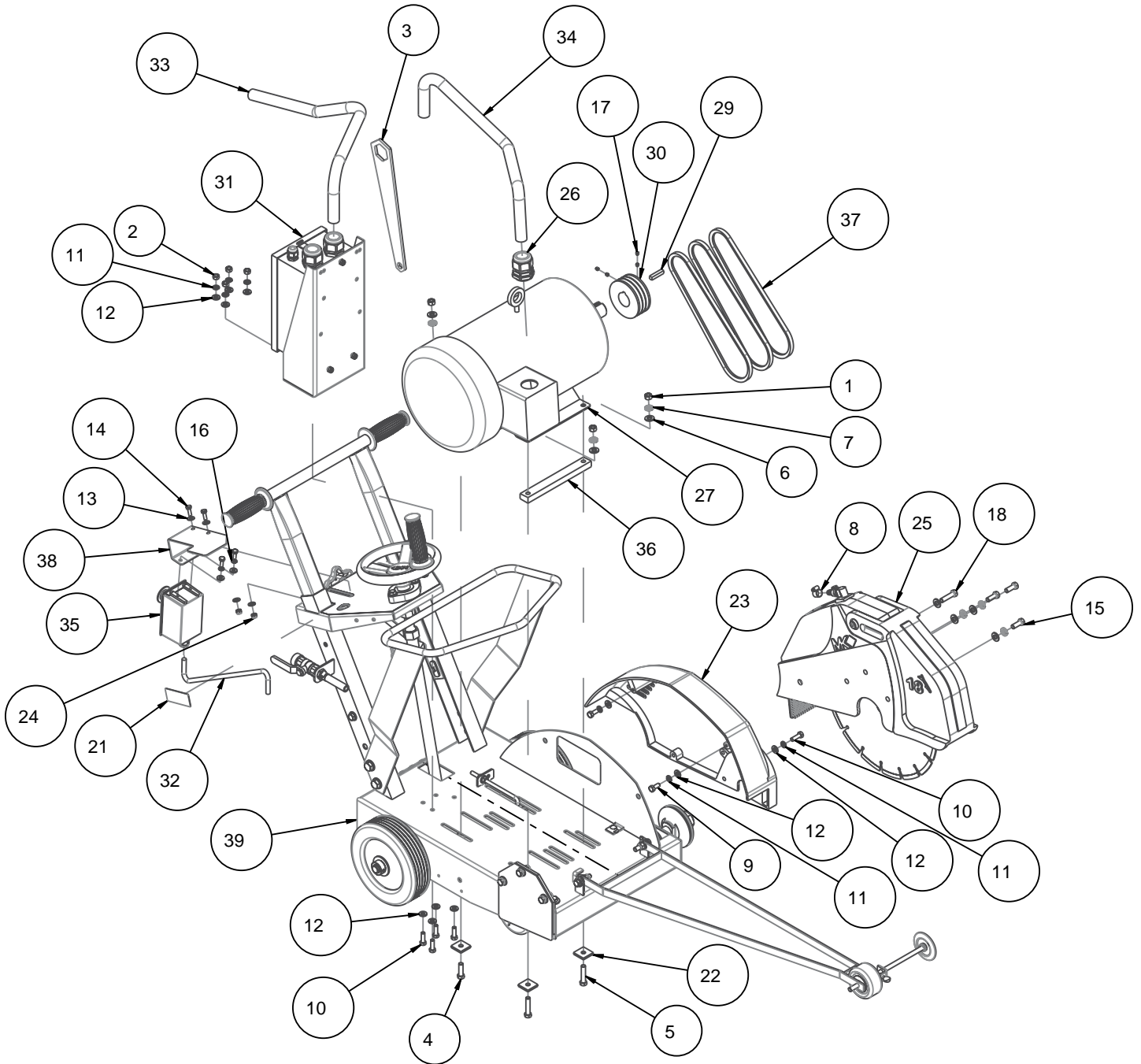
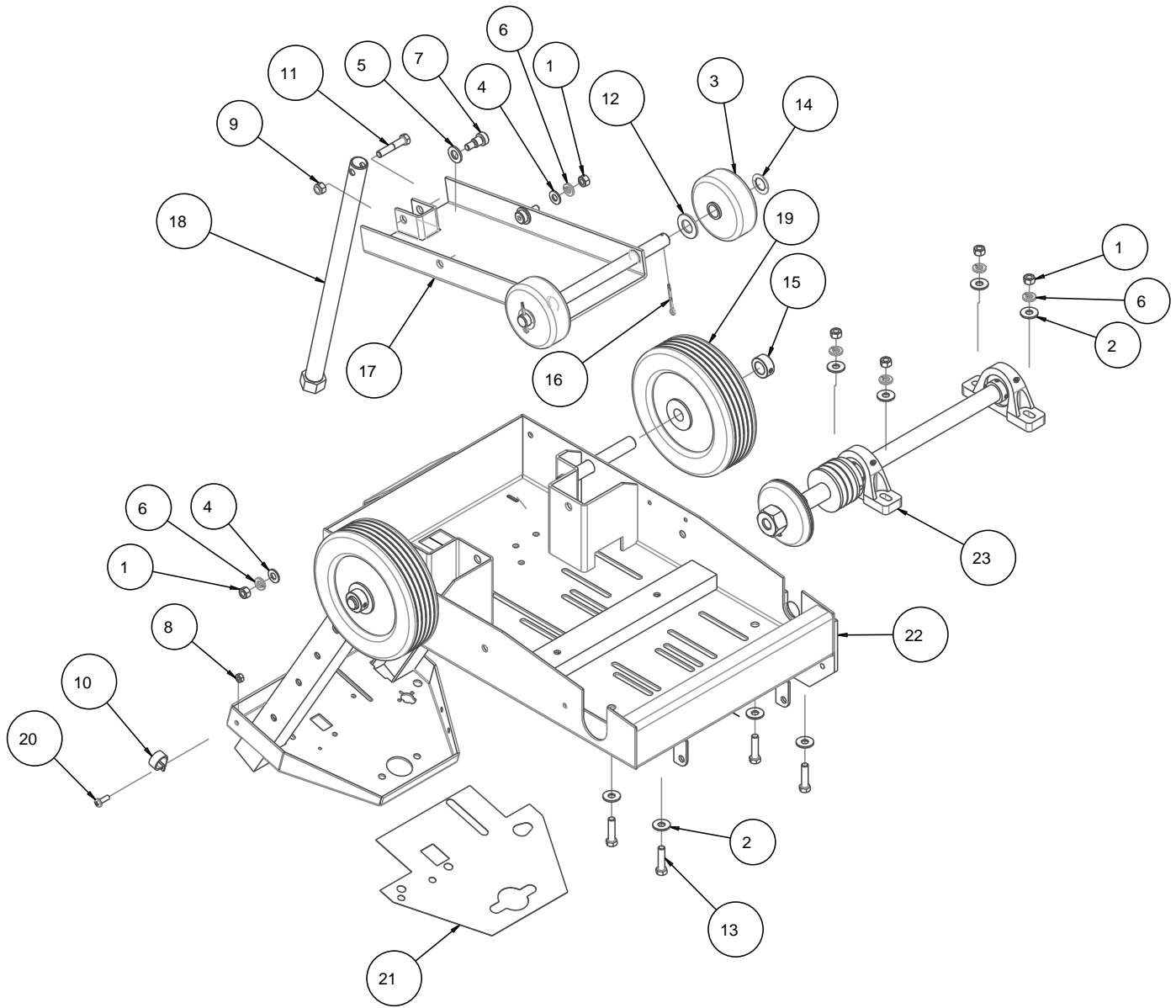




FIGURE 3 MK-1610B PREMIUM 480V 3PH P/N 167427

Item	Description	Part#	Qty
1	NUT, HEX, 3/8 - 16	101188	3
2	NUT, HEX, 5/16 - 18	101196	4
3	WRENCH, BOX END, 1-1/2 X 9/16	137976	1
4	SCREW, 3.8 - 16 X 1-1/4 HEX HEAD CAP	150774	1
5	SCREW, HEX HD, 3/8-16 X 1-3/4	150920	2
6	WASHER, 3/8 SAE FLAT	150923	7
7	WASHER, 3/8 SPLIT LOCK	150925	6
8	CLAMP, HOSE, 5/8	151198	1
9	SCREW, HEX HD, CAP, 5/16-18X3/4	151369	2
10	SCREW, HEX HD, 5/16-18X1	151743	5
11	WASHER, LOCK, SPLIT, 5/16	151747	7
12	WASHER, FLAT, SAE, 5/16	151754	11
13	WASHER, FLAT, SAE, 1/4	151915	6
14	SCREW, HEX HD, 1/4-20X3/4	152370	4
15	SCREW, HEX HD CAP, 3/8-16 X 1	152507	3
16	WASHER, LOCK, SPLIT, 1/4	152591	2
17	SCREW, SET, CUP PT, 5/16-18 X 1/4	152607	4
18	SCREW, 3/8 - 16 X 1 -1/2 HEX HEAD	153528	1
19	ELEMENT, HEATER 13-15, 1A	156207	1
20	COIL, STARTER 480V	156210	1
21	TAG, SERIAL NUMBER, BLANK	157500-RW	1
22	WASHER, SQR, 7/16 X 1-1/4 X 3/16	157567	3
23	GUARD, BELT (COMP)	157704	1
24	NUT, HEX, NYLK, 1/4-20	159857	2
25	ASSY, BLADE GUARD, 18"	160481	1
26	CONNECTOR, CORD, LTF29	160689	1
27	MTR, 10HP 208-230V/460V 3PH	165676	1
28	TERMINAL, 8GA X #10 RING	166276	3
29	KEY, 5/16 SQR X 1-1/2	167581	1
30	PULLEY, 3VX X 3 X 3.6 X 1-3/8	167584	1
31	ASSEMBLY, SWITCH, 3 PHASE	168568	1
32	CORD, 18/3 SEOOW 3FT	168571	1
33	CORD, 8/4 SEOOW 4 FT	168572	1
34	CORD, 8/4 SEOOW 3.5FT	168572	1
35	ASSY, BUTTON, 3PH SWITCH	168575	1
36	SPACER, MOTOR MOUNT, 10 HP	168621	1
37	BELT, V, 3VX300	170362	3
38	BRACKET, SWITCH	172428	1
39	MK-1610 PREM LESS MTR, 18" BG-SS	172432	1

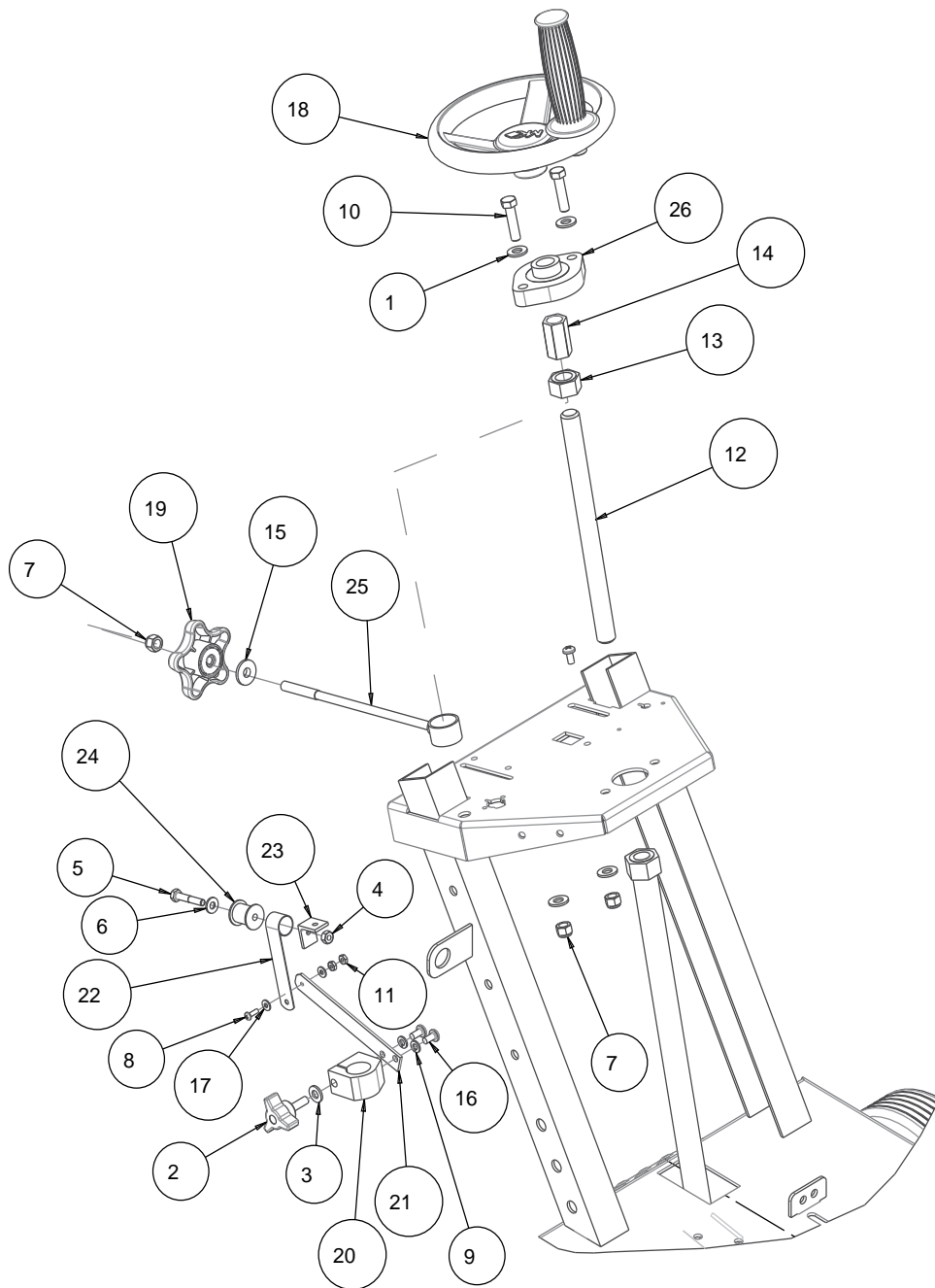
FIGURE 4 MK-1610 PREMIUM LESS MTR, 18" BG-SS P/N 172432



## FIGURE 4 MK-1610 PREMIUM LESS MTR, 18" BG-SS P/N 172432

Item	Description	Part#	Qty
1	NUT, 3/8 -16 HEX	101188	6
2	WASHER, FLAT, USS, 3/8	101360	8
3	WHEEL, FRONT, Ø 4 X 1 - 1/2W	150830	2
4	WASHER, 3/8 SAE FLAT	150923	2
5	WASHER, 1/2 SAE FLAT	150924	2
6	WASHER, 3/8 SPLIT LOCK	150925	6
7	SCREW, SHOULDER, 1/2 X 1/2	151753	2
8	NUT, HEX, 14-20	151893	1
9	NUT, 3/8 - 16 NYLOK HEX	152505	1
10	CLAMP, 3/4 CUSHION LOOP	152594	1
11	SCREW, HEX HD CAP 3/8 - 16 X 2	153485	1
12	WASHER, FLAT, SAE, 3/4	153523	2
13	SCREW, 3/8-16 X 1-1/2 HEX HEAD	153528	4
14	SHIM, .045 THK .750 ID 1.250 OD	153699	2
15	COLLAR, SET, 3/4"	153814	2
16	PIN, COTTER 1/8 X 1-1/2	153861	2
17	WELDMENT, TRUCK	155048	1
18	LINKAGE, DEPTH FEED 1600/9000	155049	1
19	WHEEL, REAR 8"	155986	2
20	SCREW, PAN HD, 1/4-20 X 3/4	157523	1
21	LABEL, FRAME CONSOLE	157850	1
22	MAIN FRAME	168369	1
23	ASSY, BLD SHAFT, 10HP	172302	1

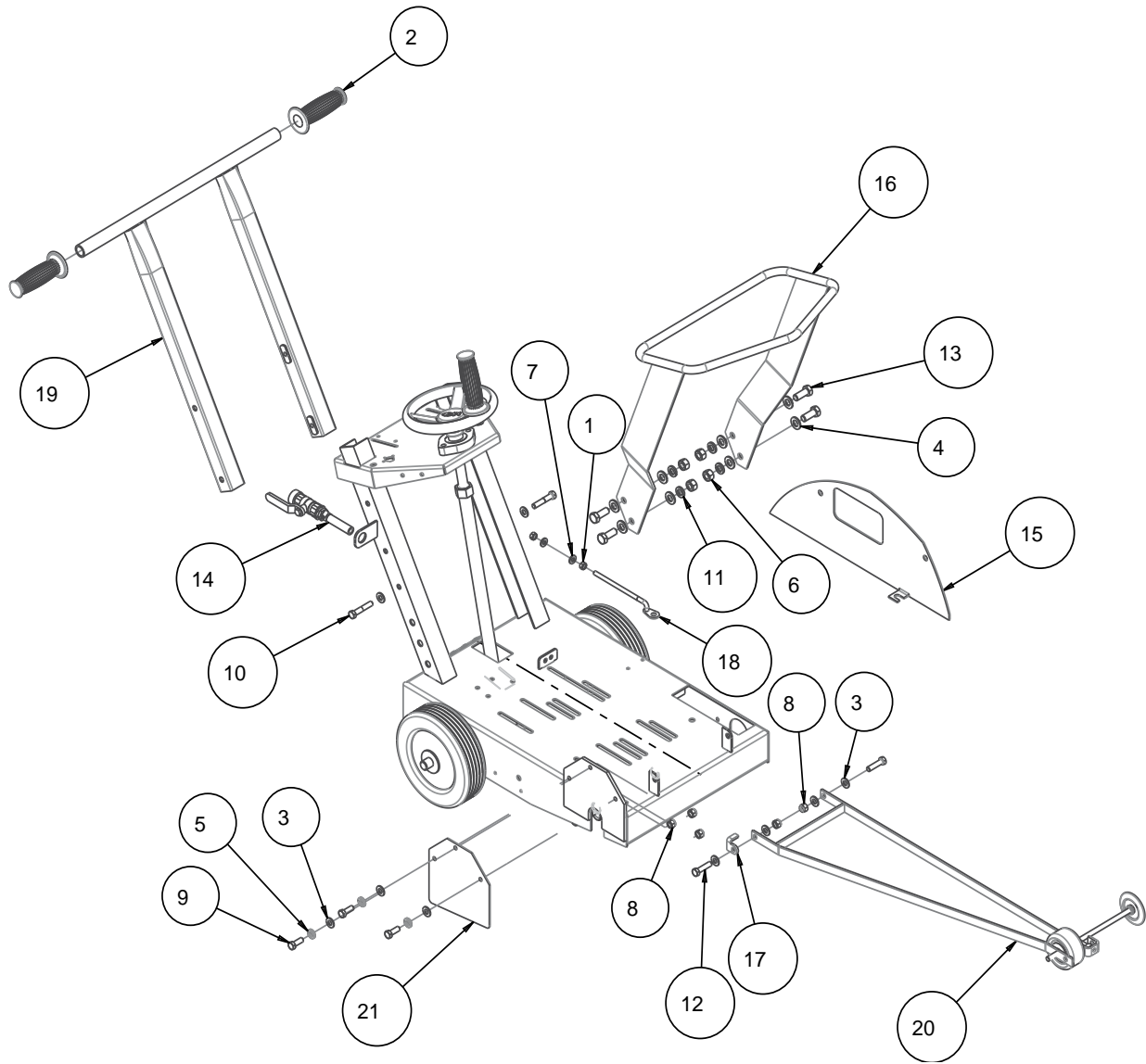
FIGURE 4 MK-1610 PREMIUM LESS MTR, 18" BG-SS P/N 172432



**FIGURE 4 MK-1610 PREMIUM LESS MTR, 18" BG-SS P/N 172432**

Item	Description	Part#	Qty
1	WASHER, 3/8 SAE FLAT	150923	4
2	KNOB, DAVIES, 5/16 - 18 X 1	151681	1
3	WASHER, FLAT, SAE, 5/16	151754	1
4	NUT, HEX, 1/4 - 20	151893	1
5	SCREW, HEX HEAD 1/4 - 20 X 1 - 1/2"	151914	1
6	WASHER, 1/4 SAE FLAT	151915	1
7	NUT, 3/8 - 16 NYLOK HEX	152505	6
8	SCREW, RND HD, #8 - 32 X 1/2	152517	1
9	WASHER, 1/4 SPLIT LOCK	152591	2
10	SCREW, 3/8-16 X 1-1/2 HEX HEAD	153528	2
11	NUT, HEX, 8-32	153549	2
12	STUD, 3/4 - 10 X 10"	155062	1
13	NUT, 3/4 - 10 HEX	155063	1
14	SPACER, DEPTH CONTROL	155161	1
15	WASHER, THRUST	155238	1
16	SCREW, PAN HD, CAP 1/4 - 20 X 1/2	155452	3
17	WASHER, FLAT, SAE, #8	155454	2
18	ASSY, CRANK WHEEL, 3/4 - 10	155457	1
19	KNOB, ADJ, 5 PRONG COMP	155845	1
20	CLAMP, DEPTH INDICATOR	156603	1
21	ARM, DEPTH INDICATOR	156604	1
22	SPRING, DEPTH GAUGE	156605	1
23	BRACKET, DEPTH INDICATOR	156608	1
24	SPOOL, DEPTH INDICATOR 1"	157845	1
25	LOCK, DEPTH CONTROL, 8-7/8	157846	1
26	BEARING, FLANGE, 3/4ID, FD204	165971	1

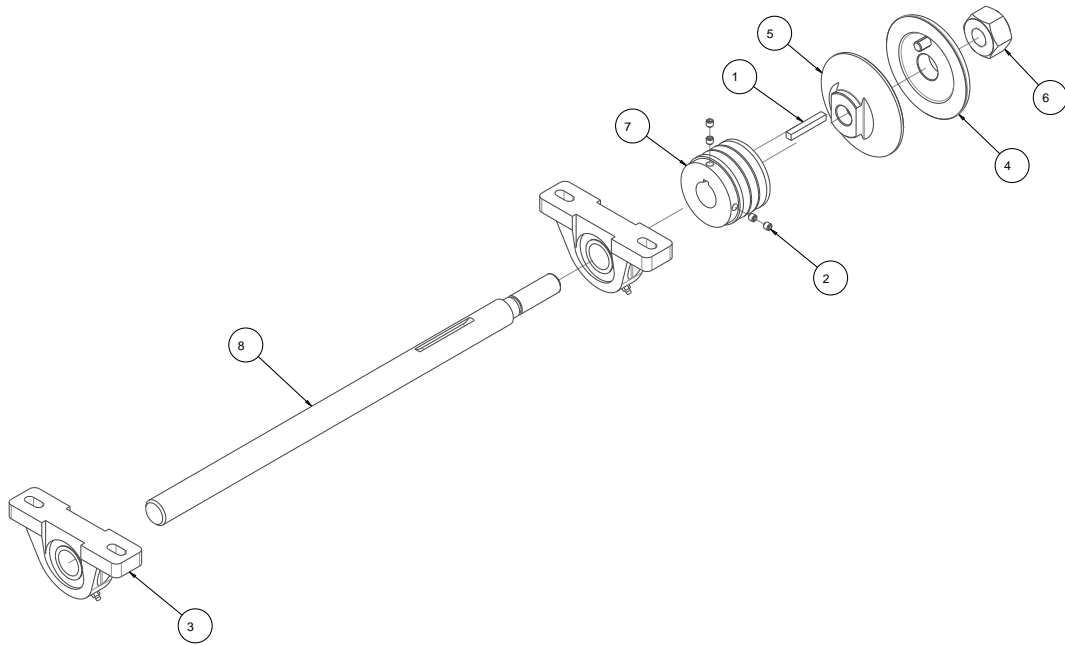
FIGURE 4 MK-1610 PREMIUM LESS MTR, 18" BG-SS P/N 172432



**FIGURE 4 MK-1610 PREMIUM LESS MTR, 18" BG-SS P/N 172432**

Item	Description	Part#	Qty
1	NUT, HEX, 5/16-18	101196	2
2	GRIP, HANDLE, 1.0 ID	150842	2
3	WASHER, 3/8 SAE FLAT	150923	9
4	WASHER, 1/2 SAE FLAT	150924	8
5	WASH, LOCK, SPLIT, 3/8	150925	3
6	NUT, HEX, 1/2-13	151282	4
7	WASHER, SAE FLAT 5/16	151754	2
8	NUT, 3/8 - 16 NYLOK HEX	152505	5
9	SCREW, HEX HD CAP, 3/8-16X1	152507	3
10	SCREW, HEX HD, CAP, 3/8-16X2	153485	2
11	WASHER, 1/2 SPLIT LOCK	153524	4
12	SCREW, 3/8-16 X 1-1/2 HEX HEAD	153528	2
13	SCREW, 1/2-13 X 1-1/4 HEX HEAD CAP	153532	4
14	ASSY, WATER VALVE	155458	1
15	PLATE, BELT GUARD BACK	157705	1
16	LIFTING BAIL	157745	1
17	CLIP, STOP	157837	1
18	ARM, TENSION	157848	1
19	HANBLEBAR, 9000/1600	159903	1
20	ASSY, POINTER, CONC SAW	166465	1
21	COVER, BLADESHAFT	172421	1

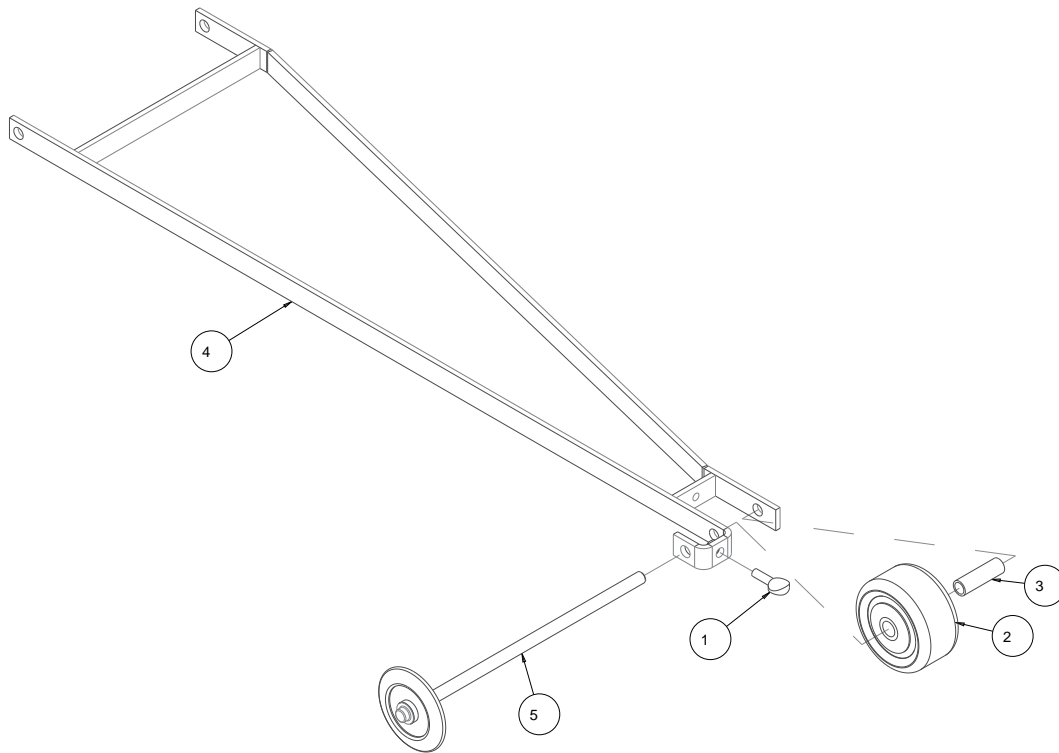
FIGURE 5 ASSY, BLD SHAFT, 10HP P/N 172302



Item	Description	Part#	Qty
1	KEY, 1/4 SQR X 1-3/4	150796	1
2	SCREW, SET, CUP PT, 5/16-18 X 1/4	152607	4
3	BEARING, PILLOW BLK 1:	155072	2
4	ASSY, OUTER FLANGE, 4"	155451	1
5	FLANGE, 4.0 X 3/4-16RH INNER	157843	1
6	NUT, BLDSHFT, 3/4-16	157844	1
7	PULLEY, 3VX X 3 X 2.65 X 1	160614	1
8	SHAFT, BLADE, -SS	172301	1

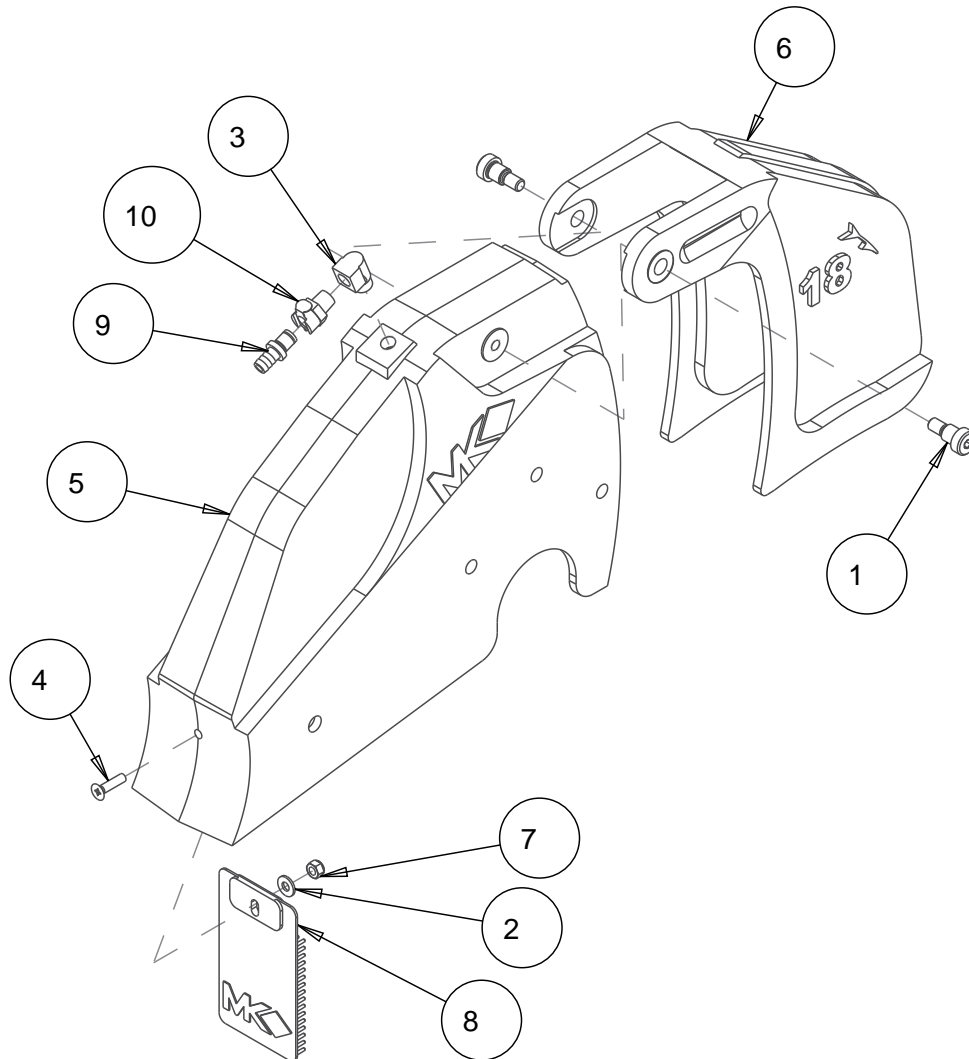


FIGURE 6 ASSY, POINTER, CONC SAW P/N 166465



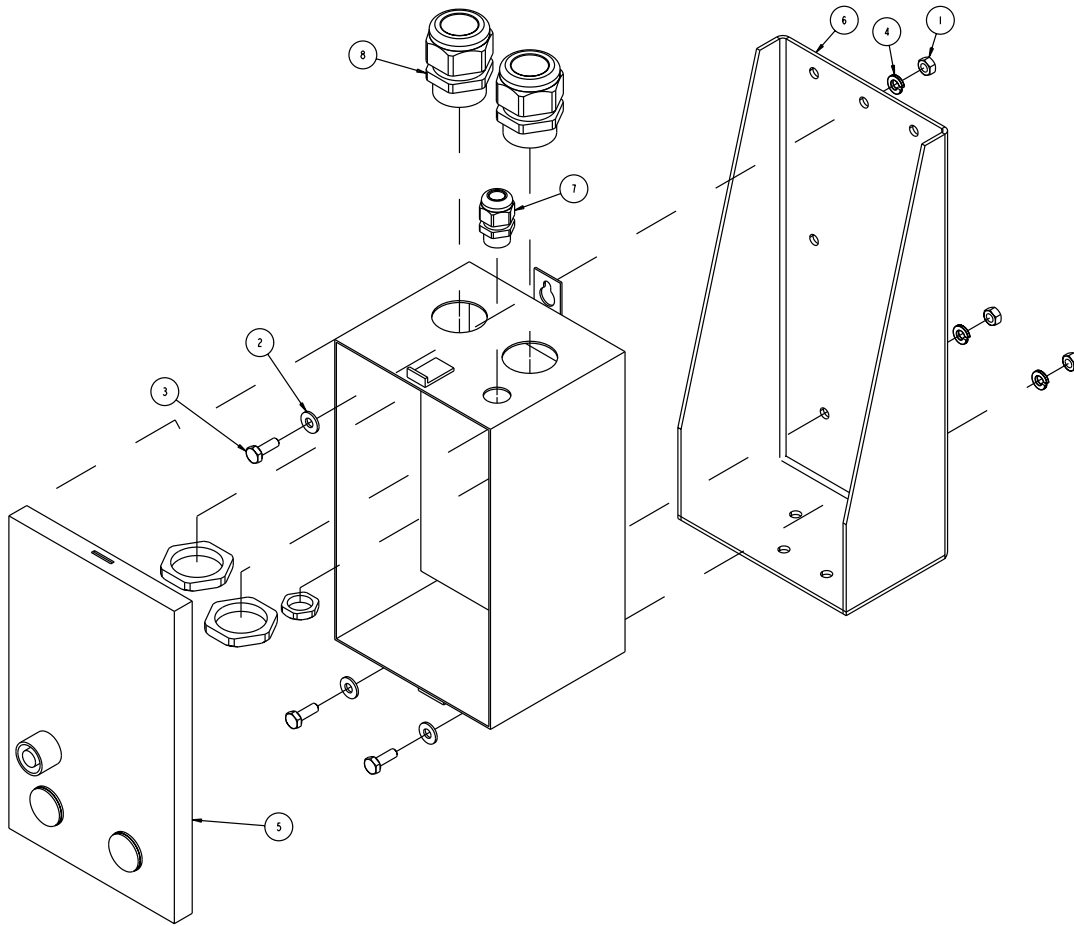
Item	Description	Part#	Qty
1	SCREW, THUMB 1/4-20 X 3/4	150991	1
2	WHEEL, POINTER, 3"	155066	1
3	BUSHING, 3/8ID X 1-5/8L	155153	1
4	POINTER ARM, MK-1600	156544	1
5	ASSY, POINTER WHEEL	165238	1

FIGURE 7 ASSY, BLD GUARD, 18" P/N 160481



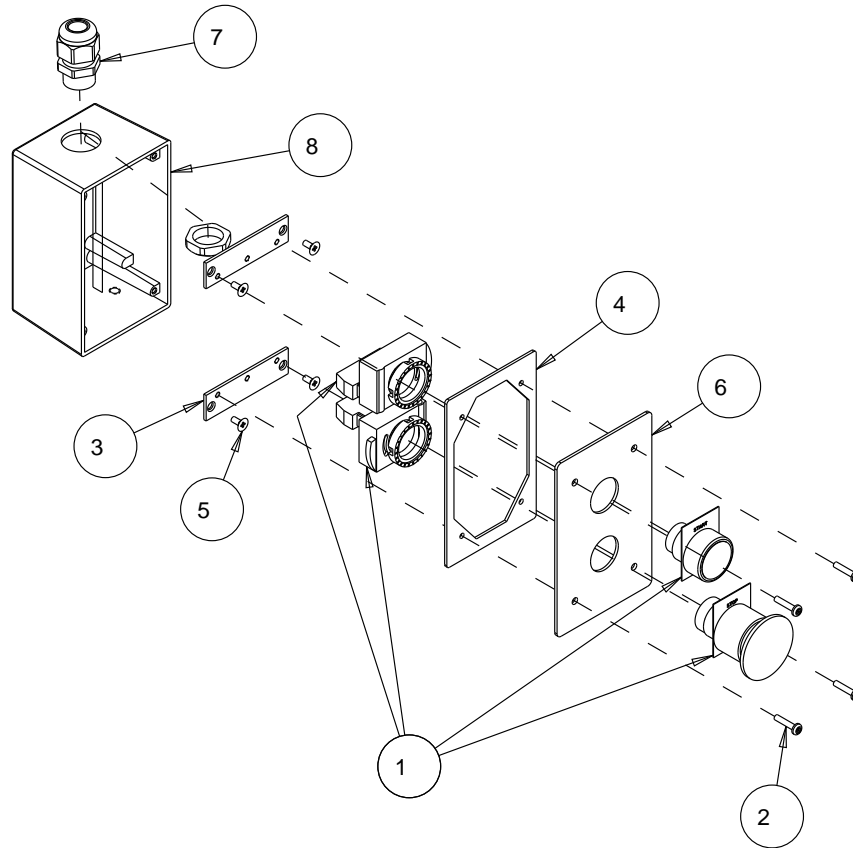
Item	Description	Part#	Qty
1	SCREW, SHOULDER, 1/2 X 1/2	151753	2
2	WASHER, FLAT, SAE, 1/4	151915	1
3	ELBOW, 1/4 MNPT STREET	154615	1
4	SCREW, FLAT HD, 1/4-20 X 1	157527	1
5	CASTING, BLD GRD, 18" REAR-COMP	159544	1
6	CASTING, BLD GRD, 18" FRONT-COMP	159645	1
7	NUT, HEX, NYLK, 1/4-20	159857	1
8	GUARD, SPLASH	160310	1
9	COUPLING, QD PLUG, 3/8 BARB	160464	1
10	COUPLING, QD SOCKET, 1/4MNPT	160465	1

FIGURE 8 ASSY, SWITCH, 3PH P/N 168568



Item	Description	Part#	Qty
1	NUT, HEX, 1/4-20	151893	3
2	WASHER, 1/4SAE FLAT	151915	3
3	SCREW, HEX HD, 1/4-20X3/4	152370	3
4	WASHER, 1/4 SPLIT LOCK	152591	3
5	STARTER, NEMA 1, MK5000	156199	1
6	BRACKET, SWITCH MTG	156492	1
7	CONNECTOR, CORD, LIQUID TIGHT	159582	1
8	CONNECTOR, CORD, PG29	160689	2

**FIGURE 9 ASSY, BUTTON, 3PH SWITCH P/N 168575**



Item	Description	Part#	Qty
1	ASSY, PUSH BUTTON MK-5000 3PH	156528	1
2	SCREW, PAN HD PHIL 6-32 X 5/8	157393	4
3	PLATE, MOUNTING, SWITCH	159489	2
4	GASKET, COVER, 30 AMP SWITCH	159491	1
5	SCREW, FLAT HD PHIL 6-32 X 5/16	159493	4
6	COVER, SWITCH, START/STOP	168576	1
7	CORD CONNECTOR LTF16 (HEYCO LTF 16)	170541	1
8	BOX, ELEC, TOP, 57/64	170551	1







**MK-1610 Electric Concrete Saws**  
EXPLODED VIEW & PARTS LIST



**MK Diamond Products, Inc.**

MK Diamond Products, Inc.  
1315 Storm Parkway  
Torrance, CA 90501

Toll-Free: (800) 421-5830  
Phone: (310) 539-5221  
Fax: (310) 539-5158  
[www.mkdiamond.com](http://www.mkdiamond.com)