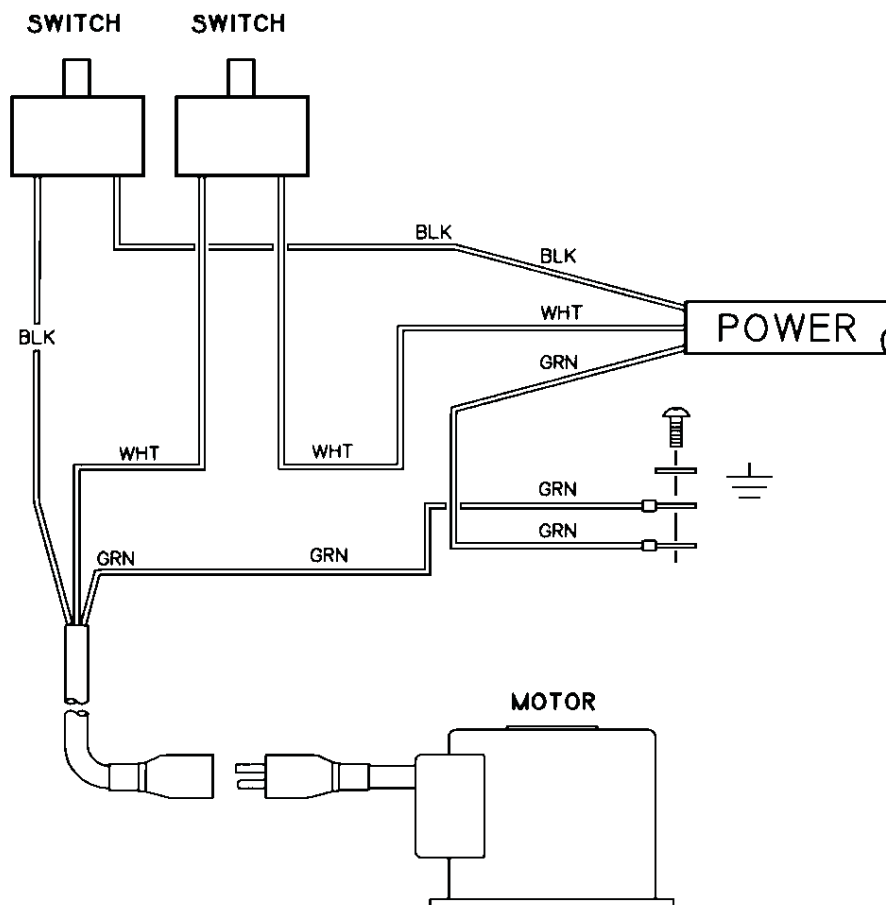


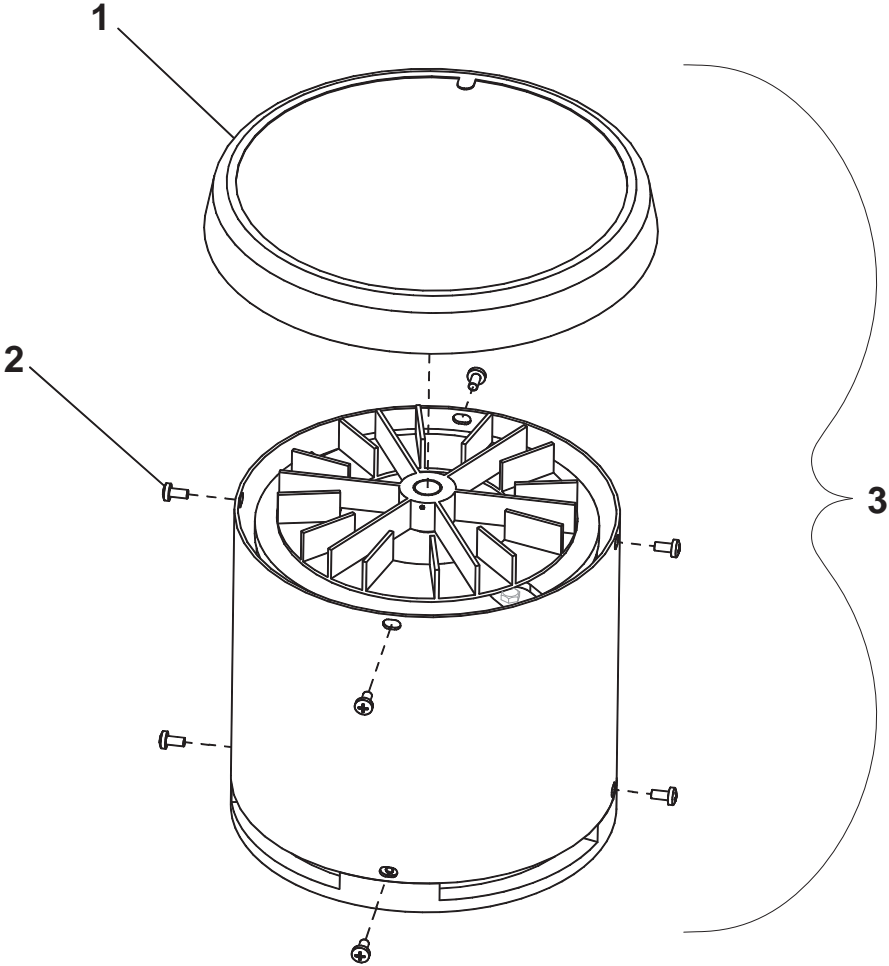
115V Diagram Single Speed



SERVICE SCHEDULE

MAINTENANCE	DAILY	MONTHLY
Check pad wear to prevent buildup of chemicals	*	
Check pad driver system for damage	*	
Check handles, switches, and knobs for damage	*	
Store with pad off the floor	*	
Check all bearings for noise		*
Check skirt/bumpers for damage and replace as necessary		*
Check overall performance of machine		*

MOTOR GROUP



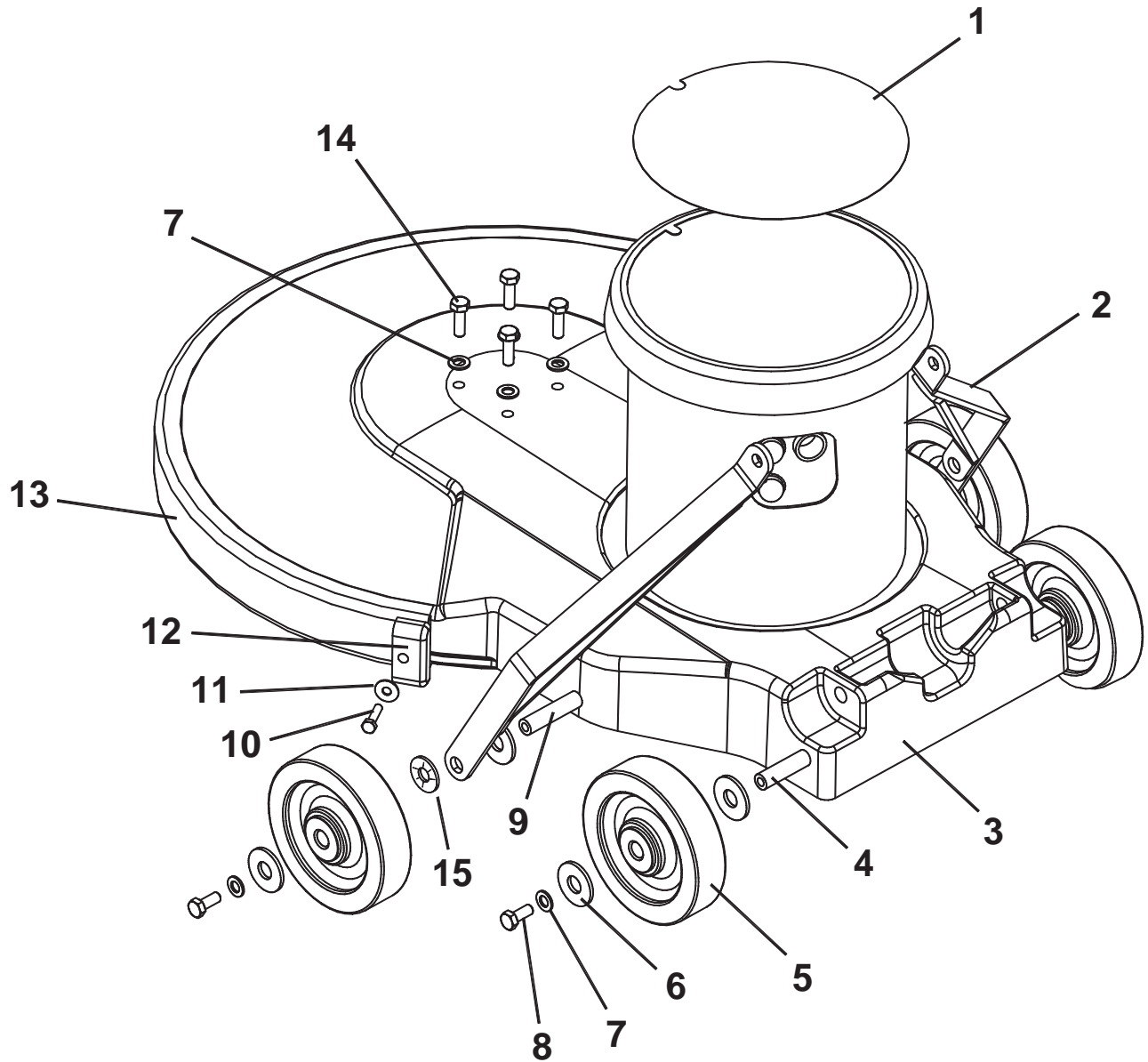
MOTOR GROUP

REF	PART NO.	PRV NO.	QTY	DESCRIPTION	SERIAL NO. FROM	NOTES:
1	86217500	27892	1	COVER ASM, MOTOR		
2	86223680	70700	8	SCR, M5 X .8 X 10 PHMS BLK		
3	86222060	53249	1	MOTOR, 115V 1.75 HP		INCLUDES ITEM 1 & 2

MOTOR COMPONENTS (NOT SHOWN)

PART NO.	PRV NO.	QTY	DESCRIPTION	SERIAL NO. FROM	NOTES:
86216720	140694	1	CIRCUIT BREAKER, 25 AMP MP/MB		
86223390	67488	1	RECTIFIER, 50A 600V BRIDGE		
86001820	14404	1	BRUSH SET MOTOR (PKG OF 4)		
86003660	34378	1	FUSE		
86003670	34379	1	FUSE HOLDER		
86001020	09135	2	BEARING, MOTOR		

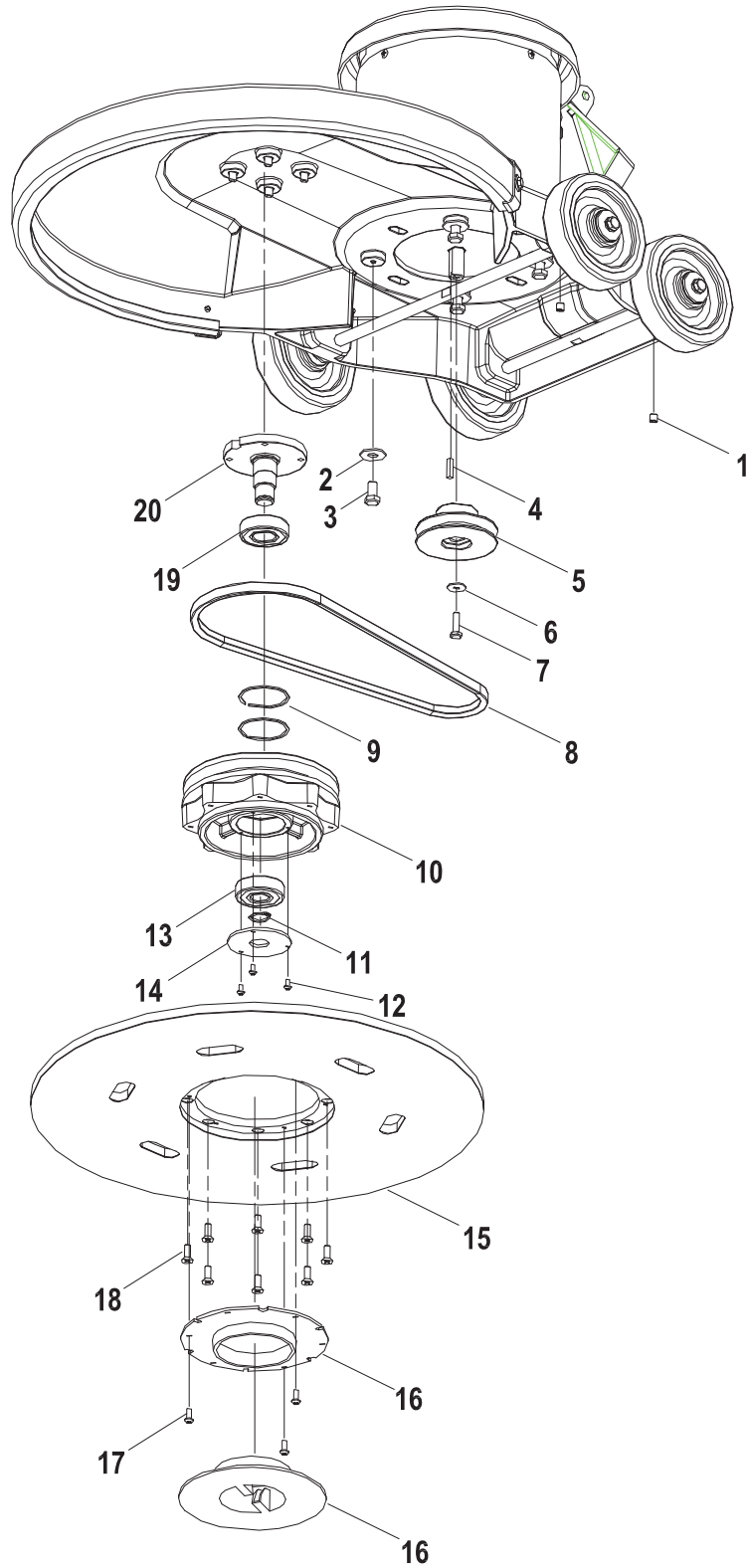
FRAME GROUP



FRAME GROUP

REF	PART NO.	PRV NO.	QTY	DESCRIPTION	SERIAL NO. FROM	NOTES:
1	86220050	500766	1	LABEL, LIGHTNING 1500 MAIN		
2	86215460	140397	2	BRACKET, HANDLE LINK		
3	86217630	29229BLU	1	DECK, 20 IN BURNISHER, BLUE		
4	86214930	03111	1	AXLE, MAIN POLISHER		
5	86226020	89206	4	WHEEL, 5D X 1.25 X 13MM ID GRY		
6	86225720	87203	8	WASHER, 14MM ID X 36MM OD		
7	86137280	87054	8	WASHER, M8 FLAT DIN125A PLTD		
8	86136640	70262	4	SCR, M8 X 20 HHMS PLTD		
9	86214950	03116	1	AXLE, MAIN BURNISHER		
10	86276570	70691	2	SCR, M6 X 25 HHMS BLK		
11	86137340	87211	2	WASHER, M6 FLAT BLK		
12	86216600	27871	2	CAP, EXTRUSION		
13	86216360	14423	1	BUMPER, EXTRUSION 44.30 IN		
14	86288730	70184	4	SCR, M8 X 25HHCS		
15	86222270	57276	2	NUT, PUSH FLAT RD .51 ID		

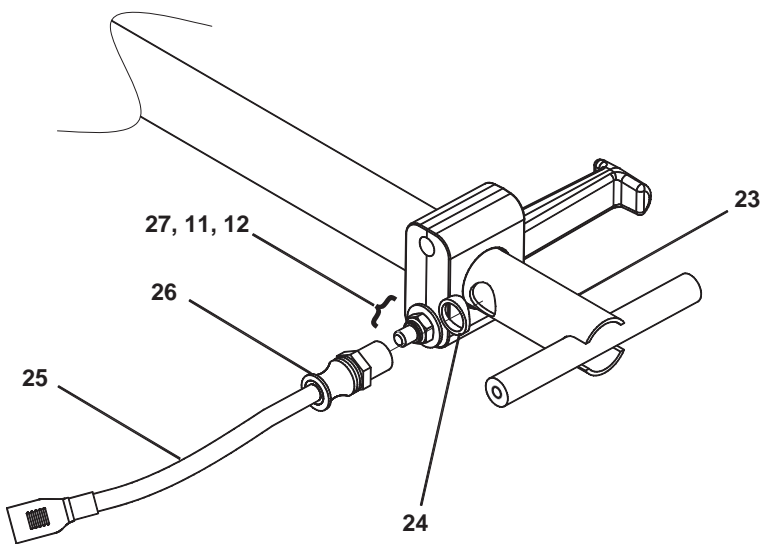
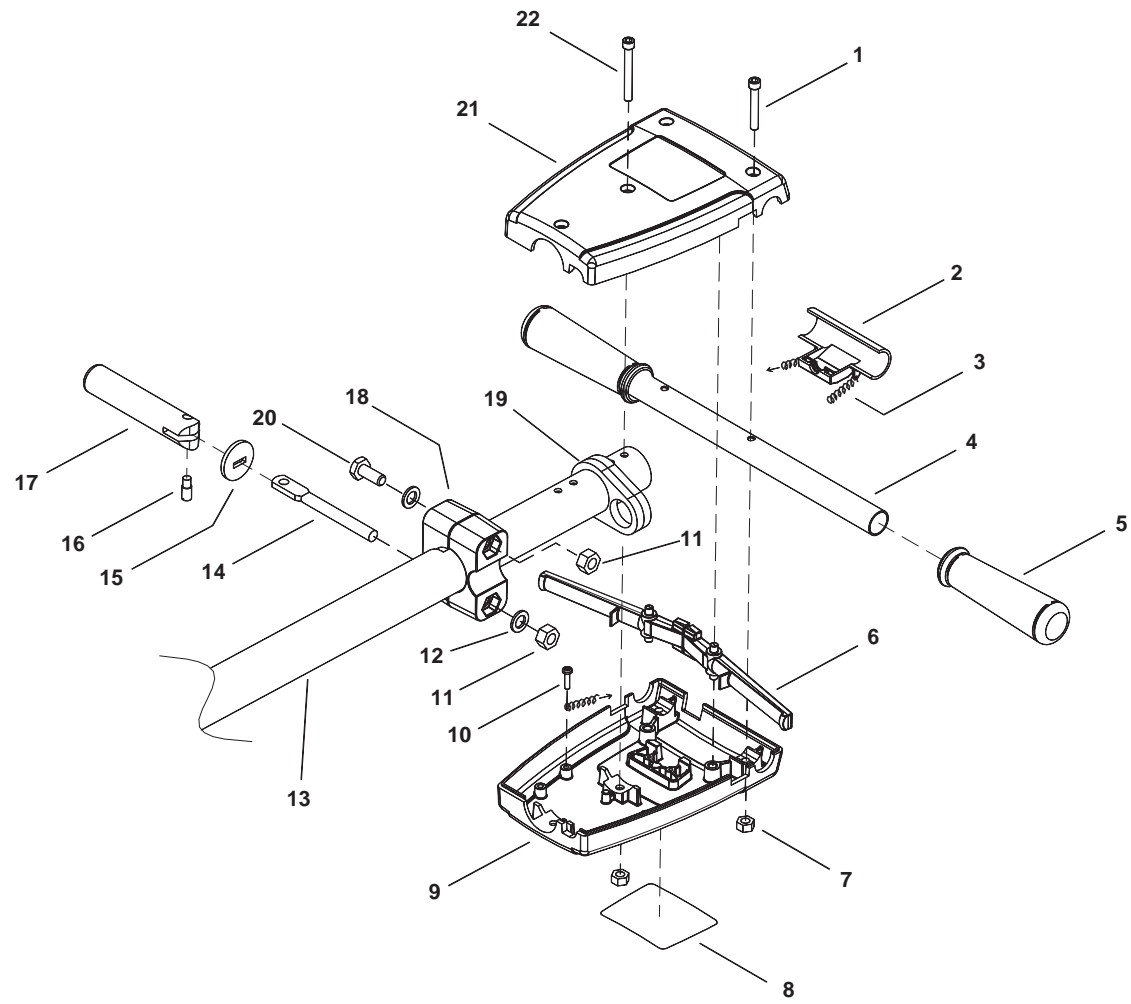
DRIVE/PAD LOCK GROUP



DRIVE/PAD LOCK GROUP

REF	PART NO.	PRV NO.	QTY	DESCRIPTION	SERIAL NO. FROM	NOTES:
1	86288740	70709	2	SCR, SET M8 X 1.25 X 8MM CUP POINT		
2	86010720	87086	4	WASHER, M10 X 30 PLTD		
3	86006920	70507	4	SCR, 3/8-16 X 3/4 HHCS GR5 PLTD		
4	86004820	48041	1	KEY, 3/16 SQ X 7/8 CRS		
5	86223280	64106	1	PULLEY, .625 X 3.45		
6	86225730	87218	1	WASHER, M6 (20.5OD X 1.6T) PLTD		
7	86275570	70505	1	SCR, 1/4-20 X 1.00 HHCS GR5 PLTD DL		
8	86215330	14424	1	BELT, DRIVE 38 IN		
9	86223480	67450	2	RING, 52MM INTERNAL SNAP		
10	86223290	64107	1	PULLEY, BURNISHER		
11	86223470	67449	1	RING, 20MM EXTERNAL SNAP		
12	86276730	70719	3	SCR, M4 X 8MM LG PPHMS		
13	86223970	09133	1	BEARING, 20MM X 52MM		
14	86217510	27913	1	COVER, BEARING		
15	86222480	66426	1	PAD DRIVER, 20 IN BURNISHER FLEX		
16	86246740	51353	1	LOCK, PAD DRIVER BLUE		
17	86276740	70720	3	SCR, #10 X 3/8 PPHST TYPE B		
18	86006670	70201	8	SCR, 1/4-20 X 3/4 FHCS DL		
19	86223980	09134	1	BEARING, 25MM X 52MM		
20	86214940	03115	1	AXLE, PAD DRIVER		

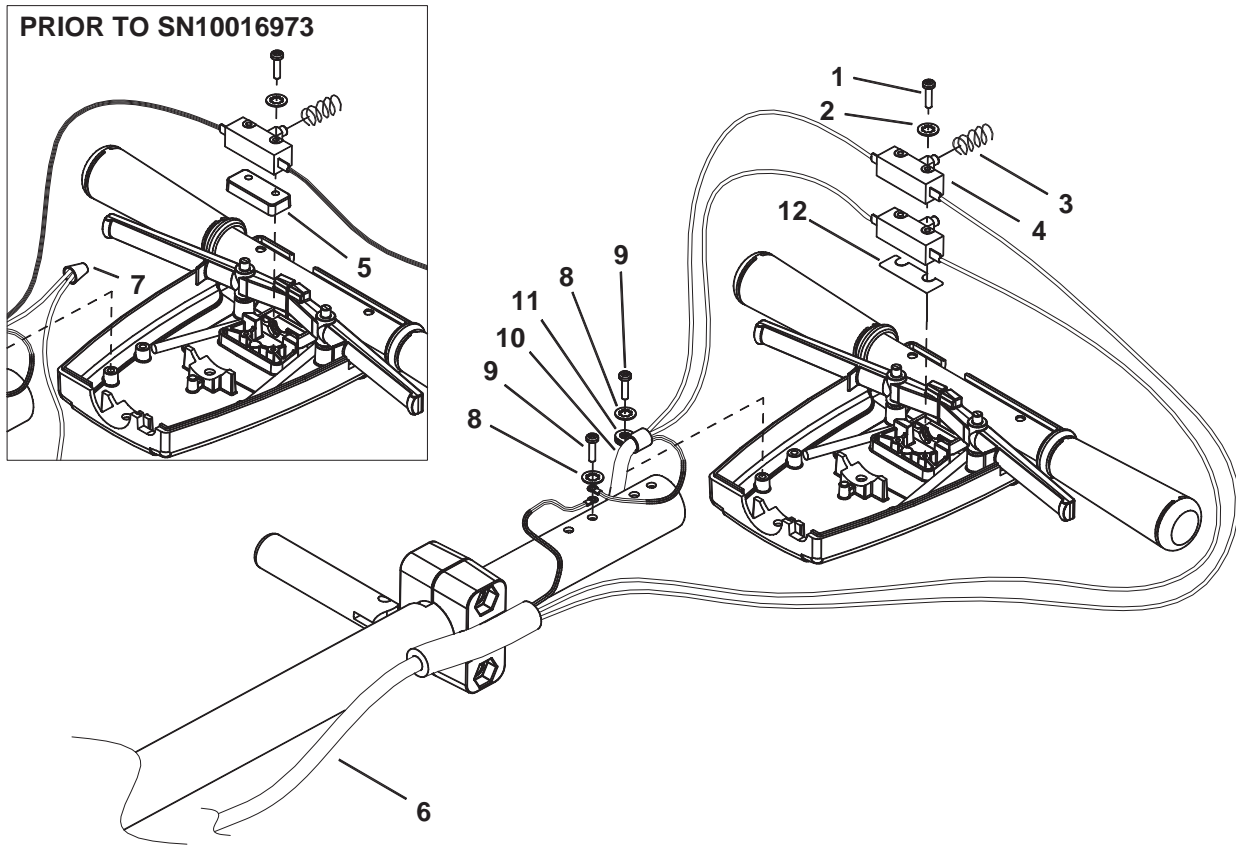
HANDLE GROUP



HANDLE GROUP

REF	PART NO.	PRV NO.	QTY	DESCRIPTION	SERIAL NO. FROM	NOTES:
1	86136670	70686	2	SCR, M6 X 45 SHCS BLK		
2	86005150	51326	1	LOCK, SAFETY HANDLE		
3	86224740	73990	2	SPRING, EXT. .5OD X 3.5L		
4	86225370	78437	1	TUBE, GRIP HANDLE		
5	86004070	36196	2	GRIP, POLISHER HANDLE		
6	86005160	51327	2	LEVER, SWITCH		
7	86136350	57274	4	NUT, M6 X 1		
8	86219740	500194	1	LABEL, WARNING		
9	86219320	41363	1	HOUSING, POLISHER HANDLE REAR		
10	86288450	70689	2	SCR, M4.8 X 10 HHTF TYPE B		
11	86136360	57275	3	NUT, M10 X 1.5 HEX NYLOCK PLTD		
12	86010720	87086	3	WASHER, M10 X 30 PLTD		
13	86225420	78544	1	TUBE ASM, HANDLE EXTND		
14	86223550	67430	1	ROD, HANDLE ADJUSTMENT		
15	86225710	87202	1	WASHER, BEARING (HANDLE ADJ)		
16	86222560	66334	1	PIN, PIVOT HANDLE ADJUSTMENT		
17	86215130	14344	1	BAR, HANDLE ADJUSTMENT		
18	86215380	140393	1	BLOCK, HANDLE MOUNT		
19	86216370	14434	2	BUMPER, BURNISHER HANDLE		
20	86136700	70692	1	SCR, M10 X 75 HHCS PLTD		
21	86219330	41366	1	HOUSING, POLISHER HANDLE FRONT		
22	86136680	70687	2	SCR, M6 X 50 SHCS BLK		
23	86218500	38316	1	HANDLE, BRNSHR EXTND		
24	86224300	730021	1	SPACER, POLISHER HANDLE		
25	86216920	23206	1	CORDSET, 14/3 X 52" SJT BLK		
26	86224930	730012	1	STRAIN RELIEF, 14/3 STRAIGHT		
27	86136720	70701	1	SCR, M10 X 1.5 X 90 HHCS PLTD		

WIRING GROUP



WIRING GROUP

REF	PART NO.	PRV NO.	QTY	DESCRIPTION	SERIAL NO. FROM	NOTES:
1	86136780	70801	2	SCR, M3.5 X 40 PHTF TYPE B	10020019	WAS 70688
2	86137290	87057	2	WASHER, M4 SHAKEPROOF		
3	86224750	73993	1	SPRING, COMP, .48OD X .91L		
4	86007110	72123	2	SWITCH, 25A SPST 125-250V SNAP	10020019	WAS QTY 1
5	86224550	73989	1	SPACER, SWITCH POLISHER		
6	86234150	23167	1	CORD SET, 14/3 STO X 50' YLW		
7	86247920	57069	1	NUT, ORG WIRE (2-5 18G/2-14G)		
8	86137330	87208	2	WASHER, M5 SHAKEPROOF PLTD		
9	86288450	70689	2	SCR, M4.8 X 10 HHTF TYPE B		
10	86216920	23206	1	CORDSET, 14/3 X 52", SJT, BLK		
11	86198450	20005	1	CLAMP, 5/16 NYLON		
12	86215140	140674	1	BARRIER SHEET	10020019	

SUGGESTED SPARE PARTS

PART NO.	PRV NO.	DESCRIPTION	SERIAL NO. FROM	NOTES:
86225710	87202	WASHER, BEARING (HANDLE ADJ)		
86224740	73990	SPRING, EXT .5 OD X 3.5 L		
86224750	73993	SPRING, COMP .48 OD X .91L		
86007110	72123	SWITCH, 25A SPST 125-250V SNAP		
86215130	14344	BAR, HANDLE ADJ		
86222560	66334	PIN, PIVOT HANDLE ADJ		
86223550	67430	ROD, HANDLE ADJ		
86216720	140694	CIRCUIT BREAKER, 25 AMP MP/MB		
86223390	67488	RECTIFIER, 50A 600V BRIDGE		
86001820	14404	BRUSH SET MOTOR (PKG OF 4)		
86003660	34378	FUSE		
86003670	34379	FUSE HOLDER		
86001020	09135	BEARING, MOTOR		
86215460	140397	BRACKET, HANDLE LINK		
86226020	89206	WHEEL, 5D X 1.25 X 13MM ID GRY		
86225720	87203	WASHER, 14MM ID X 36MM OD		
86216600	27871	CAP, EXTRUSION		
86216360	14423	BUMPER, EXTURSION 44.30 IN		
86222270	57276	NUT, PUSH FLAT RD .51 RD		
86223470	67449	RING, 20M EXTERNAL SNAP		
86222480	66426	PAD DRIVER, 20IN BURNISHER FLEX		
86246740	51353	LOCK, PAD DRIVER BLUE		
86223970	09133	BEARING, 20MM X 52MM		
86215330	14424	BELT, DRIVE 38 IN		
86223980	09134	BEARING, 25MM X 52MM		
86217510	27913	COVER, BEARING		



WINDSOR INDUSTRIES
North American New Machine Warranty
 Effective on all products shipped *AFTER* July 31, 2007

Limited Warranty

Windsor Industries warrants new machines against defects in material and workmanship under normal use and service to the original purchaser. Any statutory implied warranties, including any warranty of merchantability or fitness for a particular purpose, are expressly limited to the duration of this written warranty. Windsor will not be liable for any other damages, including but not limited to indirect or special consequential damages arising out of or in connection with the furnishing, performance, use or inability to use the machine. This remedy shall be the exclusive remedy of the buyer. The warranty period is subject to the conditions stated below.

10 / 3 Warranty: 10 Years Polyethylene (PE) Housings, 3 Years Parts, and Service Labor

Subject to conditions outlined below, Windsor Industries warrants rotationally molded PE housings and parts on all of its machines to be free from defects in material and workmanship, under normal use and service for ten (10) years to the original owner.

Under this warranty we guarantee the performance of non-polyethylene parts and components to be free from defects for up to three (3) years or up to 2,500 hours of operation, whichever comes first, to the original end user. Parts replaced or repaired under this warranty are guaranteed for the remainder of the original warranty period. (See table below)

Service labor charges are covered for up to three (3) years or up to 2,500 hours of operation, whichever comes first, from the date of purchase through authorized Windsor service provider. No travel coverage is extended for cord-electric models. See table below for each general product model warranty coverage.

Product	PE Housing & Parts	Non- PE Parts	Service Labor	Travel
Rider / Stand up Scrubbers	10 years	3 years or 2000 hours	3 years or 2000 hours	6 Months
Rider Sweepers	10 years	3 years	3 years	6 Months
Walk Behind Scrubbers	10 years	3 years or 2500 hours	3 years or 2500 hours	6 Months
Walk Behind Sweepers	10 years	3 years	3 years	6 Months
Battery Burnishers	10 years	3 years	3 years	6 Months
Extractors / Compass	10 years	3 years	3 years	-
Polishers / Elec. Burnishers / GH/iCapsol Mini	10 years	3 years	3 years	-
Wide Areas Vacuums	10 years	3 years	3 years	-
VacPak Vacuums	10 years	1 year	1 year	-
Tracer/Flex Sweepers/Scrubbers	10 years	3 year	3 months	90 days
Air Movers / Dri-matic / TITAN™ /Rombus/Priza	1 year	1 year	1 year	-
Canister Vacuum	1 year	1 year	1 year	-
Wet/Dry Vacuum	1 year	1 year	1 year	-
Broom	1 year	1 year	1 year	-
Steamer	1 year	1 year	1 year	-
Propane Burnishers / Strippers	-	2 year	1 year	-

VERSAMATIC® / FLEXAMATIC®	Brush motor, Vacuum motor, Belts, Swivel Neck – 3 years	All other parts/Labor – 1 year
SENSOR®	Vacuum motor, Belts – 2 years	All other parts/Labor – 1 year

Product exceptions and Exclusions:

- Extractor brush motors, **ALL** pump motors, **ALL** PC boards and electronics, **ALL** Vacuum motors (other than VERSAMATIC®, SENSOR® and FLEXAMATIC®), **ALL** pumps, and diaphragms/Tank bags carry a one (1) year parts and service labor warranty.
- The Eagle-Robin® engines have three (3) year manufacturer’s warranty. The Honda® and Kawasaki® engines have two (2) year manufacturer’s warranty. **NOTE:** The engine warranty is administered through the engine manufacturer and must be repaired at an authorized service center.

Windsor Industries reserves the right to change its warranty policy without notice



WINDSOR INDUSTRIES
North American New Machine Warranty
Effective on all products shipped *AFTER* July 31, 2007

Normal wear items and accessories including, but not limited to, belts, brushes, FLEXAMATIC® foot pedal, capacitors, carbon brushes, casters, clutches, cords, filters, finishes, gaskets, hoses, light bulbs, rectifiers, switches, squeegees, bearings, pulleys, relays, actuating cables, wheels, tires, and propane tanks will be warranted for manufacturing defects for 90-days from the purchase date.

The warranty commences on the purchase date by the original end user from an authorized Windsor agent, subject to proof of purchase. The Machine Registration Card must be completed and returned immediately at the time of purchase. If proof of purchase cannot be identified, the warranty start date is 90 days after the date of sale to an authorized Windsor distributor. Parts replaced or repaired under warranty are guaranteed for the remainder of the original warranty period.

90 Day Warranty Extension Available

Upon receipt of the Machine Registration Card, Windsor will extend by 90 days, from the date of purchase, all items included under the one-year provision. This applies only to one-year items and does not include 90-day wear items.

This Warranty Shall Not Apply To:

1. Any product that has been subject to abuse, misuse, neglect or unauthorized alteration (including the use of incompatible or corrosive chemicals or overloading of capacity).
2. Products that have experienced shipping or freight damage.
3. Repairs necessary to correct any failure due to improper pre-delivery service and inspection by the selling dealer.
4. Excessive time for cleaning units in preparation for repair.
5. Any repairs resulting from poor initial service work or improper diagnosis.
6. Tune-up parts such as plugs, plug wires and condensers.
7. Any design alterations performed by an organization not authorized or specified by Windsor.
8. Battery and charger warranties are handled directly with the manufacturer (Trojan® batteries and Lester® chargers).
9. High-pressure washing.
10. Electrical components exposed to moisture.

If difficulty develops during the warranty period, contact the authorized Windsor agent from whom the product was purchased. Windsor Industries may elect to require the return of components to validate a claim. Any defective part to be returned must be shipped freight prepaid to an authorized Windsor Distributor/Service Center or to the Windsor factory.

Use Of Parts Not Approved By Windsor Industries Will Void All Warranties

This warranty is valid only for all products Shipped/Sold *AFTER* July 31, 2007. A product sold before that date shall be covered by the limited warranty in effect at the date of sale to the original purchaser.