

BEACON LED LIGHT TOWER REPLACEMENT PARTS GUIDE





SAFETY PRECAUTIONS:

FAILURE TO FOLLOW THESE PRECAUTIONS COULD RESULT IN SERIOUS INJURY OR DEATH

MAINTENANCE PRECAUTIONS

- PERFORM DAILY INSPECTIONS OF THE EQUIPMENT TO ENSURE THAT NO DAMAGE EXISTS THAT MIGHT INTERFERE WITH SAFE OPERATION
- ENSURE THAT ANY DAMAGED COMPONENTS ARE REPLACED OR REPAIRED IMMEDIATELY USING FACTORY APPROVED PARTS
- BEFORE PERFORMING ANY MAINTENANCE TASKS, ENSURE THAT LIGHT TOWER HAS BEEN DISCONNECTED FROM ALL POWER SOURCES
- REMOVE ALL GENERATORS AND SOURCES OF FUEL FROM THE CABINET AND SURROUNDING AREA BEFORE UNDERTAKING ANY MAINTENANCE
- ONLY SKILLED TECHNICIANS WHO ARE FAMILIAR WITH THE OPERATION OF THE LED LIGHT TOWER SHOULD PERFORM MAINTENANCE TASKS ON THE LIGHT TOWER

OPERATING PRECAUTIONS

- DO NOT DEPLOY THE MAST IF THERE IS EXPECTATION OF HEAVY WINDS
- ENSURE THAT THE BEACON LED TOWER IS MADE LEVEL BEFORE DEPLOYING THE MAST. STABILIZATION JACKS CAN BE USED TO LEVEL THE UNIT
- DO NOT DEPLOY THE MAST UNTIL THE STABILIZATION JACKS HAVE BEEN EXTENDED FULLY AND ARE FIRMLY PLANTED ON THE GROUND
- KEEP CLOTHING, HAIR AND APPENDAGES CLEAR OF MOVING PARTS

- WHEN OPERATING THE MACHINE, DO NOT TOUCH HOT SURFACES OR EXPOSE COMBUSTABLE MATERIAL TO HOT SURFACES

TRANSPORTATION PRECAUTIONS

- DO NOT TRANSPORT THE BEACON LED TOWER WITH FUEL INSIDE THE CABINET
- USE APPROPRIATE FUEL HANDLING PRECAUTIONS AT ALL TIMES WHEN TRANSPORTING AND OPERATING FUEL TANKS AND GENERATORS
- MAST MUST BE FULLY RETRACTED AND LIGHT HEAD ASSEMBLY LOWERED TO THE HORIZONTAL POSITION OR REMOVED ENTIRELY PRIOR TO TRANSPORT
- BEACON LED TOWER MUST BE TIED DOWN DURING TRANSPORTATION



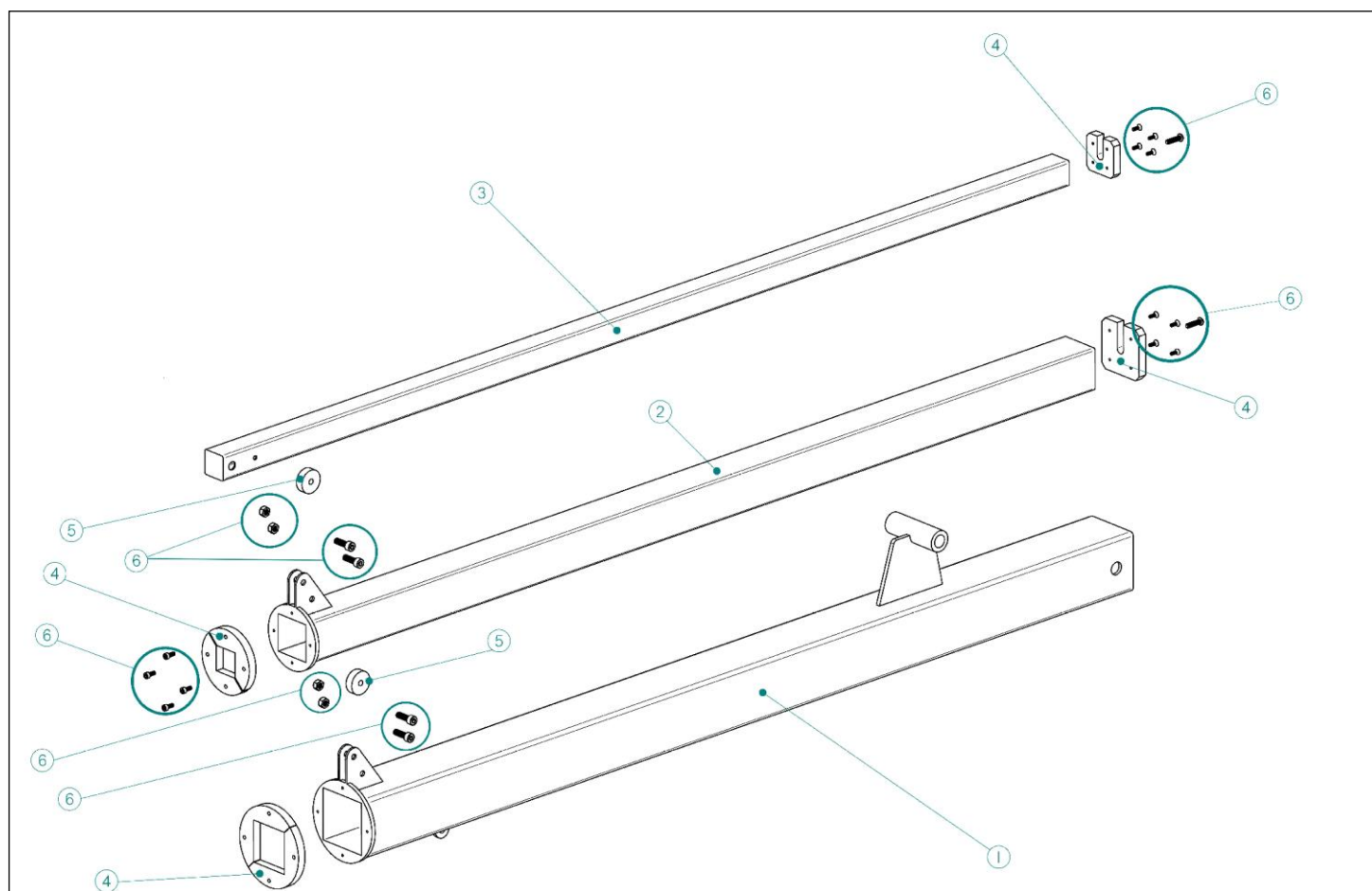
ELECTRICAL PRECAUTIONS

FAILURE TO FOLLOW THESE PRECAUTIONS COULD RESULT IN ELECTROCUTION

- ENSURE THAT THE UNIT IS CLEAR OF OVERHEAD WIRES AND OBSTRUCTIONS BEFORE DEPLOYING THE MAST
- DO NOT USE UNIT IF ELECTRICAL CORDS ARE CUT OR WORN THROUGH
- DO NOT ALLOW WATER TO CONTACT LIVE ELECTRICAL COMPONENTS. REGULAR INSPECTIONS SHOULD BE UNDERTAKEN TO ENSURE THAT ELECTRICAL COMPONENTS ARE IN GOOD OPERATING CONDITION
- WHEN UTILIZING A GENERATOR WITH THE BEACON LED TOWER FOLLOW ALL OPERATING INSTRUCTIONS PROVIDED BY GENERATOR MANUFACTURER INCLUDING PROPER GROUNDING PROCEDURES

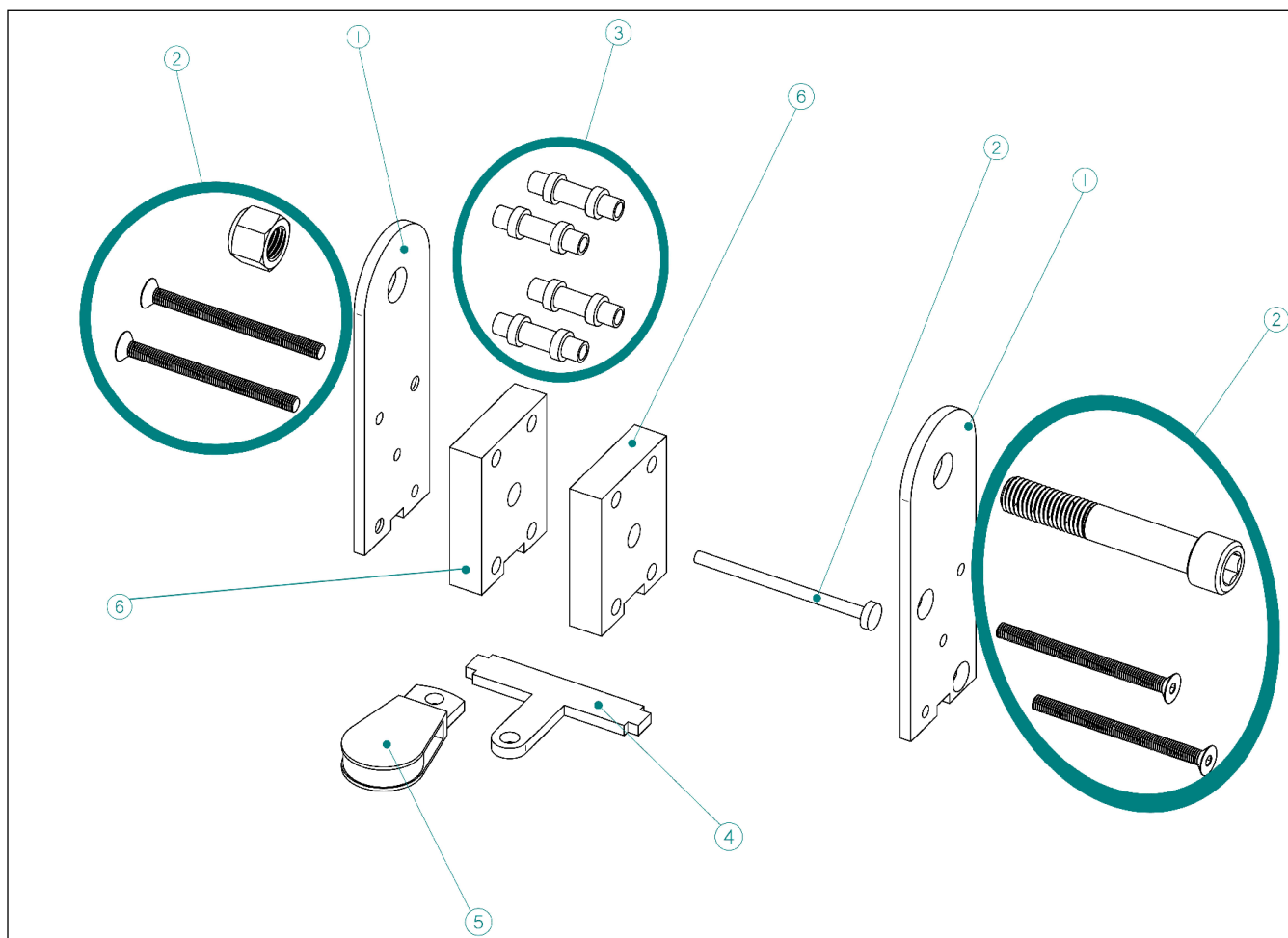
MAST ASSEMBLY

	<u>PART NUMBER</u>	<u>DESCRIPTION</u>	<u>REQUIRED</u>
1	LE980LED-T-P1M1	STAGE 1 MAST	1
2	LE980LED-T-P1M2	STAGE 2 MAST	1
3	LE980LED-T-P1M3	STAGE 3 MAST	1
4	LE980LED-T-P1MC	SET OF NYLON END CAPS – 4 PIECES	1
5	LE980LED-T-P8	PULLEY - 3/16" CABLE x 1-1/2" DIAMETER SHEAVE	1
6	LE980LED-T-HDWM	MAST HARDWARE SET	1



MAST SLIDER ASSEMBLY

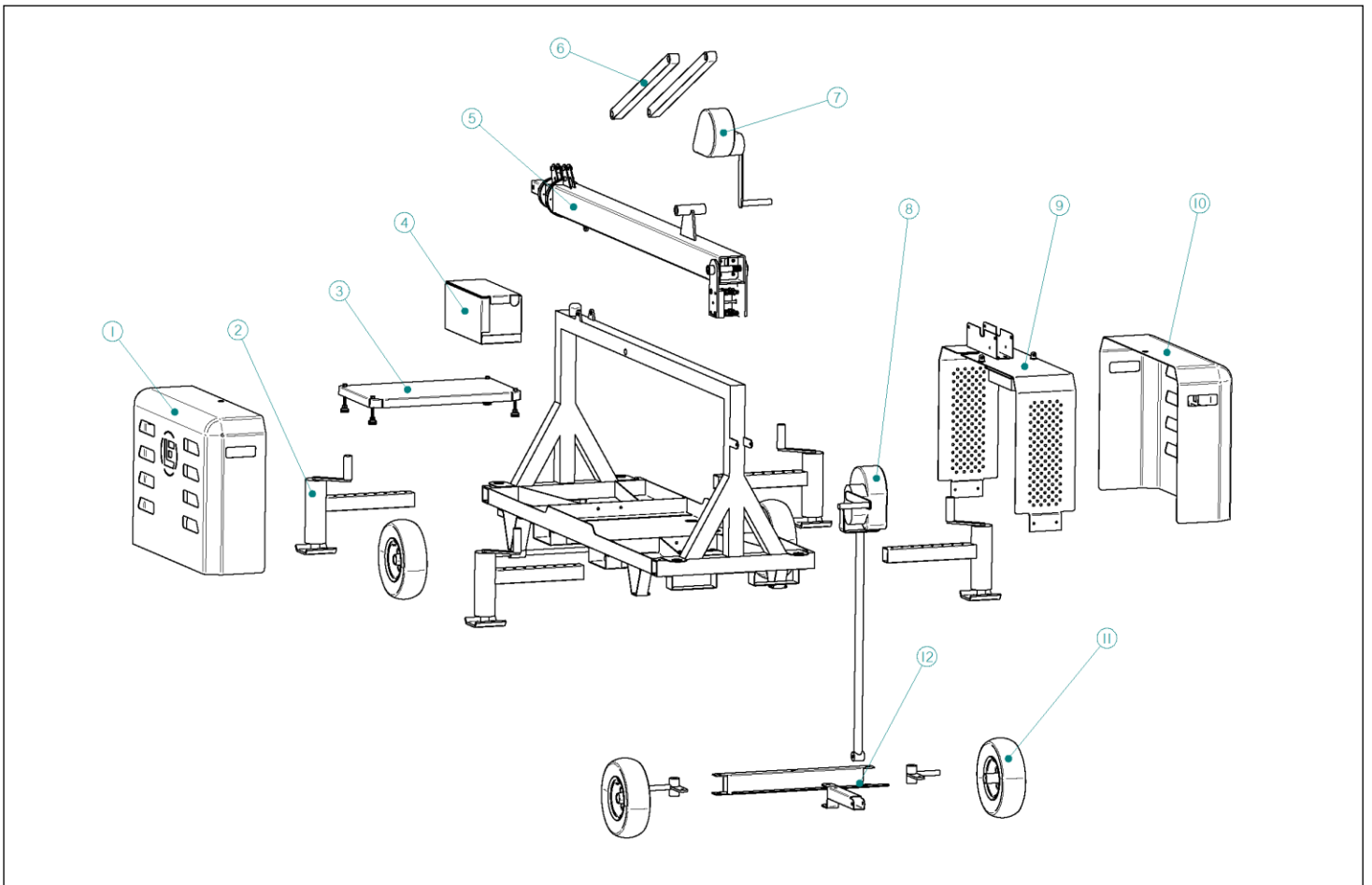
	<u>PART NUMBER</u>	<u>DESCRIPTION</u>	<u>REQUIRED</u>
1	LE980LED-T-P1SB	SLIDER BRACKETS (SET OF 2)	1
2	LE980LED-T-HDWS	SLIDER HARDWARE	1
3	LE980LED-T-P1MR	ROLLERS (SET OF 4)	1
4	LE980LED-T-P15A	PULLEY ANCHOR	1
5	LE980LED-T-P15	FIXED BLOCK PULLEY - 3/16" CABLE x 1-1/2" DIAMETER SHEAVE	1
6	LE980LED-T-P1SNB	NYLON SLIDER BLOCKS (SET OF 2)	1



MAIN CHASSIS ASSEMBLY

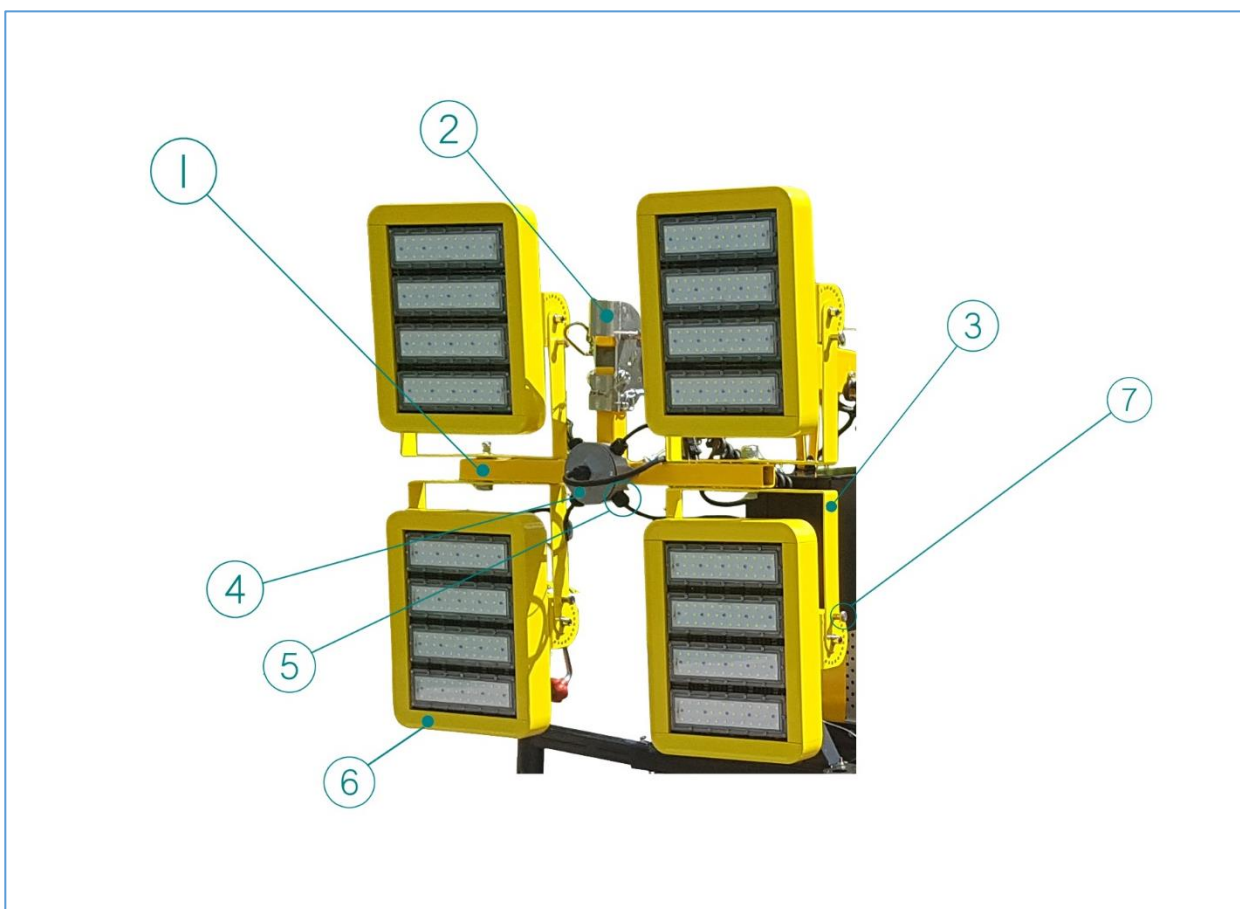
	<u>PART NUMBER</u>	<u>DESCRIPTION</u>	<u>REQUIRED</u>
1	LE980LED-T-P1YC	ENCLOSURE DOOR (WITHOUT OUTLET BOX CUTOUT)	1
2	LE980LED-T-P22	OUTRIGGERS	4
3	LE980LED-T-P11	FUEL TANK SHELF (GRAVITY FEED CARTS ONLY)	1
4	DISCONTINUED	CABLE STORAGE BOX (OPTIONAL)	1
5	SEE ABOVE	MAST ASSEMBLY (SEE MAST ASSEMBLY DRAWING)	
6	LE980LED-T-P1MB	MAST STABILIZING BARS	2
7	LE980LED-T-P3	WINCHES	2
7	LEC-316PS	REPLACEMENT WINCH CABLE	2
8	LE980LED-T-P14	STEERING ASSEMBLY	1
9	LE980LED-T-P1CC	CENTRE CHANNEL	1
10	LE980LED-T-P1YC2	ENCLOSURE DOOR (WITH OUTLET BOX CUTOUT)	1
11	LE980LED-T-P2	WHEELS	4
NOT PICTURED	LE980LED-T-P10	6 GALLON FUEL TANK (FUEL PUMP VERSION)	1
NOT PICTURED	LE980LED-T-P17	3 GALLON FUEL TANK (GRAVITY FEED VERSION)	1
NOT PICTURED	CALL	AUXILLIARY FUEL TANK HOOKUP – GENERATOR DEPENDANT	CALL
NOT PICTURED	LE980LED-T-P23	SET OF SAFETY LABELS	1
NOT PICTURED	LEDB-P30	OUTLET BOX	1

NOT PICTURED	LEDB-P31	OUTLET BOX	1
NOT PICTURED	LE980LED-T-P7	GFCI PLUG AND SWITCH	1



LIGHT HEAD ASSEMBLY

	<u>PART NUMBER</u>	<u>DESCRIPTION</u>	<u>REQUIRED</u>
1	LE980LED-T-P12	T-BAR	1
2	LE980LED-T-P4	MOUNTING BRACKET	4
2	LE980LED-T-P13	REPLACEMENT HITCH PIN	1
3	LE980LED-P2A	MOUNTING YOKE	1 / LIGHT HEAD
4	LE980LED-T-P6	JUNCTION BOX	1
4	LE980LED-T-P6A	JUNCTION BOX COVER	1
5	LE980LED-T-P18A/B	STRAIN RELIEF SET	5
6	LE980LED	LED LIGHT HEAD	2 OR 4
7	LE980LED-P5	SPRING PIN	2 / LIGHT HEAD



LIND EQUIPMENT LTD

CANADA:

**145 RENFREW DRIVE
MARKHAM, ON, CANADA
L3R9R6**

USA:

**300 INTERNATIONAL DRIVE
WILLIAMSVILLE NY 14221**

P: (877) 475-LIND

F: (877) 475-2030

www.lindequipment.net