

BX-3 MASONRY SAW

PARTS LIST

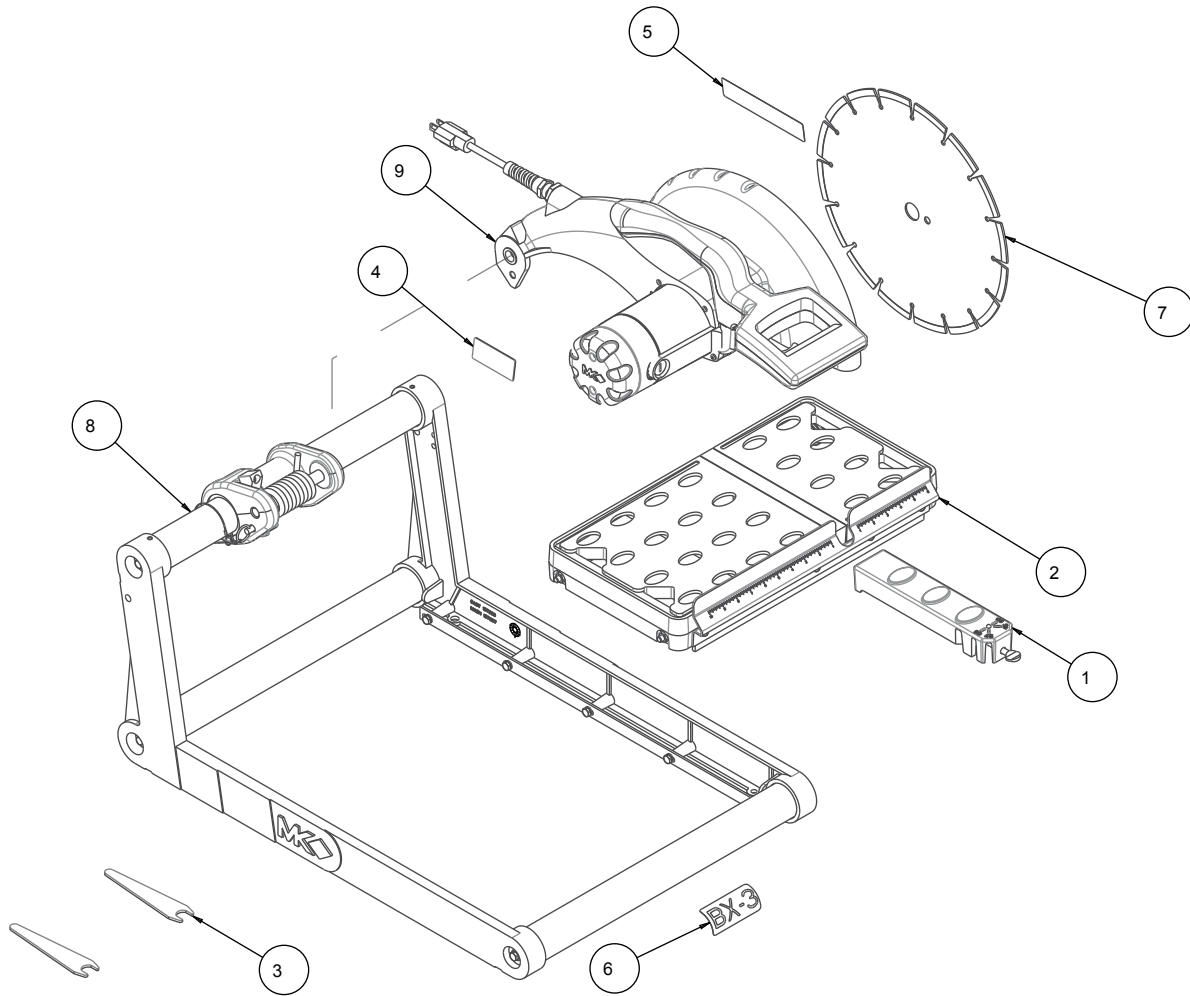
MODELS	PART #
BX-3 (Dry)	157721X
BX-3 (Wet)	157721WX



Revision 108	12.2019
Manual Part No. 158168	

Caution: Read all safety and operating instructions before using this equipment. This owners manual **MUST** accompany the equipment at all times.

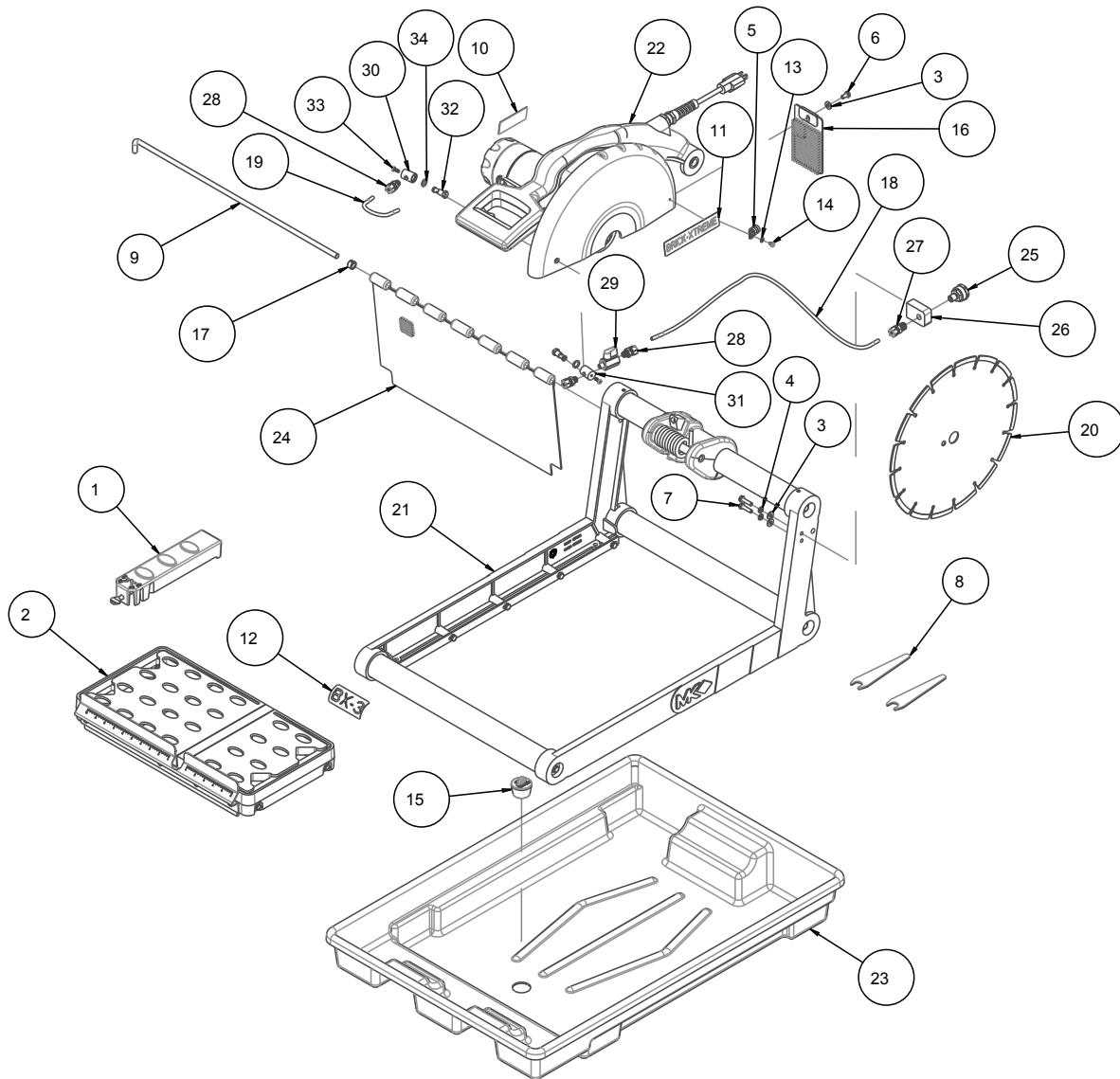
BX-3 SAW - P/N 157721X



BX-3 SAW - P/N 157721X

Item	Description	Part #	Qty
1	RIP GUIDE, BRICK/BLOCK SAW	132332-MK	1
2	ASSY, CONVYR CART	133082	1
3	WRENCH, TILSAW, 11/16 OPEN END	153450	1
4	TAG, SERIAL NUMBER, BLANK	157500-rw	1
5	LABEL, BRICK XTREME	157958	1
6	LABEL, BX3	157959	1
7	CONTRACTOR GRADE 14X125X1 10MM	166308	1
8	ASSY, FRAME, BX3	171265	1
9	ASSY, CUTTING HEAD, BX3	171266	1

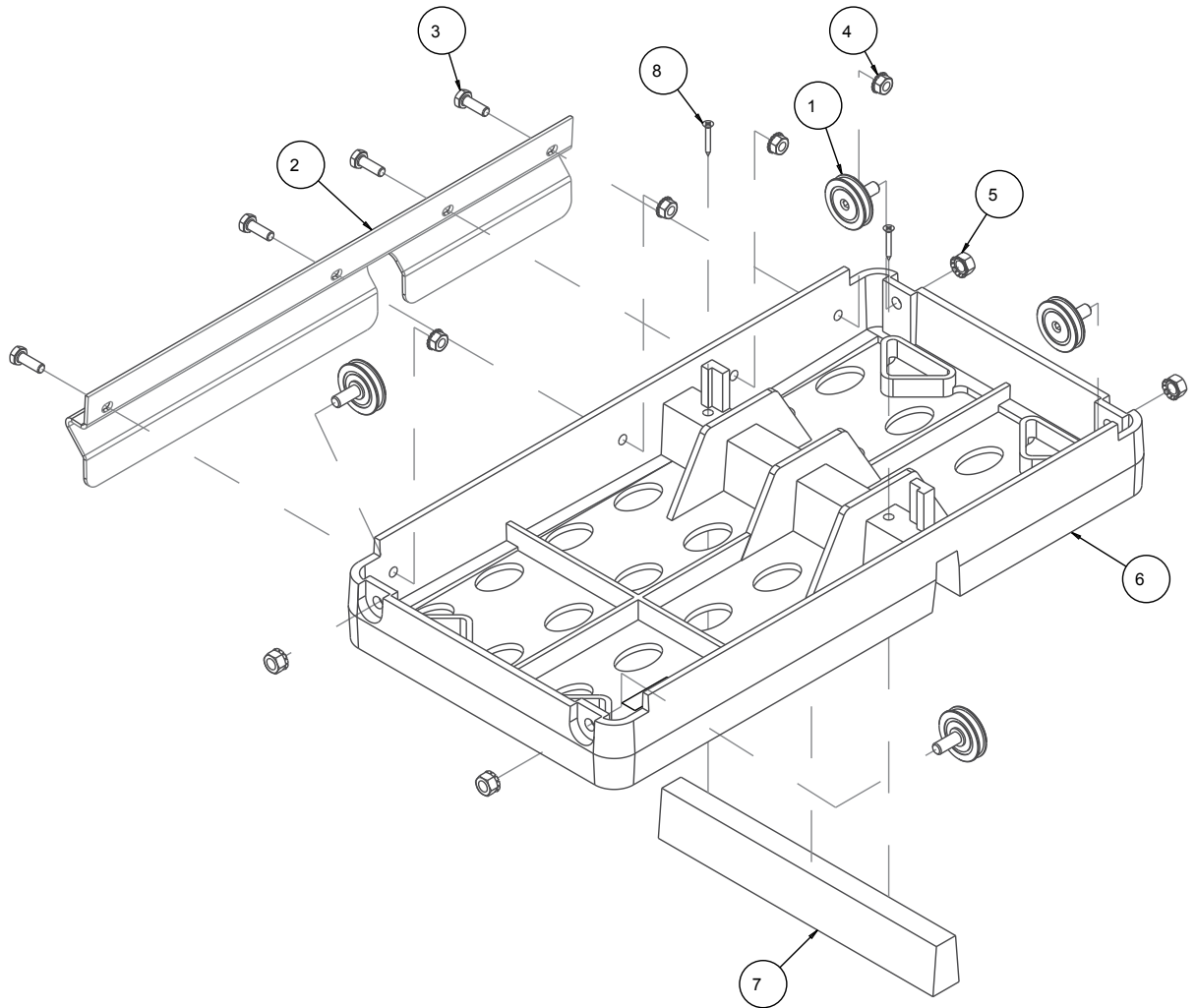
BX-3 SAW - P/N 157721WX



BX-3 SAW - P/N 157721WX

Item	Description	Part #	Qty
1	RIP GUIDE, BRICK/BLOCK SAW	132332-MK	1
2	ASSY, CONVYR CART	133082	1
3	WASHER, FLAT, SAE, 1/4	151915	3
4	WASHER, LOCK, SPLIT, 1/4	152591	2
5	CLAMP, CUSHION LOOP 3/8	152592	1
6	SCREW, 1/4-20 X 1/2 HEX HEAD	152608	1
7	SCREW, HEX HD, TAP, 1/4-20X1	152676	2
8	WRENCH, TILES AW, 11/16 OPEN END	153450	1
9	ROD, SPLASH CURTIAN	153956	1
10	TAG, SERIAL NUMBER, BLANK	157500-RW	1
11	LABEL, BRICK XTREME	157958	1
12	LABEL, BX3	157959	1
13	WASHER, LOCK, IT, #10	158336	1
14	SCREW, PAN HD PHIL 10-24 X 5/16	159494	1
15	DRAIN PLUG, W/RING	159529	1
16	GUARD, SPLASH	160310	1
17	COLLAR, SHAFT 3/8 X 5/8	159494	1
18	TUBING CLEAR PVC, 1/8 X 1/4 (25")	162808	1
19	TUBING, CLEAR PVC, 1/8 X 1/4 (5")	162505	1
20	CONTRACTOR GRADE 14X125X1 10MM	166308	1
21	ASSY, FRAME, BX3	171265	1
22	ASSY, CUTTING HEAD, BX3-WET	171266-W	1
23	PAN, PLASTIC	172593	1
24	CURTAIN, SPLASH	172604	1
25	FITTING, 1/4 MNPT X GRDN HOSE	172609	1
26	BRACKET, HOSE MOUNTING	172610	1
27	FITTING, 1/4 MNPT X 1/4 TUBE	172611	1
28	FITTING, 1/8 MNPT X 1/4 TUBE	172612	1
29	VALVE, BALL, 1/8 FNPT X 1/8 MNPT	172613	1
30	FITTING, BODY, SINGLE SIDED, WATER JET	172614-1	1
31	FITTING, BODY, 2-SIDED, WATER JET	172614-2	1
32	FITTING, WATER JET	172615	1
33	SCREW, PAN HD, SS, SEAL, #8-32 X 1/2	172616	2
34	O-RING, 11	172629	2

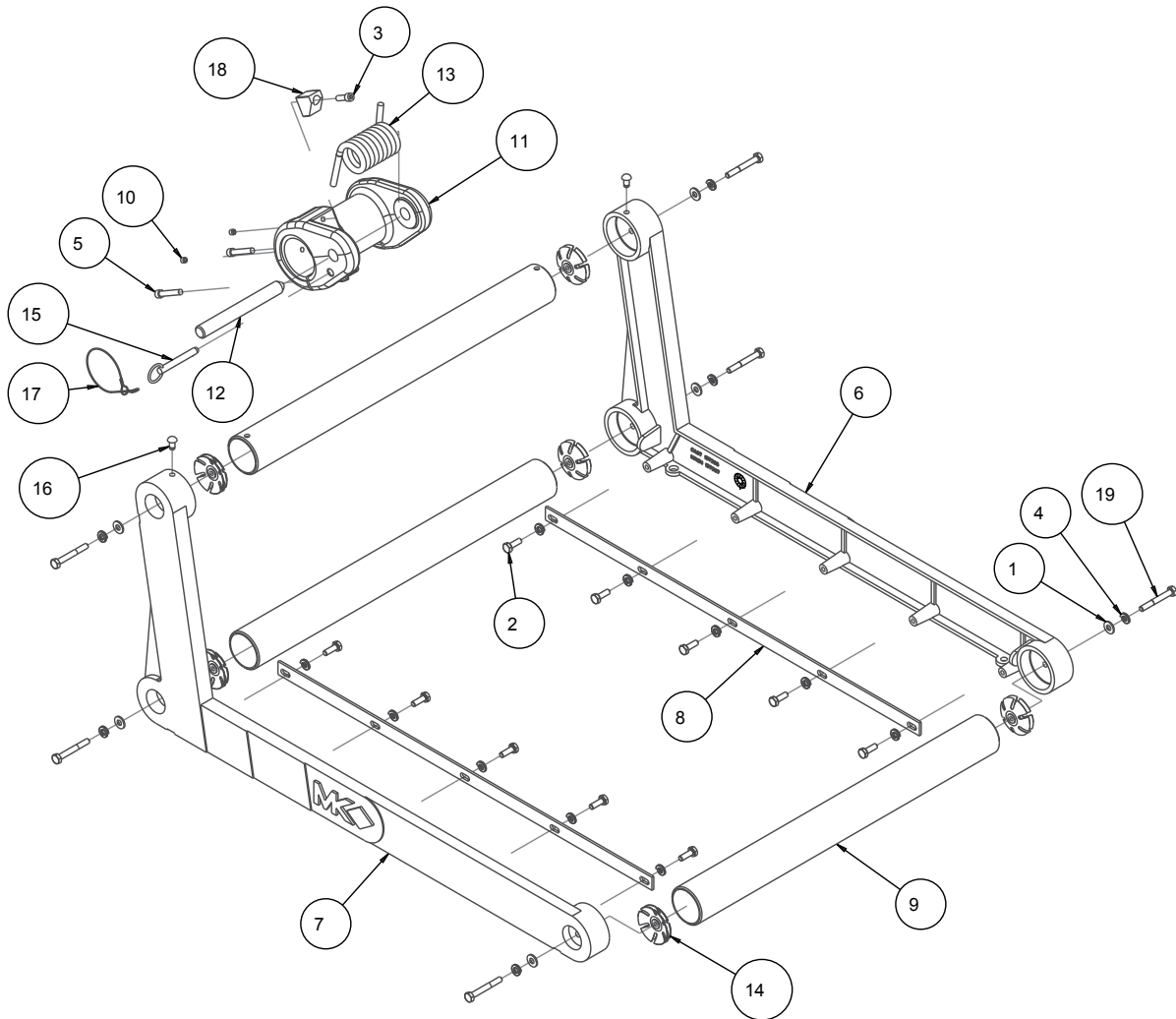
ASSY, CONVYR CART BX-3 - P/N 133082



ASSY, CONVYR CART BX-3 - P/N 133082

Item	Description	Part #	Qty
1	WHEEL, CONVEYOR CART	133090	4
2	BACKSTOP, CONVEYOR CART	134387	1
3	SCREW, HEX HD, 1/4-20 X3/4	152370	4
4	NUT, HEX, TW, 1/4-20	153941	4
5	NUT, HEX TW, 5/15-18	153942	4
6	TABLE, D.C. COMP	158144	1
7	WOOD STRIP, TABLE INSERT	158283	1
8	SCREW, DRYWL, FLAT, HD #6X1	159906	2

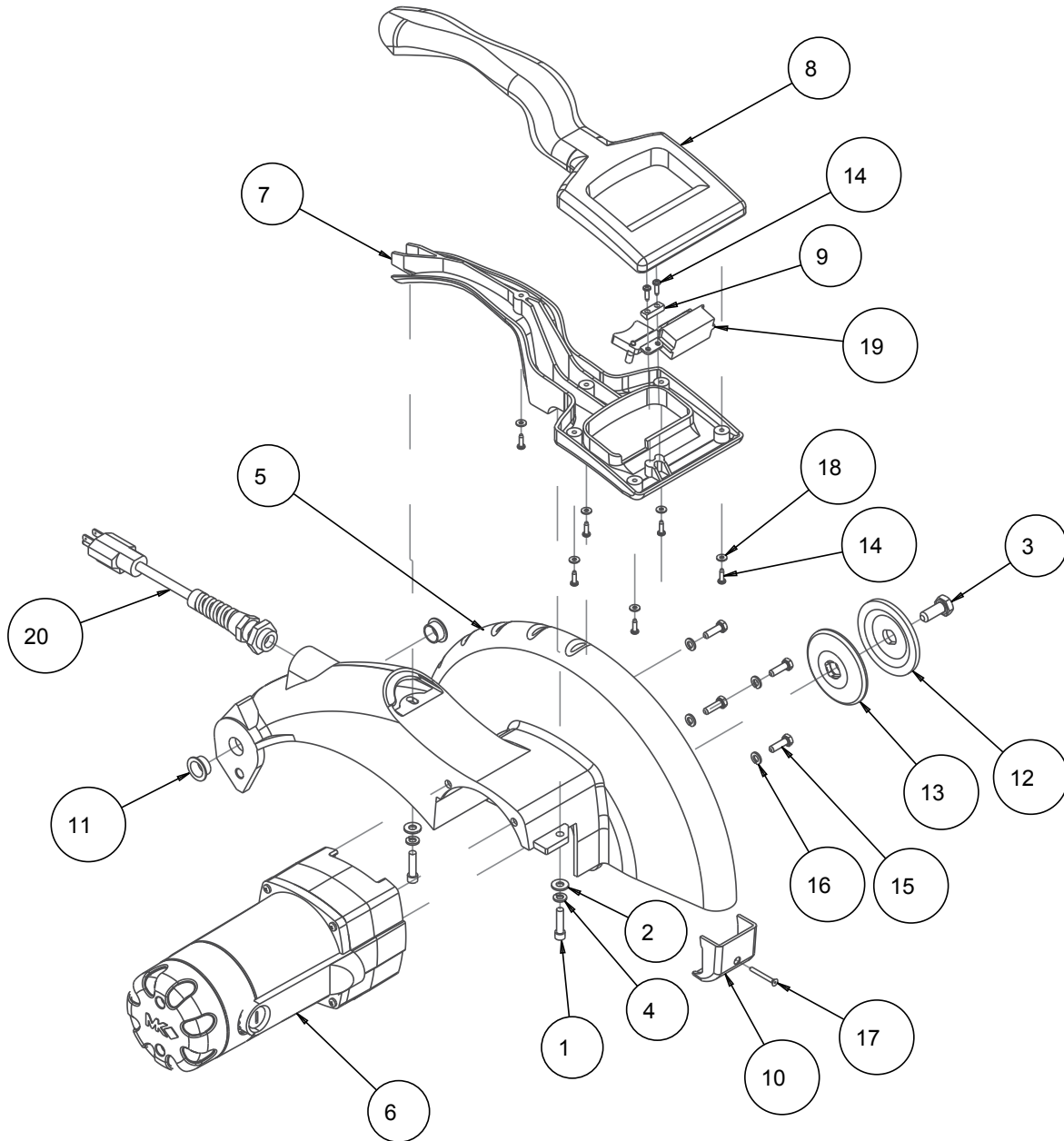
ASSY, FRAME BX-3 - P/N 171265



ASSY, FRAME BX-3 - P/N 171265

Item	Description	Part #	Qty
1	WASHER, FLAT, SAE, 1/4	151915	6
2	SCREW, HEX HD, 1/4-20X3/4	152370	10
3	SCREW, 1/4-20 X 3/4 SOCKET HEAD CAP	152587	1
4	WASHER, LOCK, SPLIT, 1/4	152591	16
5	SCREW, SOC HD CAP, 1/4-20 X 1	154683	2
6	DC FRAME, RIGHT (COMP)	157367	1
7	DC FRAME, LEFT (COMP)	157369	1
8	RAIL, TABLE GUIDE	157383	2
9	SUPPORT, HORIZ FRAME	157384	3
10	SCREW, SET, 14/-20X 1/4	157528	2
11	CLAMP, PIVOT (COMP)	157593	1
12	PIN, PIVOT	157645	1
13	SPRING, TORSION	157702	1
14	TUBE CONNECTOR 1/4-20	157930	6
15	PIN, DETENT, W/RING PULL	157933	1
16	STUD, GROOVED, #16X1/2	158071	2
17	LANYARD, 3/64X8" GALVNZD STEEL	158072	1
18	BLOCK, STOP	158226	1
19	SCREW, HEX HD 1/4-20 X 2	158282	6

BX-3 - ASSY, CUTTING HEAD P/N 171266






SUBSTITUTION TABLE		157599	157801-C
P/N	DESCRIPTION		
171266-W	ASSY, CUT HEAD, BX3-WET	157599-W	SAME

BX-3 - ASSY, CUTTING HEAD P/N 171266

Item	Description	Part #	Qty
1	SCREW, SOC HD CAP, 1/4-20 X 1	151049	2
2	WASHER, FLAT, SAE, 1/4	151915	2
3	SCREW, M10X1/5 HEX HD CAP	152272	1
4	WASHER, LOCK, SPLIT, 1/4	152591	2
5	ARM, MOTOR MOUNT (COMP)	157599	1
6	MTR, 115V, 15A, AC	157801-C	1
7	HANDLE, LOWER	157875	1
8	HANDLE, UPPER	157874	1
9	PLATE, SWITCH MOUNTING	157876	1
10	WIRE COVER, BX3	157880	1
11	BUSHING, FLANGE	157932	2
12	FLANGE, OUTER	158105	1
13	FLANGE, Ø 3.0 INNER	158106	1
14	SCREW, PAN HD, M3.5X12MM	158156	8
15	SCREW, HEX HEAD CAP, M6X1X20MM	158158	4
16	WASHER, LOCK, SPLIT, M6	158159	4
17	SCREW, FLAT HD, ALN, #6-32X1-1/4	158160	1
18	WASHER, FLAT, SAE, #6	158231	6
19	ASSY, SWITCH	158323-MK	1
20	HARNESS, WIRE	158329-R	1

ACCESSORIES

ITEM	P/N	DESCRIPTION	
1.	132332-MK	Adjustable Cutting Guide*	
2.	133090	Roller Wheel*	
3.	156427	Protective Wooden Strip*	
4.	157729	Motor Air Filter*	
5.	152610	Ground Fault Circuit Interrupter	
6.	157981	BX-3 Stand	
7.	168244	BX-3 Wet Stand	

**Included at time of shipping*

ORDERING INFORMATION

You may order MK Diamond products through your local MK Diamond distributor or, you may order direct from MK Diamond.

When ordering direct from MK Diamond, please have the following information ready before calling:

- The Model Number of the saw
- The Serial Number of the saw
- Where the saw was purchased and when
- The Part Number for the part(s) being ordered
- The Part Description for the part(s) being ordered

NOTE: Standard orders are \$50.00 or more when ordering direct from MK Diamond. A \$6.00 charge will be added to orders having a net billing value under \$50.00. A nominal handling fee of \$5.00 may apply to some orders.

All parts may be ordered by calling toll free to – 800 421-5830 or 310 539-5221 and asking for Customer Service. For technical questions, call – 800 474-5594.

RETURN MATERIALS POLICY

To expedite the service relative to the return of a product purchased through MK Diamond, please observe the following:

NOTE: When returning all items, they must have been purchased within the previous twelve (12) months.

- Have the Model Number of the saw
- Have the Serial Number of the saw
- Have the location of where the saw was purchased
- Have the date when the saw was purchased
- Contact Customer Service for approval to return the item(s)
- Obtain a Returned Goods Number (RGA) authorizing the return
- Follow the packaging instructions in the following section
- Ensure the RGA number is on the outside of the returned package
- Ensure your item(s) are prepaid to the destination

For returned items, call toll free to – 800 421-5830 or 310 539-5221 and ask for Customer Service.

PACKAGING INSTRUCTIONS

- Remove the Cutting Head and Support Angle Assembly
- Dry the saw before shipping
- When packing, include the following: Saw, Diamond Blade, Blade Guard and Support Angle Assembly and Adjustable Cutting Guide (Other Accessories are not required)
- Package the unit in its original container or one of comparable size (do not ship the unit partially exposed)
- Ensure all parts are secured in the packaging to prevent moving

AUTHORIZED SERVICE CENTERS

For quicker repair time, you may contact MK Diamond Customer Service, toll free, at 800 421-5830 or 310 539-5221 for the Authorized Service Center closest to you or visit our web site at www.mkdiamond.com. For technical questions, call – 800 474-5594.

CONTACT

Please contact MK Diamond Products, Inc. Customer Service Department with any questions you might have regarding distributors, parts or service.

Telephone: **(800) 421-5830**

Fax: **(310) 539-5158**

E-mail: **Customer_Service@MKDiamond.com**

Customer Service Hours: **Monday through Friday, 6AM-4PM PST**

MK Diamond Products, Inc.

1315 Storm Parkway

Torrance, CA 90501

MK DIAMOND PRODUCTS, INC. LIMITED WARRANTY

MK DIAMOND PRODUCTS, INC. will guarantee every machine they build, to be free from defects in material and workmanship for (1) one year from date of purchase. The obligation of MK DIAMOND PRODUCTS, INC. under this warranty is limited to the repair or replacement of any parts which, under normal use, prove to be defective in material or workmanship. The parts involved or the unit in question should be returned to MK DIAMOND PRODUCTS, INC. or to a point designated by us, transportation prepaid.

This warranty does not obligate us to bear the cost of labor or transportation charges in connection with replacement or repair of defective parts. Likewise, it shall NOT apply to any unit which has been subjected to misuse, neglect or accident. This warranty does NOT apply to any machine which has been repaired or altered outside our factory.

This warranty does NOT obligate MK DIAMOND PRODUCTS, INC., with respect to items not of our manufacture, such as engines, motors, hydraulics, etc., which are subject to their own guarantees and warranties.

We shall in no event be liable for consequential damages or contingent liabilities arising out of failure of any equipment or parts to operate properly.

WARRANTY: For your (1) one year warranty to be effective, complete the online Product Registration as soon as possible. Visit **www.mkdiamond.com/registration/**

© COPYRIGHT 2019, MK DIAMOND PRODUCTS, INC. ALL RIGHTS RESERVED.

The MK Diamond logo is a registered trademark of MK Diamond Products, Inc. and may not be used, reproduced, or altered without written permission. All other trademarks are the property of their respective owners and used with permission.

MK Diamond may have patents, patent applications, trade marks, copyrights of other intellectual property right covering this product in this document.

This manual MUST accompany the equipment at all times. This manual is considered a permanent part of the equipment and should remain with the unit if resold.

The information and specifications included in this publication were in effect at the time of approval for printing.

BX-3
OWNER'S MANUAL & OPERATING INSTRUCTION



MK Diamond Products, Inc.
1315 Storm Parkway
Torrance, CA 90501

Toll-Free: (800) 421-5830
Phone: (310) 539-5221
Fax: (310) 539-5158
www.mkdiamond.com