

# **Kawasaki**

— ENGINES —

---

## PARTS CATALOG

**4-STROKE AIR-COOLED GASOLINE ENGINE**

<b>PRODUCT CODE</b>
<b>FT730V-AS45</b>

# PARTS CATALOG INTRODUCTION

This parts catalog lists parts and sub-assemblies provided as service parts. When it becomes necessary to replace parts, always use KAWASAKI GENUINE PARTS which have passed strict inspection which guarantees quality and performance.

## 1. HOW TO ORDER PARTS

- 1) When ordering the parts, be sure to use the parts catalog corresponding to the product code. Check the product revision codes on the product and the catalog.

Product Code (example) : FA130D-AA00  
 Product Revision Code

- 2) Specify the part code (all digits) exactly as listed in this catalog on your parts order.
- 3) The parts not shown in the illustrations of this catalog are not sold separately; only the complete units or next higher assemblies illustrated are supplied as the service parts.

## 2. EXPLANATION OF PARTS CATALOG FORMAT

Ref. No.	Part No.	Description	Quantity
			c
14091	14091-2141	COVER	1
19073	19073-2241	INSULATOR	1
21169	21169-2077	TERMINAL	1
21171	21171-2267	COIL-ASSY-IGNITION	1
21194	21194-2355	FLYWHEEL-COMP	1
29011	29011-2390	WIRE-LEAD	1
92038	92038-2107	KEY	1
92070	92070-2119	PLUG-SPARK(BPRSES(NGK)	1
92154	92154-2014	BOLT,4X18	1
92154A	92154-2018	BOLT,6X20	2
92154B	92154-2017	BOLT,12X30	1
92200	92200-2183	WASHER,4.5X8X0.5	1
92210	92210-2126	NUT,M4	1

### 1) Product Code

This code describes the product code covered by this catalog. The product revision code, which is a part of the product code, is omitted.

### 2) Part Group Title

This title is the representative name for the group of parts illustrated on the page.

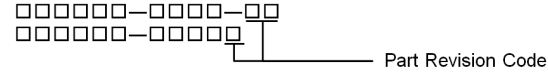
### 3) Reference Number

The reference numbers are shown on the illustration and the list as the link between them.

## 4) Part Number

This is the key of your parts ordering. Three kinds of part number are used in this catalog.

### a. Structure 1



### b. Structure 2



### c. Standard Hardware Number

(for bolts, nuts, washer, or the like)



## 5) Description and Additional Information

The part name, the location, the size, and the serial number as additional information, etc. are described here. Use them to find out and check the part required.

When a part number is changed without change of the product revision code and the changed parts are not interchangeable, the serial number of the product is noted as follows;

- ( - FA130 - 100001 ) Affected units are from beginning of the product of the product code up to and including this serial number.
- ( FA130 - 100002 - ) Affected units are from this serial number and above.
- ( FA130 - 100002 - FA130 - 110001 ) Affected units are in this serial number range.

## 6) Quantity

The figure shows quantity of the part required at the indicated position on the illustration and for the specified product revision code.

The asterisk (\*) on this column means the part can be used as the substitute on the product and is supplied until the stock is exhausted.

Note: Some small parts will be supplied by units.

Example: If six (6) bolts are ordered and the minimum quantity per unit is five (5), two (2), units of the bolt will be delivered.

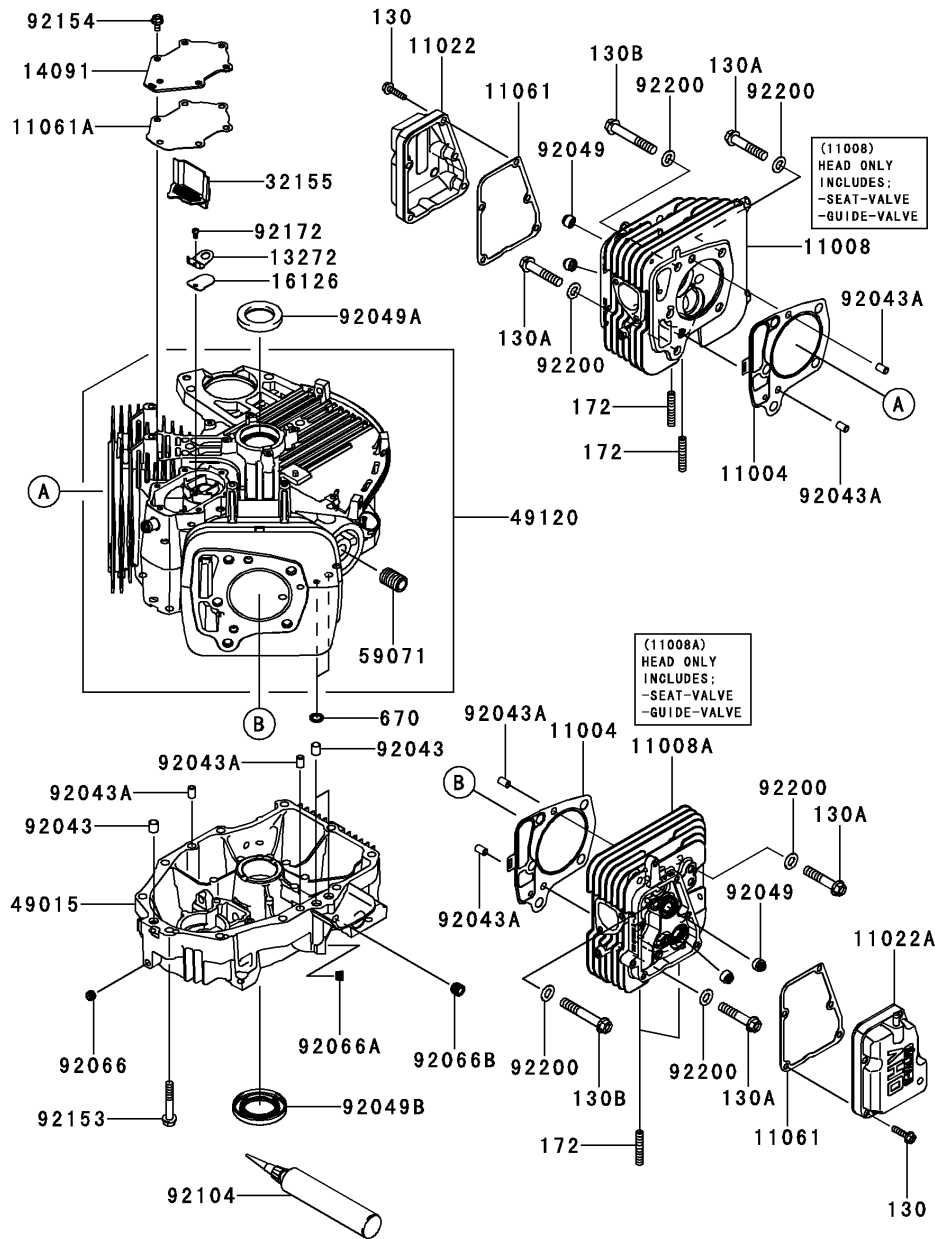
## 7) Product Revision Code

This Code indicates an important change which affects the service parts interchangeability.

## 3. ABBREVIATIONS

#	Number	FR	Front	RH	Right Hand
&	And	G	Gram	RPM	Revolutions Per Minute
(+)	Plus	HEX	Hexagonal	RR	Rear
(-)	Minus	ID =	Inside Diameter	STD	Standard
2ND	Second	IN	Inch	T	Teeth
3RD	Third	L =	Length	T =	Thickness
4TH	Fourth	LH	Left Hand	U/S	Under Size
A	Ampere	LWR	Lower	UPP	Upper
AR	As Required	MM	Millimeter	V	Volt
ASSY	Assembly	O/S	Over Size	W	Watt
CNT	Center	OD =	Outside Diameter		
COMP	Complete	REF	Reference		

E0110-A942E

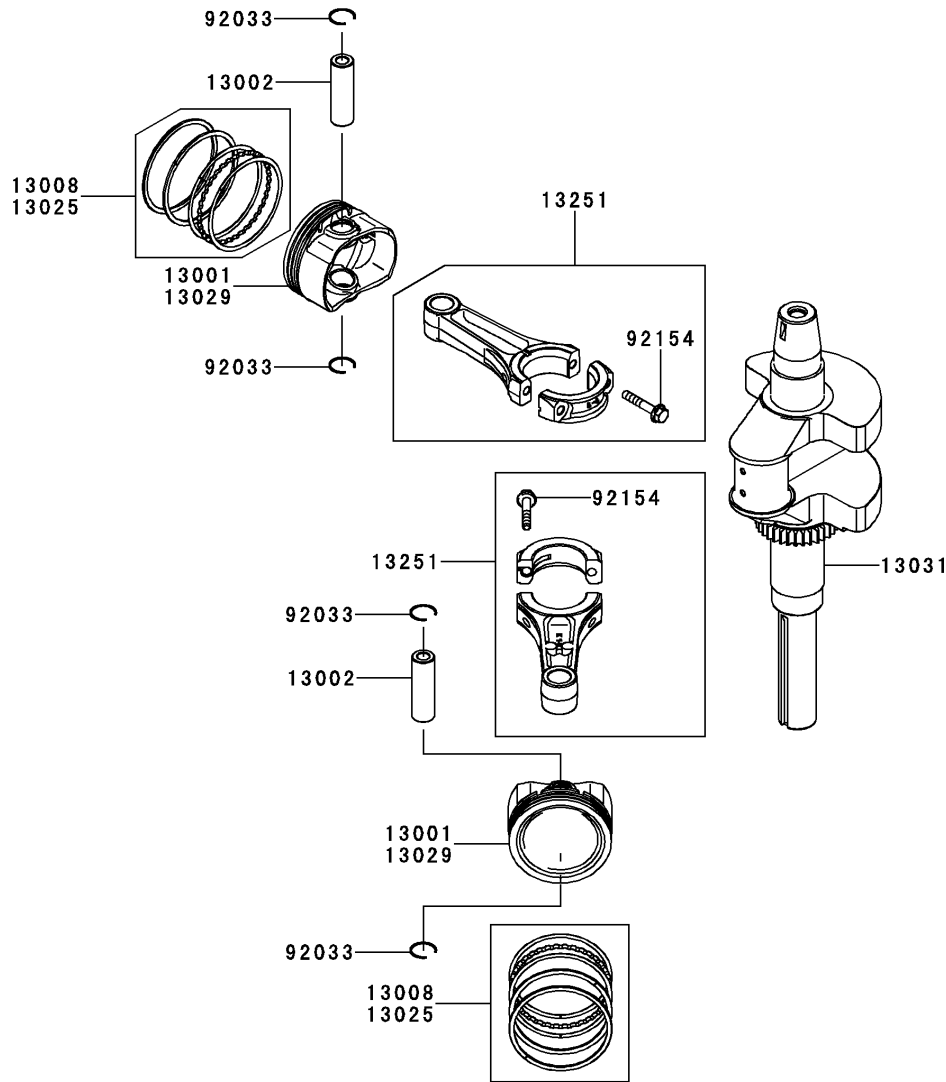


# 1. CYLINDER/CRANKCASE

Ref. No.	Part No.	Description	Quantity
		AS45	
11004	11004-0762	GASKET-HEAD	2
11008	11008-0839	HEAD-COMP-CYLINDER,#1	1
11008A	11008-0845	HEAD-COMP-CYLINDER,#2	1
11022	11022-0046	CASE-ROCKER,#1CYL	1
11022A	11022-0721	CASE-ROCKER,#2CYL	1
11061	11061-1285	GASKET,CASE-ROCKER	2
11061A	11061-7094	GASKET,BREATHER	1
13272	13272-1374	PLATE	1
14091	14091-7064	COVER,BREATHER	1
16126	16126-7020	VALVE,BREATHER	1
32155	32155-2214	PIPE,BREATHER	1
49015	49015-0029	COVER-CRANKCASE	1
49120	49120-0848	CRANKCASE-COMP	1
59071	59071-0733	JOINT	1
92043	92043-0858	PIN	3
92043A	92043-1263	PIN,6.2X8X14	6
92049	92049-7001	SEAL-OIL,RVC2 6X11X10.2	4
92049A	92049-7010	SEAL-OIL,SD 35X48X8 R HS	1
92049B	92049-7028	SEAL-OIL,38X62X8MTCLV	1
92066	92066-0880	PLUG,OIL	1
92066A	92066-0881	PLUG	1
92066B	92066-2223	PLUG	1
92104	92104-0007	GASKET-LIQUID,TB1217H	AR
92153	92153-7054	BOLT,8X50	10
92154	92154-2938	BOLT,6X12	6
92172	92172-0870	SCREW,4X8	1
92200	92200-1864	WASHER,10.5X19.5X1.6	10
130	130BA0625	BOLT-FLANGED,6X25	10
130A	130CA1050	BOLT-FLANGED,10X50	4
130B	130CA1065	BOLT-FLANGED,10X65	6
172	172BA0822	BOLT-STUD,8X22	4
670	670B2011	O RING,11MM	2

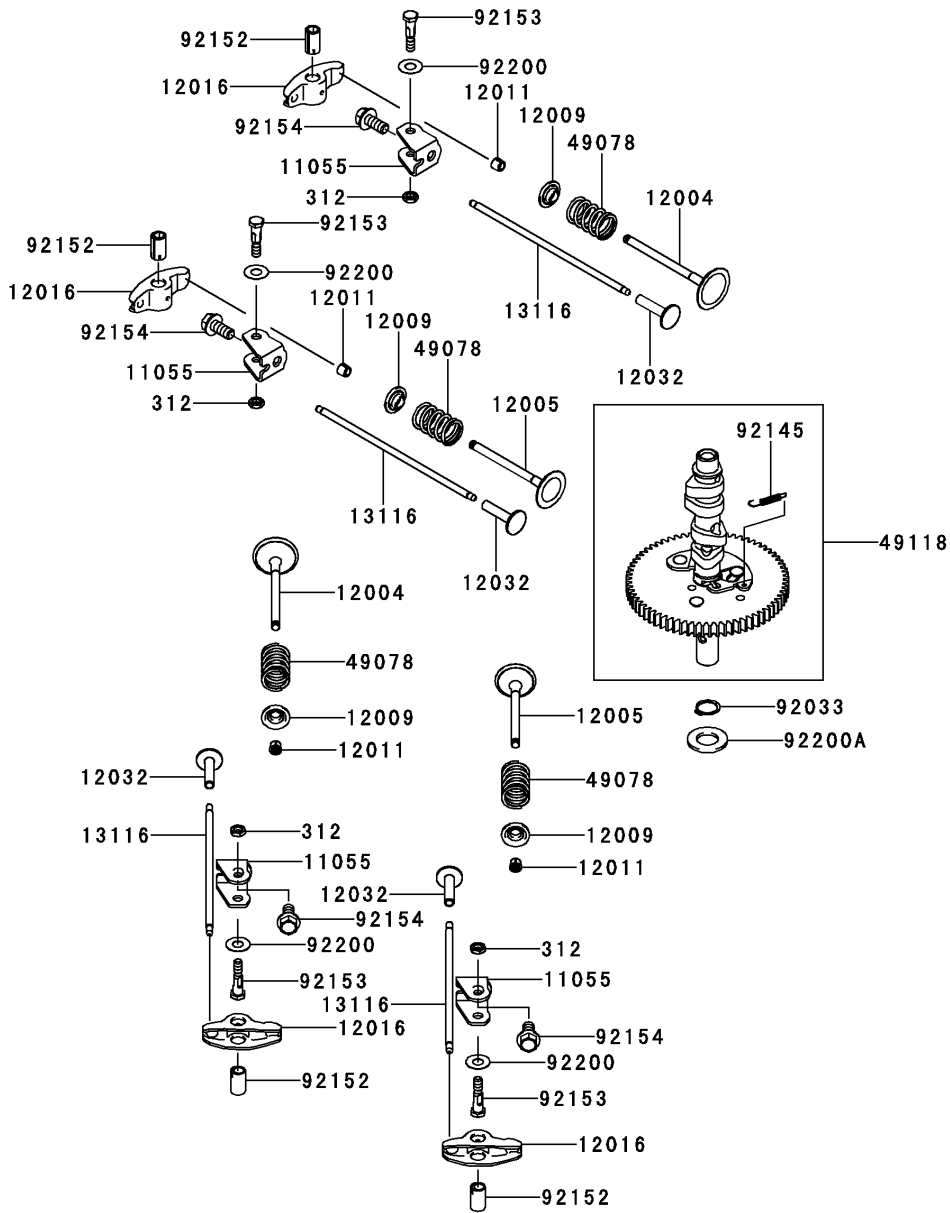
E0120-A547B

2. PISTON/CRANKSHAFT



Ref. No.	Part No.	Description	Quantity
			AS45
13001	13001-7027	PISTON-ENGINE	2
13002	13002-0704	PIN-PISTON	2
13008	13008-0569	RING-SET-PISTON	2
13025	13025-7009	RING-SET-PISTON L,0.5	AR
13029	13029-7010	PISTON-ENGINE L,0.5	AR
13031	13031-0834	CRANKSHAFT-COMP	1
13251	13251-0719	ROD-ASSY-CONNECTING	2
92033	92033-0790	RING-SNAP	4
92154	92154-2842	BOLT,6X35	4

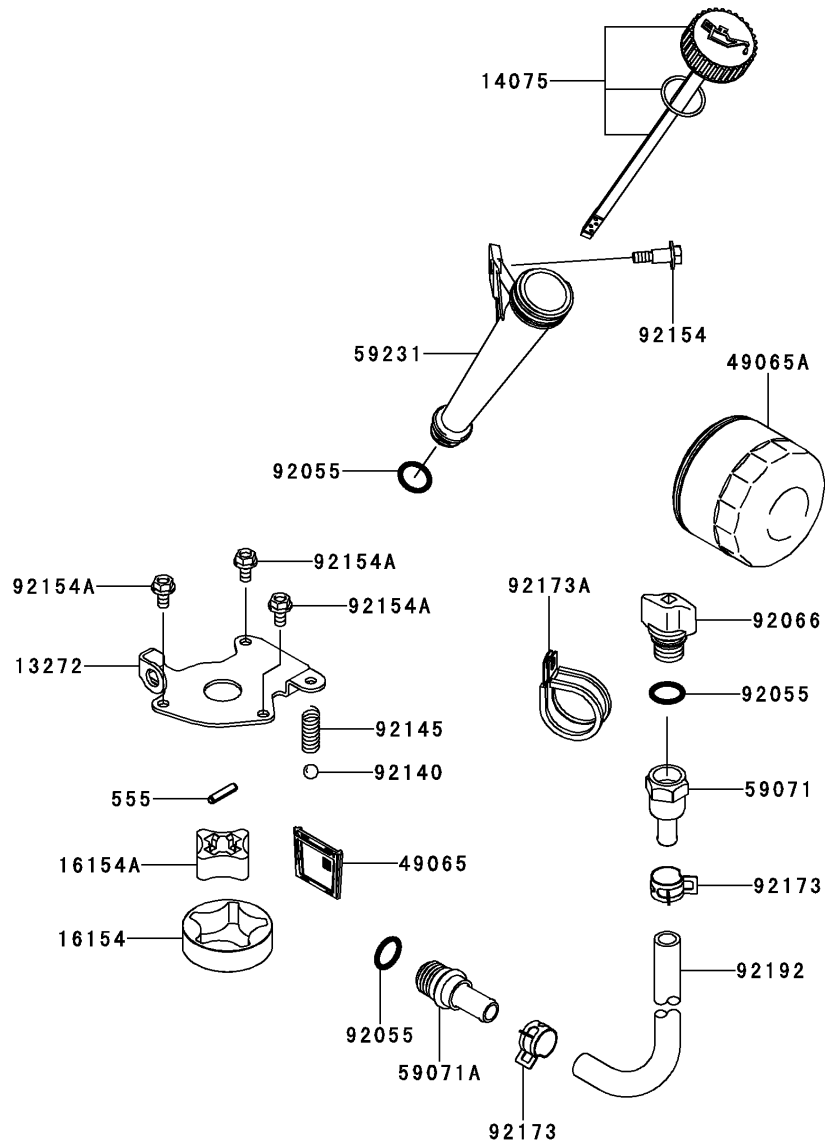
E0130-A251A



### 3. VALVE/CAMSHAFT

Ref. No.	Part No.	Description	Quantity
		AS45	
11055	11055-7009	BRACKET	4
12004	12004-0733	VALVE-INTAKE	2
12005	12005-0777	VALVE-EXHAUST	2
12009	12009-7001	RETAINER-VALVE SPRING	4
12011	12011-2056	COLLET	8
12016	12016-0040	ARM-ROCKER	4
12032	12032-7001	TAPPET	4
13116	13116-0725	ROD-PUSH	4
49078	49078-7002	SPRING-ENGINE VALVE,IN	4
49118	49118-7022	CAMSHAFT-COMP	1
92033	92033-0778	RING-SNAP	1
92145	92145-1653	SPRING	1
92152	92152-1689	COLLAR	4
92153	92153-7100	BOLT,6X29.5	4
92154	92154-1267	BOLT,8X18.2	4
92200	92200-2151	WASHER,8.1X18X0.5	4
92200A	92200-7048	WASHER,16.3X30X2.28	1
312	312AA0600	NUT-HEX,6MM	4

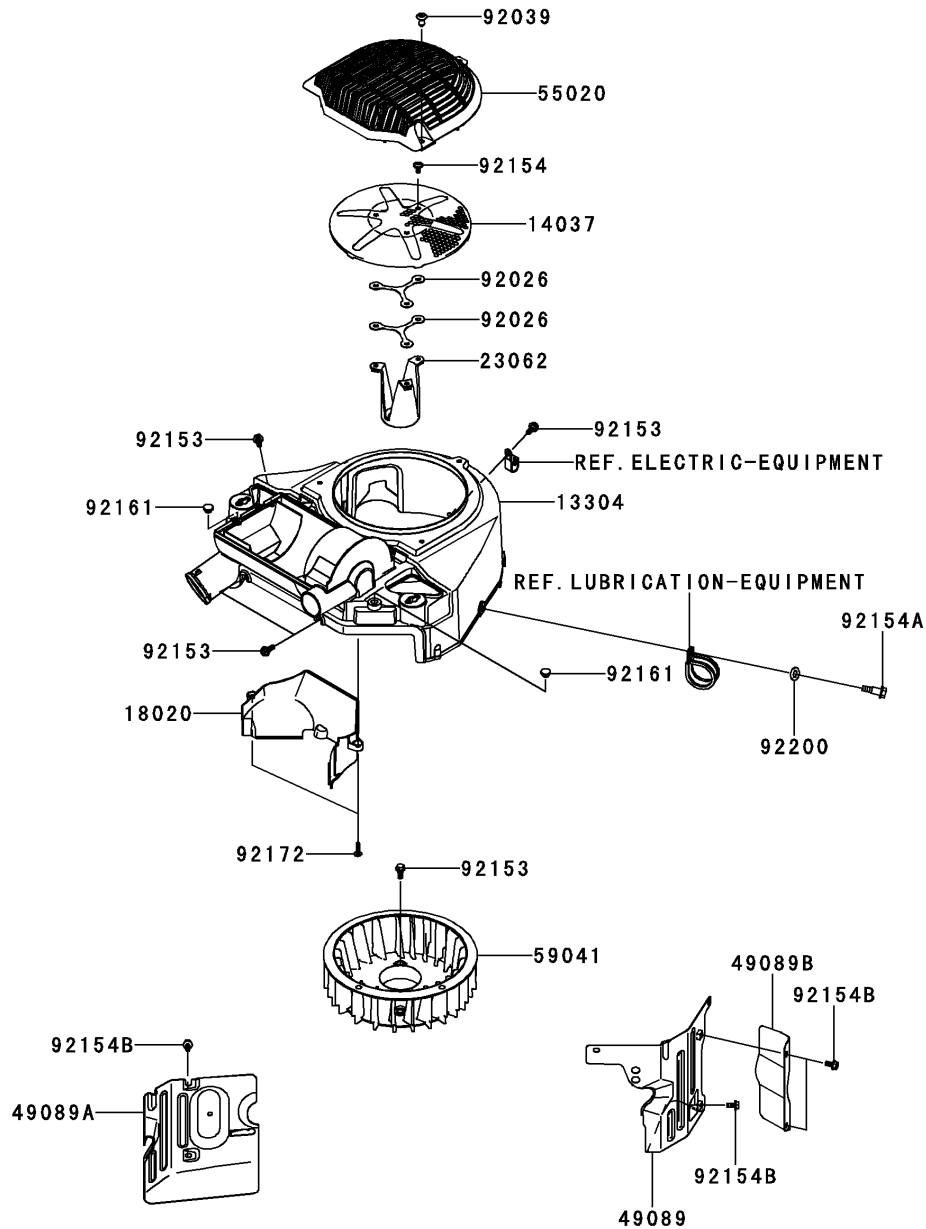
E0140-A644A



## 4. LUBRICATION-EQUIPMENT

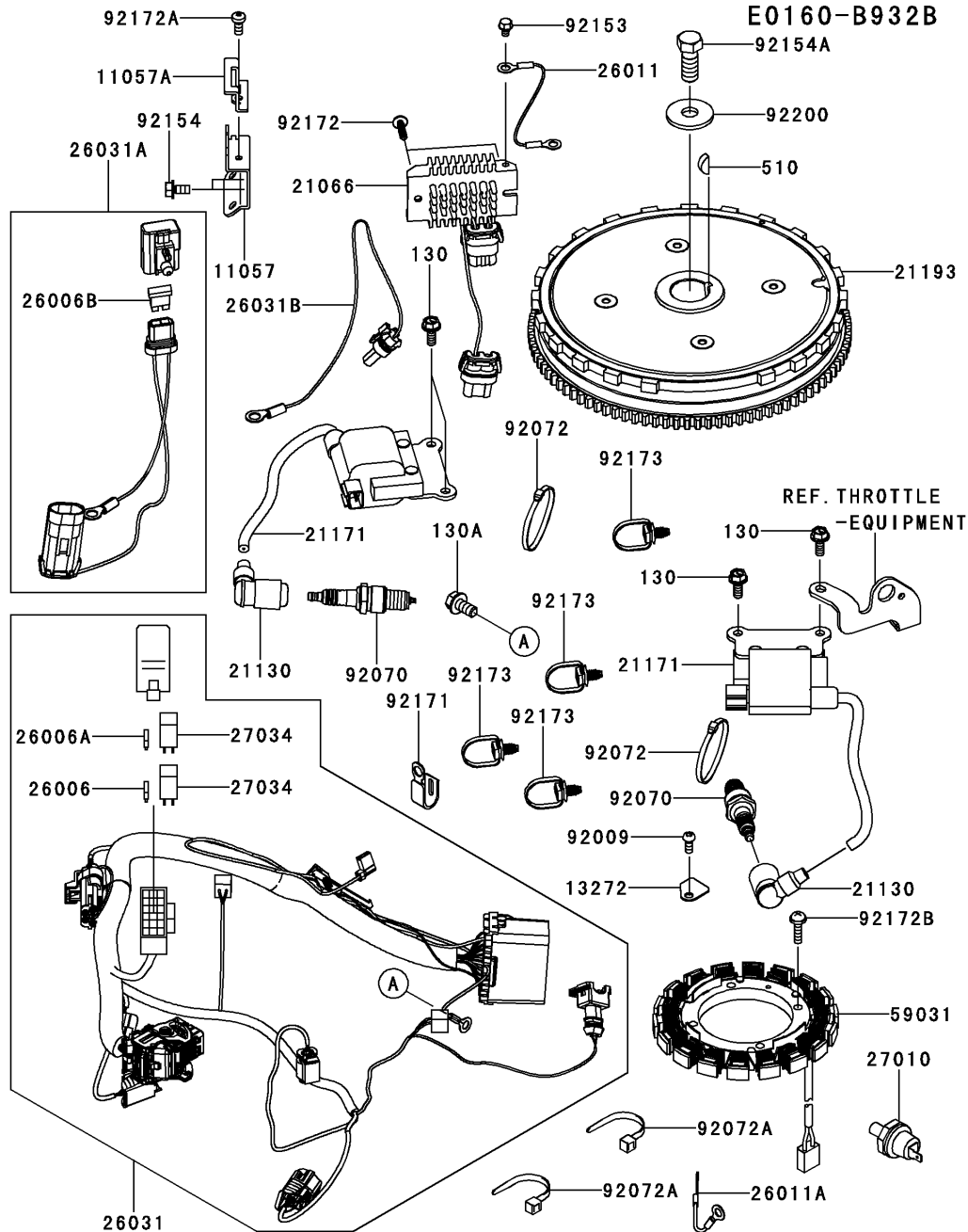
Ref. No.	Part No.	Description	Quantity
		AS45	
13272	13272-7011	PLATE,ROTOR	1
14075	14075-0707	CAP-ASSY	1
16154	16154-7010	ROTOR-PUMP,OUTER	1
16154A	16154-7011	ROTOR-PUMP,INNER	1
49065	49065-7006	FILTER-OIL	1
49065A	49065-7007	FILTER-OIL	1
59071	59071-0732	JOINT,PLUG SIDE	1
59071A	59071-0750	JOINT,ENGINE SIDE	1
59231	59231-0746	FILLER	1
92055	92055-0892	RING-O,15.8X2.4	3
92066	92066-0818	PLUG	1
92140	92140-7003	BALL,STEEL,13/32	1
92145	92145-1809	SPRING,OIL RELIEF	1
92154	92154-2823	BOLT,6MM	1
92154A	92154-2938	BOLT,6X12	3
92173	92173-1502	CLAMP	2
92173A	92173-2109	CLAMP	1
92192	92192-1430	TUBE,12.7X18.3X350	1
555	555A0420	PIN-SPRING,4X20	1

E0150-B407A



5. COOLING-EQUIPMENT

Ref. No.	Part No.	Description	Quantity
			AS45
13304	13304-0008	HOUSING-ASSY	1
14037	14037-7008-9H	SCREEN	1
18020	18020-0729	BAFFLE	1
23062	23062-7024	BRACKET-COMP	1
49089	49089-0928	SHROUD-ENGINE,#2	1
49089A	49089-0932	SHROUD-ENGINE,#1	1
49089B	49089-7076	SHROUD-ENGINE	1
55020	55020-2169	GUARD,FAN	1
59041	59041-0027	FAN	1
92026	92026-7007	SPACER	2
92039	92039-0751	RIVET,GUARD	3
92153	92153-7007	BOLT,FLANGED,6X16	8
92154	92154-2687	BOLT,6X12	3
92154A	92154-2823	BOLT,6MM	1
92154B	92154-2938	BOLT,6X12	4
92161	92161-0586	DAMPER	2
92172	92172-0896	SCREW,5X19.6	2
92200	92200-1864	WASHER,10.5X19.5X1.6	1



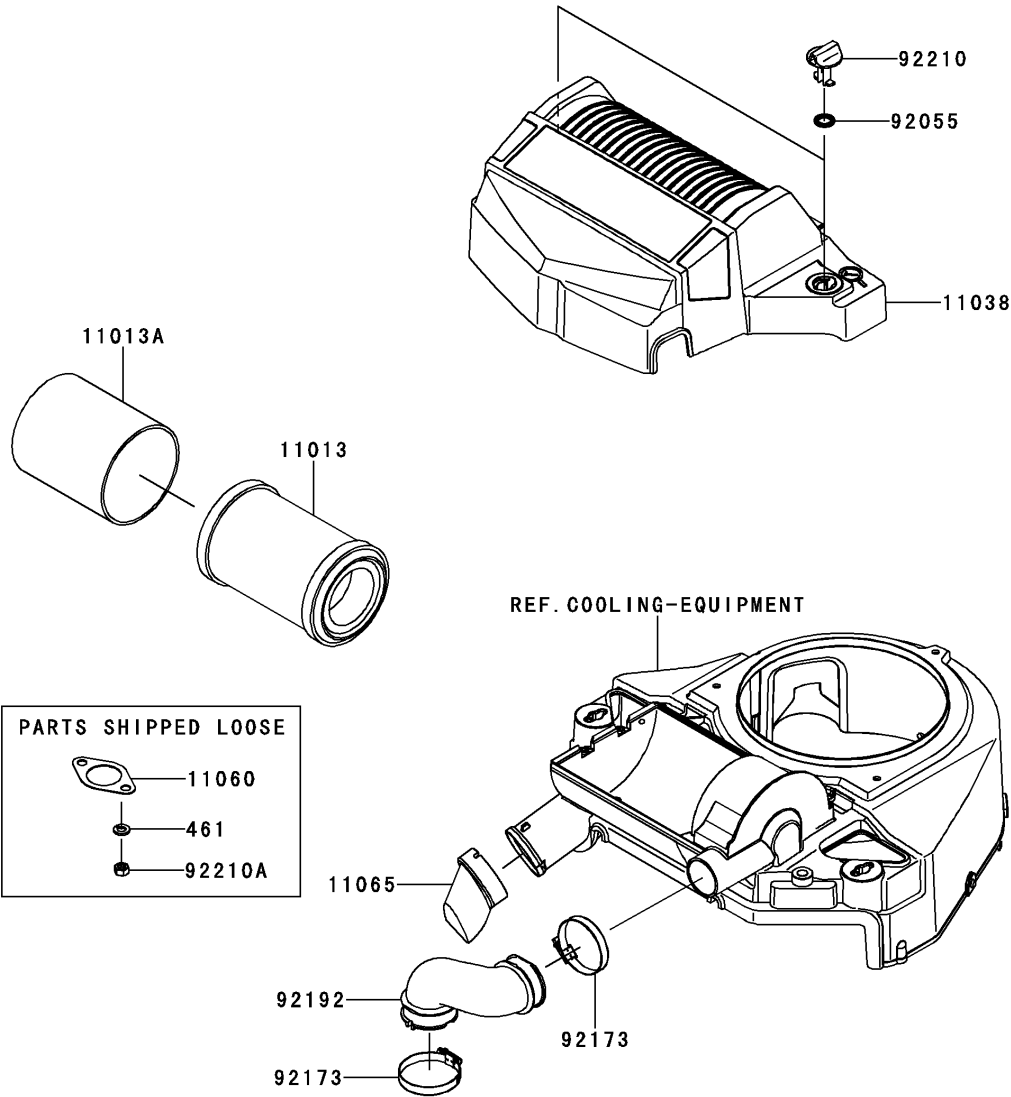
6. ELECTRIC-EQUIPMENT

Ref. No.	Part No.	Description	Quantity
		AS45	
11057	11057-1625	BRACKET,RELAY BOX	1
11057A	11057-1626	BRACKET,RELAY BOX	1
13272	13272-7012	PLATE	1
21066	21066-0747	REGULATOR-VOLTAGE	1
21130	21130-2060	CAP-SPARK PLUG	2
21171	21171-0725	COIL-ASSY-IGNITION	2
21193	21193-0037	FLYWHEEL-ASSY	1
26006	26006-0034	FUSE,10A	1
26006A	26006-0035	FUSE,2A	1
26006B	26006-0036	FUSE,40A	1
26011	26011-0931	WIRE-LEAD	1
26011A	26011-7025	WIRE-LEAD,L=95	1
26031	26031-2436	HARNESS	1
26031A	26031-2437	HARNESS	1
26031B	26031-2438	HARNESS	1
27010	27010-0830	SWITCH,OIL PRESSURE	1
27034	27034-0010	RELAY	2
59031	59031-0013	COIL-CHARGING	1
92009	92009-2308	SCREW	1
92070	92070-7004	PLUG-SPARK,BPR4ES(NGK),SOLID	2
92072	92072-0775	BAND	2
92072A	92072-7003	BAND	2
92153	92153-7029	BOLT	1
92154	92154-2938	BOLT,6X12	2
92154A	92154-7003	BOLT,12X30	1
92171	92171-7008	CLAMP	1
92172	92172-0896	SCREW,5X19.6	2
92172A	92172-1091	SCREW,5X12	1
92172B	92172-7018	SCREW,5X20	4
92173	92173-1515	CLAMP	4
92200	92200-7002	WASHER	1
130	130BA0616	BOLT-FLANGED,6X16	4
130A	130BA0816	BOLT-FLANGED,8X16	1
510	510A5100	KEY-WOODRUFF	1





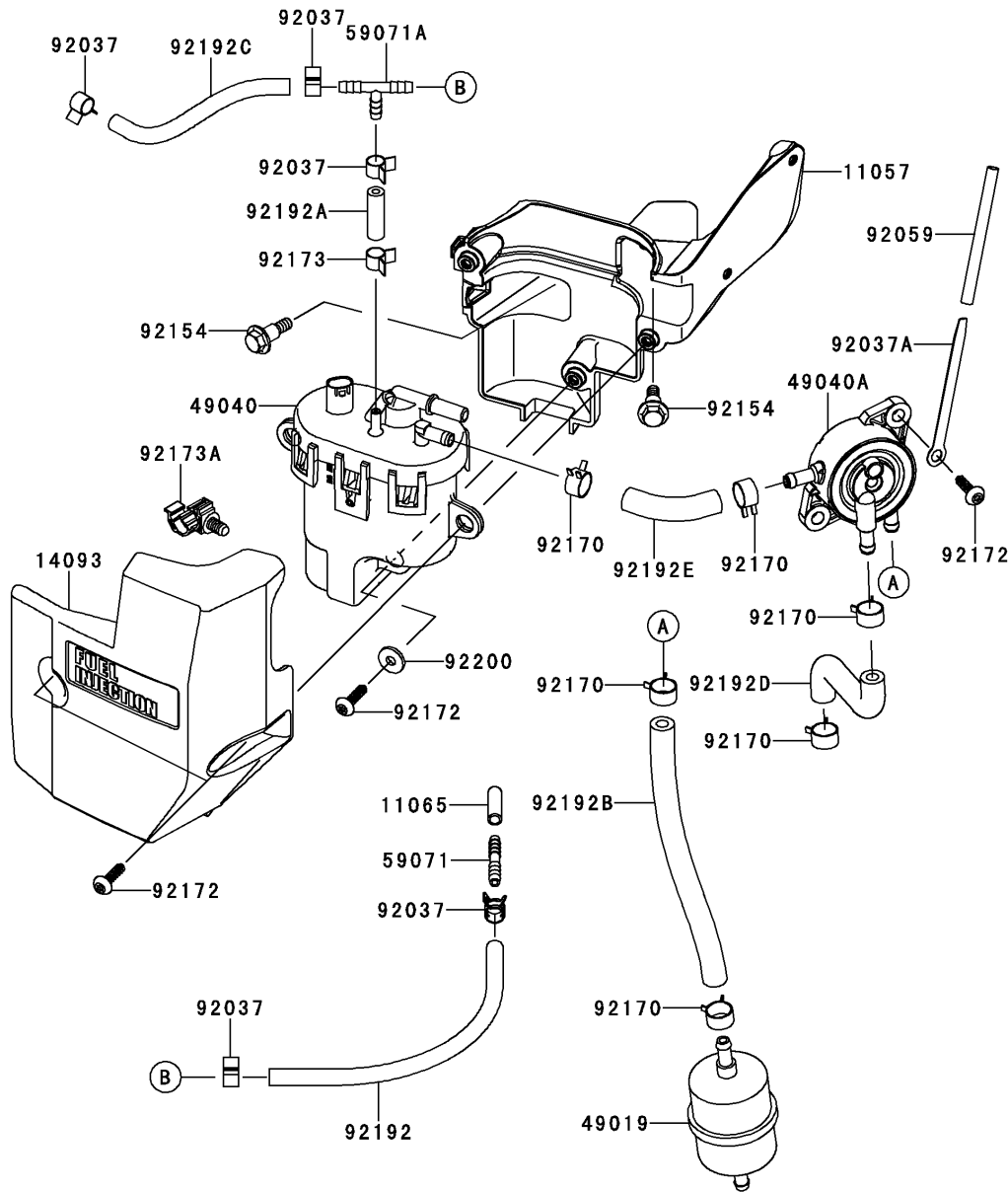
E0190-B725B



## 8. AIR-FILTER/MUFFLER

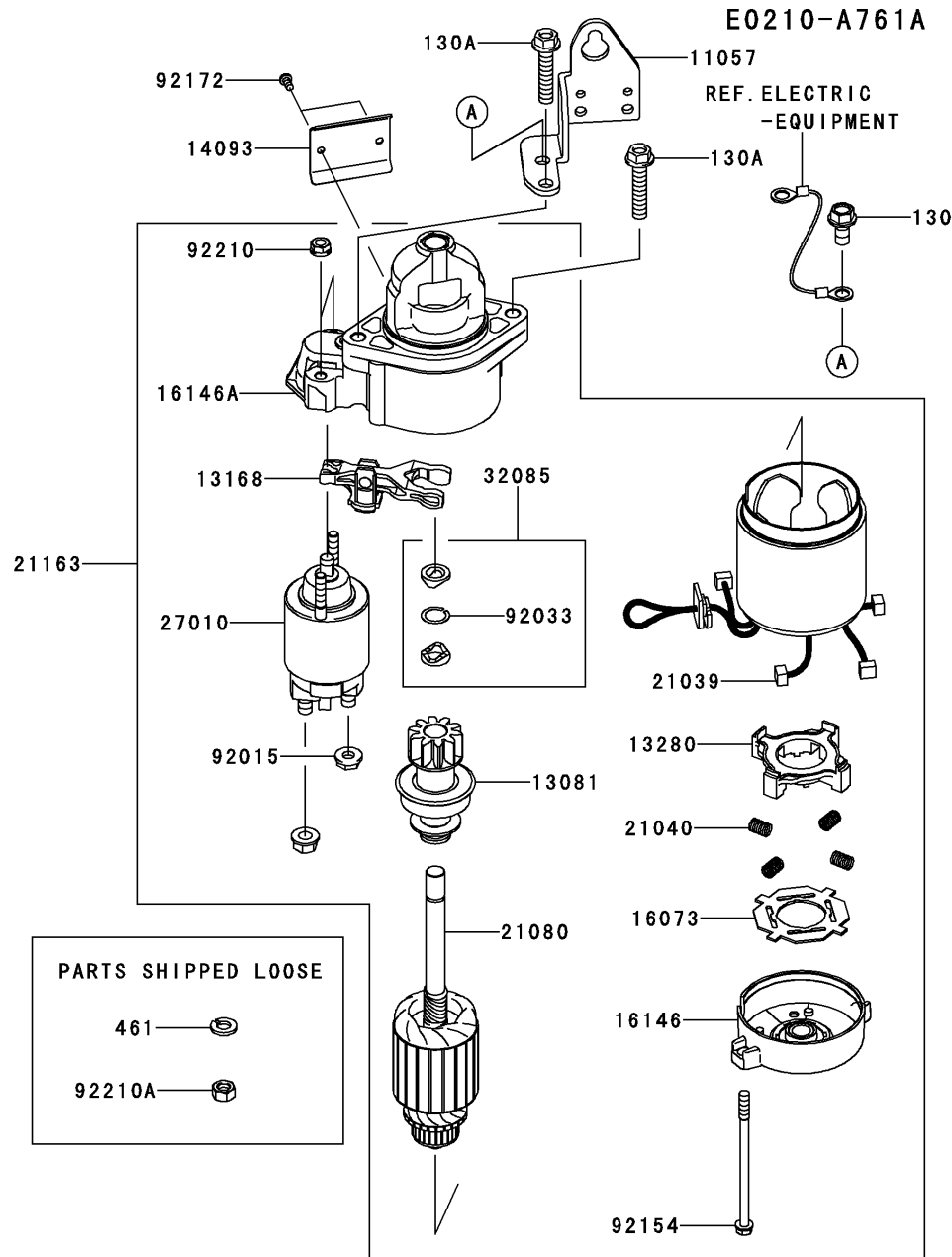
Ref. No.	Part No.	Description	Quantity
			AS45
11013	11013-0763	ELEMENT-AIR FILTER,BASE	1
11013A	11013-0764	ELEMENT-AIR FILTER,FOAM	1
11038	11038-0050	CASE-ASSY-AIR FILTER	1
11060	11060-7016	GASKET,MUFFLER	2
11065	11065-0981	CAP	1
92055	92055-7025	RING-O	2
92173	92173-7009	CLAMP	2
92192	92192-1768	TUBE,AC-TH	1
92210	92210-1730	NUT	2
92210A	92210-7027	NUT,M8	4
461	461DA0800	WASHER-SPRING,8MM	4

E0200-B043A



## 9. FUEL-TANK/FUEL-VALVE

Ref. No.	Part No.	Description	Quantity
		AS45	
11057	11057-0750	BRACKET,PUMP-FUEL	1
11065	11065-7037	CAP	1
14093	14093-1064	COVER,PUMP-FUEL	1
49019	49019-0031	FILTER-FUEL	1
49040	49040-0736	PUMP-FUEL	1
49040A	49040-0769	PUMP-FUEL	1
59071	59071-0050	JOINT	1
59071A	59071-0723	JOINT	1
92037	92037-1461	CLAMP,TUBE	5
92037A	92037-2006	CLAMP	1
92059	92059-2011	TUBE,5X6X75	1
92154	92154-2665	BOLT	2
92170	92170-2009	CLAMP	6
92172	92172-0896	SCREW,5X19.6	5
92173	92173-1495	CLAMP	1
92173A	92173-2326	CLAMP,TUBE-ASSY	1
92192	92192-1209	TUBE,4.76X8.74X200	1
92192A	92192-1372	TUBE,4.76X8.74X35	1
92192B	92192-1547	TUBE,6.35X12.7X140	1
92192C	92192-1771	TUBE,EVAP	1
92192D	92192-1772	TUBE,PULSE	1
92192E	92192-1773	TUBE,6.35X12.7X80	1
92200	92200-1850	WASHER,5.3X15X1.2	1



Ref. No.	Part No.	Description	Quantity
		AS45	
11057	11057-1624	BRACKET,FUSE	1
13081	13081-0651	CLUTCH-ASSY,STARTER-ELECTRIC	1
13168	13168-0847	LEVER,PINION DRIVE	1
13280	13280-0873	HOLDER,BRUSH	1
14093	14093-0456	COVER	1
16073	16073-0854	INSULATOR	1
16146	16146-0796	COVER-ASSY,COMMUTATOR END	1
16146A	16146-0801	COVER-ASSY,STARTER DRIVE	1
21039	21039-0011	BRUSH,STARTER-ELECTRIC	4
21040	21040-0005	SPRING-BRUSH	4
21080	21080-0011	ARMATURE,STARTER-ELECTRIC	1
21163	21163-0754	STARTER-ELECTRIC	1
27010	27010-0843	SWITCH,MAGNET	1
32085	32085-0797	STOPPER,PINION	1
92015	92015-2147	NUT	1
92033	92033-0777	RING-SNAP	1
92154	92154-2116	BOLT	2
92172	92172-0870	SCREW,4X8	2
92210	92210-1493	NUT	2
92210A	92210-7027	NUT,M8	1
130	130BA0816	BOLT-FLANGED,8X16	1
130A	130BA0840	BOLT-FLANGED,8X40	2
461	461DA0800	WASHER-SPRING,8MM	1

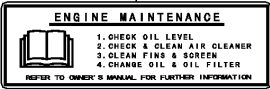
11. LABEL

Ref. No.	Part No.	Description	Quantity
			AS45
56030	56030-1415	LABEL	2
56033	56033-7001	LABEL-MANUAL	1
56071	56071-0216	LABEL-WARNING	1
56080	56080-0903	LABEL-BRAND,FT730V EFI	1

56030



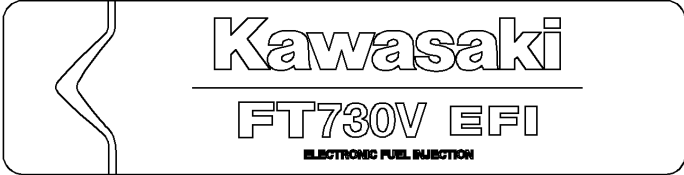
56033



56071



56080



Part No.	Fig No.	Part No.	Fig No.	Part No.	Fig No.	Part No.	Fig No.	Part No.	Fig No.	Part No.	Fig No.
11004-0762	1	13280-0873	10	49040-0769	9	92066-2223	1	92192-1769	7		
11008-0839	1	13304-0008	5	49065-7006	4	92070-7004	6	92192-1770	7		
11008-0845	1	14037-7008-9H	5	49065-7007	4	92072-0775	6	92192-1771	9		
11013-0763	8	14075-0707	4	49078-7002	3	92072-7003	6	92192-1772	9		
11013-0764	8	14091-7064	1	49089-0928	5	92104-0007	1	92192-1773	9		
11022-0046	1	14093-0456	10	49089-0932	5	92140-7003	4	92200-1759	7		
11022-0721	1	14093-1064	9	49089-7076	5	92145-1653	3	92200-1850	9		
11038-0050	8	16073-0854	10	49118-7022	3	92145-1809	4	92200-1864	1		
11055-7009	3	16126-7020	1	49120-0848	1	92152-1689	3	92200-1864	5		
11056-3900	7	16146-0796	10	51044-0883	7	92153-7007	5	92200-2151	3		
11057-0750	9	16146-0801	10	510A5100	6	92153-7029	6	92200-7002	6		
11057-1624	10	16154-7010	4	55020-2169	5	92153-7054	1	92200-7048	3		
11057-1625	6	16154-7011	4	555A0420	4	92153-7100	3	92210-1493	10		
11057-1626	6	16163-1179	7	56030-1415	11	92154-1267	3	92210-1730	8		
11060-7016	8	172BA0822	1	56033-7001	11	92154-2116	10	92210-7027	10		
11061-1285	1	18020-0729	5	56071-0216	11	92154-2665	9	92210-7027	8		
11061-7093	7	21039-0011	10	56080-0903	11	92154-2687	5				
11061-7094	1	21040-0005	10	59031-0013	6	92154-2823	4				
11065-0981	8	21066-0747	6	59041-0027	5	92154-2823	5				
11065-7037	9	21080-0011	10	59071-0050	9	92154-2842	2				
12004-0733	3	21130-2060	6	59071-0723	9	92154-2938	1				
12005-0777	3	21163-0754	10	59071-0732	4	92154-2938	4				
12009-7001	3	21171-0725	6	59071-0733	1	92154-2938	5				
12011-2056	3	21176-0771	7	59071-0750	4	92154-2938	6				
12016-0040	3	21176-0772	7	59076-0021	7	92154-2938	7				
12032-7001	3	21193-0037	6	59231-0746	4	92154-7003	6				
13001-7027	2	23062-1163	7	670B2011	1	92161-0586	5				
13002-0704	2	23062-7024	5	92009-2308	6	92161-1763	7				
13008-0569	2	26006-0034	6	92015-1367	7	92170-2009	9				
13025-7009	2	26006-0035	6	92015-2147	10	92171-7008	6				
13029-7010	2	26006-0036	6	92026-7007	5	92172-0870	1				
13031-0834	2	26011-0931	6	92033-0777	10	92172-0870	10				
13081-0651	10	26011-7025	6	92033-0778	3	92172-0896	5				
130BA0616	6	26031-2436	6	92033-0790	2	92172-0896	6				
130BA0616	7	26031-2437	6	92037-1461	9	92172-0896	9				
130BA0625	1	26031-2438	6	92037-2006	9	92172-1091	6				
130BA0630	7	27010-0830	6	92039-0751	5	92172-7018	6				
130BA0640	7	27010-0843	10	92043-0858	1	92173-1495	9				
130BA0816	10	27012-0831	7	92043-1263	1	92173-1502	4				
130BA0816	6	27034-0010	6	92049-7001	1	92173-1515	6				
130BA0816	7	312AA0600	3	92049-7010	1	92173-2109	4				
130BA0840	10	32085-0797	10	92049-7028	1	92173-2326	9				
130CA1050	1	32155-2214	1	92055-0892	4	92173-7003	7				
130CA1065	1	42036-0800	7	92055-0908	7	92173-7009	7				
13116-0725	3	461DA0800	10	92055-0909	7	92173-7009	8				
13168-0847	10	461DA0800	8	92055-7025	8	92192-1209	9				
13251-0719	2	49015-0029	1	92059-2011	9	92192-1372	9				
13272-1374	1	49019-0031	9	92066-0818	4	92192-1430	4				
13272-7011	4	49033-0045	7	92066-0880	1	92192-1547	9				
13272-7012	6	49040-0736	9	92066-0881	1	92192-1768	8				

**Kawasaki Heavy Industries, Ltd.**

Motorcycle & Engine Company

Part No. 99907-3256-01