

Specifications



Engine	Honda GX120
Power	3.5 HP
Max Cutting Depth	1 3/16"
Blade Size	6"
Depth Adjustment	Handle
Blade Included	Yes
Dust Port	OSHA Compliant
Wheel Material	Polyurethane
Weight	87 lbs
Engine Warranty	3 Year
Product Warranty	1 Year



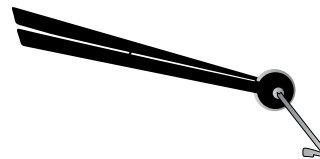
3.5 HP / 118 cc
Honda GX120 Engine



OSHA Approved Dust Port for
Dust & Silica Collection

FEATURES

- 3.5 HP Honda GX120 engine
- Maximum cutting depth of 1 3/16 inches
- Fits blade sizes up to 6 inches
- Excellent for concrete joints and random crack control
- Polyurethane wheels for safe operation on fresh concrete
- Comfortable grip handles for easy operation
- OSHA compliant vacuum port for dust collection
- 3-year engine warranty and 1-year product warranty
- EPA and CARB compliant



Saw Guide Ensures
Straight Cuts



1 Year Product Warranty
3 Year Engine Warranty