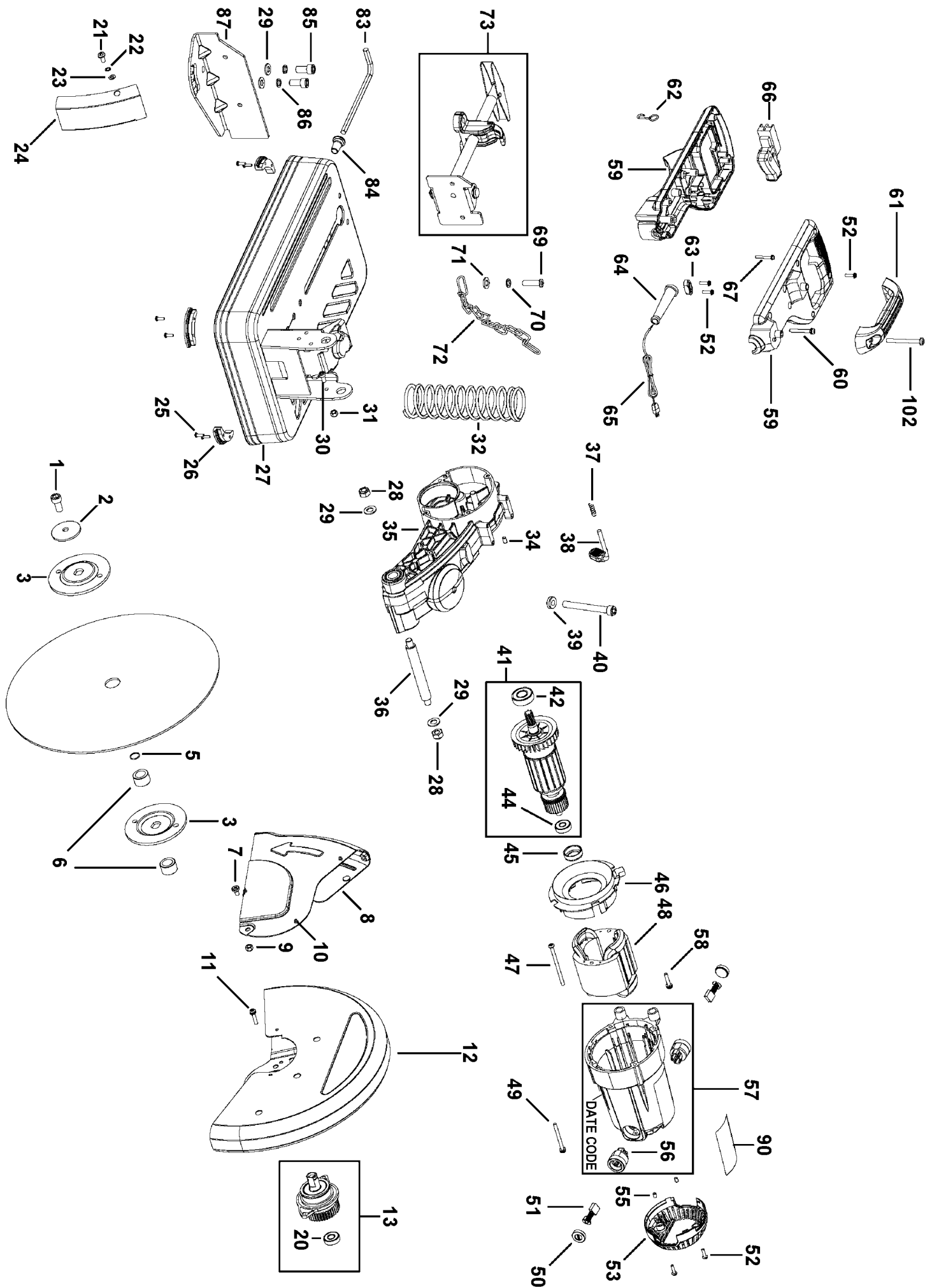




Click Here To View
Item at

www.GapPower.com

*Sales • Rentals
Parts & Service*



Parts List for D28710 Type 1

| Item Number | Part Number | Description | Qty Required |
|-------------|-------------|--------------------|--------------|
| 1 | N085909 | SCREW | 1 |
| 2 | N085898 | WASHER | 1 |
| 3 | N085893 | CLAMP WASHER | 2 |
| 5 | N085972 | O RING | 1 |
| 6 | N085971 | ADAPTER | 2 |
| 7 | N085903 | SCREW | 1 |
| 8 | N085884 | MOVING GUARD | 1 |
| 9 | N017088 | NUT | 1 |
| 10 | N085888 | RUBBER | 3 |
| 11 | N085889 | SCREW | 4 |
| 12 | N085878 | GUARD | 1 |
| 13 | N085924 | SPINDLE & GEAR | 1 |
| 20 | N085923 | BEARING | 1 |
| 21 | N085910 | SCREW | 1 |
| 22 | N016661 | LOCKWASHER | 1 |
| 23 | N016660 | FLAT WASHER | 1 |
| 24 | N085906 | SPARK GUARD | 1 |
| 25 | N085948 | SCREW | 4 |
| 26 | N085949 | RUBBER FOOT | 1 |
| 27 | N085953 | BASE | 1 |
| 28 | N085952 | NUT ELASTIC STOP | 2 |
| 29 | N085955 | WASHER | 4 |
| 30 | N085947 | SCREW | 1 |
| 31 | N085954 | NUT ELASTIC STOP | 1 |
| 32 | N085890 | COMPRESSION SPRING | 1 |
| 34 | N085880 | RUBBER PLUG | 1 |
| 35 | N085891 | ARM | 1 |

COPYRIGHT© 2005. All Rights Reserved.

Parts list, pricing, and availability subject to change. Please visit www.dewaltservicenet.com for current parts information.

Parts List for D28710 Type 1

| Item Number | Part Number | Description | Qty Required |
|-------------|-------------|--------------------|--------------|
| 36 | N085950 | PIN | 1 |
| 37 | N085881 | SPRING | 1 |
| 38 | N085879 | LOCK PIN | 1 |
| 39 | N085897 | NUT | 1 |
| 40 | N085896 | SCREW | 1 |
| 41 | N095936 | ARMATURE&BRGS. | 1 |
| 42 | N085930 | BALL BEARING | 1 |
| 44 | N085929 | BALL BEARING | 1 |
| 45 | N085933 | RUBBER BOOT | 1 |
| 46 | N085941 | FAN BAFFLE | 1 |
| 47 | N085939 | SCREW | 2 |
| 48 | N095262 | FIELD | 1 |
| 49 | N085936 | SCREW | 4 |
| 50 | N085940 | BRUSH CAP | 2 |
| 51 | N097997 | BRUSH PAIR | 1 |
| 52 | N017632 | SELF TAPPING SCREW | 1 |
| 53 | N085937 | END CAP | 1 |
| 55 | N085946 | SCREW | 2 |
| 56 | N085935 | BRUSH HOLDER | 2 |
| 57 | N097999 | FIELD CASE ASSY | 1 |
| 58 | N085945 | SCREW | 2 |
| 59 | N098000 | HANDLE COVER | 1 |
| 60 | N085956 | SCREW | 2 |
| 61 | N085960 | HANDLE,CARRYING | 1 |
| 62 | N085967 | ARM LOCK HOOK | 1 |
| 63 | N018151 | CORD CLAMP | 1 |
| 64 | N085957 | CORD PROTECTOR | 1 |

COPYRIGHT© 2005. All Rights Reserved.

Parts list, pricing, and availability subject to change. Please visit www.dewaltservicenet.com for current parts information.

Parts List for D28710 Type 1

| Item Number | Part Number | Description | Qty Required |
|-------------|-------------|------------------|--------------|
| 65 | N095258 | CORD SET | 1 |
| 66 | N085968 | SWITCH | 1 |
| 67 | N085966 | SCREW | 2 |
| 69 | N085905 | SCREW | 2 |
| 70 | N085899 | LOCK WASHER | 2 |
| 71 | N085895 | WASHER | 2 |
| 72 | N085907 | CHAIN | 1 |
| 73 | N085916 | WISE ASSEMBLY | 1 |
| 83 | N085914 | HEX WRENCH | 1 |
| 84 | N085919 | WRENCH HOLDER | 1 |
| 85 | 5140120-53 | SCREW AND WASHER | 2 |
| 86 | N085917 | LOCK WASHER | 2 |
| 87 | N085886 | FENCE | 1 |
| 90 | N096674 | NAMEPLATE | 1 |
| 102 | N085963 | SCREW | 2 |

COPYRIGHT© 2005. All Rights Reserved.

Parts list, pricing, and availability subject to change. Please visit www.dewaltservicen.com for current parts information.