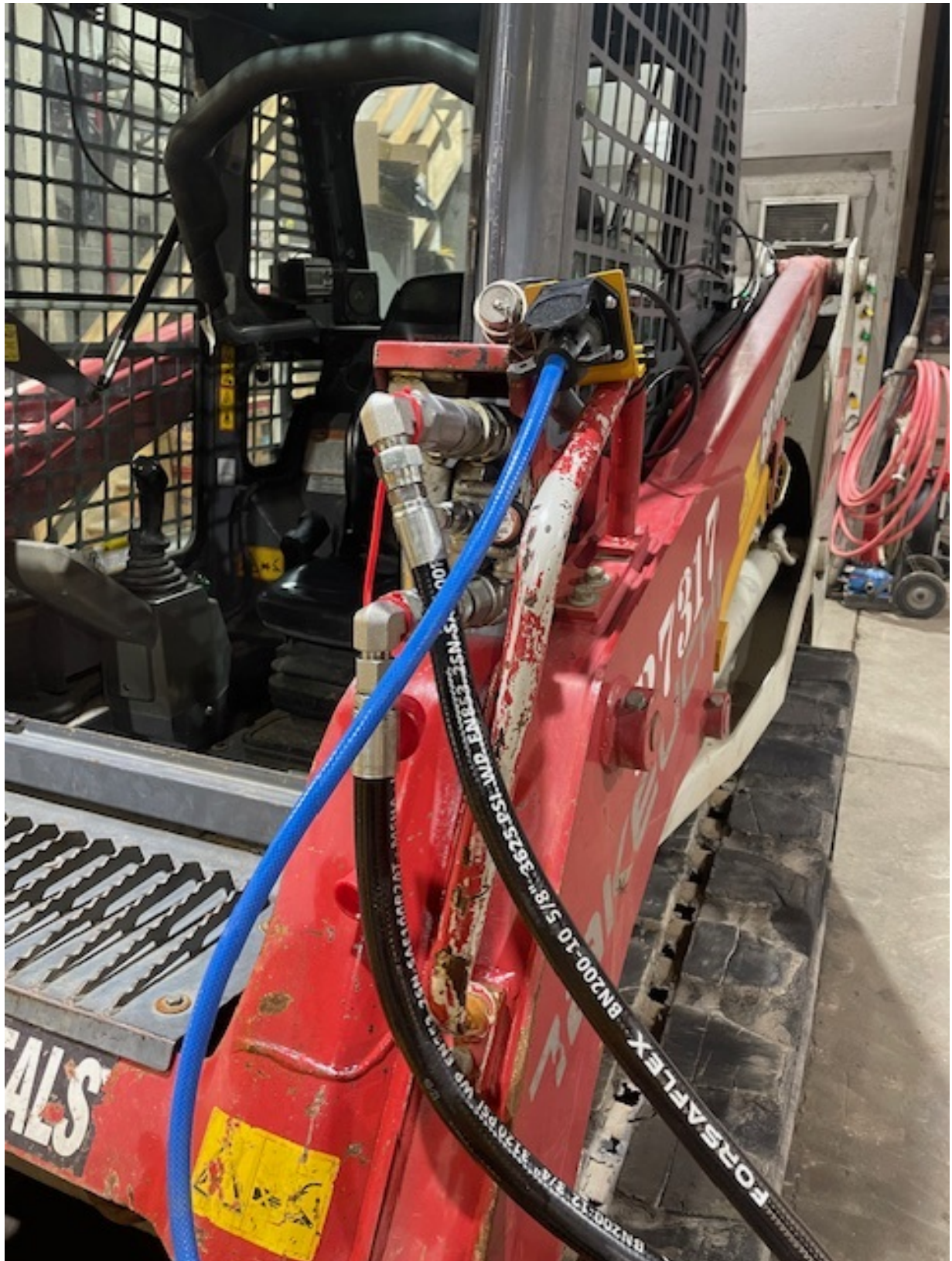


Dutchman Tree Spade 330i Attachment Instructions



There is a harness and controller in the cab needed to operate the spade. Whenever we send it out on our machine we need to install it properly. If it goes on a customers machine we should be advising him how to run the harness.



Zip tie the plug somewhere around the quick coupler. Run the wire down the boom arm zip tying it in place along the way. Once it reaches the back of the boom arm turn and route it along the cab and then into the window. Please take care to do this step well to prevent damage to the wiring! There are 11 wires in the loom!

The wire then goes into the cab and plugs into the pigtail on the spade's joystick.



The Joystick also has a second harness to be plugged into the cigarette lighter for 12v power.



Spade joystick has a bracket to attach the machines joystick



To operate engage the aux hydraulics using the detent to lock them on. The spade only works with the aux hydraulics running one direction and not the other like a breaker. Once the aux hydraulics are locked on the red buttons are used to operate the functions. There is also a trigger on the front side of the joystick. Depressing the trigger reverse's the direction of movement for whatever red function button you are pressing. The far-right red button operates the spade opening and closing. The other three buttons are for each of the three spades. Pushing them without the trigger puts the spades down, pushing them with the trigger depressed pulls them up. The buttons with an X on them are not used. They are for options our spade does not have.

