

SRX-150 EARLY ENTRY CONCRETE SAW

PARTS LIST

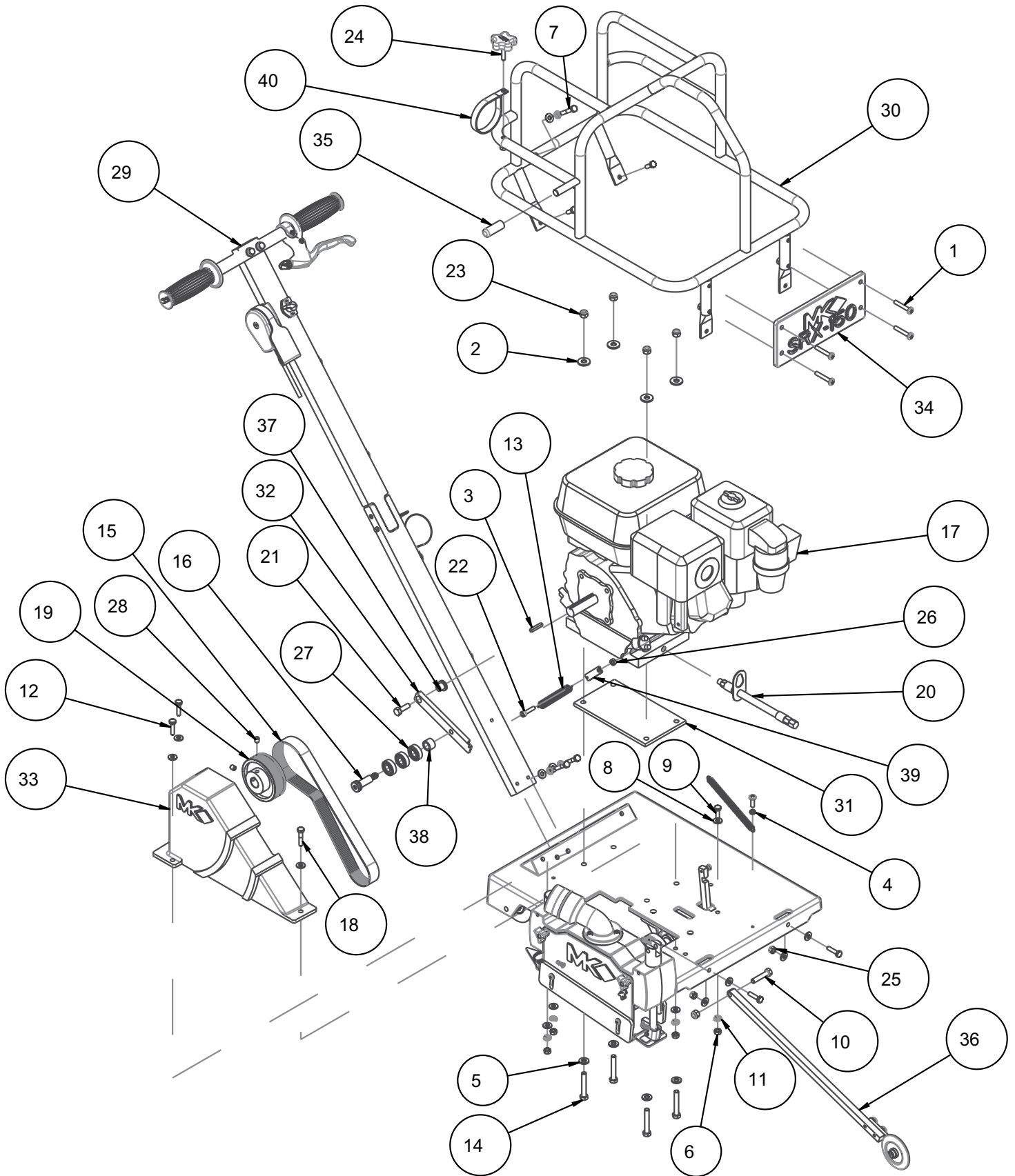
MODEL	P/N
SRX-150 Honda	172023-H
SRX-150 Kohler	172023-K



Revision 111	06.2019
Manual Part# 172023-OM	

Caution: Read all safety and operating instructions before using this equipment. This owner's manual **MUST** accompany the equipment at all times.

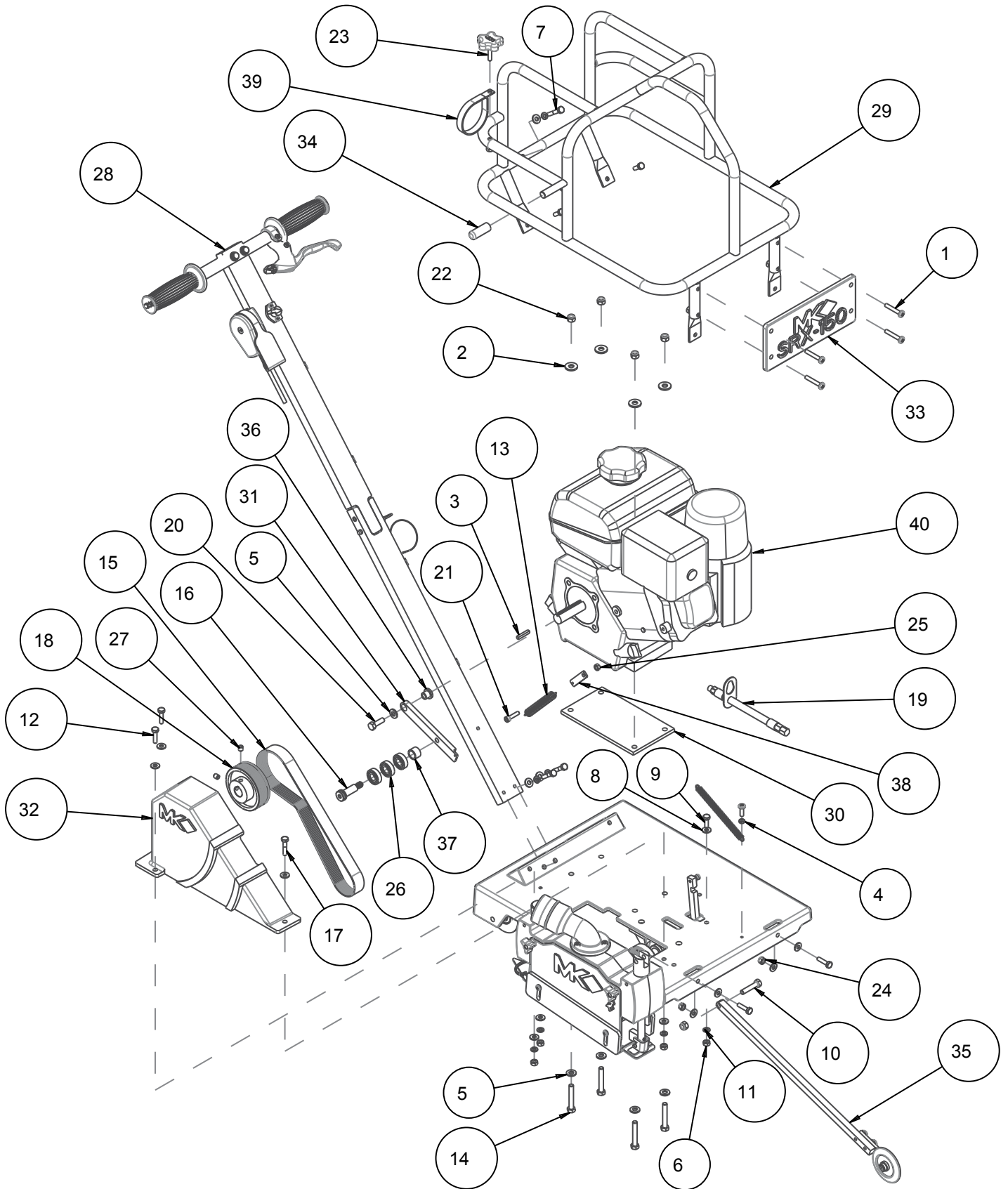
SRX-150, GX160 HONDA P/N 172023-H



SRX-150, GX160 HONDA P/N 172023-H

ITEM NO.	DESCRIPTION	PART #	QTY.
1	SCREW, RND HD, 1/4-20 X 1-1/2	100792	4
2	WASHER, 5/16 FLAT CUT	101352	4
3	KEY, 3/16 SQ X 1-1/8	150344	1
4	NUT, HEX, 10-24	151749	1
5	WASHER, FLAT, SAE, 5/16	151754	4
6	NUT, HEX, 1/4-20	151893	4
7	SCREW, HEX HEAD 1/4-20 X 1-1/2"	151914	1
8	WASHER, FLAT, SAE, 1/4	151915	14
9	SCREW, HEX HD, 1/4-20X3/4	152370	3
10	SCREW, 5/16-18 X 1-1/2 HEX HEAD MACHINE	152467	1
11	WASHER, LOCK, SPLIT, 1/4	152591	7
12	SCREW, HEX HD, TAP, 1/4-20 X 1	152676	4
13	SPRING, 9/16 X 2.5 EXTENSION	153807	1
14	SCREW, 5/16-18 X 2 HEX HEAD	155494	4
15	BELT, 10J280	156111	1
16	SCREW, SHOULDER, 1/2X1-1/4	156176	1
17	ENGINE, HONDA GX160 W/CYC	156282	1
18	SCREW, HEX HD, 1/4-20 X 1-1/4	157145	3
19	PULLEY, 10J28 X 5/8 BORE	157466	1
20	HOSE, OIL DRAIN, M10	157577-01	1
21	SCREW, HEX HD, TAP, 5/16-24 X 1	157646	1
22	SCREW, SOC HD, CAP, M6X25MM	158268	1
23	NUT, HEX, NYLK, 5/16-18	158289	5
24	KNOB, RUBBER, 1/4-20 X 1-1/4" LONG	159428-2	1
25	NUT, HEX, NYLK, 1/4-20	159857	4
26	NUT, HEX, M6 X 1.0	160209	1
27	BEARING, .500 X 1.125 X .3125 BALL	160477	3
28	SCREW, 5/16-18 X 3/8 SOCKET HEAD SET	165777	2
29	ASSY, HANDLEBAR (Page 38)	172069	1
30	CAGE, ENGINE	172074	1
31	PAD, VIBRATION	172075	1
32	ARM, IDLER	172077	1
33	GUARD, BELT, COMP	172079	1
34	NAMEPLATE, COMP	172099	1
35	BUMPER, POINTER, ARM	172128	1
36	ASSY, POINTER, ARM (Page 41)	172129	1
37	BUSHING, FLANGE, 5/16 X 1/2 X 1/2	172146	1
38	SPACER, 33/64 X 3/4 X 1/2	172147	1
39	LINK, IDLER	172149	1
40	CLAMP, CUSHION LOOP, 2-1/2	172187	1

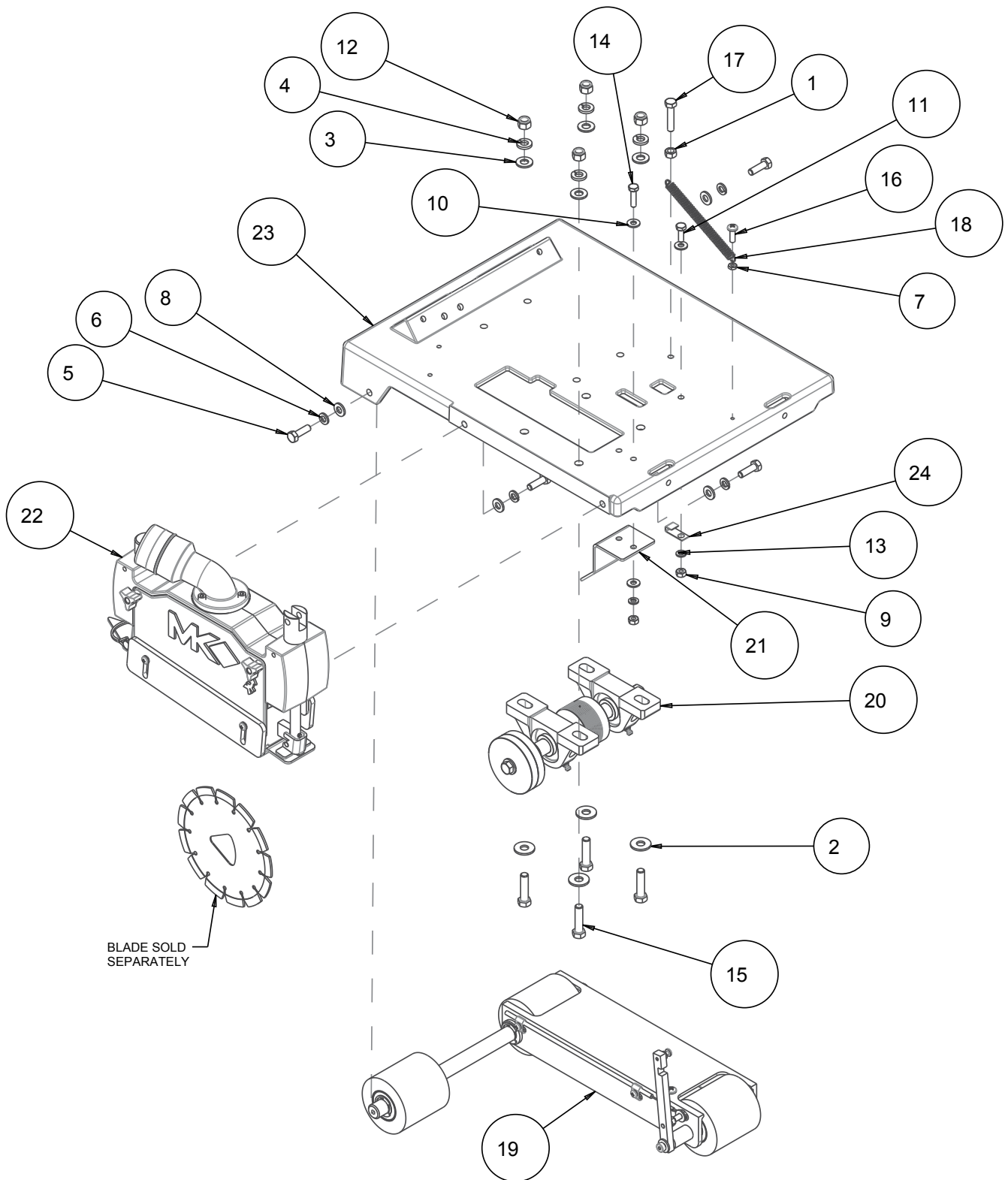
SRX-150, GX160 HONDA P/N 172023-K



SRX-150, GX160 HONDA P/N 172023-K

ITEM NO.	DESCRIPTION	PART #	QTY.
1	SCREW, RND HD, 1/4-20 X 1-1/2	100792	4
2	WASHER, 5/16 FLAT CUT	101352	4
3	KEY, 3/16 SQ X 1-1/8	150344	1
4	NUT, HEX, 10-24	151749	1
5	WASHER, FLAT, SAE, 5/16	151754	5
6	NUT, HEX, 1/4-20	151893	4
7	SCREW, HEX HEAD 1/4-20 X 1-1/2"	151914	1
8	WASHER, FLAT, SAE, 1/4	151915	14
9	SCREW, HEX HD, 1/4-20X3/4	152370	3
10	SCREW, 5/16-18 X 1-1/2 HEX HEAD MACHINE	152467	1
11	WASHER, LOCK, SPLIT, 1/4	152591	7
12	SCREW, HEX HD, TAP, 1/4-20 X 1	152676	4
13	SPRING, EXTENSION, 9/16OD X 2.5L X .072WIRE	153807	1
14	SCREW, 5/16-18 X 2 HEX HEAD	155494	4
15	BELT, 10J280	156111	1
16	SCREW, SHOULDER, 1/2X1-1/4	156176	1
17	SCREW, HEX HD, 1/4-20 X 1-1/4	157145	3
18	PULLEY, 10J28 X 5/8 BORE	157466	1
19	HOSE, OIL DRAIN, M10	157577-01	1
20	SCREW, HEX HD, TAP, 5/16-24 X 1	157646	1
21	SCREW, SOC HD, CAP, M6X25MM	158268	1
22	NUT, HEX, NYLK, 5/16-18	158289	5
23	KNOB, RUBBER, 1/4-20 X 1-1/4" LONG	159428-2	1
24	NUT, HEX, NYLK, 1/4-20	159857	4
25	NUT, HEX, M6 X 1.0	160209	1
26	BEARING, .500 X 1.125 X .3125 BALL	160477	3
27	SCREW, 5/16-18 X 3/8 SOCKET HEAD SET	165777	2
28	ASSY, HANDLEBAR (Page 38)	172069	1
29	CAGE, ENGINE	172074	1
30	PAD, VIBRATION	172075	1
31	ARM, IDLER	172077	1
32	GUARD, BELT, COMP	172079	1
33	NAMEPLATE, COMP	172099	1
34	BUMPER, POINTER, ARM	172128	1
35	ASSY, POINTER, ARM (Page 41)	172129	1
36	BUSHING, FLANGE, 5/16 X 1/2 X 1/2	172146	1
37	SPACER, 3/4OD X 7/16ID X 1/2H	172147	1
38	LINK, IDLER	172149	1
39	CLAMP, CUSHION LOOP, 2-1/2	172187	1
40	ENGINE, KOHLER, CH255, 5.5HP	172230	1

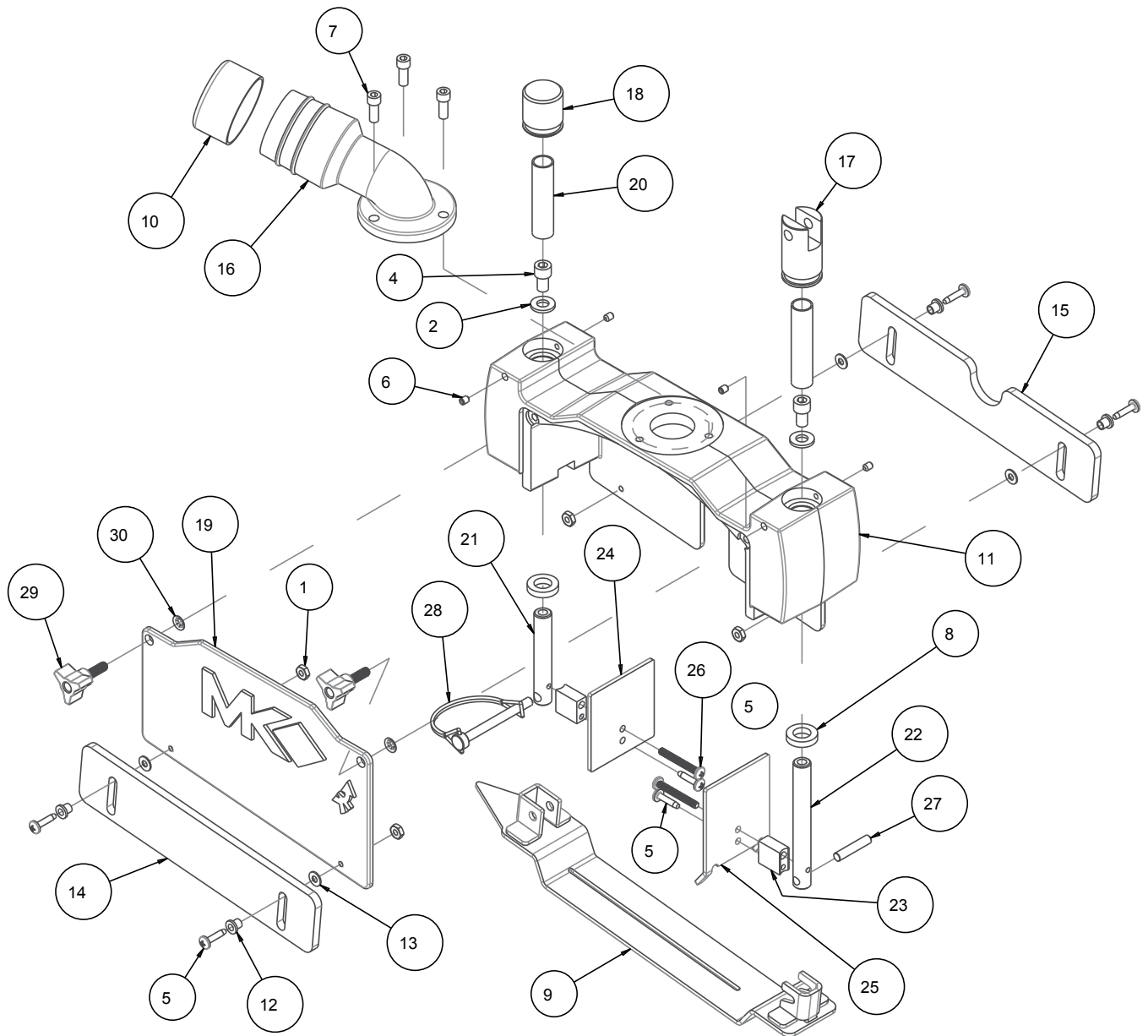
SRX-150, GX160 HONDA P/N 172023-H & SRX-150 CH255 KOHLER P/N 172023-K



SRX-150, GX160 HONDA P/N 172023-H & SRX-150 CH255 KOHLER P/N 172023-K

ITEM NO.	DESCRIPTION	PART #	QTY.
1	NUT, HEX, 5/16-18	101196	1
2	WASHER, FLAT, USS, 3/8	101360	4
3	WASHER, FLAT, SAE, 3/8	150923	4
4	WASHER, LOCK, SPLIT, 3/8	150925	4
5	SCREW, HEX HD, 5/16-18 X 1	151743	4
6	WASHER, LOCK, SPLIT, 5/16	151747	4
7	NUT, HEX, 10-24	151749	1
8	WASHER, FLAT, SAE, 5/16	151754	4
9	NUT, HEX, 1/4-20	151893	2
10	WASHER, FLAT, SAE, 1/4	151915	3
11	SCREW, HEX HD, 1/4-20X 3/4	152370	1
12	NUT, HEX, NYLK, 3/8-16	152505	4
13	WASHER, LOCK, SPLIT, 1/4	152591	2
14	SCREW, HEX HD, TAP, 1/4-20X1	152676	1
15	SCREW, 3/8-16 X 1-1/2 HEX HEAD	153528	4
16	SCREW, PAN HD, 1/4-20 X 3/4	157523	1
17	BOLT, 5/16-18 X 1-1/2 HEX HEAD TAP	162819	1
18	SPRING, EXT, 7/16OD X .048WD X 3.0L	167270	1
19	ASSY, TRUCK (<i>Page 36</i>)	172060	1
20	ASSY, BLADE SHAFT (<i>Page 40</i>)	172066	1
21	PLATE, PROTECTOR, BLADE SHAFT	172076	1
22	ASSY, BLADE GUARD (<i>Pages 34-35</i>)	172080	1
23	FRAME, COMP	172086	1
24	BRACKET, PROTECTOR, FRAME	172166	1

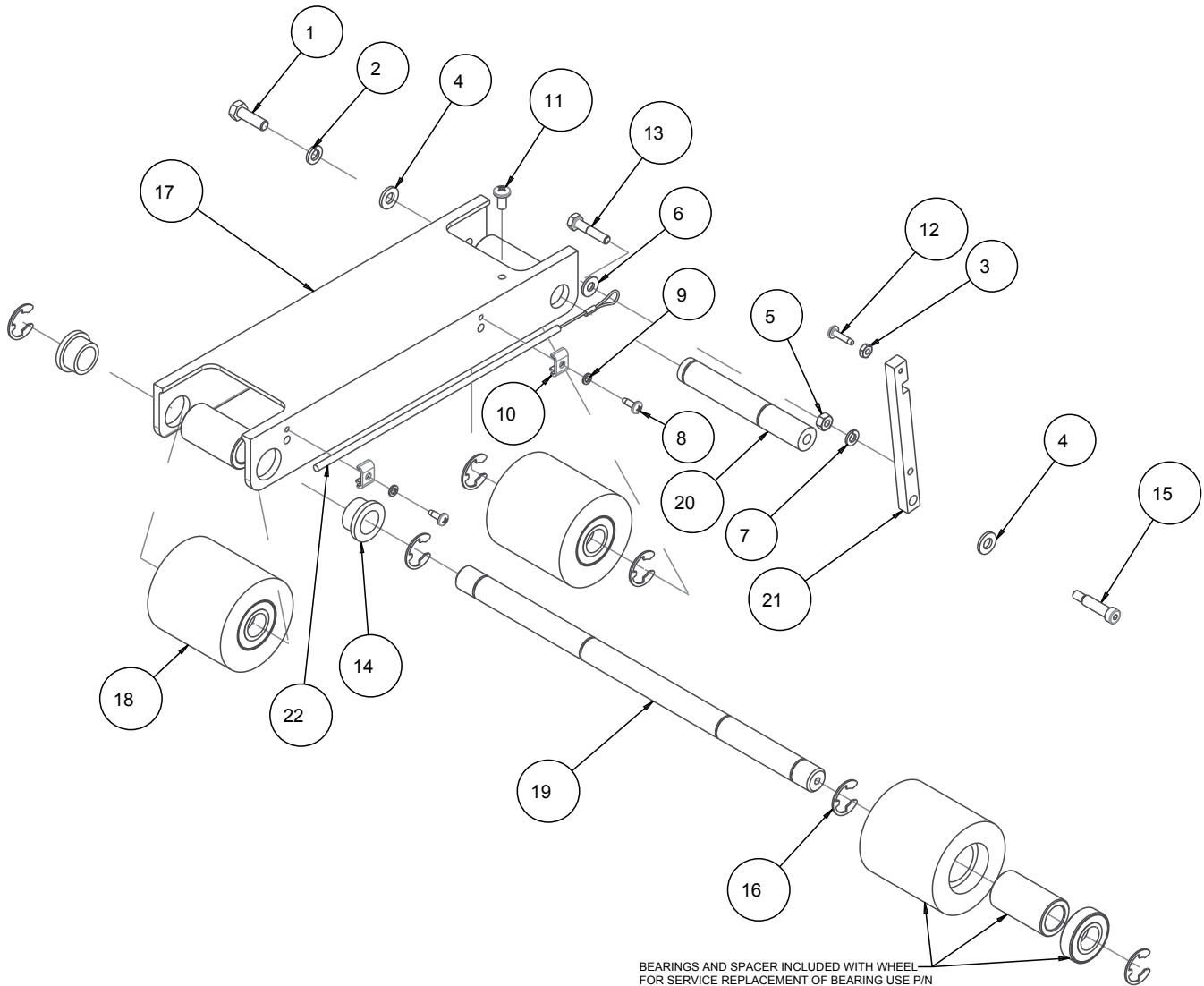
SRX-150, ASSY. BLADE GUARD P/N 172080



SRX-150, ASSY. BLADE GUARD P/N 172080

ITEM NO.	DESCRIPTION	PART #	QTY.
1	NUT, HEX, 10-24	151749	4
2	WASHER, FLAT, SAE, 5/16	151754	2
3	LABEL, CAUTION, GUARDS IN PLACE	155587	1
4	SCREW, SOC HD, CAP, 5/16 -18 X 1/2	156139	2
5	SCREW, PAN HD PHIL MS 10-24 X 3/4	156641	6
6	SCREW, SOCKET HEAD SET 10-24 X 1/4	157522	4
7	SCREW, 1/4-20 X 5/8 SOCKET HEAD CAP	161269	3
8	SEAL, OIL, 1/2 X 7/8 X 3/16	161270	2
9	PLATE, SKID, 6-8" BLADE SS	171286	1
10	CAP, 2' TUBING, VINYL	171362	1
11	GUARD, BLADE COMP	172088	1
12	WASHER, FLANGE, PLAS, #10	172093	4
13	WASHER, FLAT, PLAS, #10	172094	4
14	GUARD, LOWER SLIDING, FRONT	172096-1	1
15	GUARD, LOWER, SLIDING, BACK	172096-2	1
16	FITTING, VACUUM, COMP	172101	1
17	CAP, FRONT PLUNGER	172132	1
18	CAP, REAR PLUNGER	172133	1
19	COVER, BLADE GUARD, COMP	172134	1
20	SPRING, COMPRESSION, 0/6OD X 3.5L	172136	2
21	ROD, PLUNGER, REAR	172138	1
22	ROD, PLUNGER, FRONT	172139	1
23	SPACER, PLUNGER	172140	2
24	PLATE, REAR PLUNGER	172141	1
25	PLATE, FRONT PLUNGER	172142	1
26	SCREW, FLAT HD, #10-24 X 1-1/2	172143	2
27	PIN, DOWEL, STEEL	172144	1
28	PIN, WIRE LOCK, 1/4 X 1-3/8	172145	1
29	KNOB, 3 PRONG, 1/4-20 X 3/4	172183	2
30	NUT, PUSH, 3/16 SHAFT	172369	2

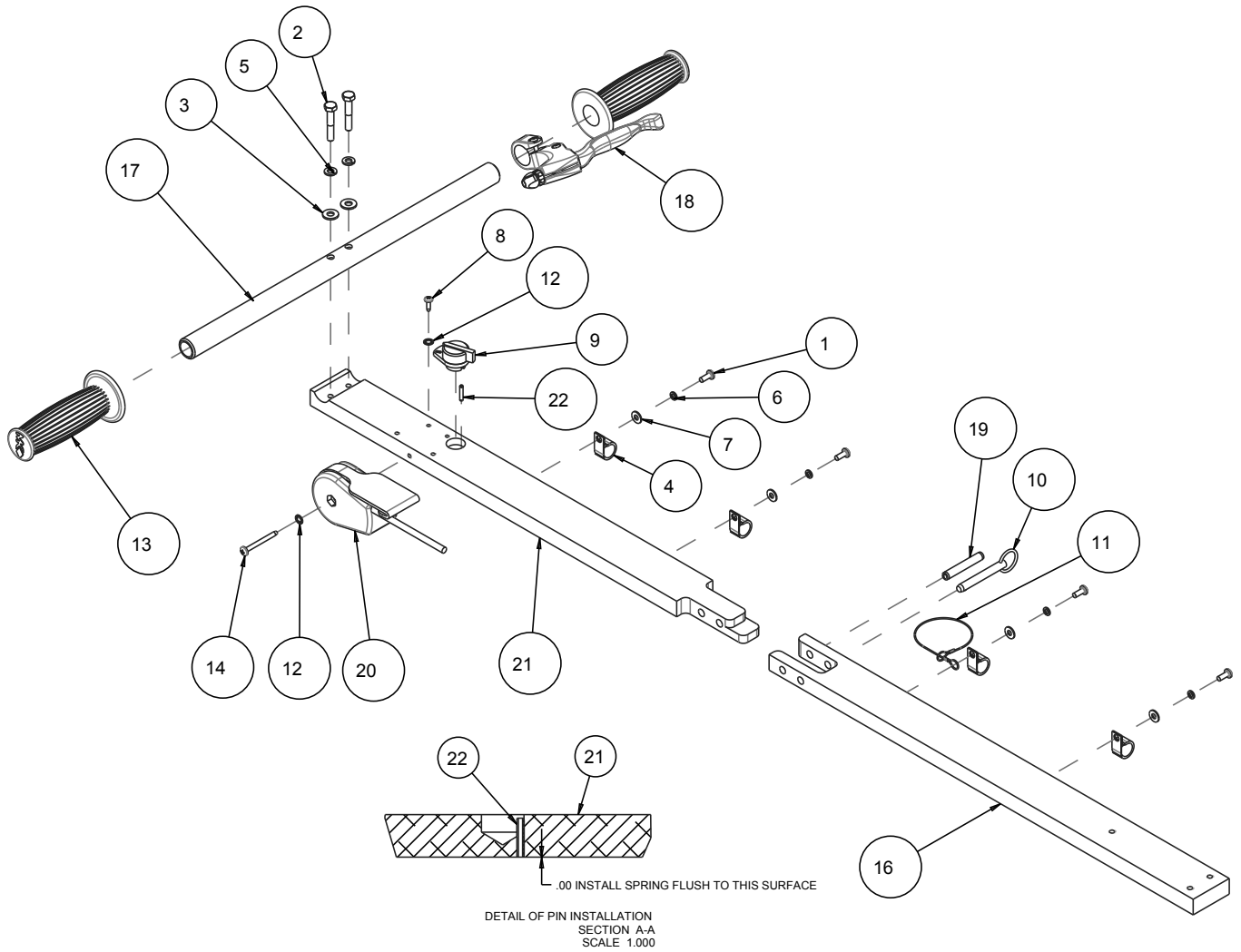
SRX-150, ASSY. TRUCK P/N 172060



SRX-150, ASSY. TRUCK P/N 172060

ITEM NO.	DESCRIPTION	PART #	QTY.
1	SCREW, HEX HD, 5/16 - 18 X 1	151743	1
2	WASHER, LOCK, SPLIT, 5/16	151747	1
3	NUT, HEX, 10-24	151749	1
4	WASHER, FLAT, SAE, 5/16	151754	2
5	NUT, HEX, 1/4 -20	151893	1
6	WASHER, LOCK, SAE, 1/4	151915	1
7	WASHER, LOCK, SPLIT, 1/4	152591	1
8	SCREW, PHILP SELF TAP 10-24 X 5/8"	153681	2
9	WASHER, #10 SPLIT LOCK	153684	2
10	CLAMP, CABLE	154383	2
11	SCREW, PAN HD, CAP, 1/4-20 X 1/2	155452	1
12	SCREW, PAN HD PHIL MS 10-24 X 3/4	156641	1
13	SCREW, HEX HD, 1/4-20 X 1-1/4	157145	1
14	BUSHING, FLANGE, PLAS, 3/4 X 1 X 5/8	159207	2
15	SCREW, SHOULDER, 5/16 X 1	160045	1
16	RING, .75 E-STYLE RETAINING	161163	6
17	TRUCK	172061	1
18	WHEEL, 3X3, URETHANE	172062	3
19	AXLE, REAR, 3/4"	172063	1
20	AXLE, FRONT, 3/4"	172064	1
21	LEVER, RAISE LOCK	172065	1
22	CABLE, LOCK RELEASE, COMP	172167	1

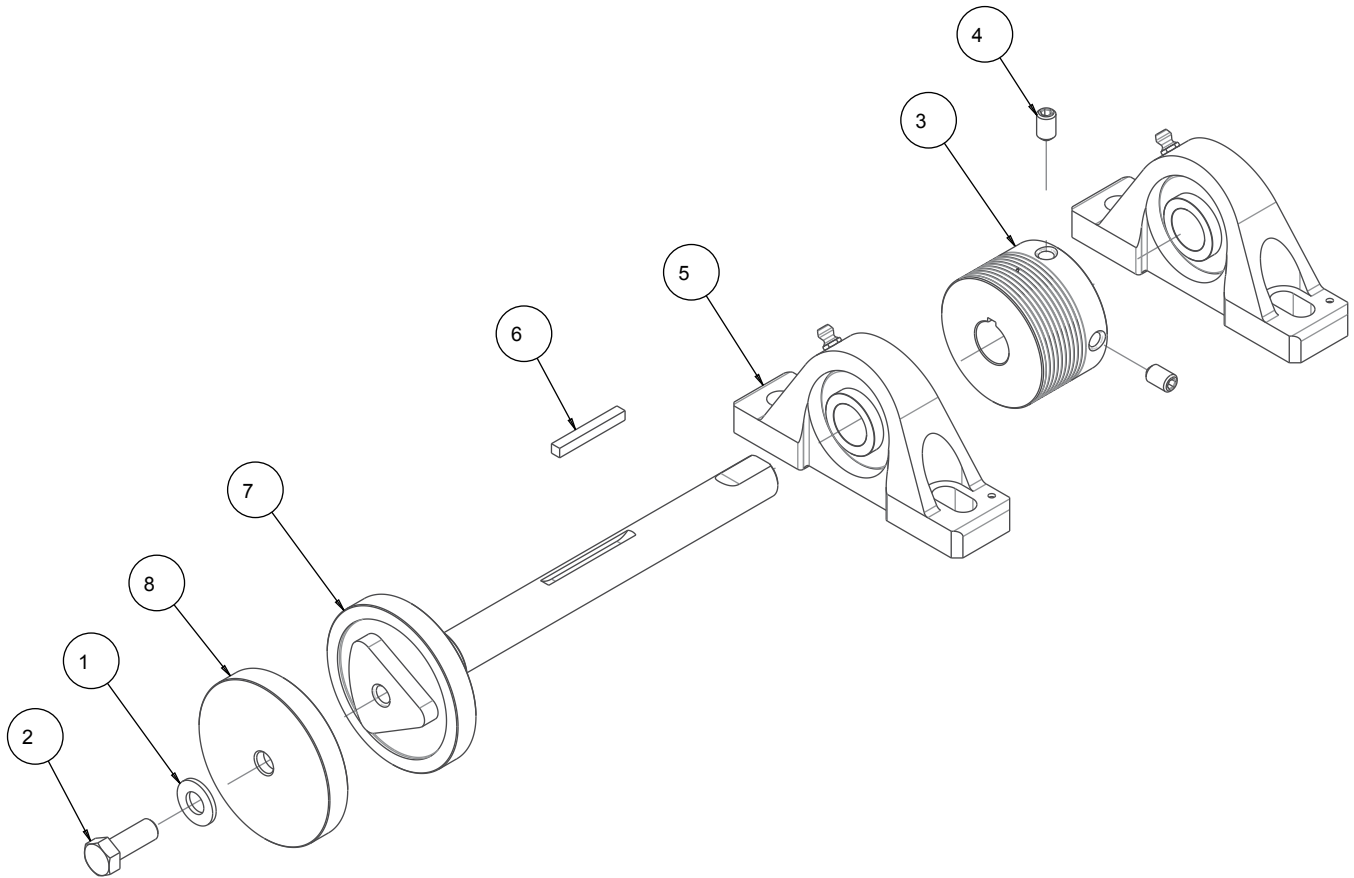
SRX-150, ASSY. HANDLEBAR P/N 172069



SRX-150, ASSY. HANDLEBAR P/N 172069

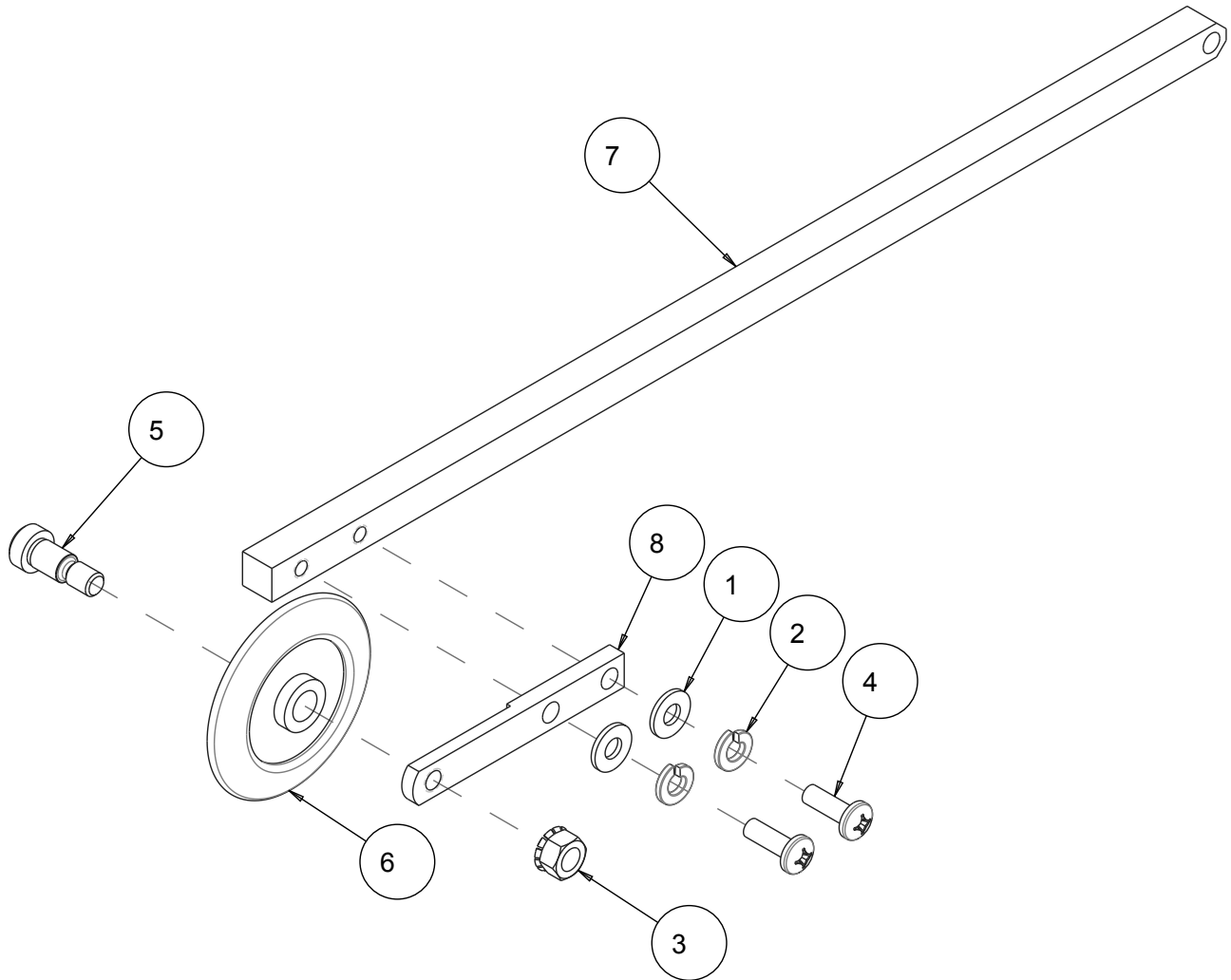
ITEM NO.	DESCRIPTION	PART #	QTY.
1	SCREW, PAN HD, #10 - 24 X 1/2	151744	4
2	SCREW, HEX HEAD, 1/4 - 20 X 1-1/2"	151914	2
3	WASHER, LOCK, SPLIT, 1/4	151915	2
4	CLAMP, CUSHION LOOP 1/2	152471	4
5	WASHER, LOCK, SPLIT, 1/4	152591	2
6	WASHER, #10 SPLIT LOCK	153684	4
7	WASHER, FLAT, SAE, #10	154369	4
8	SCREW, PAN HD SELF TAP 8-32 X 1/2	156632	1
9	SWITCH, ENGINE ON/OFF, HONDA	157851	1
10	PIN, DETENT, W/RING PULL	157933	1
11	LANYARD, 3/64 X 8" GALVNZD STEEL	158072	1
12	WASHER, LOCK, IT,#10	158336	2
13	GRIP, HANDLE 7/8 ID	158608	2
14	SCREW, PAN, PHIL, 10-24 X 1-3/4	167274	1
15	WIRE HARNESS, CX3, SUBARU	170555	1
16	HANDLEBAR, SECTION, LOWER	172071	1
17	HANDLEBAR, CROSSMEMBER	172072	1
18	LEVER, LOCK RELEASE	172073	1
19	PIN, SPRING, 5/16 X 2	172137	1
20	THROTTLE, POS-ACTION, 12-1344	172221	1
21	HANDLEBAR, SECTION, UPPER	172222	1
22	PIN, 1/8 X 11/16 SPRING	172782	1

SRX-150, ASSY. BLADE SHAFT P/N 172066










ITEM NO.	DESCRIPTION	PART #	QTY.
1	WASHER, FLAT, SAE, 3/8	150923	1
2	SCREW, HEX HD CAP, 3/8-16 X 1	152507	1
3	PULLEY, 10J23 X 3/4 BORE	156292	1
4	SCREW, 5/16 -18 X 3/8 SOCKET HEAD SET	157084	2
5	BEARING, PILLOW BLK 3/4"	161378	2
6	KEY, 3/16 SQR X 1-1/2	165347	1
7	SHAFT, BLADE, SR-150	172067	1
8	FLANGE, OUTER, 3"	172068	1

SRX-150, ASSY. POINTER BAR P/N 172129



ITEM NO.	DESCRIPTION	PART #	QTY.
1	WASHER, FLAT, SAE, 1/4	151915	2
2	WASHER, LOCK, SPLIT, 1/4	152591	2
3	NUT, HEX, TW, 5/16-18	153942	1
4	SCREW, PAN HD, 1/4-20 X 3/4	157523	2
5	SCREW, SHOULDER 3/8 X 1/2	160078	1
6	WHEEL, POINTER, 2.75 X .5 X .40	165234	1
7	BAR, GUIDE	172130	1
8	POINTER, ADAPTER BAR	172131	1

ITEM NO.	DESCRIPTION		PART #
1	<p align="center">GC-10 <i>Soft Bond</i> Ultra Hard Aggregate</p>		<p align="center">6-3/8" x .100" 171934</p>
2	<p align="center">GC-20 <i>Medium Soft Bond</i> Hard Aggregate</p>		<p align="center">6-3/8" x .100" 171938t</p>
			<p align="center">6-3/8" x .225" 171939</p>
3	<p align="center">GC-30 <i>Medium Bond</i> Medium/Hard Aggregate</p>		<p align="center">6-3/8" x .100" 171282</p>
			<p align="center">6-3/8" x .225" 171950</p>
4	<p align="center">GC-35 <i>Medium Hard Bond</i> Medium Aggregate</p>		<p align="center">6-3/8" x .100" 171959</p>
			<p align="center">6-3/8" x .225" 171960</p>
5	<p align="center">GC-55 <i>Hard Bond</i> Medium/Soft Aggregate</p>		<p align="center">6-3/8" x .100" 171969</p>
6	<p align="center">Steel Skid Plate</p>		<p align="center">171283</p>
7	<p align="center">Stainless Steel Skid Plate</p>		<p align="center">171286</p>

ORDERING INFORMATION

You may order MK Diamond products through your local MK Diamond distributor or, you may order direct from MK Diamond.

When ordering direct from MK Diamond, please have the following information ready before calling:

- The Model Number of the saw
- The Serial Number of the saw
- Where the saw was purchased and when
- The Part Number for the part(s) being ordered
- The Part Description for the part(s) being ordered

NOTE: Standard orders are \$50.00 or more when ordering direct from MK Diamond. A \$6.00 charge will be added to orders having a net billing value under \$50.00. A nominal handling fee of \$5.00 may apply to some orders.

All parts may be ordered by calling toll free to – 800 421-5830 or 310 539-5221 and asking for Customer Service. For technical questions, call – 800 474-5594.

RETURN MATERIALS POLICY

To expedite the service relative to the return of a product purchased through MK Diamond, please observe the following:

NOTE: When returning all items, they must have been purchased within the previous twelve (12) months.

- Have the Model Number of the saw
- Have the Serial Number of the saw
- Have the location of where the saw was purchased
- Have the date when the saw was purchased
- Contact Customer Service for approval to return the item(s)
- Obtain a Returned Goods Number (RGA) authorizing the return
- Follow the packaging instructions in the following section
- Ensure the RGA number is on the outside of the returned package
- Ensure your item(s) are prepaid to the destination

For returned items, call toll free to – 800 421-5830 or 310 539-5221 and ask for Customer Service.

PACKAGING INSTRUCTIONS

- Remove the Cutting Head and Support Angle Assembly
- Dry the saw before shipping
- When packing, include the following: Saw, Diamond Blade, Blade Guard and Support Angle Assembly and Adjustable Cutting Guide (Other Accessories are not required)
- Package the unit in its original container or one of comparable size (do not ship the unit partially exposed)
- Ensure all parts are secured in the packaging to prevent moving

AUTHORIZED SERVICE CENTERS

For quicker repair time, you may contact MK Diamond Customer Service, toll free, at 800 421-5830 or 310 539-5221 for the Authorized Service Center closest to you or visit our web site at www.mkdiamond.com. For technical questions, call – 800 474-5594.

CONTACT

Please contact MK Diamond Products, Inc. Customer Service Department with any questions you might have regarding distributors, parts or service.

Telephone: **(800) 421-5830**

Fax: **(310) 539-5158**

E-mail: **Customer_Service@MKDiamond.com**

Customer Service Hours: **Monday through Friday, 6AM-4PM PST**

MK Diamond Products, Inc.

1315 Storm Parkway

Torrance, CA 90501

MK DIAMOND PRODUCTS, INC. LIMITED WARRANTY

MK DIAMOND PRODUCTS, INC. will guarantee every machine they build, to be free from defects in material and workmanship for (1) one year from date of purchase. The obligation of MK DIAMOND PRODUCTS, INC. under this warranty is limited to the repair or replacement of any parts which, under normal use, prove to be defective in material or workmanship. The parts involved or the unit in question should be returned to MK DIAMOND PRODUCTS, INC. or to a point designated by us, transportation prepaid.

This warranty does not obligate us to bear the cost of labor or transportation charges in connection with replacement or repair of defective parts. Likewise, it shall NOT apply to any unit which has been subjected to misuse, neglect or accident. This warranty does NOT apply to any machine which has been repaired or altered outside our factory.

This warranty does NOT obligate MK DIAMOND PRODUCTS, INC., with respect to items not of our manufacture, such as engines, motors, hydraulics, etc., which are subject to their own guarantees and warranties.

We shall in no event be liable for consequential damages or contingent liabilities arising out of failure of any equipment or parts to operate properly.

WARRANTY: For your (1) one year warranty to be effective, complete the online Product Registration as soon as possible. Visit **www.mkdiamond.com/registration**

© COPYRIGHT 2019, MK DIAMOND PRODUCTS, INC. ALL RIGHTS RESERVED.

The MK Diamond logo is a registered trademark of MK Diamond Products, Inc. and may not be used, reproduced, or altered without written permission. All other trademarks are the property of their respective owners and used with permission.

MK Diamond may have patents, patent applications, trade marks, copyrights of other intellectual property right covering this product in this document.

This manual **MUST** accompany the equipment at all times. This manual is considered a permanent part of the equipment and should remain with the unit if resold.

The information and specifications included in this publication were in effect at the time of approval for printing.

SRX-150 Early Entry Concrete Saw
OWNER'S MANUAL, OPERATING INSTRUCTIONS &
PART LISTS



MK Diamond Products, Inc.

MK Diamond Products, Inc.
1315 Storm Parkway
Torrance, CA 90501

Toll-Free: (800) 421-5830
Phone: (310) 539-5221
Fax: (310) 539-5158
www.mkdiamond.com