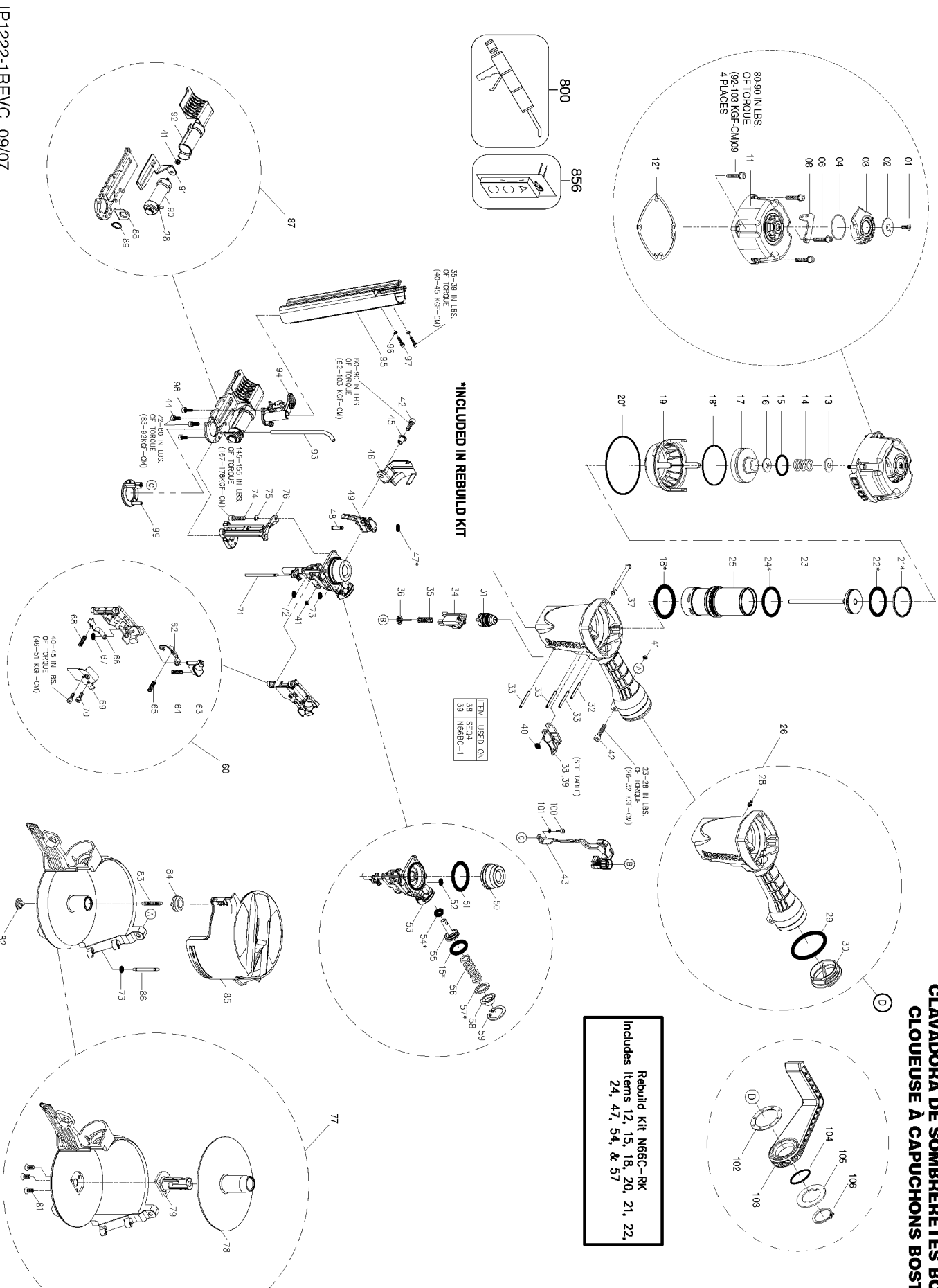


# N66BC

**BOSTITCH CAP NAILER  
CLAVADORA DE SOMBRERETES BOSTITCH  
CLOUSEUSE A CAPUCHONS BOSTITCH**

**Rebuild Kit N66C-RK**  
Includes Items 12, 15, 18, 20, 21, 22,  
24, 47, 54, & 57



## Parts List for N66BC-1 Type 0

Item Number	Part Number	Description	Qty Required
1	174041	SCREW-SFHCS-M4X0.7X1	1
2	174042	SPACER-EXHAUST COVER	1
3	174043	COVER-EXHAUST	1
4	174044	O-RING-41.0MMX1.78MM	1
6	175554	SCREW-SHCS-M5X0.80X3	1
8	P3186300565	MAGAZINE HANGER	1
9	175554	SCREW-SHCS-M5X0.80X3	4
11	G5400700	DEFLECTOR UNIT	1
12	174050	GASKET-FRAME/DEFLECT	1
13	174049	SEAL-DEFLECTOR	1
14	174051	SPRING-COMPRESSION	1
15	174053	O-RING-20.8MMX2.4MM	1
16	174052	WASHER-SPECIAL	1
17	174054	PISTON-HEAD VALVE	1
18	86460	O-RING	1
19	174057	COLLAR-CYLINDER SLEE	1
20	174056	O-RING-66.5MMX2.0MM	1
21	P2320006600	SEAL RING	1
22	S06S003600	O-RING	1
23	G0315900	DRIVER ASSEMBLY	1
24	174058	O-RING-45.5MMX2.0MM	1
25	P2322001100	CYLINDER	1
26	G7001300	FRAME UNIT	1
28	188636	FITTING	1
29	174067	O-RING-45.7MMX2.62MM	1
30	9R209578	END CAP	1
31	TVA6	KIT-TRIGGER VALVE	1

COPYRIGHT© 2005. All Rights Reserved.

Parts list, pricing, and availability subject to change. Please visit [www.dewaltservicenet.com](http://www.dewaltservicenet.com) for current parts information.

## Parts List for N66BC-1 Type 0

Item Number	Part Number	Description	Qty Required
32	174070	PIN-SPRING-M3X22MM	1
33	174071	PIN-SPRING-M3X30MM	1
34	9R199740	SAFETY GUIDE	1
35	P2325202662	SPRING	1
36	P2845203062	SPRING HOLDER	1
37	174062	STEPPED PIN	1
38	SEQ4	KIT	1
39	CNTK1	KIT-CONTACT TRIP CON	1
40	174073	O-RING	1
41	174065	NUT-NYLON LOCK-M5X0.	1
42	1A105201	HEX SOC.HD.BOLT	1
43	G4007500	ASSEMBLY-CONTACT ARM	1
44	S0110510101	HEX.SOC.HD.BOLT	2
45	P2325205662	MAGAZINE SPACER	1
46	P3130000566	GUARD	1
47	S06A000500	O-RING	1
48	P2325207562	SPRING PIN	1
49	G7600200	ASSEMBLY-FEED JAW/CO	1
50	174075	BUMPER-PISTON STOP	1
51	851483-S	O-RING	1
52	S06P000400	O-RING	1
53	P2840001065	NOSE	1
54	S06P000900	O-RING	1
55	P2325504962	FEED PISTON	1
56	P2325205062	SPRING	1
57	P2322005100	FEED PISTON BUMPER	1
58	P2325205262	FEED PISTON COVER	1

COPYRIGHT© 2005. All Rights Reserved.

Parts list, pricing, and availability subject to change. Please visit [www.dewaltservicenet.com](http://www.dewaltservicenet.com) for current parts information.

## Parts List for N66BC-1 Type 0

Item Number	Part Number	Description	Qty Required
59	S15202800	C-RING	1
60	188721	ASSEMBLY-DOOR	1
62	P2325204262	UPPER NAIL STOPPER	1
63	P2320010000	DOOR LATCH	1
64	P2820004162	SPRING	1
65	P2320004100	SPRING	1
66	P2325204062	SECOND NAIL STOPPER	1
67	P2840004100	GROMMET	1
68	9R188713	SPRING	1
69	P2325203862	DOOR COVER	1
70	S0110412101	HEX.SOC.HD.BOLT	2
71	P2325203662	DOOR PIVOT PIN	1
72	S06S000401	O-RING	1
73	S06P000300	O-RING	1
74	S0110625101	HEX.SOC.HD.BOLT	2
75	9R195545	SOCKET HEAD CAP SCRE	1
76	P3180000265	FIXED SUPPORT	1
77	P2840003200	ASSEMBLY-MAGAZINE	1
78	P2840002366	NAIL HOLDER	1
79	P2840002466	ADJUSTING POST	1
81	S1410408400	SELF TAPPING SCREW	3
82	P1960004066	CAP	1
83	191794	SPRING	1
84	P1960004866	CAP	1
85	P2840002566	MAGAZINE COVER	1
86	P2845202662	PIN	1
87	G7800300	MAGAZINE CYLINDER UN	1

COPYRIGHT© 2005. All Rights Reserved.

Parts list, pricing, and availability subject to change. Please visit [www.dewaltservicenet.com](http://www.dewaltservicenet.com) for current parts information.

## Parts List for N66BC-1 Type 0

Item Number	Part Number	Description	Qty Required
88	P3136302265	MAGAZINE C UNIT	1
89	S15101400	C-RING	1
90	G6300100	CYLINDER B UNIT	1
91	P1776301465	PUSHER C	1
92	P1710003066	CYLINDER COVER	1
93	P3180001100	PIPE	1
94	G3101700	SLIDING SEAT UNIT	1
95	P3180001000	MAGAZINE B UNIT	1
96	S31104075	SAFE WASHER	2
97	S0110408100	HEX.SOC.HD.BOLT	2
98	S0110514101	HEX.SOC.HD.BOLT	1
99	G3801865	SAFETY B UNIT	1
100	S0110410101	HEX.SOC.HD.BOLT	1
101	P3185201362	BUSHING	1
102	175582	SEAT PLATE-HOOK	1
103	175583	HOOK	1
104	175557	O-RING-21.9MMX2.62MM	1
105	175585	CAP-HOOK	1
106	175586	RING-RETAINING	1
800	100679	LUBE (1LB.CAN)	1
800	100653	LUBE (2CC)	1

COPYRIGHT© 2005. All Rights Reserved.

Parts list, pricing, and availability subject to change. Please visit [www.dewaltservicenet.com](http://www.dewaltservicenet.com) for current parts information.