



Parts Schedule



EVPC120H Vibratory Paver Compactor

The ESI Team at your service

Roger Euliss – rogere@theESIchoice.com

TF: 866-648-7101 x 101; Cell: 310-433-2355

Garry Haferbier – garryh@theESIchoice.com

TF: 866-648-7101 x 104; Cell: 609-233-9671

Poonam Kapila – poonamk@theESIchoice.com

TF: 866-648-7101 x 102; Cell: 310-502-7721

Sales Information – Sales@theESIchoice.com

TF: 866-648-7101 x 103

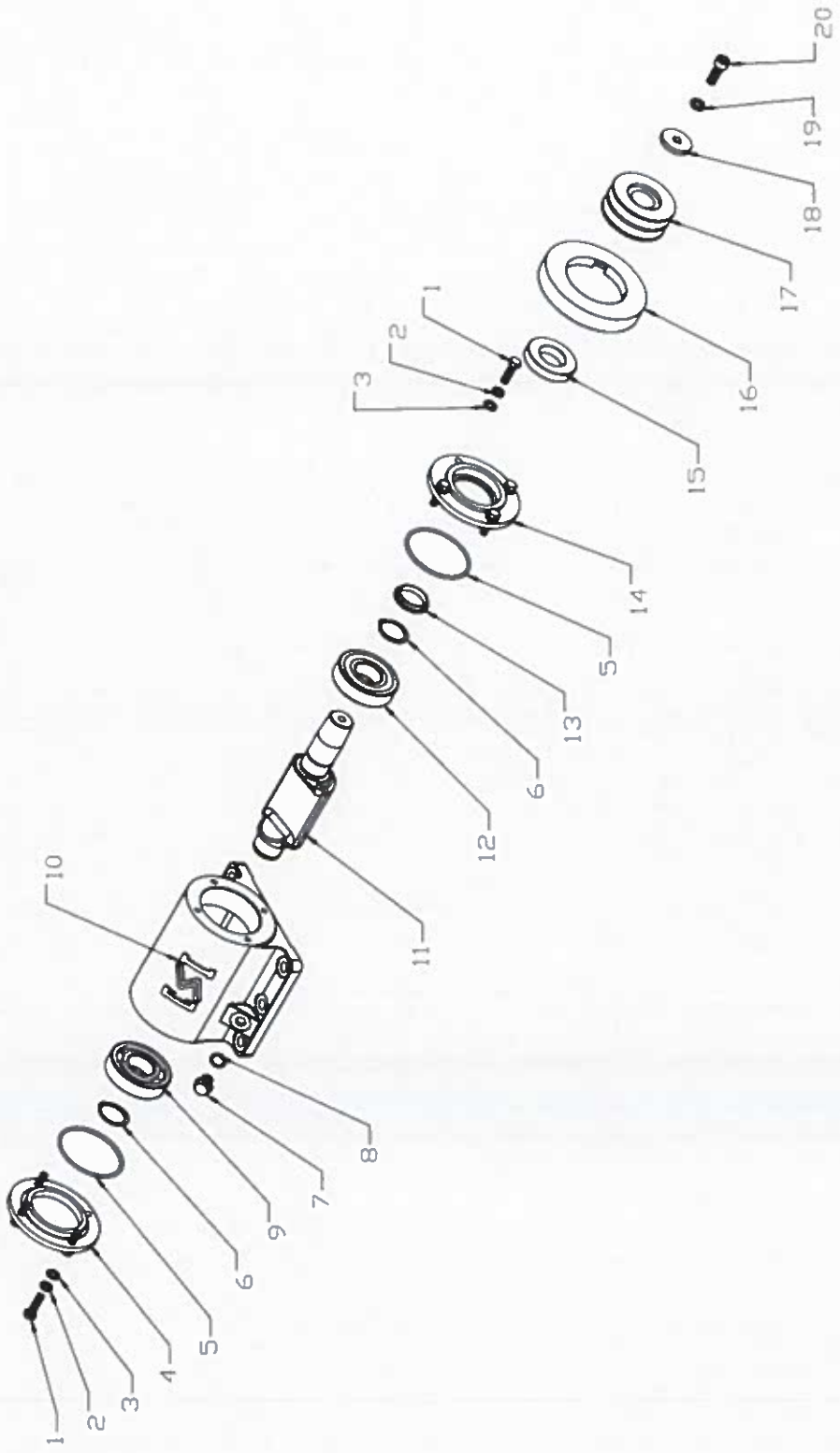
Orders – Orders@theESIchoice.com

TF: 866-648-7101 x 103

Equipment Synergy International, LLC

819 South Fifth Street (PO Box 1405) ▣ Paragould, Arkansas 72450 (72451)

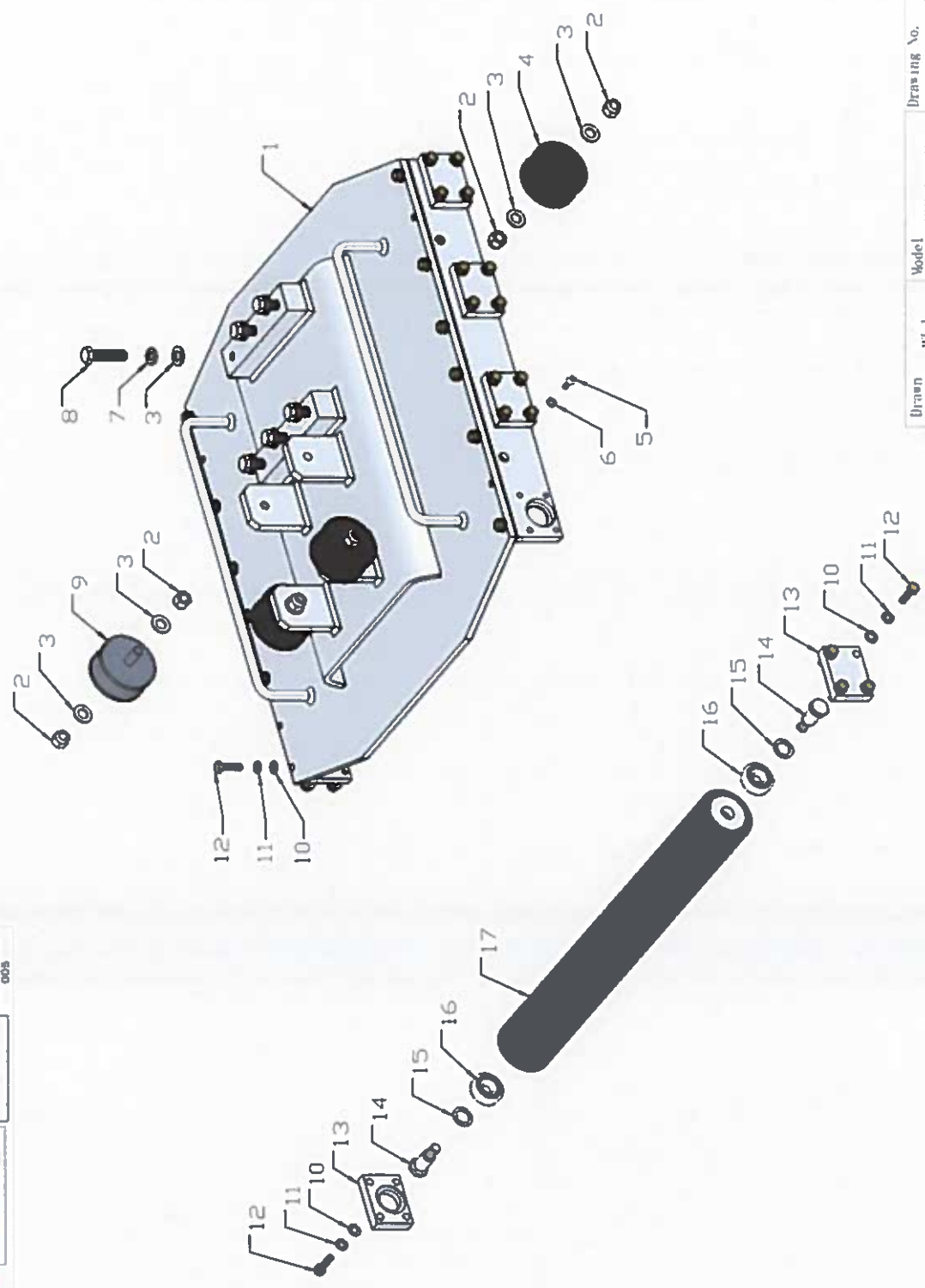
Telephone: 336.454.2665 ▣ Toll Free: 866.648.7101 ▣ Fax: 336.310.1177 ▣ web: www.theESIchoice.com



Drawn	WLJ	Model	EYPC120H	Drawing No.	EYPC120H-01
Checked		Description	EXCITER HOUSING ASSY		
Approved		Date			2014.04.10

EVPC120H-01 EXCITER HOUSING ASSY

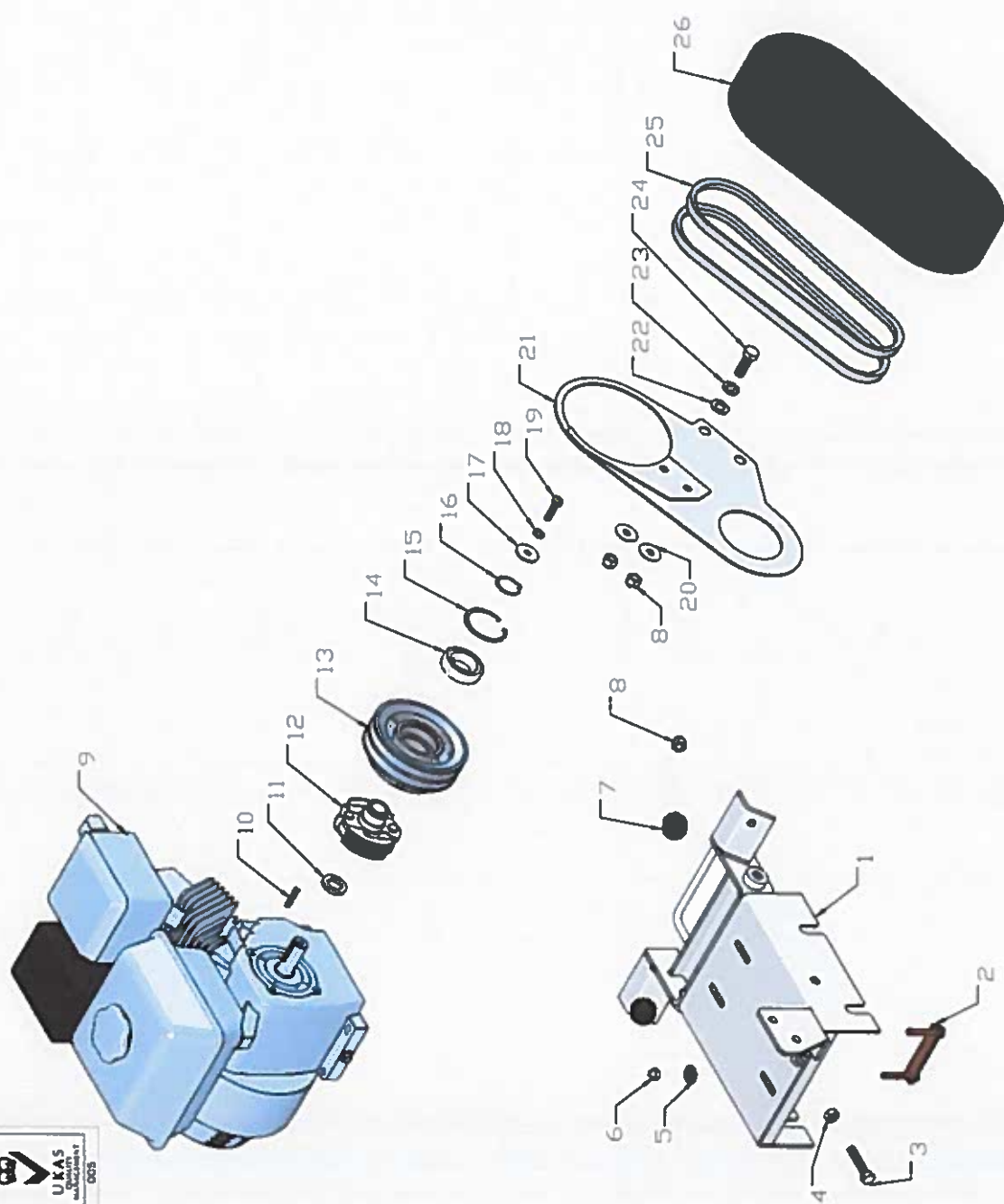
NO.	PART NO.	PART DESCRIPTION	QTY.
01-1	EVPC120H-FN.B-M8x30-8.8-DIN-1	BOLT	8
01-2	EVPC120H-HSPG.W8-DIN-1	SPRING WASHER,TANG ENDS	8
01-3	EVPC120H-FN.W8-DIN-1	WASHER	8
01-4	EVPC120H-60-010400	CLOSE COVER	1
01-5	EVPC120H-W04-80x3.5	O RING	2
01-6	EVPC120H-CS.RG35	EXTERNAL CIRCLIP	2
01-7	EVPC120H-HHOS.B-M14x1.5	HEXAGON HEAD PLUG	1
01-8	EVPC120H-GB97.1-M14	CUPRUM WASHER	1
01-9	EVPC120H-W01-6307-J	BEARING	1
01-10	EVPC120H-60-010200E	EXCITER HOUSING	1
01-11	EVPC120H-60-010100	EXCITER SHAFT	1
01-12	EVPC120H-W01-6307Z-J	BEARING	1
01-13	EVPC120H-60-010700	BUSH	1
01-14	EVPC120H-60-010300	COVER	1
01-15	EVPC120H-W03-65x35x12	OIL SEAL	1
01-16	EVPC120H-60III-010500	COVER GUARD	1
01-17	EVPC120H-60-060300	PULLEY	1
01-18	EVPC120H-60-060301	WASHER	1
01-19	EVPC120H-HSPG.W10-DIN-1	SPRING WASHER,TANG ENDS	1
01-20	EVPC120H-90B-010800	VENT SCREW	1



Drawn	WLJ	Model	EVPC120H	Drawing No.	EVPC120H-02
Checked		Description	MAIN FRAME ASSY		
Approved		Date	2014.01.10		

EVPC120H-02 MAIN FRAME ASSY

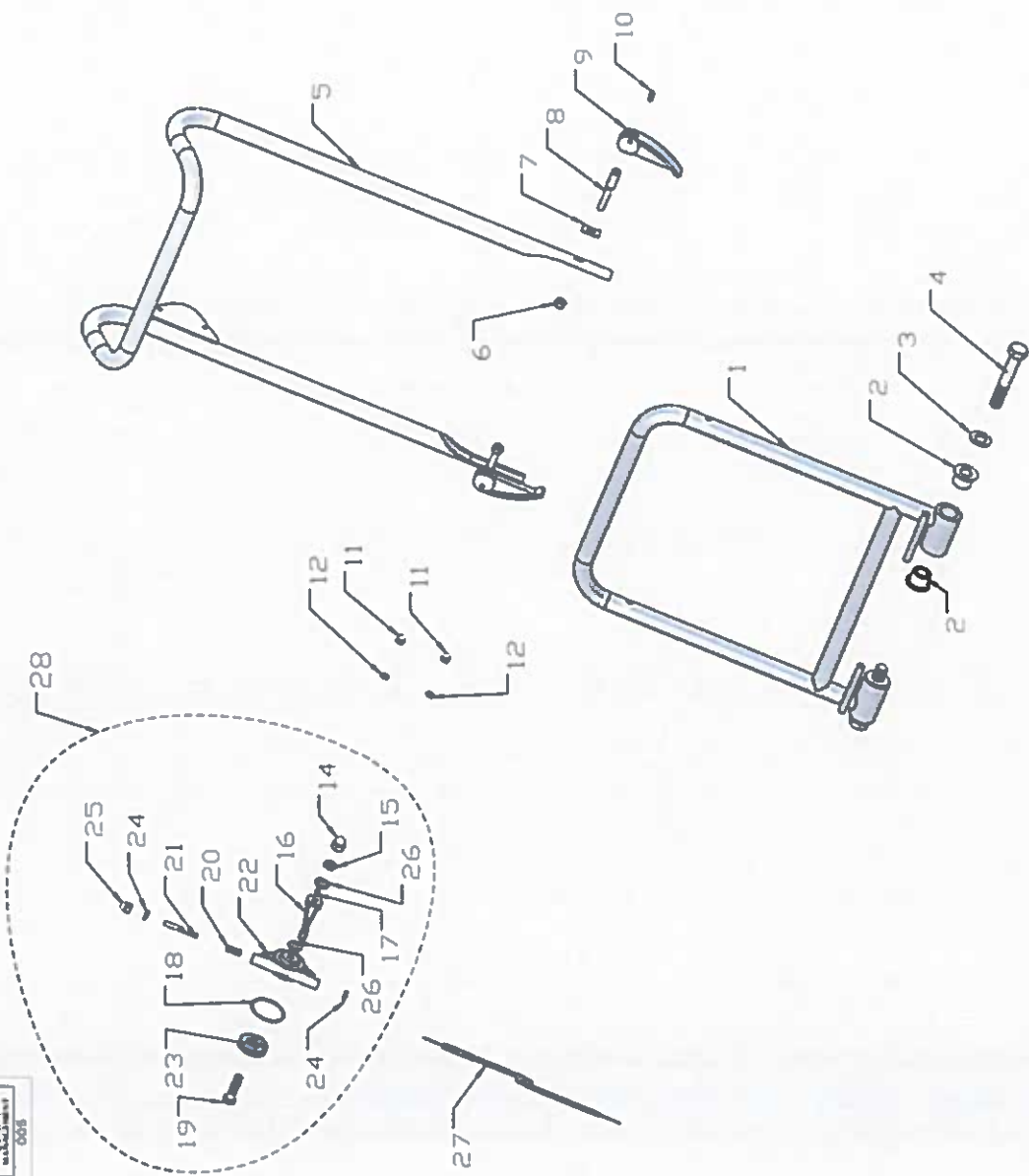
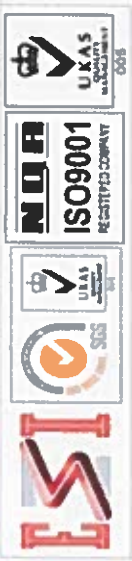
NO.	PART NO.	PART DESCRIPTION	QTY.
02-1	EVPC120H-PCPT90P-010000	STEEL PLATE	1
02-2	EVPC120H-IN.N-M12-DIN-1	LOCK NUT	8
02-3	EVPC120H-FN.W12-DIN-1	WASHER	14
02-4	EVPC120H-60III-060100	CUSHION	3
02-5	EVPC120H-HS.B-M6x16-8.8-GB-1	SCREW	4
02-6	EVPC120H-HSPG.W6-DIN-1	SPRING WASHER,TANG ENDS	4
02-7	EVPC120H-HSPG.W12-DIN-1	SPRING WASHER,TANG ENDS	6
02-8	EVPC120H-HS.B-M12x45-12.9-DIN-3	SCREW	6
02-9	EVPC120H-60-060100	CUSHION	1
02-10	EVPC120H-FN.W8-DIN-1	WASHER	44
02-11	EVPC120H-HSPG.W8-DIN-1	SPRING WASHER,TANG ENDS	44
02-12	EVPC120H-FN.B-M8x30-8.8-DIN-1	BOLT	44
02-13	EVPC120H-PCPT90P-010100	BEARING COVER	8
02-14	EVPC120H-PCPT90P-010200	BOLT	8
02-15	EVPC120H-PCPT90P-010400	WASHER	8
02-16	EVPC120H-W01-6203ZZ-J	BEARING	8
02-17	EVPC120H-PCPT90P-010300	ROLLER	4



Drawn	WLJ	Model	EVPC120H	Drawing No.	EVPC120H-03
Checked		Description	ENGINE AND CLUTCH ASSY		
Approved		Date	2011.04.10		

EVPC120H-03 ENGINE AND CLUTCH ASSY

NO.	PART NO.	PART DESCRIPTION	QTY.
03-1	EVPC120H-PCPT90P-020000	ENGINE BASE	1
03-2	EVPC120H-60-060200	BOLT	2
03-3	EVPC120H-FN.B-M10x45-8.8-DIN-1	BOLT	1
03-4	EVPC120H-FN.N-M10-DIN-1	NUT	1
03-5	EVPC120H-WOD.W8-GB-1	WASHER	4
03-6	EVPC120H-IN.N-M8-DIN-1	LOCK NUT	4
03-7	EVPC120H-80-0408	CUSHION	2
03-8	EVPC120H-IN.N-M10-DIN-1	LOCK NUT	4
03-9	EVPC120H-W05-GX160	ENGINE	1
03-10	EVPC120H-Key.B-5x5x32	KEY	1
03-11	EVPC120H-80-0317	WASHER	1
03-12	EVPC120H-80-0500A	CENTRIFUGAL CLUTCH	1
03-13	EVPC120H-60IIIA-060500	CLUTCH PULLEY	1
03-14	EVPC120H-W01-6006ZZ-J	BEARING	1
03-15	EVPC120H-CH.RG55	INTERNAL CIRCLIP	1
03-16	EVPC120H-CS.RG30	EXTERNAL CIRCLIP	1
03-17	EVPC120H-60-060501	WASHER	1
03-18	EVPC120H-HSPG.W8-DIN-1	SPRING WASHER,TANG ENDS	1
03-19	EVPC120H-FN.B-M8x30-8.8-DIN-1	BOLT	1
03-20	EVPC120H-WOD.W10-GB-1	WASHER	2
03-21	EVPC120H-60III-040200	INNER BELT GUARD	1
03-22	EVPC120H-FN.W12-DIN-1	WASHER	1
03-23	EVPC120H-HSPG.W12-DIN-1	SPRING WASHER,TANG ENDS	1
03-24	EVPC120H-FN.B-M12x35-8.8-DIN-1	BOLT	1
03-25	EVPC120H-W02-A31	V-BELT	2
03-26	EVPC120H-60III-040100	OUTTER BELT GUARD	1



Drawn	WJ	Model	EVPC120H	Drawing No.	EVPC120H-04
Checked		Description	OPERATION HANDLE ASSY		
Approved		Date	2014.04.10		

EVPC120H-04 OPERATION HANDLE ASSY

NO.	PART NO.	PART DESCRIPTION	QTY.
04-1	EVPC120H-60IIIA-050200	HANDLE BOTTOM	1
04-2	EVPC120H-60-050400	NYLON BUSH	4
04-3	EVPC120H-FN.W16-DIN-1	WASHER	2
04-4	EVPC120H-FN.B-M16x95-8.8HALF	BOLT	2
04-5	EVPC120H-60IIIA-050100	HANDLE TOP	1
04-6	EVPC120H-IN.N-M8-DIN-1	LOCK NUT	2
04-7	EVPC120H-60III-050103	SPANNER SPRING WASHER	2
04-8	EVPC120H-60III-050102	SPANNER SCREW	2
04-9	EVPC120H-60III-050101	ADJUSTING SPANNER	2
04-10	EVPC120H-SC.PIN-6x20	SPRING PIN	2
04-11	EVPC120H-HC.N-M6-DIN-2	CAP NUT	2
04-12	EVPC120H-HSPG.W6-DIN-1	SPRING WASHER,TANG ENDS	2
04-13	EVPC120H-FN.B-M6x20-8.8-DIN-1	BOLT	2
04-14	EVPC120H-HC.N-M10-DIN-2	CAP NUT	1
04-15	EVPC120H-FNL.N-M10-DIN-2	HEXAGON THIN NUT	1
04-16	EVPC120H-70ND-060000	THROTTLE LEVER	1
04-17	EVPC120H-FHSS.S-M6x8-GB-3	SOCKET SCREW WITH FLAT HEAD	1
04-18	EVPC120H-W04-45x3	O-RING	1
04-19	EVPC120H-70ND-060003	BOLT	1
04-20	EVPC120H-FHSS.S-M8x20-GB-3	SOCKET SCREW WITH FLAT HEAD	1
04-21	EVPC120H-70ND-060004	SLIDER	1
04-22	EVPC120H-70ND-060001	THROTTLE BODY	1
04-23	EVPC120H-70ND-060002	THROTTLE GEAR	1
04-24	EVPC120H-FNL.N-M8-DIN-2	HEXAGON THIN NUT	2
04-25	EVPC120H-HC.N-M8-DIN-2	CAP NUT	1
04-26	EVPC120H-FN.W10-DIN-2	WASHER	2
04-27	EVPC120H-W06-S04-L800x1000	THROTTLE CABLE	1
04-28	EVPC120H-70ND-010018	THROTTLE LEVER ASSY	1

Equipment Synergy International (ESI) Limited Warranty



This equipment is warranted to be free from defects in both materials and workmanship. Should any part of this equipment be defective, it will be repaired or replaced, at option, free of charge (except incoming shipping charges) for a period of one (1) year from the date of original purchase. No charge will be made for parts or labor during this period. Proof of purchase (such as a model number, date of purchase, serial number) must be submitted to obtain the benefits of this warranty. Parts subject to warranty must be reported to ESI within 30 days from the date of determination of defect.

Warranty with respect to products, components and accessories not manufactured by ESI is limited to the warranty extended by the manufacturer of those items. Engine manufacturers are responsible for engine warranties.

This warranty is void if:

- (a) the equipment has been damaged by negligence, accident or mishandling, or has not been operated in accordance with the procedures described in the operating instructions; or
- (b) the equipment has been altered or repaired by other than an approved service center, or adaptations or accessories other than have been made or attached to the equipment which, in the determination of shall have affected the performance, safety, or reliability of the equipment.

NO OTHER WARRANTY EXPRESSED OR IMPLIED, INCLUDING MERCHANTABILITY, APPLIES to the equipment, nor is any person or company authorized to assume any other warranty.

ESI does not assume any responsibility for any consequential damages occasioned by the equipment, or inconvenience or interruption in operation.