



[Click Here To View
Item at
www.GapPower.com](http://www.GapPower.com)

*Sales • Rentals
Parts & Service*

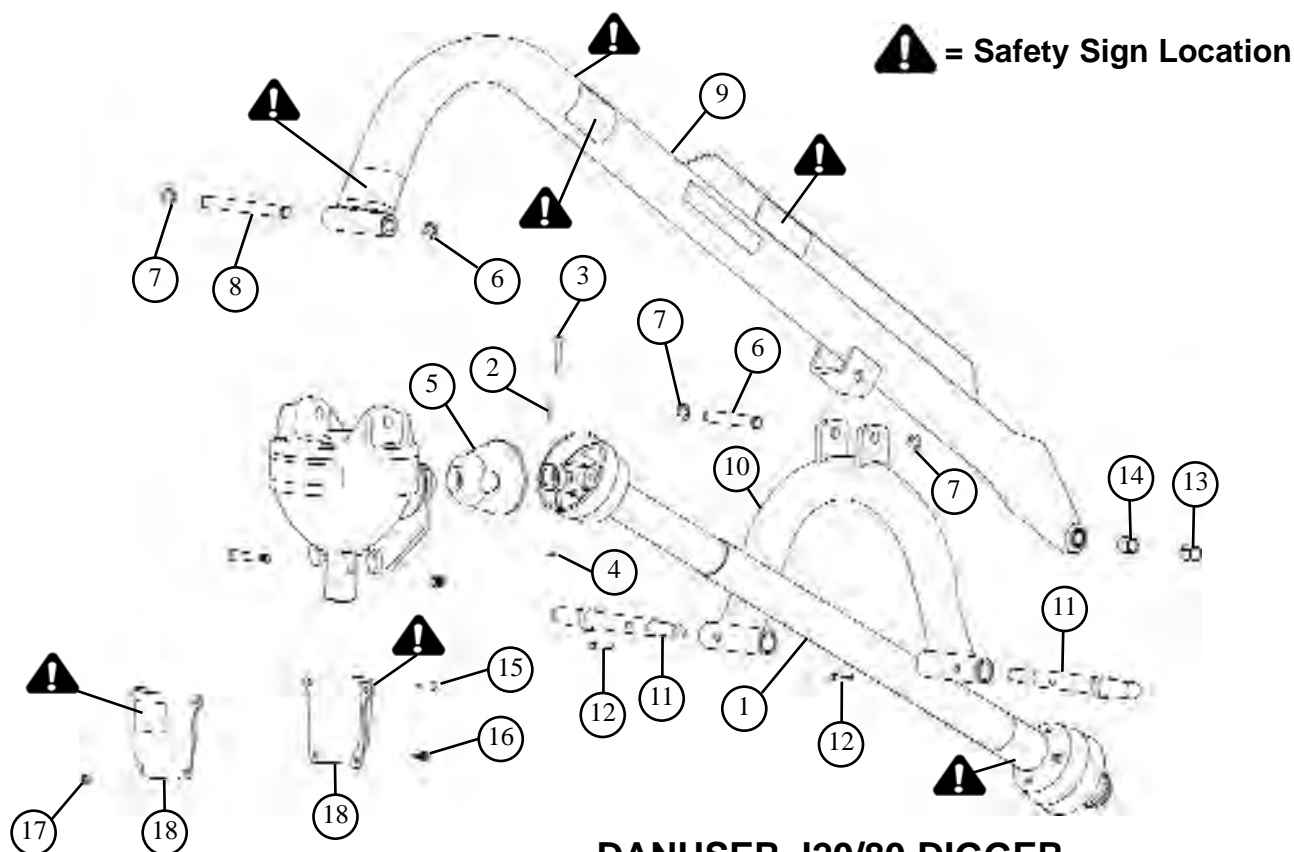
(Parts Pages Follow)

ATTENTION

If you need an Owner's/Operator's Manual and/or safety signs (decals), then please contact Danuser. Provide your Model Number and Serial Number, and we will be happy to mail it to you.

Danuser Machine Company, Inc.
500 E. 3rd St.
P.O. Box 368
Fulton, MO 65251
Tel: (573) 642-2246
Fax: (573) 642-2240
E-mail: sales@danuser.com

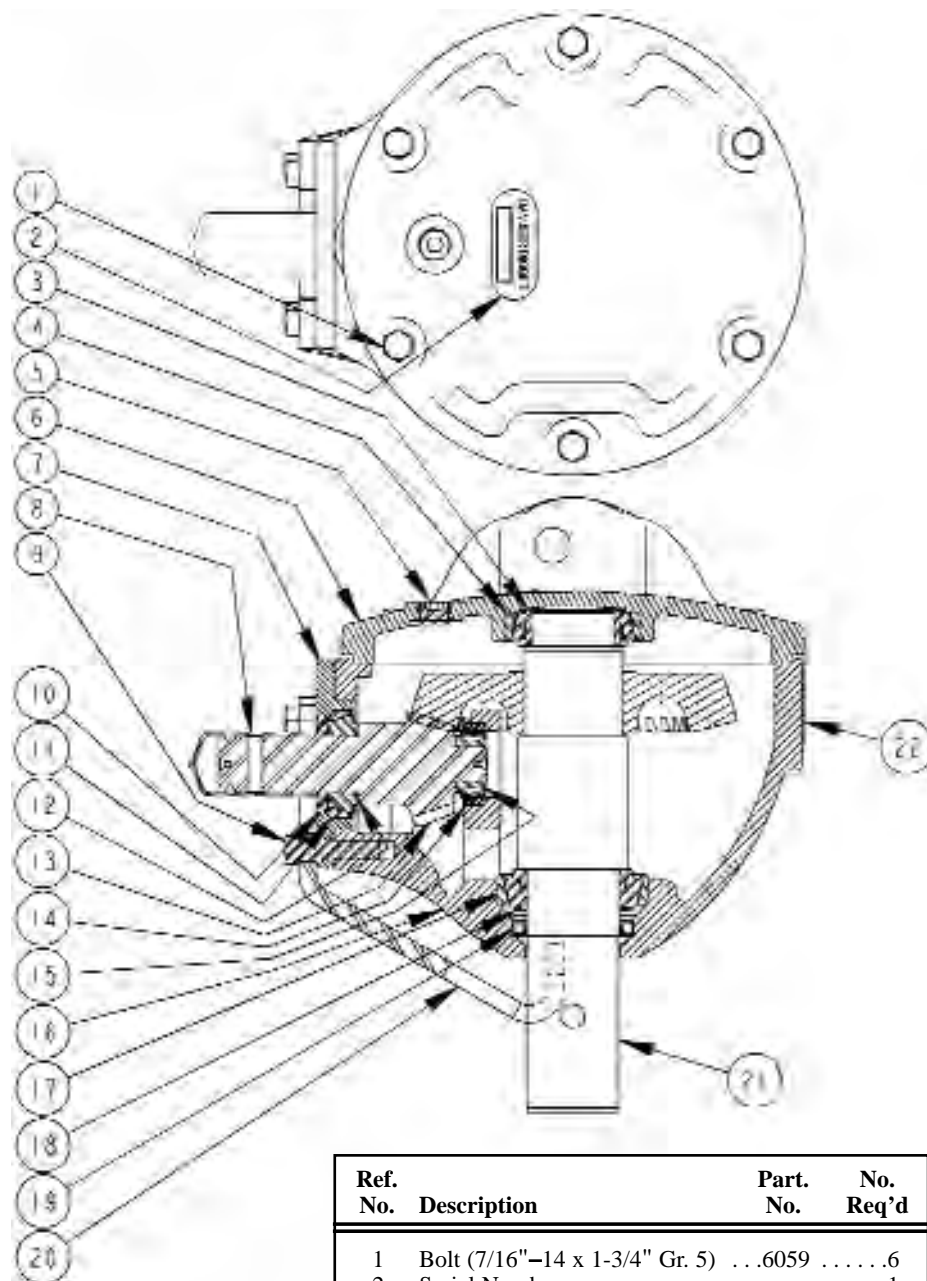
Digger Parts



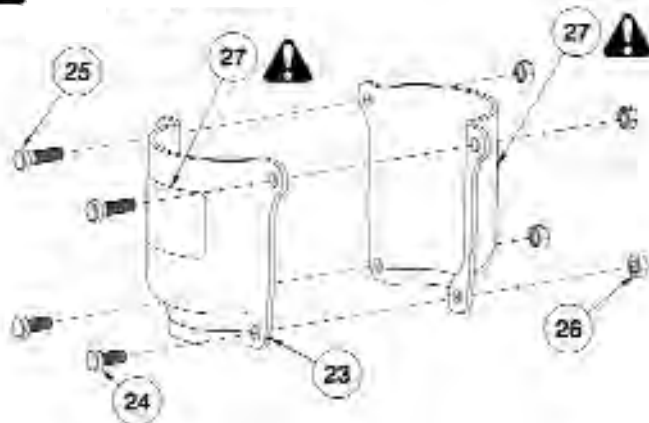
DANUSER J20/80 DIGGER

Ref. No.	Description	Part No.	No Req'd
	Driveline Package68141
	(consists of the following)		
1	Driveline68071
2	Roll Pin (3/16" x 1-1/2")60611
3	Shear Bolt (5/16"-18 x 2-1/4" Gr. 5, 13/32" of thread)6015 *3
	(SPECIAL BOLT: Use Genuine Danuser Replacement Only)		
4	Nut (5/16"-18)573 *3
5	Pinion Guard60571
6	Pin (3/4" x 4-15/16")60551
7	Retaining Ring21724
8	Pin (3/4" x 8")60561
9	Boom68031
10	Yoke68041
11	Link Pin68062
12	Roll Pin74572
13	Bushing85901
14	Bushing74671
	Gearbox Assembly60421
	(consists of the following)		
15	Bolt (3/8"-16 x 1-1/4" Gr. 5)11802
16	Bolt (3/8"-16 x 7/8" Gr. 5)23392
17	Nut (3/8"-16)21684
18	Auger Adapter Shield61372
	Owner's Manual (in digger box)1
* One required in unit. Two extra are included in package for replacement.			

Gearbox Assembly

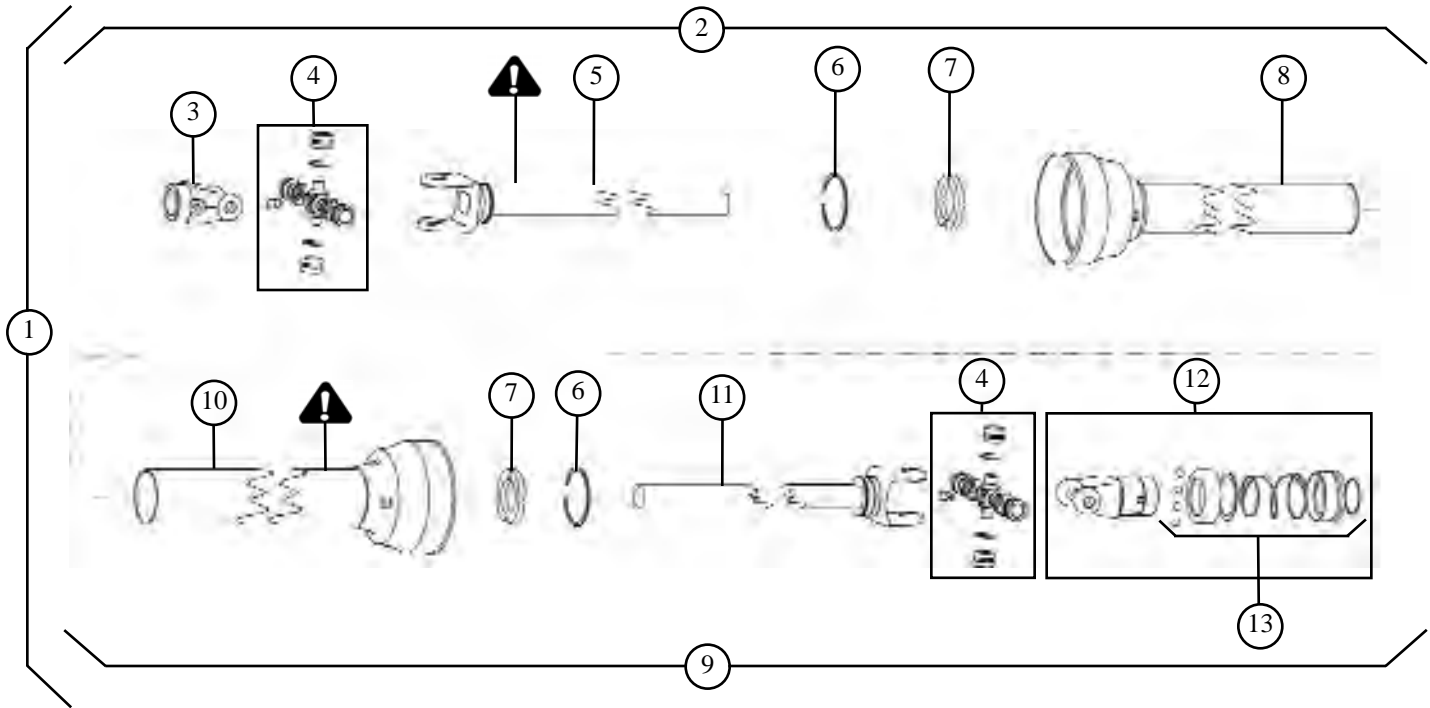


! = Safety Sign Location



Ref. No.	Description	Part. No.	No. Req'd
1	Bolt (7/16"-14 x 1-3/4" Gr. 5) . . .60596	
2	Serial Number1	
3	Cone (Upper Spindle)60091	
4	Cup (Upper Spindle)60081	
5	Housing Cover Plug11131	
6	Gear Housing Cover60041	
7	Cap60051	
8	Cap (Pinion Protection)60161	
9	Bolt (7/16"-14 x 1-3/4" Gr. 5) . . .60593	
10	Oil Seal (Pinion)60171	
11	Cup (Outer Pinion)60121	
12	Cone (Outer Pinion)60131	
13	Pinion63491	
14	Cup (Inner Pinion)60101	
15	Cone (Inner Pinion)60111	
16	Gear Housing60031	
17	Cup (Lower Spindle)60061	
18	Cone (Lower Spindle)60071	
19	Oil Seal (Spindle)60181	
20	Guard Bracket62741	
21	Spindle Assembly63521	
22	Danuser Decal20881	
23	Auger Adapter Shield61372	
24	Bolt (3/8"-16 x 7/8" Gr. 5)23392	
25	Bolt (3/8"-16 x 1-1/4" Gr. 5) . . .11802	
26	Nut (3/8"-16)21684	
27	Safety Sign21692	

Driveline Parts



= Safety Sign Location

J20/80 DRIVELINE PARTS

Ref. No.	Description	Part. No.	No. Req'd
1	Driveline68141	
2	Telescoping Assembly with Guard		
2	Digger Half with Guard68151
3	End Yoke68091
4	Center Cross Repair Kit68172
5	Yoke and Tube68111
6	Bearing Retainer60672
7	Nylon Bearing72582
8	Inner Guard (incl. Centralizer)68101
9	Tractor Half with Guard68161
10	Outer Guard68131
11	Yoke and Shaft68121
12	Spring-Lok Yoke Assembly72691
13	Spring-Lok Repair Kit61311



Part No. 13-10022
Location: Driveline tube, under guard



PART NO. 13-10021
Location: Driveline Guard



End Yokes Properly Aligned

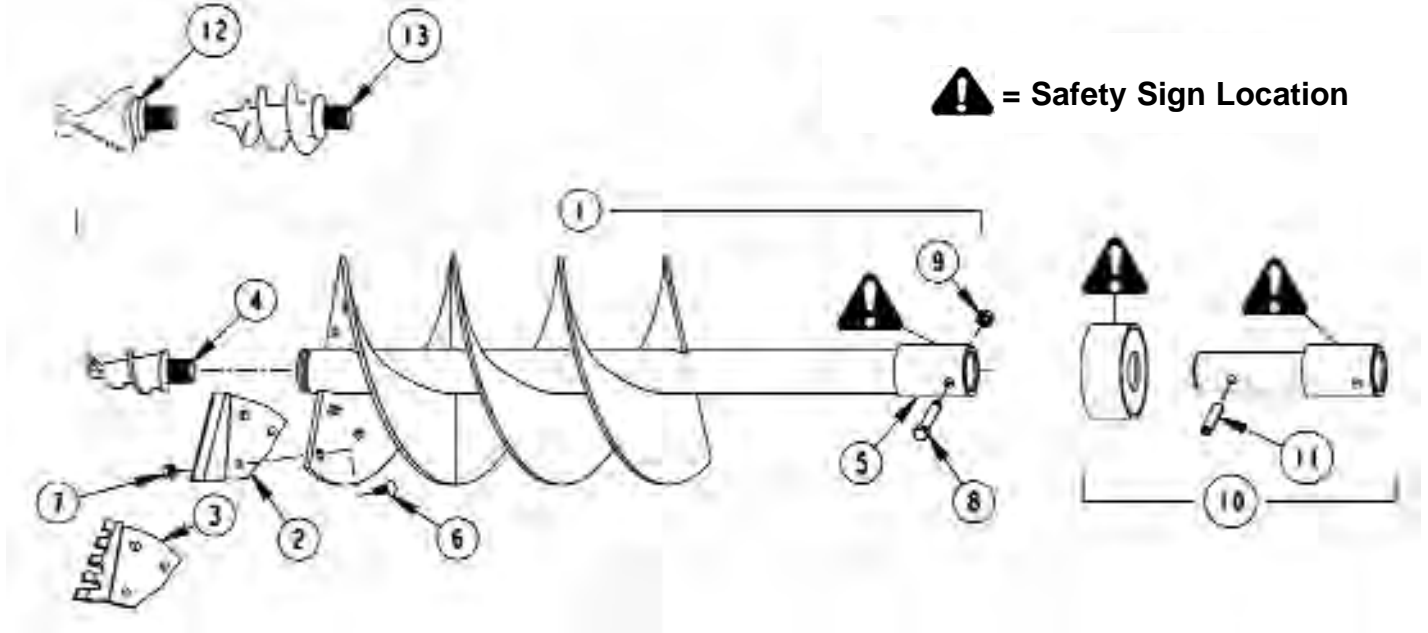
CAUTION

Failure to properly align end yokes may result in excessive vibration. Always be sure guards are in place and rotate freely.

Auger Assemblies



When using an extension, Ref. No. 8 (PN 6014) and Ref. No. 9 (PN 1056) should be relocated from the auger adapter to the extension adapter, and Ref. No. 11 (PN 6239) should be used to attach the auger to the extension to avoid possible entanglement.



NOTE Augers have replaceable points and edges. Serrated cutting edges (Ref. No. 3) and optional points (Ref. No. 12 and Ref. No. 13) are available to aid penetration in tough digging conditions. Flights are replaceable except on 4" and 6" augers, where the flight is a continuous spiral. Cutting edges on 4" and 6" augers are welded on the auger.

AUGER ASSEMBLIES FOR 2" ROUND SPINDLES

Ref. No.	Part Number by Auger Diameter								Description	No. Req'd
	4"	6"	9"	12"	14"	16"	18"	24"		
1	See next page for available augers.								Auger	1
2	7782	7783							Plain Cutting Edges (Weld On)	1 Set
			7784	7790	7792	7794	7796	7798	Plain Cutting Edges (with Bolts & Nuts)	1 Set
3			7785	7791	7793	7795	7797	7799	Serrated Cutting Edges (with Bolts & Nuts)	1 Set
4	899	831	831	831	831	831	831	831	Standard Auger Point	1
5	6019	6019	6019	6019	6019	6019	6019	6019	Auger Adapter Replacement (for Field Welding)	1
6			784	784	784	784	784	784	Cutting Edge Bolt (3/8"-16 x 1" Carriage)	As Req'd
7			785	785	785	785	785	785	Cutting Edge Nut (3/8"-16 Hex)	As Req'd
8	6014	6014	6014	6014	6014	6014	6014	6014	Retaining Bolt (1/2"-13 x 3-1/4" Gr. 8, 1/2" of thread) SPECIAL BOLT: Use Genuine Danuser Replacement Only	1
9	1056	1056	1056	1056	1056	1056	1056	1056	Retaining Nut (1/2"-13 Hex)	1
10	6080G	6080G	6080G	6080G	6080G	6080G	6080G	6080G	Auger Extension with Guard (7")	1
	6204G	6204G	6204G	6204G	6204G	6204G	6204G	6204G	Auger Extension with Guard (14")	1
	6207G	6207G	6207G	6207G	6207G	6207G	6207G	6207G	Auger Extension with Guard (21")	1
11	6239	6239	6239	6239	6239	6239	6239	6239	Coiled Pin (1/2" x 2-3/4") SPECIAL PIN: Use Genuine Danuser Replacement Only	1
12		1937	1937	1937	1937	1937	1937	1937	Special Duty Auger Point	1
13		6210	6210	6210	6210	6210	6210	6210	Aggressive Duty Auger Point	1

2" Round Augers

 = Safety Sign Location

2" ROUND SPINDLE AUGERS

Part Number by Auger Diameter								Description
4"	6"	9"	12"	14"	16"	18"	24"	
6101	6029	6030	6032	6034	6036	6038	6040	40" Long with Plain Edges & Standard Point
		6031	6033	6035	6037	6039	6041	40" Long with Serrated Edges & Standard Point

2" ROUND SPINDLE STEPPED AUGERS

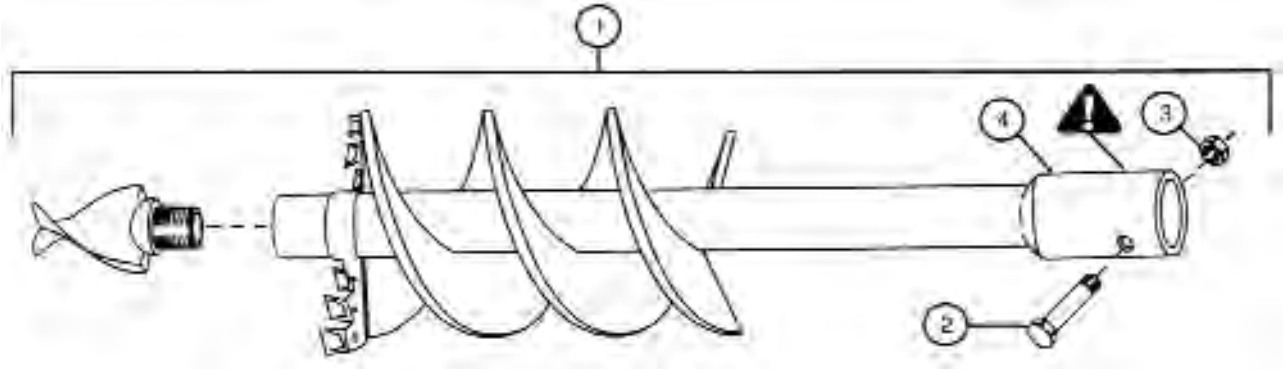
Part Number by Auger Diameter			Description
18" x 10"	24" x 12"	30" x 16"	
6240			33" Long with Plain Edges & Standard Point Auger Uses Both Dimensions of Cutting Edges
6248			33" Long with Serrated Edges & Standard Point Auger Uses Both Dimensions of Cutting Edges
	6241	6242	40" Long with Plain Edges & Standard Point Auger Uses Both Dimensions of Cutting Edges
	6249	6250	40" Long with Serrated Edges & Standard Point Auger Uses Both Dimensions of Cutting Edges

2" ROUND SPINDLE ORCHARD AUGERS

Part Number by Auger Diameter		Description
18"	24"	
6256	6255	29" Long with Serrated Edges & Standard Point

Hole Digger Head Auger Assemblies

 = Safety Sign Location



NOTE

Hole Digger Head Augers have replaceable points and teeth. Flights are replaceable, except on 6".

NOTE

Auger Point PN 9353 is the only auger point that can be used with Hole Digger Heads.

AUGER ASSEMBLIES WITH HOLE DIGGER HEADS FOR 2" ROUND SPINDLES

Ref. No.	Part Number by Auger Diameter					Description	No. Req'd
	6"	9"	12"	14"	16"		
1	6121	6122	6123	6124	6125	40" Hole Depth Auger with Double Flight Construction	1
2	6014	6014	6014	6014	6014	Retaining Bolt (1/2"-13 x 3-1/4" Gr. 8, 1/2" of thread) SPECIAL BOLT: Use Genuine Danuser Replacement Only	1
3	1056	1056	1056	1056	1056	Retaining Nut (1/2"-13)	1
4	6019	6019	6019	6019	6019	Auger Adapter Replacement (for Field Welding)	1

Hole Digger Head Kits can be welded onto standard augers.



HOLE DIGGER HEAD REPLACEMENT PARTS

Ref. No.	Description	Part. No.
1	Hole Digger Head Point	9353
2	Hole Digger Head Tooth	9234
	Hard-Surface Tooth (option)	9964
3	Roll Pin (5/16" x 1-1/4")	7483

HOLE DIGGER HEAD KIT* (Field Weld to Auger)

Auger Diameter	No. Teeth per Head	Part. No.
6"	2	9386
9"	4	9306
12"	4	9308
14"	6	9309
16"	6	9310
* Includes head with teeth and roll pins, point and point adapter with tube, for welding to auger center column.		



Accessories

Standard

Special Duty

Aggressive Duty



①

②

③

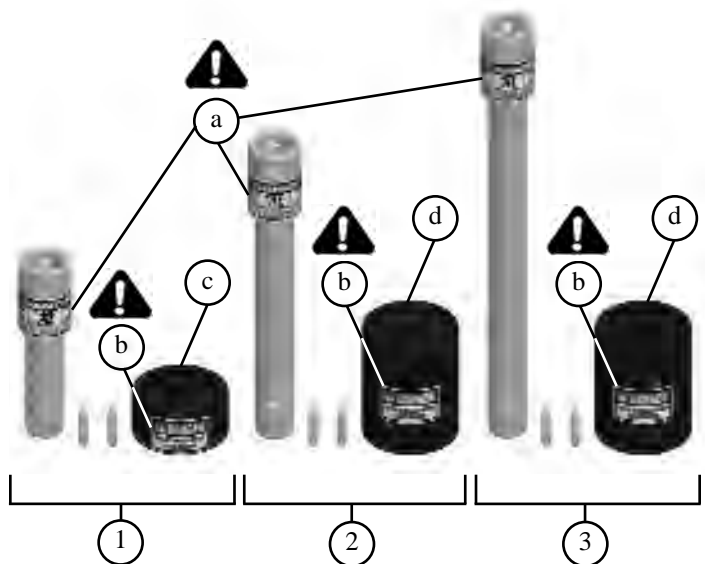
Plain

Serrated



①

②



Auger extensions with Auger Extension Guards are available in lengths of 7, 14, and 21 inches for extra hole depth. Make sure your tractor can accommodate the extra length and still have adequate clearance. Use **only** factory supplied coiled pins to connect the auger to the auger extension. Two coiled pins are shipped with the auger extension, one to install and one spare. When installed, the coiled pin must be flush with the sides of the auger, and the area should be covered by the Auger Extension Guard. The auger retaining bolt should be covered by the Auger Adapter Guard.

AUGER POINTS

Ref. No.	Description	Part No.
1	Standard for augers 6" through 24" diameter831
	only point for 4" augers899
2	Special Duty1937
3	Aggressive Duty6210

See Hole Digger Head Point on separate page.

CUTTING EDGES

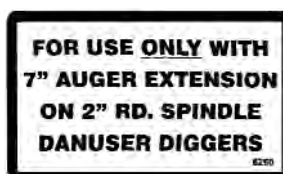
Ref. No.	Description	Part No.
1	Plain	See charts
2	Serrated	See charts

See Hole Digger Head Teeth on separate page.

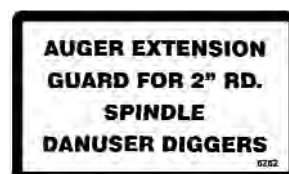
AUGER EXTENSIONS

Ref. No.	Description	Part No.
1	7" Auger Extension with 2 Special Coiled Pins & Auger Extension Guard . .	.6080G
2	14" Auger Extension with 2 Special Coiled Pins & Auger Extension Guard . .	.6204G
3	21" Auger Extension with 2 Special Coiled Pins & Auger Extension Guard . .	.6207G
a	Safety SignPHDC5
b	Safety Sign2169
c	Decal6260
d	Decal6262

 = Safety Sign Location



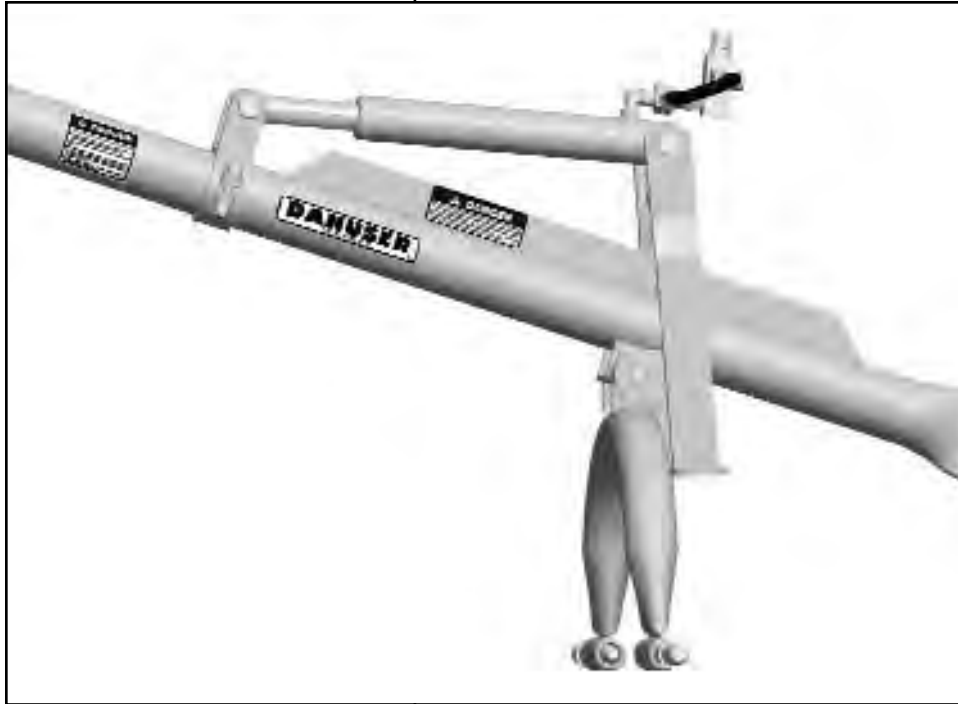
①



②

Accessories

(continued)



DOWN FORCE KIT

A Down Force Kit (PN 6818) is available to make difficult digging easier.

The kit attaches to all J20/80 Diggers without alteration and with the use of ordinary hand tools. It provides approximately 500 pounds of additional force to the auger point for easier penetration of hard or frozen ground.

The kit does not interfere with normal digging operations.

The kit operates from the tractor hydraulic system with normal remote cylinder outlets. Customer provides mating coupler tip to fit his particular tractor as well as sufficient hydraulic hose and fittings to connect the valve to the tractor sump.



J20/80 shown above

The Danuser Auger Cart, U.S. Patent No.: 6,419,245 B1, allows you to quickly and easily attach/detach, transport, and store Danuser 3-pt. Hitch Diggers: F8 (shown), J20/80, G20/40, 8800, and 8900.

The Danuser Auger Cart has four wheels, steering capabilities, and a parking brake. It can be used on any level surface. Maximum auger diameter is 24".

